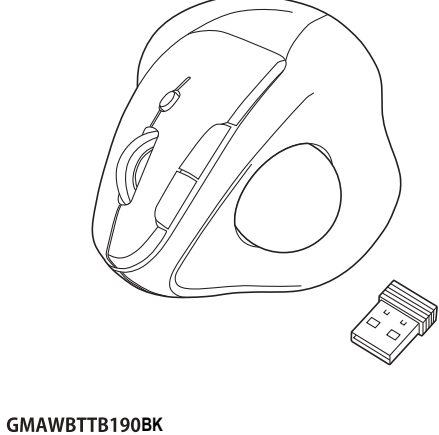




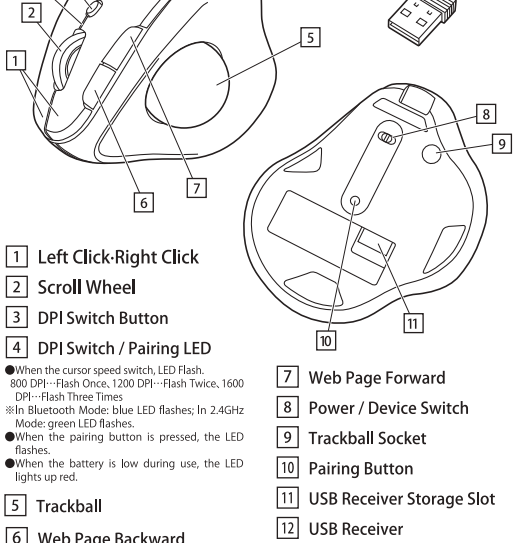
Dual-Mode Ergonomic Silent Click Trackball Mouse User Manual



GMAWBTTB190BK
FCC ID: 2A5MSUGMAWBTTB190BK
DID: D062703
Dongle Model: GMAWBTTB190BK-RC

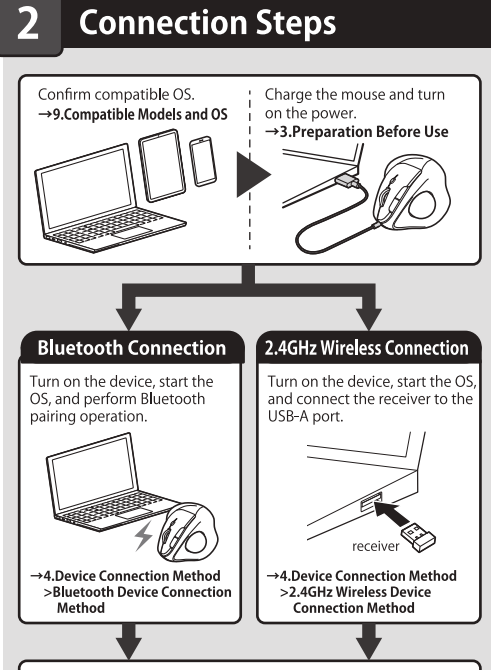
ver.1.0

1.At a Glance

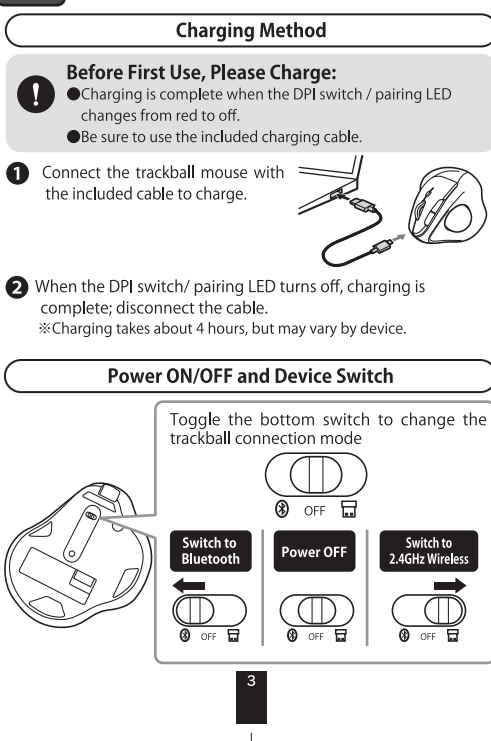


- 1 Left Click-Right Click
- 2 Scroll Wheel
- 3 DPI Switch / Pairing LED
- 4 Web Page Forward
- 5 Trackball
- 6 Web Page Backward
- 7 Web Page Forward
- 8 Power / Device Switch
- 9 Trackball Socket
- 10 Pairing Button
- 11 USB Receiver Storage Slot
- 12 USB Receiver

2 Connection Steps



3 Preparation Before Use



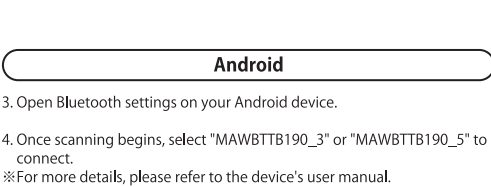
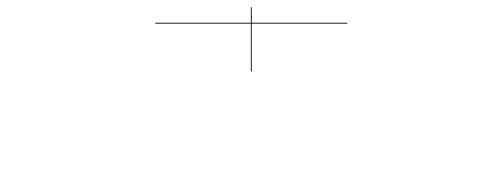
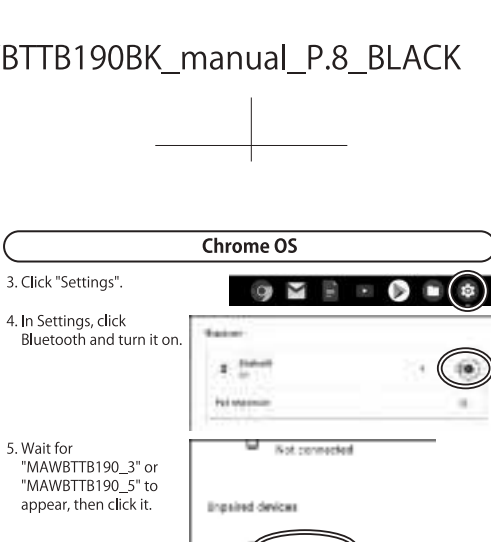
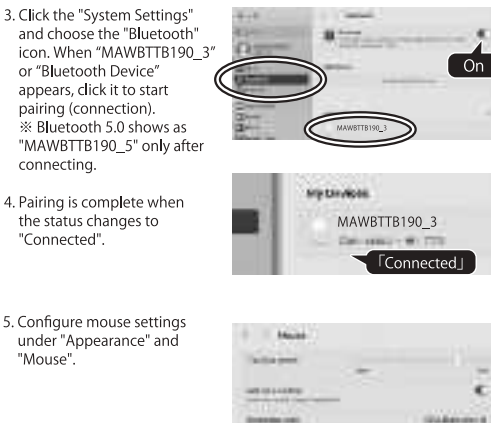
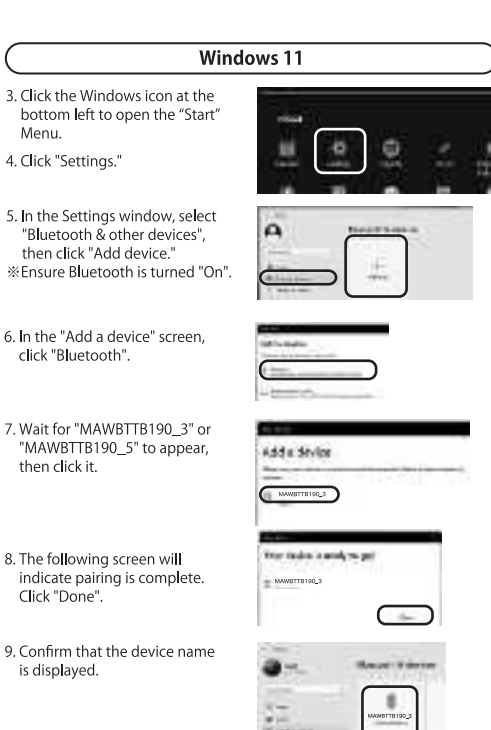
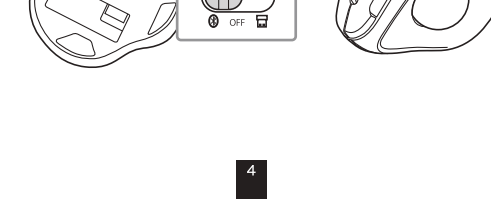
4 Device Connection Method

After pairing is complete, the trackball mouse will automatically connect when powered on. However, if it is the first time or not yet paired, it will not automatically connect when powered on. Please be sure to perform the following pairing operation.

Bluetooth Device Connection Method

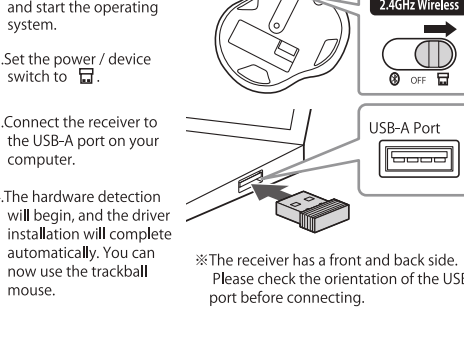
- 1.Set the power / device switch to ⑧.
- 2.Hold the pairing button on the bottom of the trackball mouse until the blue DPI switch / pairing LED flashes, entering pairing mode.
- 3.If using an existing mouse or touch pad to complete pairing (connection).
- 4.The following are examples of pairing methods for different operating systems.

If you are using an external USB Bluetooth adapter, please refer to its user manual.



2.4GHz Wireless Device Connection Method

- For Windows-
It is recommended to close all other applications (such as antivirus software and other background programs) before connecting the receiver.
- For macOS-
Only standard applications with installed scroll wheel drivers, such as Safari, Mail, TextEdit, and Finder, can use the scroll wheel function, but it cannot be used as a button.



5 Costume Key Functions

You can customize the key functions of this product by downloading the driver from the SANWA website.

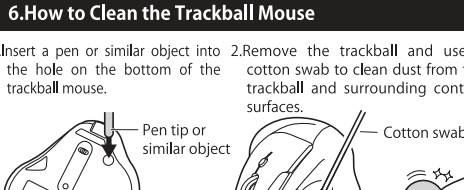
Please scan the QR code below, install the software, and follow the instructions to set up custom key functions.



SANWA Plus

https://www.sanwa.com/cn/wp-content/download/driver/SANWA_Plus.rar

6.How to Clean the Trackball Mouse



3. Place the trackball back into the mouse.

7.Auto Sleep Mode

- The trackball mouse is not used for a period of time, it will enter sleep mode. Click any button to wake the mouse; initially, there may be a slight cursor delay.
- The trackball mouse enters sleep mode while the receiver is disconnected from the computer; it will not wake up even if a button is clicked. Please reconnect the receiver to the computer before attempting to wake it.

8. Troubleshooting

For Both Bluetooth and 2.4GHz Wireless Connections

Q. When I haven't used the trackball mouse for a while, it takes time to react, and I can't move the trackball cursor.

1. Confirm if the pairing (connection) has been interrupted.
2. Check that the power / device switch is ⑧.
3. Ensure the power is not in the OFF state (see section 3, "Preparation Before Use").
4. The battery may be low; please recharge and try again.
5. Verify the DPI switch / pairing LED.

Q. The mouse cursor is not moving smoothly.

1. Tracking performance may decrease when used on reflective surfaces, glass, or polished metal.
2. On metal surfaces, wireless signals may scatter, causing unstable operation; try using the mouse on a thick magazine or mouse pad.

Q. I can't find the Bluetooth settings menu.

1. Does your computer support Bluetooth? Please check the user manual or Device Manager.

Q. I can't connect, or the cursor doesn't move after connecting.

1. If you have other Bluetooth-enabled devices like a smartphone, try connecting the trackball mouse to one of those as well.

Q. The trackball mouse is recognized and connected but isn't working.

1. Check if your computer's Bluetooth drivers are up-to-date; then try again.

(1) Go to "Device Manager" in System Properties.

(2) Under "Bluetooth", double-click your computer's Bluetooth adapter.

(3) The Bluetooth adapter setup may vary depending on your computer. For details, refer to your computer's user manual.

(4) Click "Power Management".

(5) Check "Allow the computer to turn off this device to save power", then click "OK".

Q. I can't move the trackball cursor.

1. Confirm if the pairing (connection) has been interrupted.
2. Check that the power / device switch is ⑧.
3. Ensure the power is not in the OFF state (see section 3, "Preparation Before Use").
4. The battery may be low; please recharge and try again.
5. Verify the DPI switch / pairing LED.

Q. The mouse cursor is not moving smoothly.

1. Tracking performance may decrease when used on reflective surfaces, glass, or polished metal.
2. On metal surfaces, wireless signals may scatter, causing unstable operation; try using the mouse on a thick magazine or mouse pad.

Q. I can't find the Bluetooth settings menu.

1. Does your computer support Bluetooth? Please check the user manual or Device Manager.

Q. I can't connect, or the cursor doesn't move after connecting.

1. If you have other Bluetooth-enabled devices like a smartphone, try connecting the trackball mouse to one of those as well.

Q. The trackball mouse is recognized and connected but isn't working.

1. Check if your computer's Bluetooth drivers are up-to-date; then try again.

(1) Go to "Device Manager" in System Properties.

(2) Under "Bluetooth", double-click your computer's Bluetooth adapter.

(3) The Bluetooth adapter setup may vary depending on your computer. For details, refer to your computer's user manual.

(4) Click "Power Management".

(5) Check "Allow the computer to turn off this device to save power", then click "OK".

For 2.4GHz Wireless Connection

Q. My USB 5Gbps and 2.4GHz peripherals don't work properly when used together.

1. When using a 2.4GHz wireless device on a computer with USB 5Gbps peripherals, interference may cause instability. This is especially common when USB storage devices or hard drives are connected.

Potential issues may include:
●Disconnection of the USB 5Gbps peripheral or keyboard.
●Inability to enter characters with the keyboard.
●If the receiver is separated from the USB 5Gbps trackball or keyboard, the connection will disconnect immediately.

1. Separate the USB 5Gbps device from the receiver.

2. Use a USB extension cable to keep the USB 5Gbps and USB 2.0 ports separate.

3. Connect the receiver to a USB 2.0 port.

9.Compatible Devices & OS

●Compatible Devices-
Suitable for devices that support Bluetooth HOGP, including Windows (DOS/V) computers and tablets, Apple Mac series, iPad, iPhone, Chrome OS computers, and Android smartphones and tablets.

●Compatible OS-
Windows: 11/10/8.1/8, macOS: 14/13/12/11, macOS: 10/14/10/5, Chrome OS, Android: 12, iPadOS 13-15, iOS 13-16

●For macOS, only standard applications with installed scroll wheel drivers, such as Safari, Mail, TextEdit, and Finder, can use the scroll function. However, the scroll wheel cannot be used as a button.

10.Specifications

Bluetooth Version Bluetooth 5.0 BLE (Class 2)

Frequency Range 2.402~2.480GHz

Communication Method HOGP (HID over GATT Profile)

2.4GHz Wireless-
Compatible Model USB 2.0/3.1/3.2/2.0/1.1

Port Type USB A

Wireless Signal 2.4GHz RF Wireless Signal

Transmission Range 10m (33ft) (Line of sight)

Resolution 800 x 600 1600 DPI

Reading Method Optical Sensor (Blue LEDs)

Battery Capacity 500mAh

Continuous Standby Time Approx. 168 hours

Estimated Usable Life Approx. 300 days

Battery Performance (1) Based on 8 hours of daily computer use with mouse operation at 100% battery level.

(2) These values are based on internal company testing. Actual usage time may vary with the product model.

(3) Please note that battery performance will gradually decline over time.

Size/Weight Mouse/Approx. W92 x D114 x H72mm 150g

Receiver/Approx. W12 x D18 x H5mm 15g

Charging Cable/Approx. 0.8m

11.Warranty

One Year

12.Customer Service

support@sanwa.com

FCC Statement

This equipment has been tested and found to comply with the limits for a Class B digital device, pursuant to part 15 of the FCC Rules.

These limits are designed to provide reasonable protection against harmful interference in a residential installation.

This equipment operates using radio frequency energy and, if not installed and used in accordance with the instructions, may cause harmful interference to radio communications.

However, there is no guarantee that interference will not occur in a particular installation. If this equipment does cause harmful interference to radio or television reception, which can be determined by turning the equipment off and on, the user is encouraged to try to correct the interference by one or more of the following measures:

- Reorient or relocate the receiving antenna.
- Increase the separation between the equipment and receiver.
- Connect the equipment into an outlet on a circuit different from that to which the receiver is connected.
- Consult the dealer or an experienced radio/TV technician for help.

Changes or modifications not expressly approved by the party responsible for compliance could void the user's authority to operate the equipment.

This device complies with Part 15 of the FCC Rules. Operation is subject to the following conditions:
(1) This device may not cause harmful interference, and (2) this device must accept any interference received, including interference that may cause undesired operation.

The device has been evaluated to meet general RF exposure requirements. The device can be used without restrictions.

Correct Disposal of This Product

(Recycle Electronic Equipment)

The marking on the product, accessories or literature indicates that the product and its electronic accessories (e.g., chargers, USB cables) should not be disposed of with other household waste.

To prevent possible harm to the environment or human health from uncontrolled waste disposal, please separate these items from other types of waste and recycle them responsibly to promote the sustainable reuse of material resources.

Household users should contact either the retailer where they purchased this product, or their local government office for details of where and how they can take these items for environmentally safe recycling.

Business users should contact their supplier and check the terms and conditions of the purchase contract. The product and its electronic accessories should not be mixed with other commercial wastes for disposal.