



### Install the mounting plate.

For wall installation, the **UP** arrow should point up.  
For an eave or overhang, the arrow should point toward the area you want to monitor for motion.

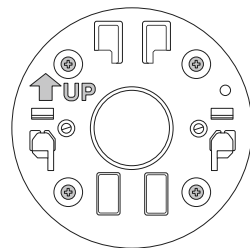
If installing on a wood surface, screw the plate directly into the wall.

If installing on a masonry surface, mark four screw holes using the plate as a guide.

Drill pilot holes using a 1/4" drill bit. Insert the included wall anchors, then drive the four mounting screws through the mounting plate into the wall anchors.

**WARNING!**  
Only use the included mounting screws when securing the mounting plate.

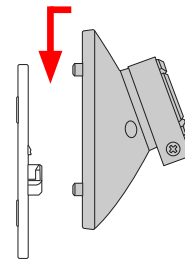
**CAUTION!**  
DO NOT drill into your home's electrical wiring.



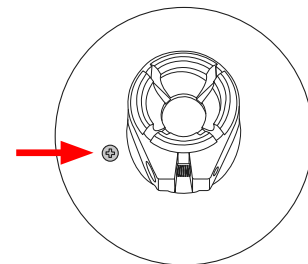
8

### Attach the camera mount.

Slide it onto the mounting plate.



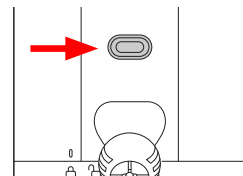
Then, tighten the security screw.



9

### Plug the power adapter into your camera.

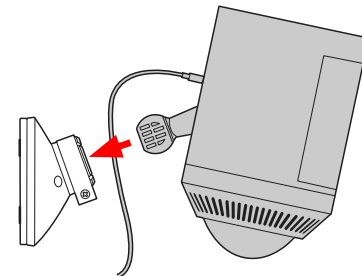
Insert the USB-C end of the power adapter into the back of your camera.



### Attach your camera to the camera mount.

Loosen the metal collar on the camera mount using a Phillips-head screwdriver (not included).

Push the ball joint into the socket until it snaps into place.



10

### Turn on your camera.

Plug the power adapter into a power outlet.

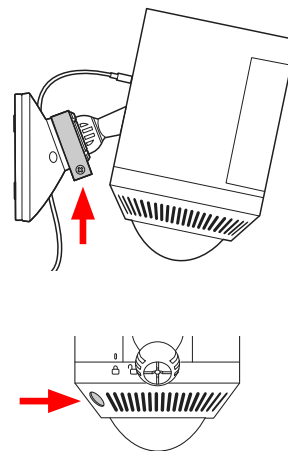
### Adjust the camera angle.

Rotate the camera to focus on the area of your choice. Look at Live View in the Ring app to make sure it's positioned at your desired angle.

### Tighten the security screws.

Tighten the security screw on the metal collar to secure the camera position.

Then, tighten the security screw on the bottom of your camera to secure the battery compartment.

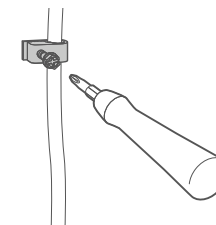


11

### Secure the power cable.

Use the provided cable clips to secure the cable on your wall.

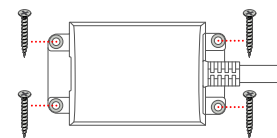
Use a 1/4" drill bit to pre-drill holes in the wall and insert the provided anchors first if installing on a masonry surface, like stucco or brick.



**i** The power cable can be painted to match your wall.

### Secure the adapter.

Secure the power adapter to the wall with the included mounting screws.



12

### Free Ring Protect Plan for 30 days.

Your new device comes with a free, 30-day trial of **Ring Protect**. This comprehensive subscription service lets you review, save, and share your video and photo history anytime so you never miss a moment.\*

To continue using Ring Protect after your free trial ends, visit [ring.com/protect-plans](https://ring.com/protect-plans) to compare plans and pricing.



\*Your free trial isn't applicable for locations with an existing Ring Protect subscription. See [ring.com/protect-plans](https://ring.com/protect-plans) to learn more about your plan's retention period.

ring

For additional help, visit [ring.com/help](https://ring.com/help)  
Or give us a call

US 1 800 656 1918

Canada 1 855 300 7289

Worldwide +1 310 929 7085

For a list of all our customer support numbers, visit [ring.com/callus](https://ring.com/callus)

For information on our warranty, theft protection, and Ring Protect Plans, visit [ring.com/legal](https://ring.com/legal)

© 2022 Ring LLC or its affiliates. Ring and all related marks are trademarks of Ring LLC or its affiliates.

