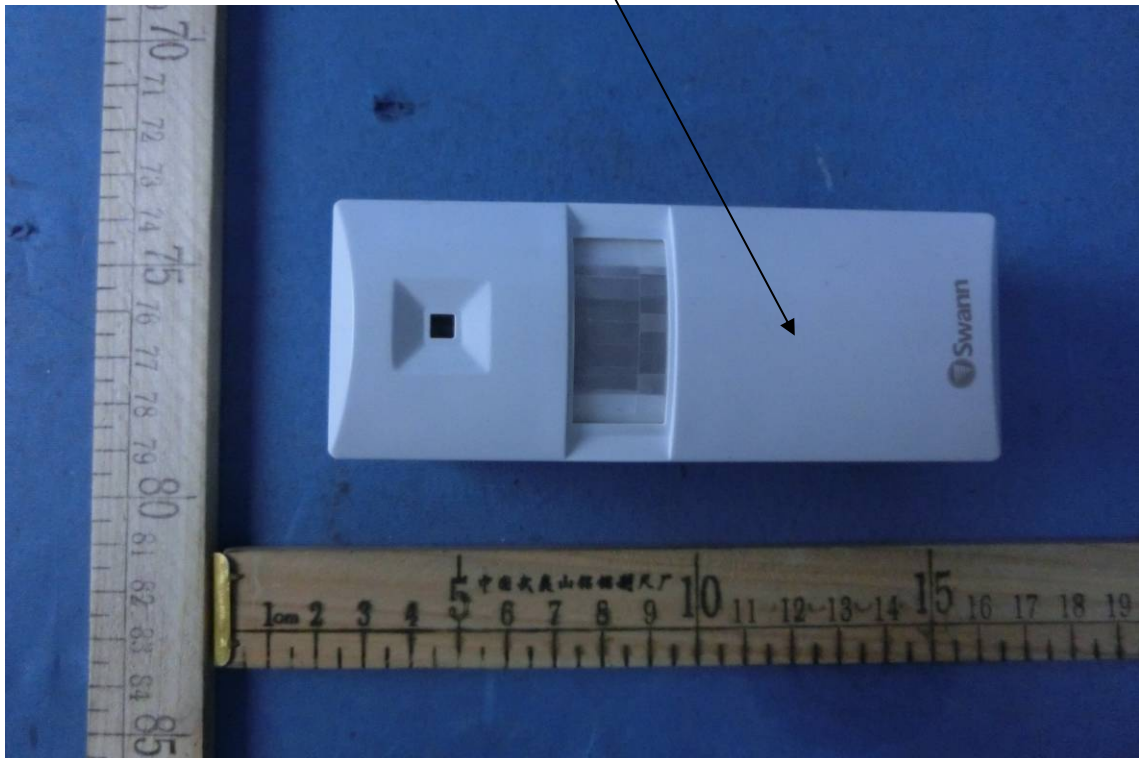


# FCC ID LABELING AND LOCATION

## FCC ID Label

PIR sensor  
Model NO.: QH-9826A-PIR  
FCC ID: 2AAV8QH9826A

## FCC ID Label Location



The label shown shall be permanently affixed at a conspicuous location on the device and be readily visible to the user at the time purchase (Labeling requirements per 2.925)