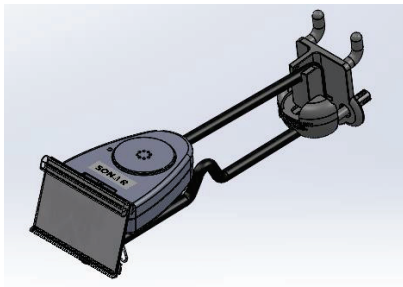
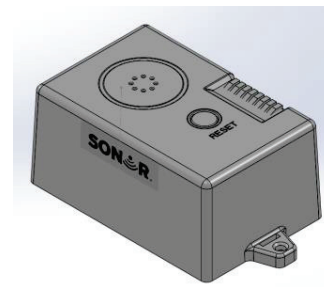


## SONAR HOOK AND RECEIVER OPERATIONS



Hook

**R-SONR-XX-A**



Receiver

**R-SONR-REC-XA** (Without Auxiliary Ports)

**R-SONR-REC-PXA** (With Auxiliary Ports)

Sonar system can be purchased in 3 different frequencies to operate independently in the same area.

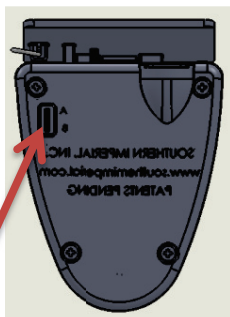
The hook has a two position switch on the bottom side setting as A and B. The Receiver has corresponding switch A and B on the side.

### Operation modes for R-SONR-REC-XA and R-SONR-REC-PXA Audio Beep and Alarm

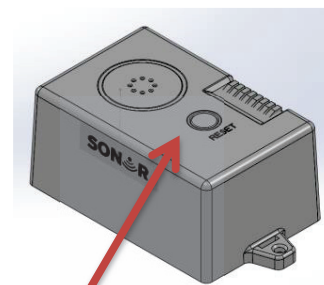
1. **B Mode:** The hook will signal (Beep) once every time the label lid is lifted up. The receiver switch should be set to **B**. The receiver will mimic the hook remotely.
2. **A Mode:** The hook will alarm if lid opens and closes more than 4 times in 10 seconds. The hook will also alarm for 5 seconds. The Receiver will need to be set in the **A** mode to correspond with the hook's audio remotely. The receiver has a reset button on the top to turn off the audio, in alarm mode, but the hook will continue to alarm for 5 seconds.

### Operation modes for R-SONR-REC-PXA with auxiliary ports

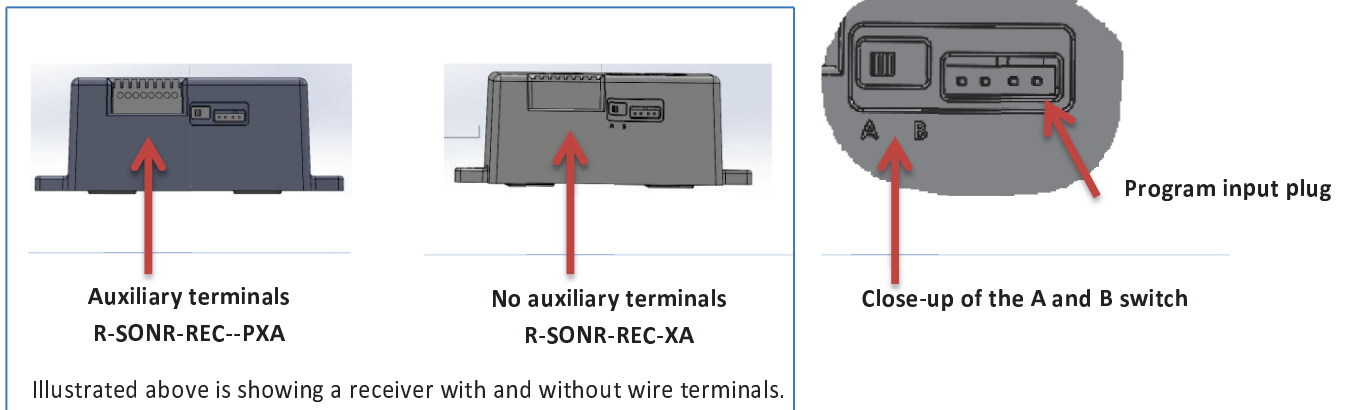
1. The receiver's audio in **A** mode will mimic the hook beep and alarm. The output terminals will also activate when in the alarm sequence. The reset button will turn the alarm off on the receiver only. The hook will continue to alarm for 5 seconds.
2. The receiver audio in **B** mode will only mimic the hook beep with no alarm sequence at the receiver. The auxiliary ports will still activate when receiving an alarm signal from the hook alarm.



A and B switch

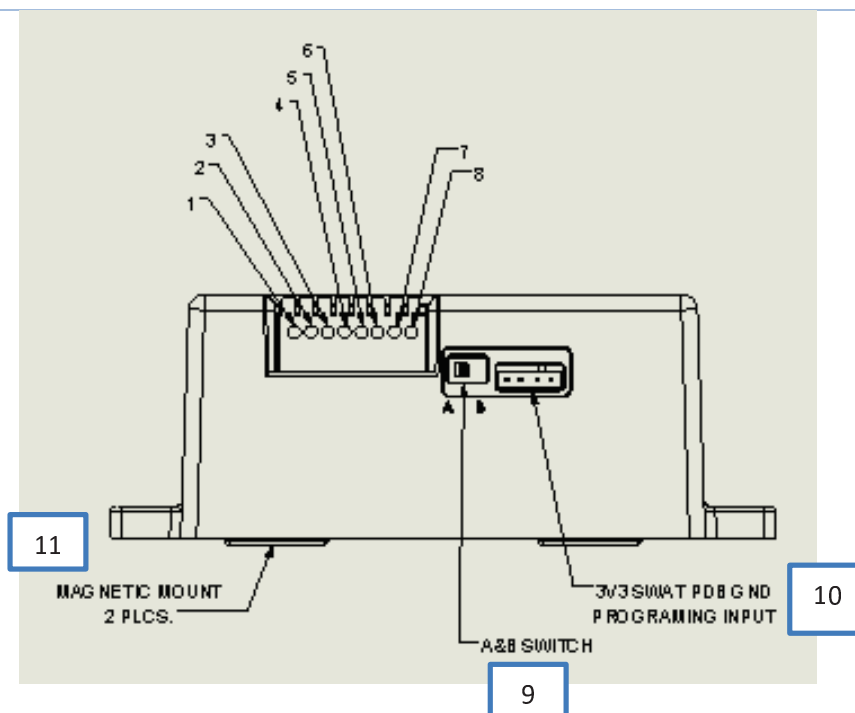


Reset bottom for audio alarm



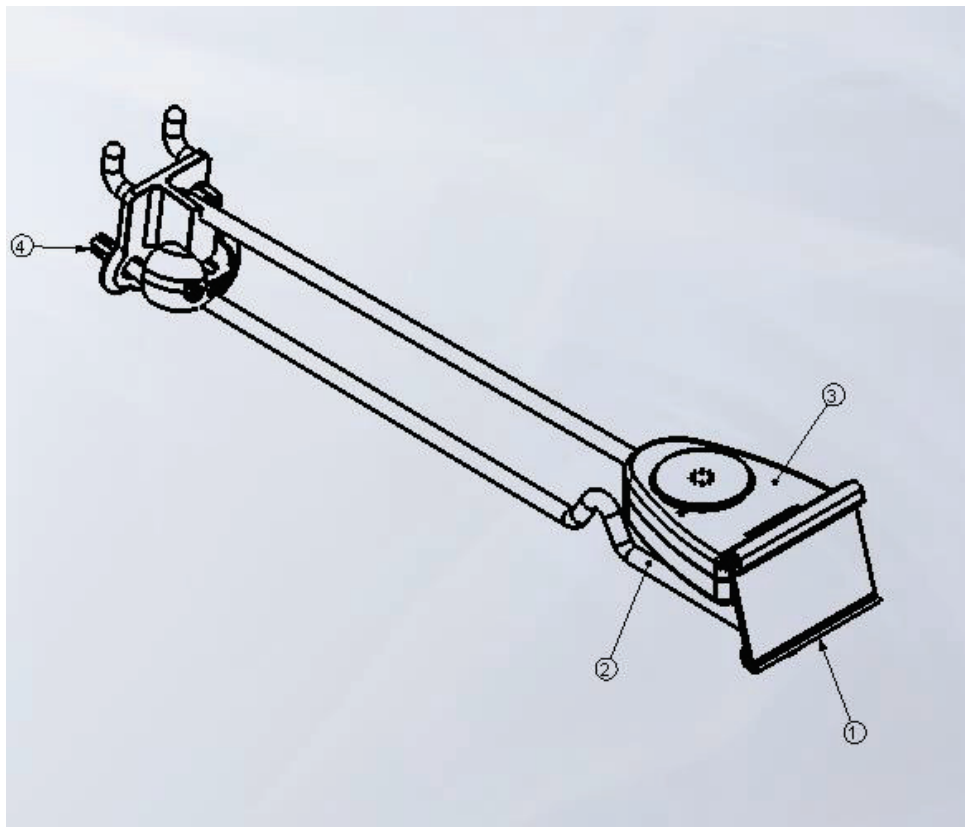
Both the Hook and Receiver run on batteries, which are included. Hook uses a CR2430 and the receiver uses 3 AAA batteries

### R-SONR-REC—PXA System Connections



- |                    |                                      |
|--------------------|--------------------------------------|
| 1. NC2             | Normally Closed 2                    |
| 2. C2              | Contact 2 for Normally Closed & Open |
| 3. NO2             | Normally Open 2                      |
| 4. NO1             | Normally Open 1                      |
| 5. C1              | Contact 1 for Normally Closed & Open |
| 6. NC1             | Normally Closed 1                    |
| 7. VTRG +5V        | +5 Volt out                          |
| 8. GND             | Ground                               |
| 9. A&B             | Switch modes A                       |
| 10. 3V3            | 3V3 SWAT PDB Programming             |
| 11. Magnetic Mount | Mounting magnets for metal surface   |

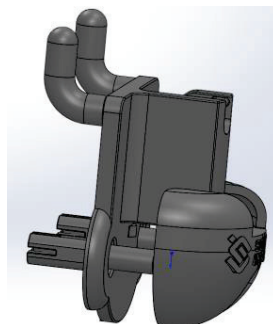
## Hook with Locking Backer plate



1. Label holder
2. Security Hook with anti-sweep "V" bend
3. Sonar Electronic Security housing
4. Built-in Locking Backer Plate (OPTIONAL BACKER)

Backer Plate

Locking Cap



### Installation for locking Backer

1. Insert backer plate in pegboard
2. Insert locking cap flush to backer

Locking backer plate mounted to pegboard

OPTIONAL BACKER

### **FCC Statement**

This equipment has been tested and found to comply with the limits for a Class B digital device, pursuant to part 15 of the FCC rules. These limits are designed to provide reasonable protection against harmful interference in a residential installation. This equipment generates, uses and can radiate radio frequency energy and, if not installed and used in accordance with the instructions, may cause harmful interference to radio communications. However, there is no guarantee that interference will not occur in a particular installation. If this equipment does cause harmful interference to radio or television reception, which can be determined by turning the equipment off and on, the user is encouraged to try to correct the interference by one or more of the following measures:

- Reorient or relocate the receiving antenna.
- Increase the separation between the equipment and receiver.
- Connect the equipment into an outlet on a circuit different from that to which the receiver is connected.
- Consult the dealer or an experienced radio/TV technician for help.

To assure continued compliance, any changes or modifications not expressly approved by the party.

Responsible for compliance could void the user's authority to operate this equipment. (Example- use only shielded interface cables when connecting to computer or peripheral devices).

This equipment complies with Part 15 of the FCC Rules. Operation is subject to the following two conditions:

- (1) This device may not cause harmful interference, and
- (2) This device must accept any interference received, including interference that may cause undesired operation.

RF warning statement:

The device has been evaluated to meet general RF exposure requirement.  
The device can be used in portable exposure condition without restriction.