

806-2700MHz 全向玻璃钢天线

806-2700MHz Omnidirectional Fiberglass Antenna

AMXF-8027-5

特点 Feature:

- 外观精美 Exquisite appearance
- 防冲击、防水、防腐能力强 Good impact resistance, waterproofing and anticorrosion ability
- 全天候工作 Full day working
- 优化的尺寸 Optimized dimension
- 高增益、低驻波、抗干扰能力强 High gain, low standing wave, strong anti-interference ability

应用 Application:

- GSM/CDMA/PCS/3G/WLAN/LTE 系统
GSM/CDMA/PCS/3G/WLAN/LTE system
- 点对多点 Point-to-multipoint system

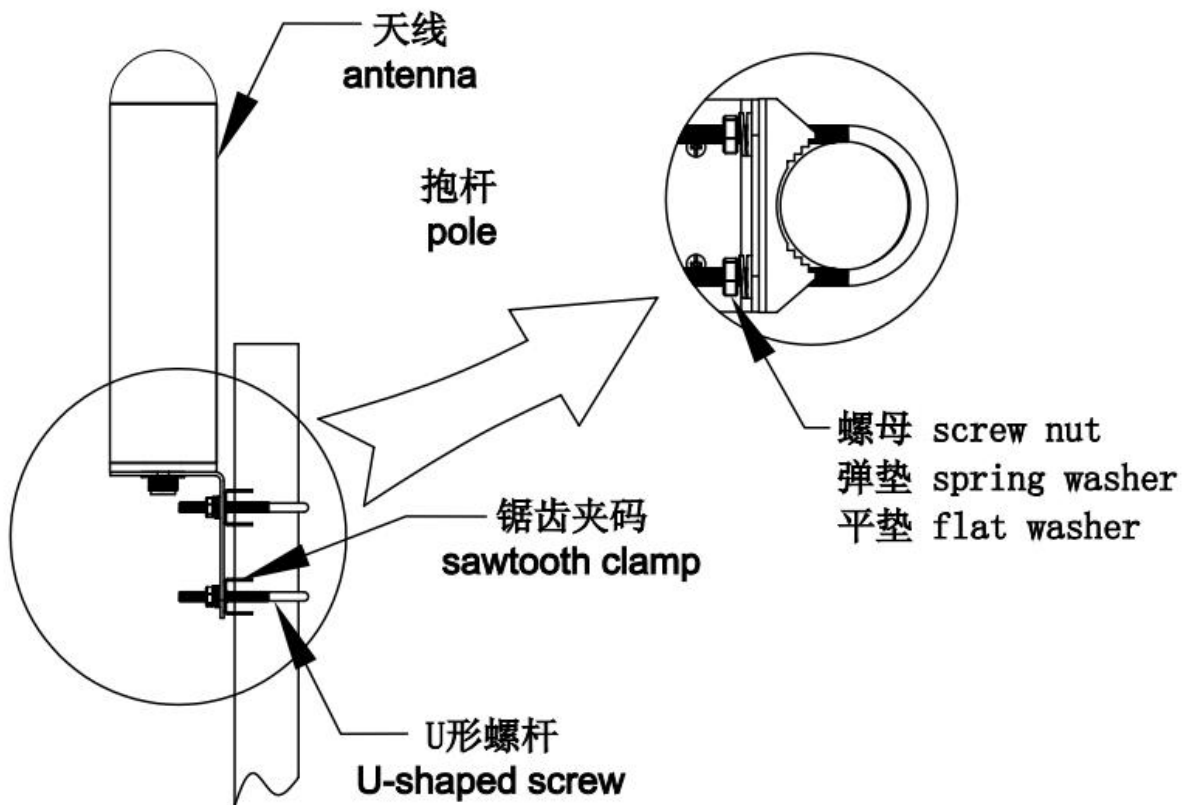


| AMXF-8027-5 | |
|-----------------------------------|----------------------------------|
| 电气参数 Electrical Specifications | |
| 频率范围 Frequency range (MHz) | 806~960/1710~2700 |
| 带宽 Bandwidth (MHz) | 154/990 |
| 增益 Gain (dBi) | 3/5 |
| 半功率波瓣宽度 Half-power beam width (°) | H:360 V:55/45 |
| 电压驻波比 VSWR | ≤2.0 |
| 输入阻抗 Input Impedance (Ω) | 50 |
| 极化方式 Polarization | 垂直 Vertical |
| 最大功率 Maximum input power (W) | 100 |
| 雷电保护 Lightning protection | 直流接地 DC Ground |
| 接头型号 Input connector type | N 型母头或用户指定 N Female or Requested |
| 机械参数 Mechanical Specifications | |
| 天线尺寸 Dimensions (mm) | Φ60*170 |
| 天线重量 Antenna weight (kg) | 0.56 |
| 工作温度 Operating temperature (°C) | -40~60 |
| 极限风速 Rated Wind Velocity (m/s) | 60 |
| 天线罩颜色 Radome color | 白色 White |
| 安装方式 Mounting way | 抱杆式 Pole-holding |
| 抱杆直径 Mounting hardware (mm) | Φ 35-Φ 50 |

天线安装使用说明书

Antenna Installation Instructions

一、安装示意图 Install as the picture below



二、安装说明 Installation Steps

- 1.将 M6 的 U 形螺杆穿过夹码上的孔位，把天线固定在外径大约为 $\phi 35 \sim \phi 50\text{mm}$ 的抱杆上，放上平垫、弹垫，然后拧紧所有螺母。

Place the M6 U-shape screw through the holes on the clamps to mount the antenna to the pole whose outer diameter is $\phi 35 \sim \phi 50\text{mm}$. Then put on the flat washer, the spring washer and twist all the nuts.

- 2.天线的架设高度离地面应大于 3 米，且附近无高大建筑或较大金属体，无遮挡等。

There should be at least three meters between the ground or floor and the antenna above. No huge building or metal object or any other obstacle or shelter nearby.

- 3.适当调整天线的安装高度，使其接收的信号为最好，并把天线的接头连接端密封好。

Adjust the mounting height of the antenna to the proper position to receive the best signal, then seal all the connections.

- 4.注意避雷保护。Please pay attention to lightning protection.