

---

# **Jaguar Wave User Guide for Wireless Gigabit Adapter (with Windows 10 WDI Driver)**

Version 1.4

---

# 1.Establishing a 60GHz Network

## 1.1 Creating WiGig Network by MiFi's WiGig and Adaptor

The Jaguar Wave Wireless Gigabit Adapter uses IEEE 802.11ad protocol for connecting WiGig AP of MiFi directly to create a wireless LAN network. The instructions for accomplishing this are listed below.

Note: Images in this document may differ slightly from those on your display.

1. Enable MiFi's WiGig AP
  - a. Boot up MiFi by pressing power button for 3 sec
  - b. Switch to WiFi setup page (up-left of Figure 1) of MiFi by pressing MiFi power button
  - c. Double press power button to set up WiGig function (up-right of Figure 1) and then enable/disable WiGig function by double pressing power button (down-left of Figure 1)
  - d. Leave WiFi setup page by double pressing button (down-right of Figure 1)

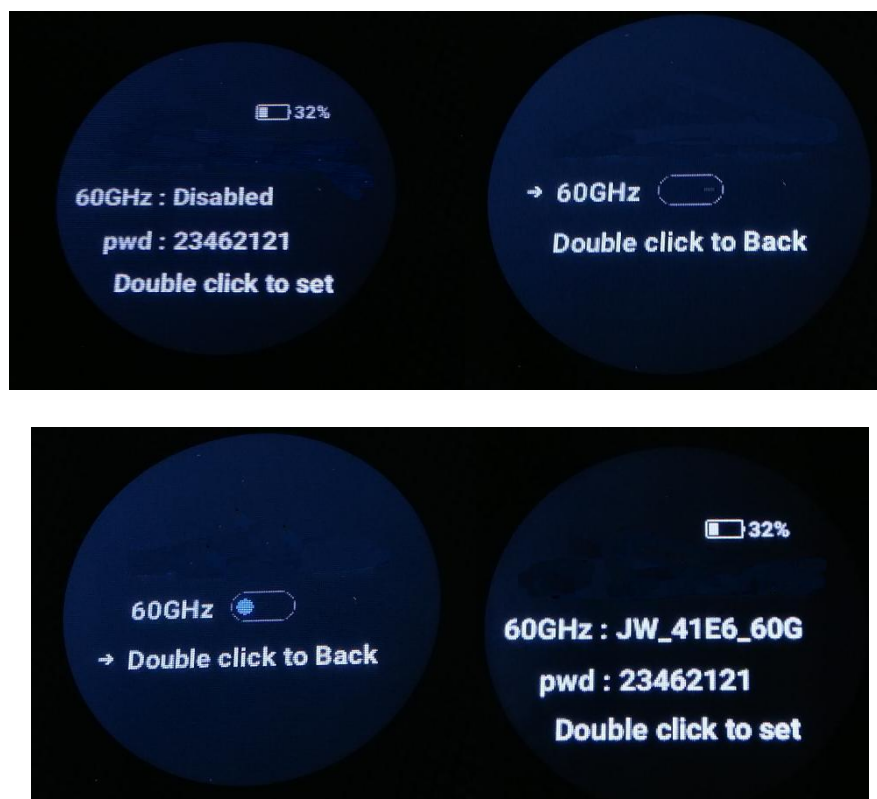


Figure 1: steps to enable WiGig AP of MiFi

2. Install Windows WDI driver to Windows 10 system (1709 or above version). **Note that Windows WDI driver is not supported by Windows 7 system.**
  - a. Double click wigig-setup program (Figure 2) to install its WDI driver.
  - b. Proceed with installation until complete (Figure 3).
  - c. WiGig WDI driver is now installed and ready to use on the host. In Device Manager, WiGig WDI driver will be listed under network adapters when WiGig adapter is connected (Figure 4).

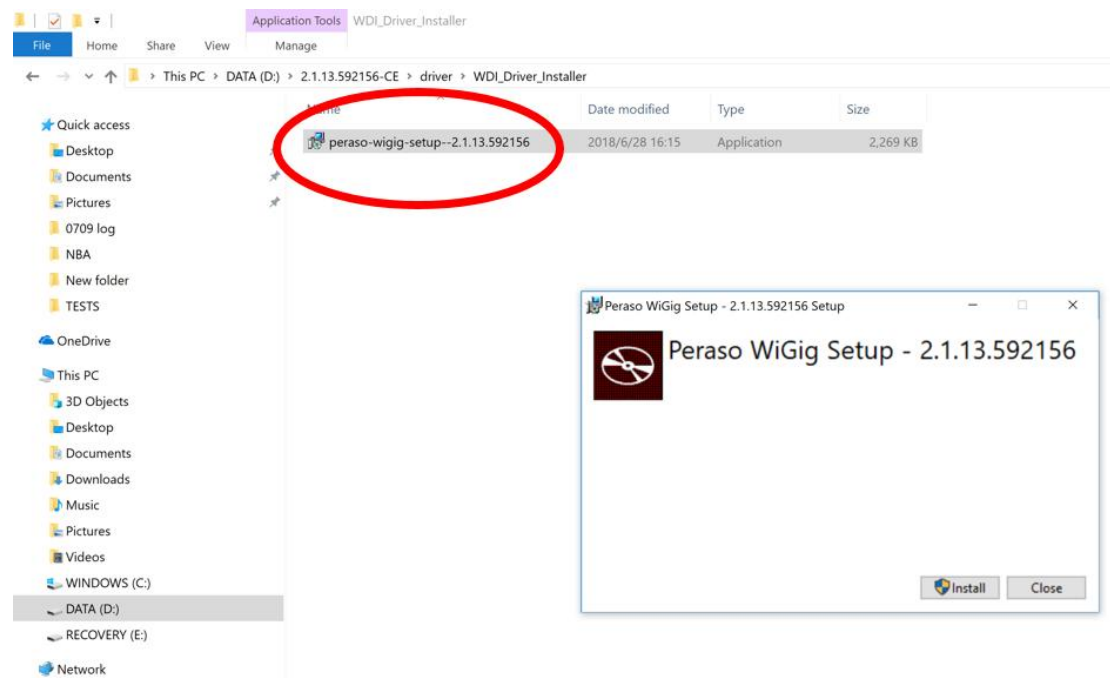


Figure 2: WiGig WDI driver installation

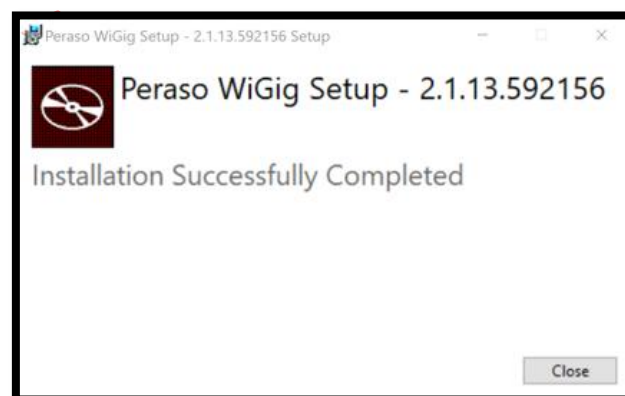


Figure 3: WiGig WDI driver installation completed

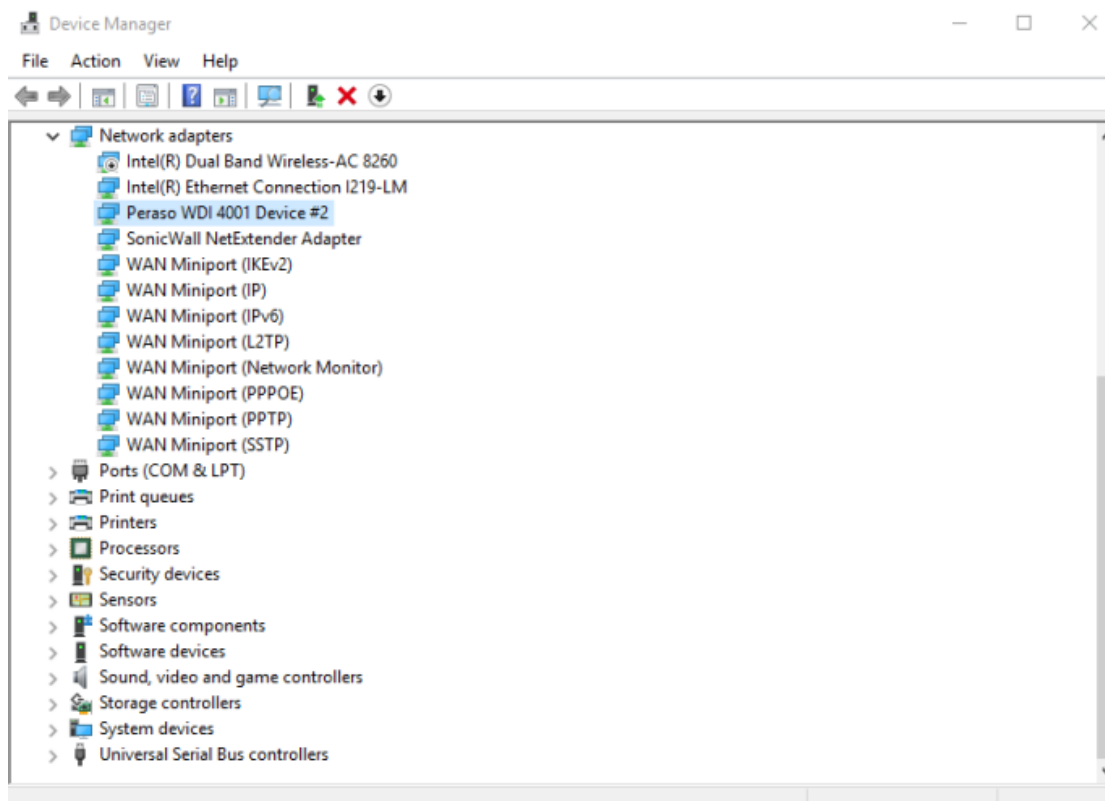


Figure 4: WiGig WDI driver listed under network adapters *when WiGig adapter connected*

3. Connect Wireless Gigabit Adapter to WiGig AP of MiFi (Figure 5)
  - a. Connect the adapter to a **USB 3.0** port of Windows laptop/PC.
  - b. Click the wireless icon in the notification area of Windows 10 desktop.
  - c. Select the 60GHz network you want to connect.
  - d. Check the **Connect automatically** option.
  - e. Click the **Connect** button and **secure password is shown on MiFi panel**
  - f. Wireless Gigabit Adapter status LED will change from flashing green to flashing blue after successful connectivity.

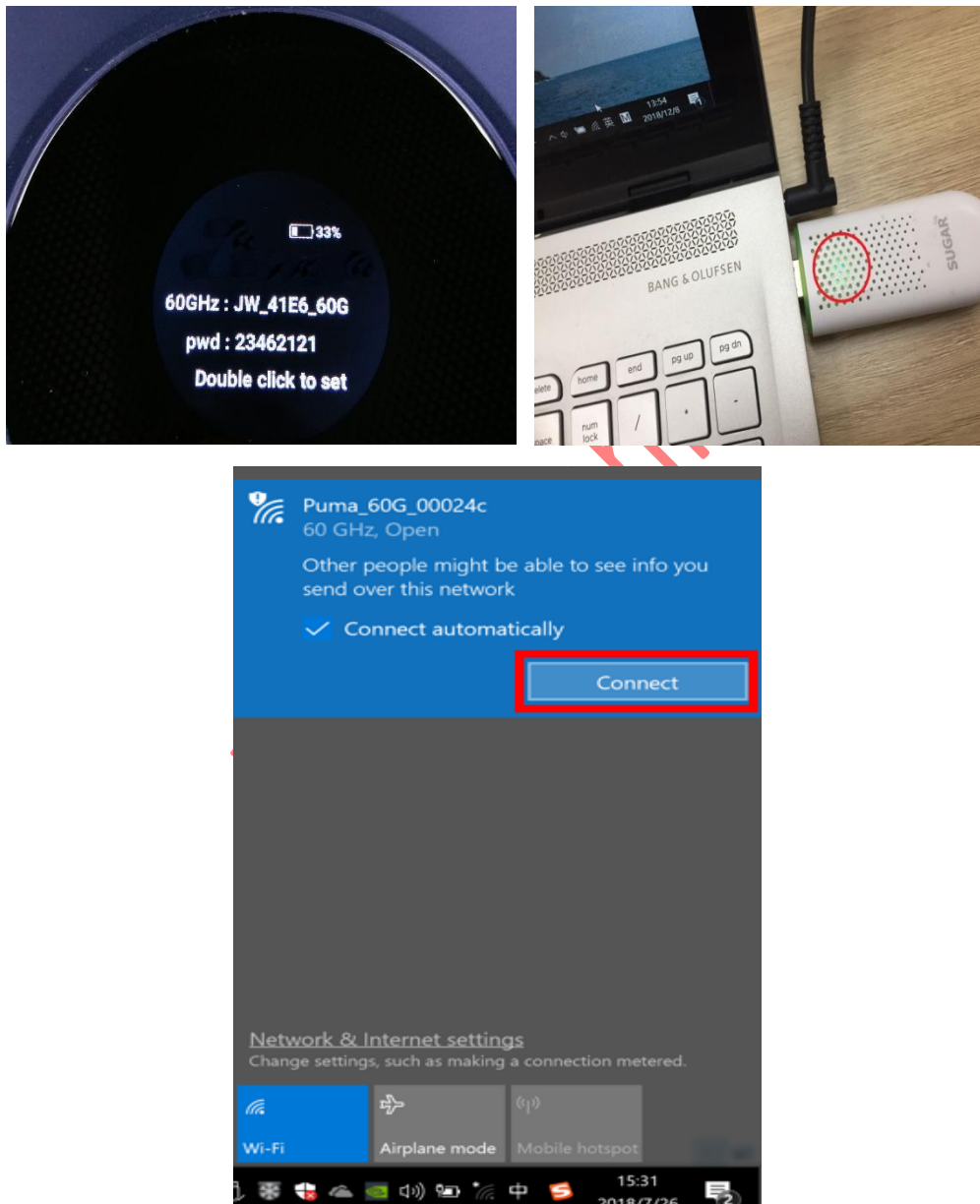


Figure 5: Set up wireless connectivity from Wireless Gigabit Adapter to MiFi WiGig (60GHz)

**IMPORTANT: WiGig is equipped with directional antenna. Please keep the distance between adapter and MiFi about 1 meter to get the best experience.**

- 
4. Disconnect Wireless Gigabit Adapter from WiGig AP (Figure 6)
    - a. Click the wireless icon in the notification area of Windows 10 desktop.
    - b. Select the 60GHz network you are connecting.
    - c. Click the **Disconnect** button.

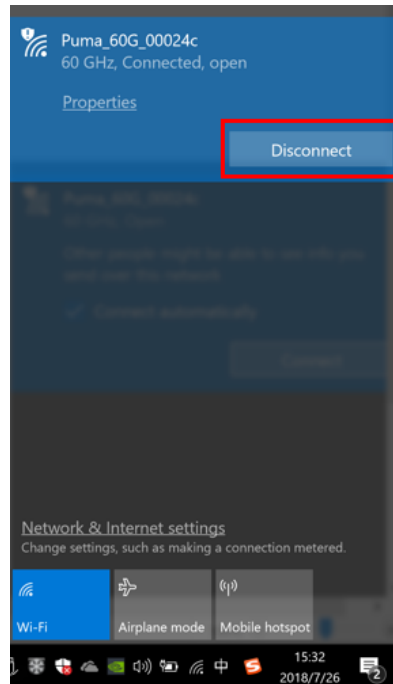


Figure 6: Disconnect WiGig adapter from WiGig MiFi

---

**Federal Communications Commission (FCC) Interference Statement**

This equipment has been tested and found to comply with the limits for a Class B digital device, pursuant to Part 15 of the FCC Rules.

These limits are designed to provide reasonable protection against harmful interference in a residential installation. This equipment generate, uses and can radiate radio frequency energy and, if not installed and used in accordance with the instructions, may cause harmful interference to radio communications.

However, there is no guarantee that interference will not occur in a particular installation. If this equipment does cause harmful interference to radio or television reception, which can be determined by turning the equipment off and on, the user is encouraged to try to correct the interference by one of the following measures:

- Reorient or relocate the receiving antenna.
- Increase the separation between the equipment and receiver.
- Connect the equipment into an outlet on a circuit different from that to which the receiver is connected.
- Consult the dealer or an experienced radio/TV technician for help.

This device complies with Part 15 of the FCC Rules. Operation is subject to the following two conditions:

(1) This device may not cause harmful interference, and (2) this device must accept any interference received, including interference that may cause undesired operation.

FCC Caution: Any changes or modifications not expressly approved by the party responsible for compliance could void the user's authority to operate this equipment.

**RF exposure warning**

This equipment complies with FCC radiation exposure limits set forth for an uncontrolled environment.

This product may not be collocated or operated in conjunction with any other antenna or transmitter.