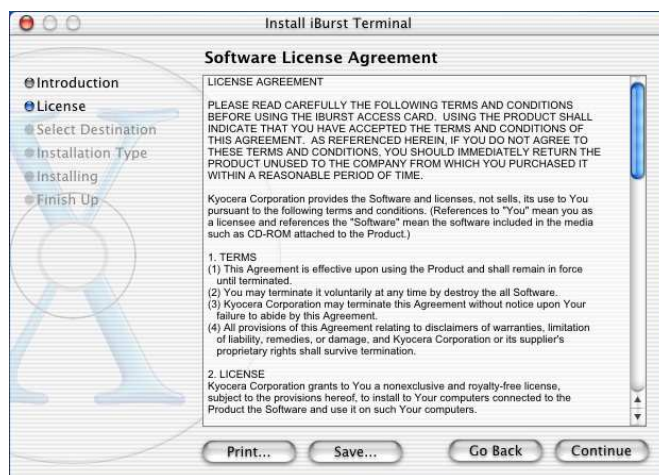
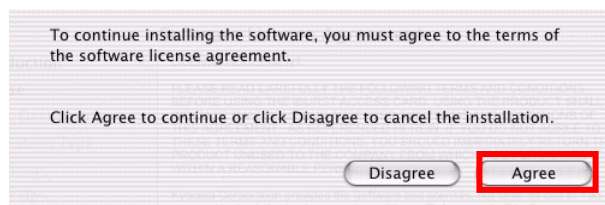


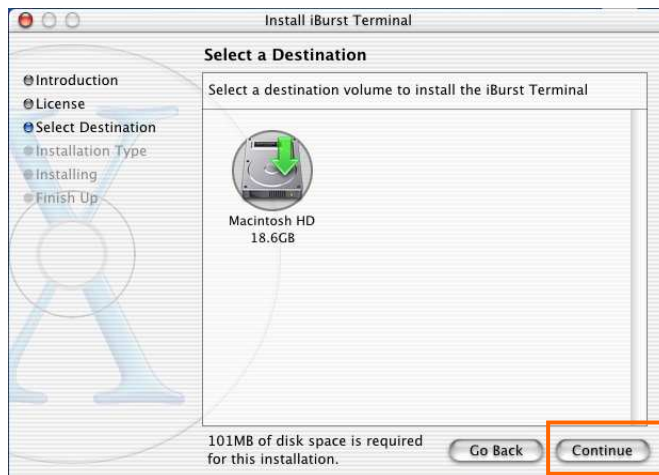
7. Click the **[Continue]** button.



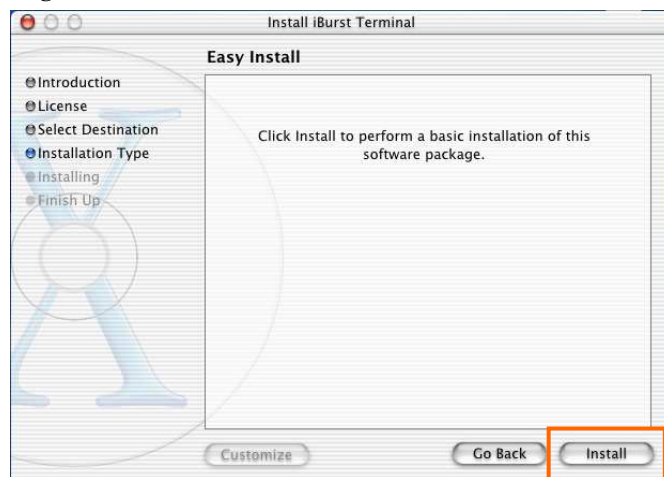
8. The following dialog will appear, click the **[Agree]** button.



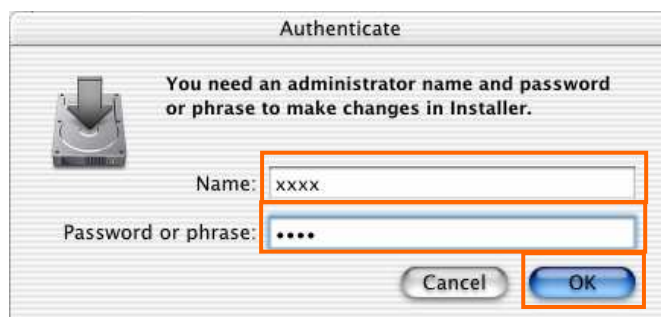
9. Select a destination disk, and then click the **[Continue]** button.



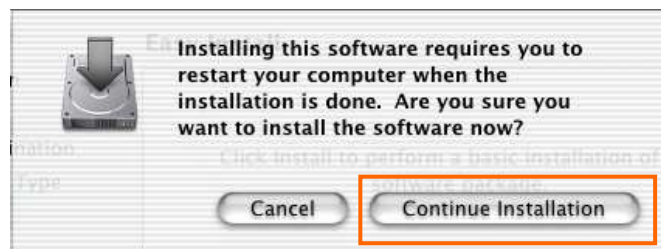
10. Click the **[Install]** button after appearing dialog window as shown below.



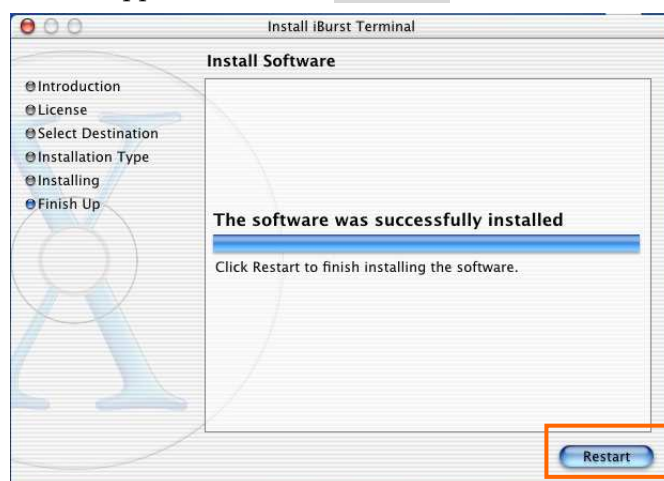
NOTE: In case of version 10.4, Authentication dialog will appear at here.



11. Click the **[Continue installation]** button.



12. When finish installing, the dialog shown below will appear. Click the **[Restart]** button.



NOTE: To connect to the Internet, refer to page 69.

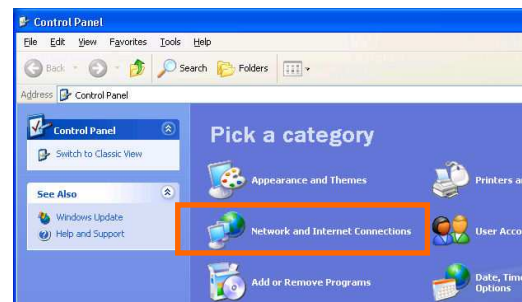
Connection Establishment

Connection Establishment for Windows XP

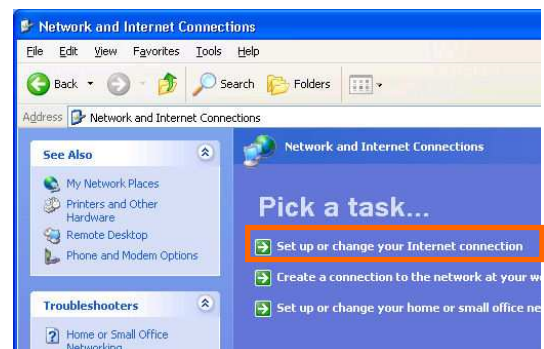
1. Make sure to connect the iBurst Terminal with your PC via USB cable or Ethernet cable.
2. Click the [Start] button, followed by selecting [Control Panel] as shown below.



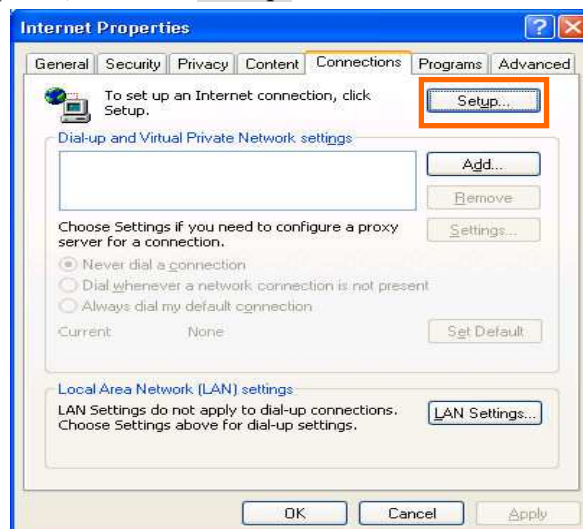
3. Click [Network and Internet Connections] in the [Control Panel] display.



4. Next, click [Set up or Change your Internet connection].



5. When the [Internet Properties] dialog window appears, click the [Setup] button.

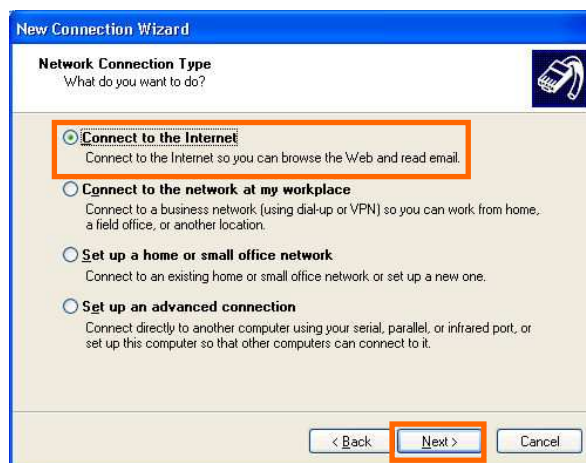


6. [New Connection Wizard] will begin and the dialog window as shown below will appear.

Click the [Next >] button in the dialog window.



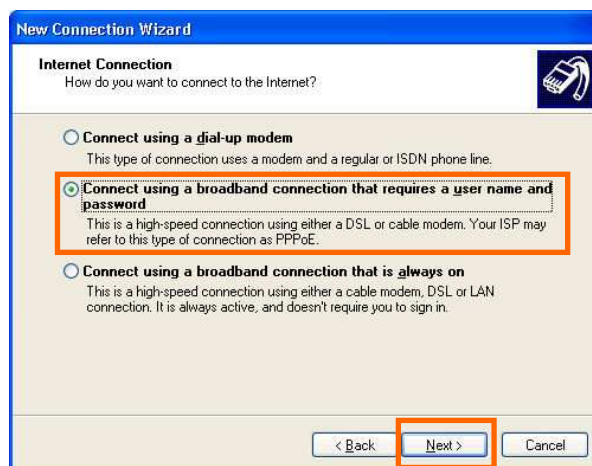
7. Select [Connect to the Internet] and click the [Next >] button.



8. Select [Set up my connection manually] and click the [Next >] button.



9. Select [Connect using a broadband connection that requires a user name and password] and click the [Next >] button.



10. Fill in [ISP Name] edit box with an ISP Name, followed by clicking the [Next >] button. Note that any ISP name is acceptable.
ISP Name is “iBurst” for example.



11. Enter user name and password and make sure that the [Make this the default Internet connection] check box is checked. Click the [Next >] button.

Check it if you want.

Nothing in case SP2 of Windows XP.

New Connection Wizard

Internet Account Information
You will need an account name and password to sign in to your Internet account.

Type an ISP account name and password, then write down this information and store it in a safe place. (If you have forgotten an existing account name or password, contact your ISP.)

User name: XXXXXX
Password: XXXXXX
Confirm password: XXXXXX

☒ Use this account name and password when anyone connects to the Internet from this computer
☒ **Make this the default Internet connection**
☒ Turn on Internet Connection Firewall for this connection

< Back **Next >** Cancel

12. Click the [Finish] button.

Check it if you want.

New Connection Wizard

Completing the New Connection Wizard

You have successfully completed the steps needed to create the following connection:

iBurst

- Make this the default connection
- Share with all users of this computer
- Use the same user name & password for everyone

The connection will be saved in the Network Connections folder.

☐ Add a shortcut to this connection to my desktop

To create the connection and close this wizard, click Finish.

< Back **Finish** Cancel

13. When the [Network and Internet Connection] window pane appears again, click [Set up change your Internet Connection].

Network and Internet Connections

File Edit View Favorites Tools Help

Address: Network and Internet Connections

See Also

- My Network Places
- Printers and Other Hardware
- Remote Desktop
- Phone and Modem Options

Troubleshooters

- Home or Small Office Networking
- Internet Explorer
- Network Diagnostics

Pick a task...

- Set up or change your Internet connection**
- Create a connection to the network at your workplace
- Set up or change your home or small office network

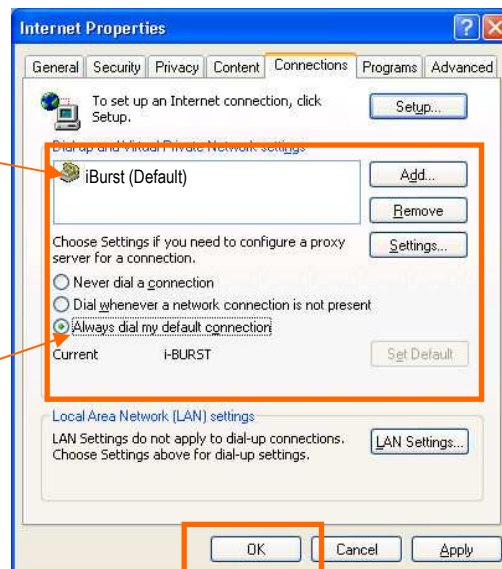
or pick a Control Panel icon

- Internet Options
- Network Connections

14. When the [Internet Properties] dialog window appears and the [Connections] pane is displayed, confirm the connection name and make sure that the [Always dial my default connection] radio button is checked, followed by clicking the [Apply] button. Then, click the [OK] button to close the dialog window.

The ISP name specified at step 10 above must be the default connection.

Select "Always dial ...".



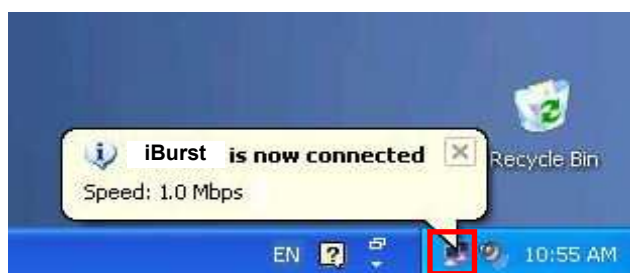
15. At this point, the connection configuration is completed. When you open Internet Explorer, the [Dial-up Connection] dialog window as shown below will appear. Click the [Connect] button to connect to the network.

NOTE:

If you don't choose "Always dial my default connection" at step 14 above, you have to open this dial-up connection dialog manually every when you want to connect to the Internet.



16. When the connection establishment process is complete, a message indicating completion of the connection will appear at the task tray as shown below.



Connection Establishment for Windows 2000/Me/98SE

NOTE: You have to execute the procedure in this section every when you want to connect to the Internet.

1. Make sure to connect the iBurst Terminal with your PC via USB cable or Ethernet cable..
2. Double click the shortcut icon on the PC desktop; or click [Start] -> [Programs] -> [iBurst Terminal] -> [iBurst_Terminal Connect UTL]



3. Enter user name and password and click the [Connect] button.

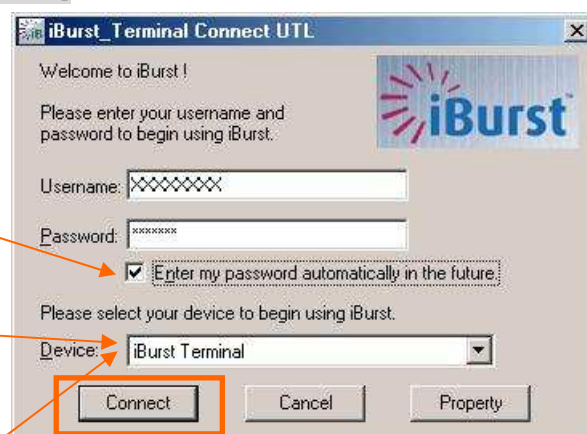
In case of UBS connection:

"iBurst Terminal" shall be selected.

In case of Ethernet connection:

"Ethernet Adaptor Name" shall be selected.

Check it if you want.



NOTE: 'Cancel' to close the dialog.
'Property' to open properties of the dial-up connection for iBurst Terminal.

4. While connecting to network, the following connection status window is displayed.



5. When logging on successfully, a network connection icon will be displayed at the task tray.

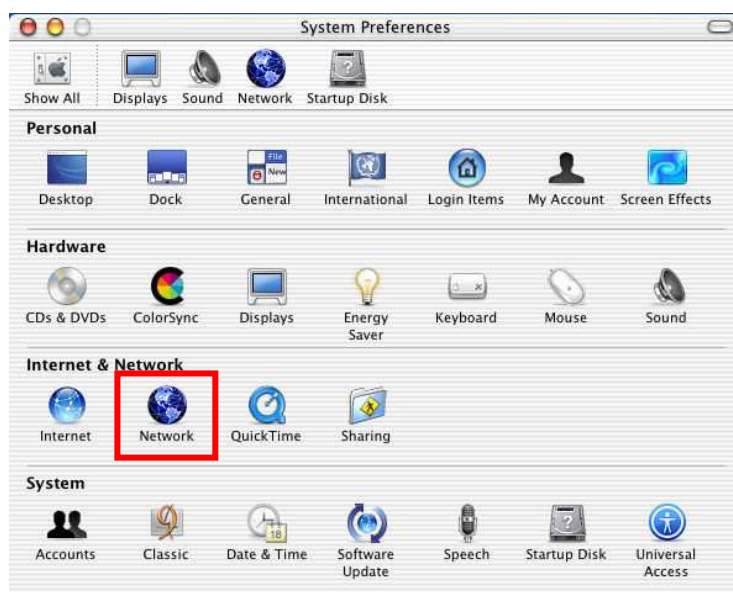


Connection Establishment for Mac OS X

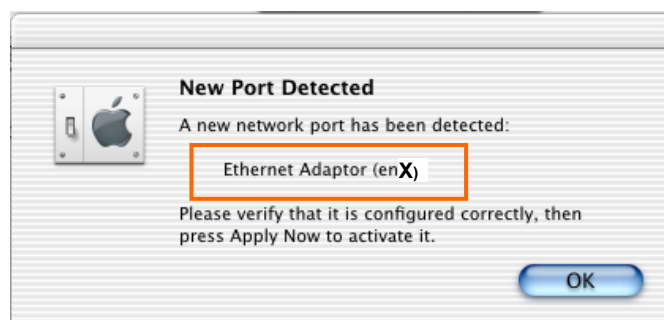
1. Make sure to connect the iBurst Terminal with your PC via USB cable or Ethernet cable.
2. Select [System Preferences...] on the Apple menu.



3. Click [Network] in the [System Preferences] window.



4. After the 1st connection with the iBurst Terminal via USB cable, you will find the pop-up shown below. Take note the name of the new port. Click [OK].



5. Click on the drop down menu of the [Show]; and
Select [Ethernet Adaptor (en X)] indicated in the previous step in case of USB connection; or
Select appropriate “Ethernet” interface in case of Ethernet connection, “Built-in Ethernet” for example.

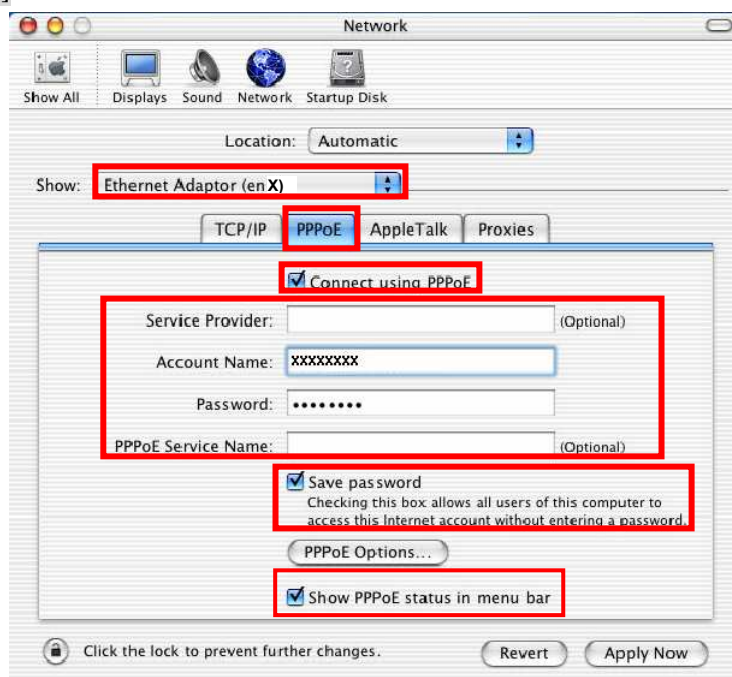
NOTE: The ‘X’ in the “en X” is the port number and it shall be the biggest one among them when 1st connection.

Additionally, set as follows.

- Select the [PPPoE] tab.
- Check [Connect using PPPoE].
- Enter [Account Name] provided by the network operator.
- Enter [Password] provided by the network operator.
- Check [Save password] If you require the computer to remember your password.
- Check [Show PPPoE status in menu bar].

NOTE: If uncheck this option, you cannot see the icon described in the step 9.

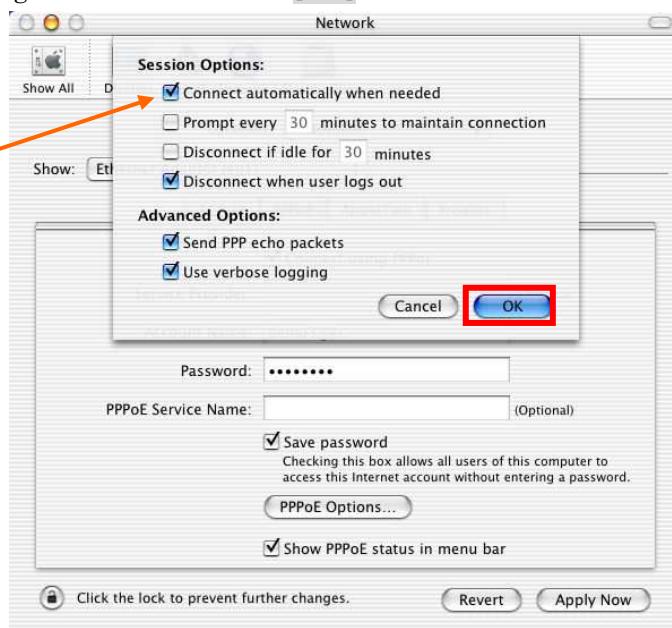
- And then, click [PPPoE Options...]



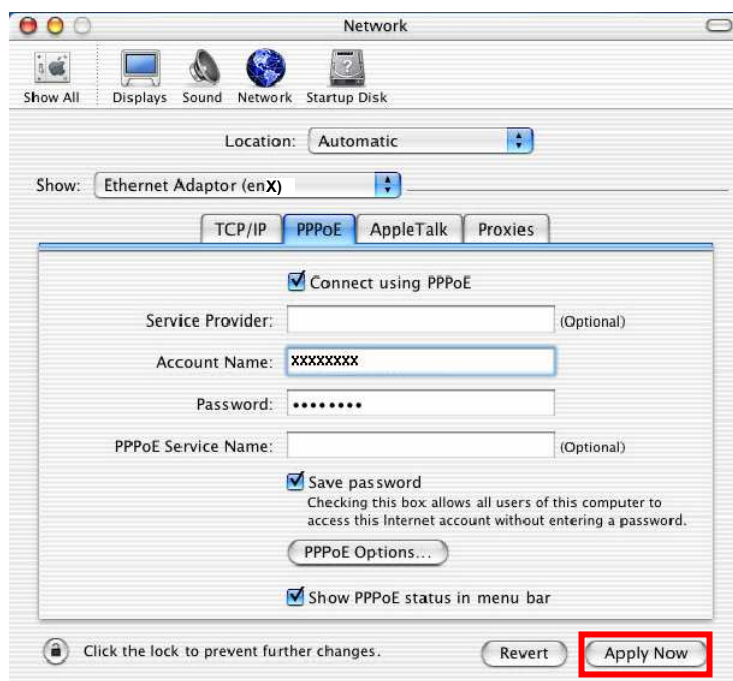
6. On the PPPoE Options dialog, set everything as follows and click [OK].

NOTE:

If you don't enable "Connect automatically when needed", you have to make a PPPoE connection following the procedure described in the next page every when you want to connect to the Internet.



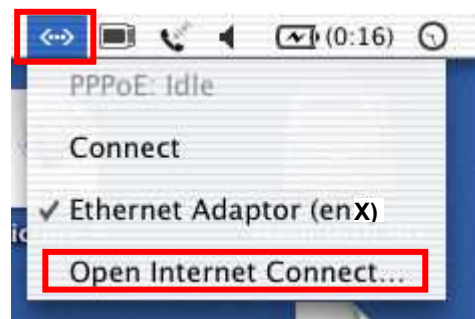
7. Click the [Apply Now] button.



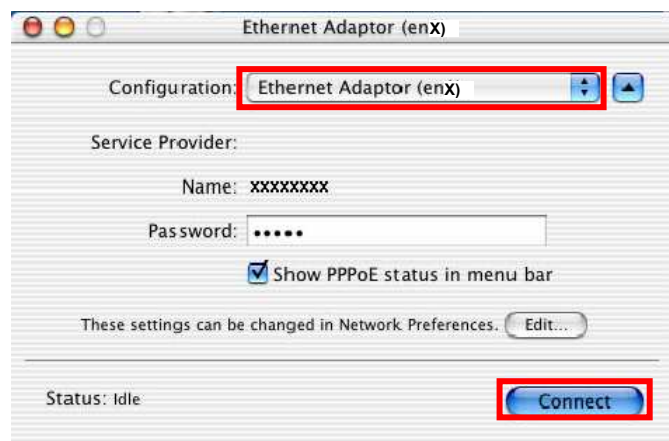
8. At this point, the connection configuration is completed. When you open any internet application software, e.g. a web browser, the internet connectivity will be activated automatically.

NOTE: To check the internet connectivity only in case of using a USB cable, follow the steps below.

9. Click the <---> icon at the top right of screen, and select the Ethernet Adapter you choose in step 5. In addition, click <---> again and choose [Open Internet Connect]

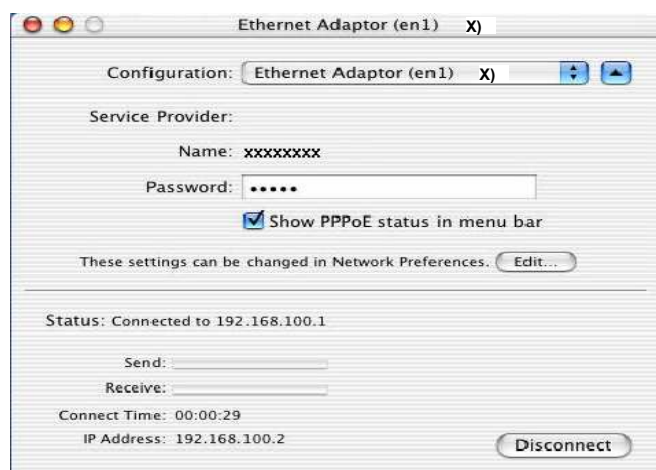


10. Click on drop down menu of [Configuration], and select [Ethernet Adaptor (en X)].
The configuration of [Ethernet Adaptor (en X)] will be displayed, click the [Connect] button.



NOTE: In case of version 10.4, dialog layout is different and you can find the adapter by expanding icon array, clicking ">>", at the top of the dialog.

11. When the box [Show PPPoE status in menu bar] is checked, PPPoE Status [Connected] will be displayed after having finished connection. However, Ethernet Adaptor display will little differ by OS Version.



Chapter 3


Utility Software

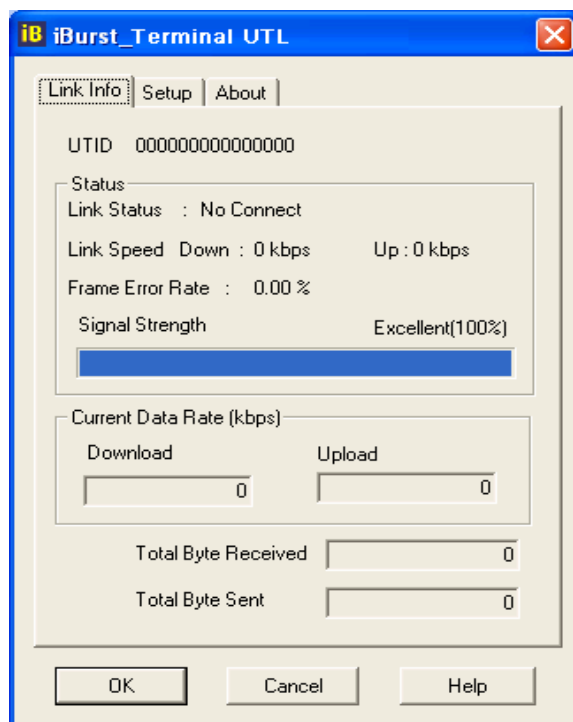
**This chapter describes the features and usage of the
Utility Software for iBurst Terminal.**

Using Utility Software

Using Utility Software for Windows

To open the utility dialog,

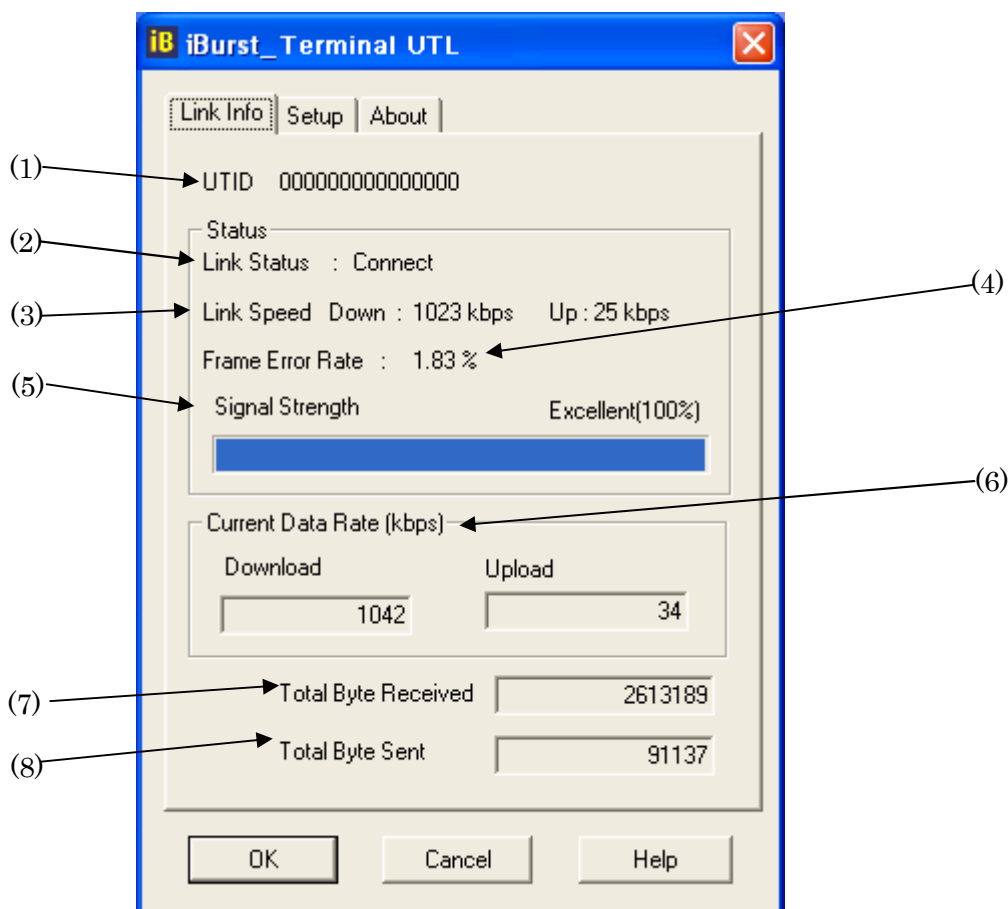
1. To open the utility dialog, click the icon  on the computer's task tray; or click [Start] -> [Programs] -> [iBurst Terminal] -> [iBurst_Terminal UTL]. When the dialog opens, the [Link Info] pane will be displayed as shown below.



2. To close the utility dialog window, click the [OK] button or the [Cancel] button or the 'X' button at upper-right corner of the dialog window.

Link Info Pane

[Link Info] pane indicates several communication status about iBurst Terminal.



The following descriptions are about each item on the pane.

(1) **UTID**

UTID is an identifier assigned to the iBurst Terminal. This will be used for maintenance support.

(2) **Link Status**

This indicates current link status between the iBurst Terminal and the access point.

Connect : The link is connected.

No Connect : The iBurst Terminal is connected with your PC but the link is not connected.

No iBurst Terminal : There is no iBurst Terminal connected with your PC.

(3) **Link Speed**

This indicates current bandwidth allocated automatically between the iBurst Terminal and a radio base station.

(4) **Frame Error Rate**

This indicates current Frame Error Rate on the downlink air.

(5) Signal Strength

This indicates current signal strength of the received radio signal. The signal bar indicates the level visually in percentage and the status words are categorized according to the percent level as follows.

No Signal :	0%
Poor :	In the range of 1 to 24%
Fair :	In the range of 25 to 49%
Good :	In the range of 50 to 74%
Excellent :	In the range of 75 to 100%

(6) Current Data Rate

This indicates current throughputs on both directions.

(7) Total Byte Received

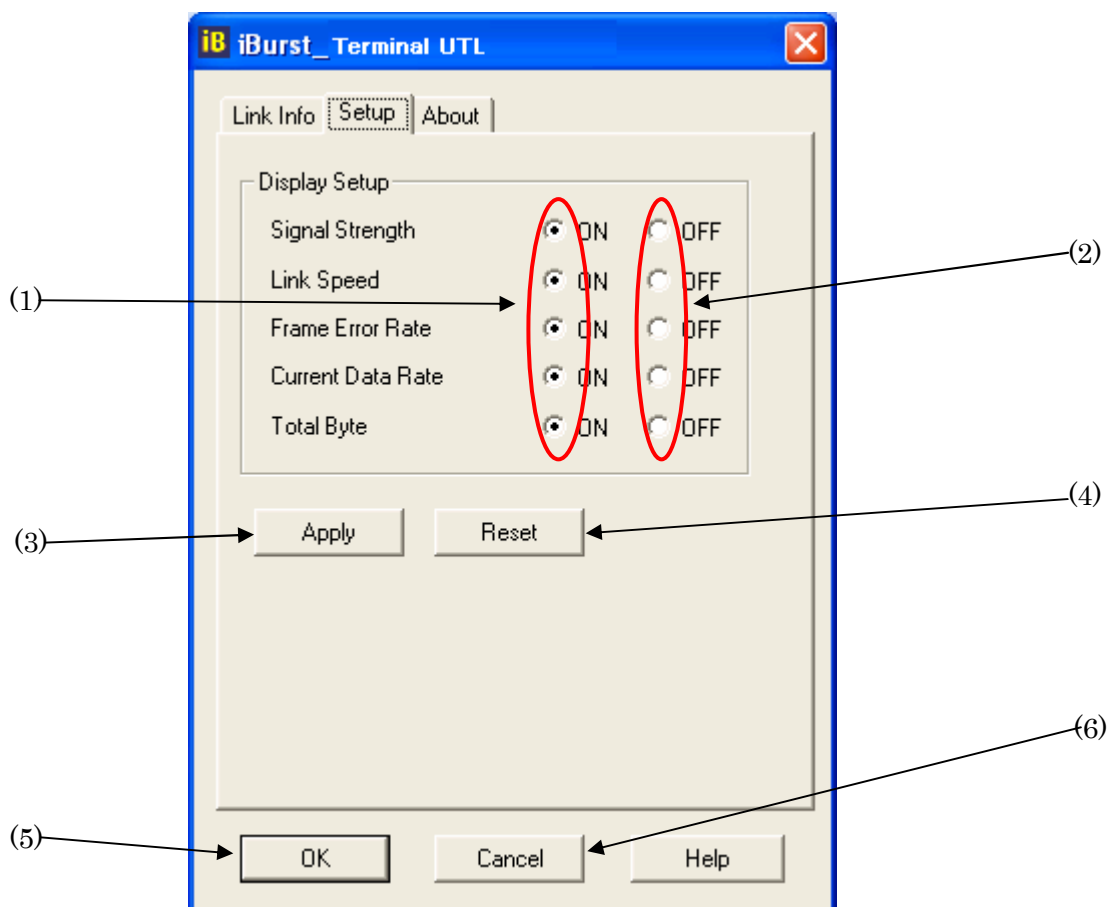
Total Byte Received indicates the total number of bytes received from the access point since the communication link is established.

(8) Total Byte Sent

Total Byte Sent indicates the total number of bytes transmitted to the access point since the communication link is established.

Setup Pane

[Setup] pane can be displayed in the main dialog window by clicking the [Setup] tab. This pane controls enabling/disabling to show each indicator on the [Link Info] pane.

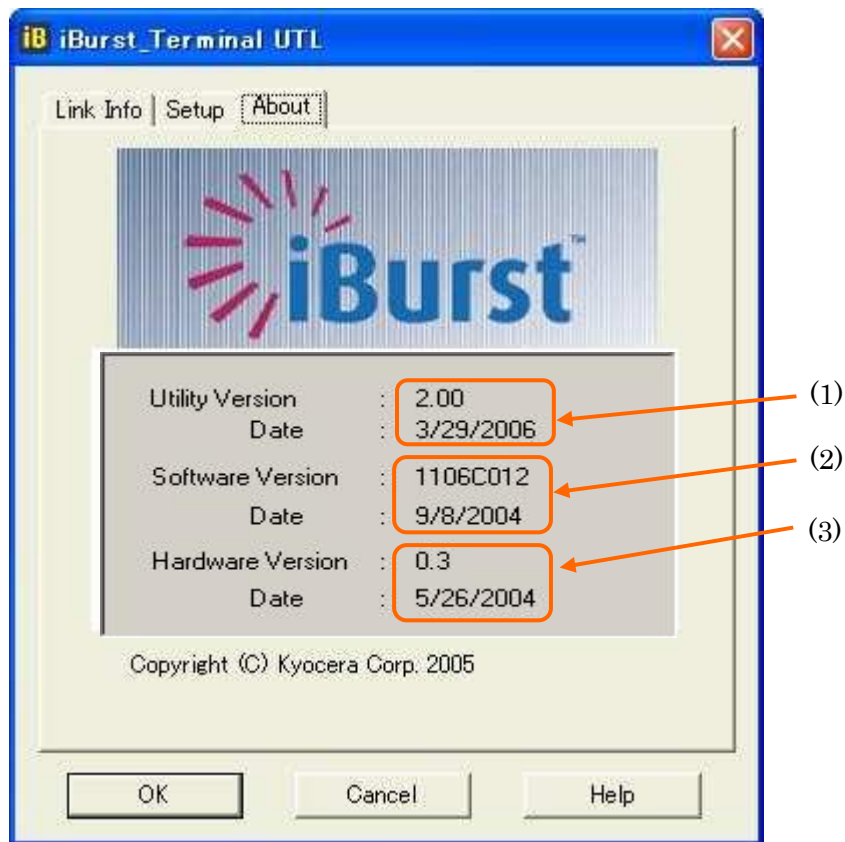


The following descriptions are about each item on the pane.

- (1) Selecting [ON] enables the corresponding indicator on the Link Info pane.
All are [ON] as the default.
- (2) Selecting [OFF] disables the corresponding indicator on the Link Info pane.
- (3) [Apply] button activates every setting above.
- (4) [Reset] button enables and activates all settings above.
- (5) [OK] button activates every setting above and close the dialog.
- (6) [Cancel] button closes the dialog without activation of the settings.

About Pane

[About] pane shows the version information about software, hardware and copyrights.








The following descriptions are about each item on the pane.

- (1) This shows the version number and the build date of this Utility Software.
- (2) This shows the firmware version and the build date of the iBurst Terminal.
- (3) This shows the hardware version and the manufactured date of the iBurst Terminal.

Icon Display in task tray

When the Utility Software for iBurst Terminal is running, an icon of the Utility Software will be displayed in the task tray of the computer monitor according to communication status of the iBurst Terminal.

The table below shows icons with status descriptions.

Icon	Status of iBurst Terminal
	iBurst Terminal is not connected with your PC.
	There is no transmission nor reception on iBurst Terminal.
	iBurst Terminal is transmitting data.
	iBurst Terminal is receiving data.
	iBurst Terminal is both transmitting and receiving data.

Pointing on the iBurst icon on the task tray, a baloon indicates **Link Status**, **Total Byte Received**, **Total Byte Sent** and **Signal Strength** as shown below, but depending on the settings on the [Setup] pane.



Using Utility Software for Mac OS X

To open the utility dialog,

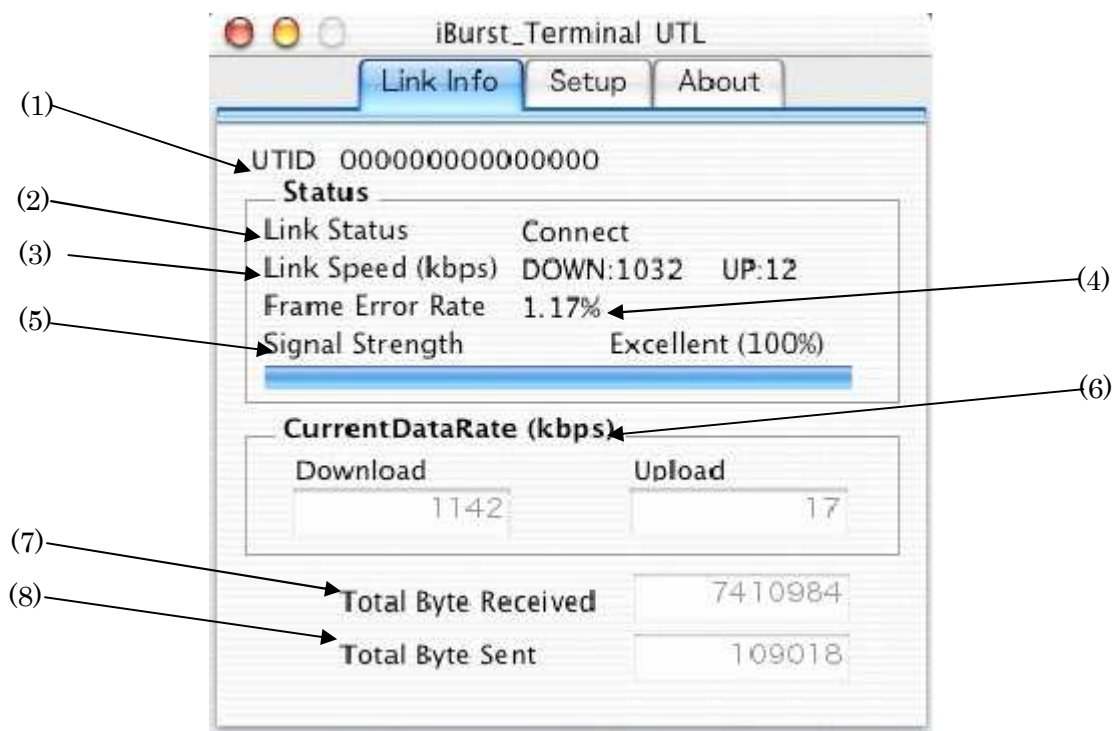
1. Click the iBurst Terminal UTL icon on the Dock.



2. The iBurst_Terminal UTL dialog appears as shown in next page.

Link Info Pane

[Link Info] pane indicates several communication statuses about iBurst Terminal.



The following descriptions are about each item on the pane.

(1) UTID

UTID is an identifier assigned to the iBurst Terminal. This will be used for maintenance support.

(2) Link Status

This indicates current link status between the iBurst Terminal and the access point.

Connect : The link is connected.

No Connect : The iBurst Terminal is connected with your PC but the link is not connected.

No iBurst Terminal : There is no iBurst Terminal connected with your PC.

(3) Link Speed

This indicates current bandwidth allocated automatically between the iBurst Terminal and a radio base station.

(4) Frame Error Rate

This indicates current Frame Error Rate on the downlink air.

(5) Signal Strength

This indicates current signal strength of the received radio signal. The signal bar indicates the level visually in percentage and the status words are categorized according to the percent level as follows.

No Signal :	0%
Poor :	In the range of 1 to 24%
Fair :	In the range of 25 to 49%
Good :	In the range of 50 to 74%
Excellent :	In the range of 75 to 100%

(6) Current Data Rate

This indicates current throughputs on both directions.

(7) Total Byte Received

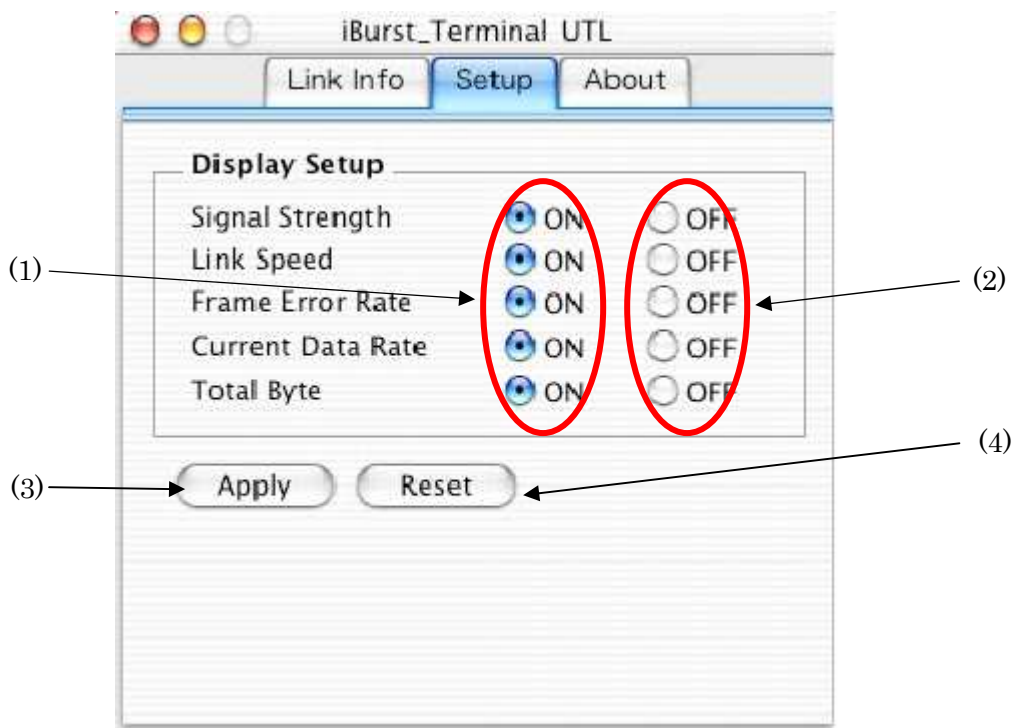
Total Byte Received indicates the total number of bytes received from the access point since the communication link is established.

(8) Total Byte Sent

Total Byte Sent indicates the total number of bytes transmitted to the access point since the communication link is established.

Setup Pane

[Setup] pane can be displayed in the main dialog window by clicking the [Setup] tab. This pane controls enabling/disabling to show each indicator on the [Link Info] pane.

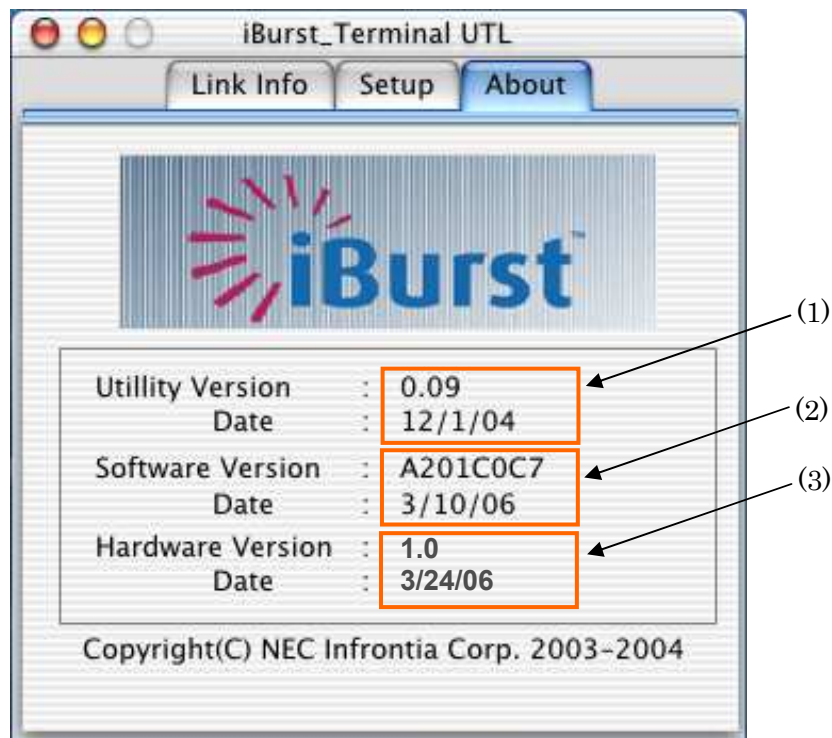


The following descriptions are about each item on the pane.

- (1) Selecting [ON] enables the corresponding indicator on the Link Info pane.
All are [ON] as the default.
- (2) Selecting [OFF] disables the corresponding indicator on the Link Info pane.
- (3) [Apply] button activates every setting above.
- (4) [Reset] button enables and activates all settings above.

About Pane

[About] pane shows the version information about software, hardware and copyrights.



The following descriptions are about each item on the pane.

- (1) This shows the version number and the build date of this Utility Software.
- (2) This shows the firmware version and the build date of the iBurst Terminal.
- (3) This shows the hardware version and the manufactured date of the iBurst Terminal.

Menu Bar

It will be displayed while the iBurst Terminal utility is active.



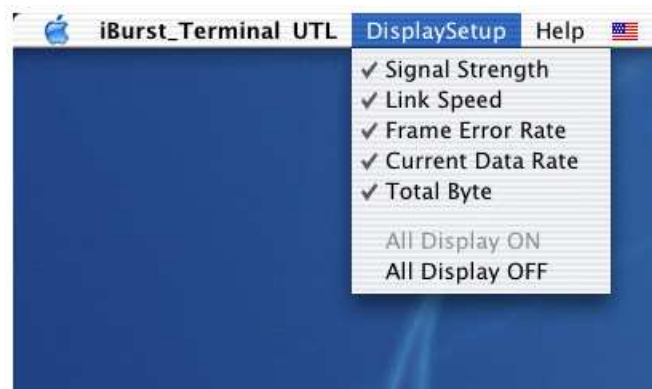
(1) iBurst_Terminal UTL menu

The menu is used to quit the iBurst Terminal utility or to perform other operations.



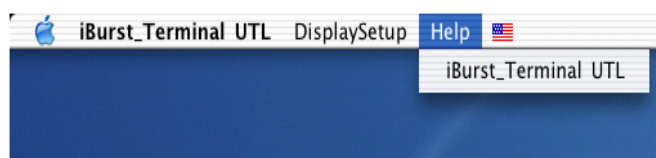
(2) DisplaySetup menu

The menu is used to control enabling/disabling to show each indication on the **[Link Info]** pane. The function is the same as the **[Setup]** pane of the dialog.



(3) Help menu







The **[Help]** window will appear when help menu is selected.



Icon Display on the Dock

When the Utility Software for iBurst Terminal is running, an icon of the Utility Software will be displayed in the task tray of the computer monitor according to communication status of the iBurst Terminal.

The table below shows icons with status descriptions.

Icon	Activities on iBurst Terminal
	iBurst Terminal is not connected with your PC.
	iBurst Terminal is connected with your PC, but No Signal received.
	iBurst Terminal is connected with your PC, and Signal Strength is Poor.
	iBurst Terminal is connected with your PC, and Signal Strength is Fair.
	iBurst Terminal is connected with your PC, and Signal Strength is Good.
	iBurst Terminal is connected with your PC, and Signal Strength is Excellent.

Status Indication over Ethernet

Introduction

In case that you want to make an IP connectivity through Ethernet, not through USB, you can see statuses of iBurst Terminal on a web browser instead of iBurst Utility software. In this case, you need to follow the steps described in this section.

Attention

Since the Ethernet port of an iBurst Terminal has a fixed IP address, 192.168.250.55 as default, it is strongly recommended to isolate both the iBurst Terminal and your PC from a live Ethernet network in order to avoid any network trouble.

Information

You can use a straight, not cross, cable to connect between the iBurst Terminal and your PC, it means that the Ethernet port of an iBurst Terminal has a interface like as a HUB.

Procedure

1. To enable communication with the iBurst Terminal, you have to change IP address of your PC.

<In case Windows XP>

- 1) Click "Start" -> "Control Panel" to open that.
- 2) Click "Network and Internet Connections" to open that.
- 3) Click "Network Connections" to open that.
- 4) Double click the name of the Ethernet port you want to use which should be listed at "LAN or High-Speed Internet".
- 5) "Local Area Connection Status" dialog will appear. On "General" tab in the dialog, click "Properties".
- 6) "Local Area Connection Properties" dialog will appear. On "General" tab in the dialog, select "Internet Protocol (TCP/IP)" and click "Properties" button. "Internet Protocol (TCP/IP) Properties" dialog will appear.
- 7) On "General" tab in the dialog, select "Use the following IP address:" and specify IP address and Subnet Mask according to network plan. In case of connecting directly between the iBurst Terminal and your PC, the settings shown below are recommended as an example.
IP address: 192.168.250.1
Subnet mask: 255.255.255.0
Default gateway: (blank)
- 8) Click "OK" to close the TCP/IP properties.
- 9) Click "OK" to close the connection properties.
- 10) Close "Network Connections" window.

<In case Windows 2000>

- 1) Click “Start” -> “Settings” -> “Control Panel” to open that.
- 2) Double click “Network and Dial-up Connections” to open that.
- 3) Double click the connection of the Ethernet port you want to use. In general case, the name should be “Local Area Connection”. A properties dialog will appear.
- 4) On “General” tab in the dialog, select “Internet Protocol (TCP/IP)” and click “Properties” button. “Internet Protocol (TCP/IP) Properties” dialog will appear.
- 5) On “General” tab in the dialog, select “Use the following IP address:” and specify IP address and Subnet Mask according to your network plan. In case of connecting directly between the iBurst Terminal and your PC, the settings shown below are recommended as an example.

IP address: 192.168.250.1

Subnet mask: 255.255.255.0

Default gateway:(blank)

- 6) Click “OK” to close the TCP/IP properties.
- 7) Click “OK” to close the Ethernet Connection properties.
- 8) Close “Network and Dial-up Connections” window.

<In case Windows Me/98SE>

- 1) Click “Start” -> “Settings” -> “Control Panel” to open that.
- 2) Double click “Network” to open that.
- 3) On “Configuration” tab in the dialog, select “TCP/IP -> [the name of the network adapter/card]” and click “Properties” button. “TCP/IP Properties” dialog will appear.
- 4) On “IP Address” tab in the dialog, select “Specify an IP address:” and specify IP address and Subnet Mask according to your network plan. In case of connecting directly between the iBurst Terminal and your PC, the settings shown below are recommended as an example.

IP address: 192.168.250.1

Subnet mask: 255.255.255.0

Default gateway:(blank)

- 5) Click “OK” to close the TCP/IP properties.
- 6) Click “OK” to close “Network” dialog.

<In case Mac OS X>

- 1) Click “System Preferences” on the dock or click the APPLE icon on the top menu and click “System Preferences...” to open that.
- 2) Click “Network” icon to open that.
- 3) At the pull-down menu of “Show:”, select the Ethernet port you want to use. In general case, the name should be “Built-in Ethernet”.
- 4) Select “PPPoE” tab on the dialog and disable “Connect using PPPoE”.
- 5) Select “TCP/IP” tab on the dialog.
- 6) At the pull-down menu of “Configure:”, select “Manually”.
- 7) Specify IP address and Subnet Mask according to your network plan. In case of connecting directly between the iBurst Terminal and your PC, the settings shown below are recommended as an example.

IP address: 192.168.250.1

Subnet mask: 255.255.255.0

Router: (blank)

- 8) Click “Apply Now” button.
- 9) Close “Network” window.

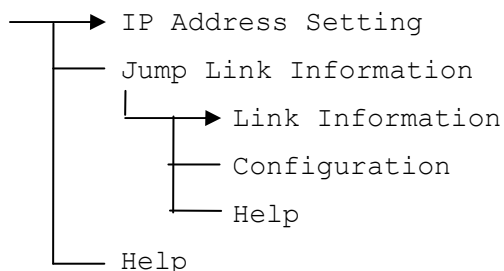
2. Open a web browser, e.g. Internet Explorer.

3. Specify a URL as follows.

http://192.168.250.55/

NOTE: Even though you change IP address of the iBurst Terminal, the iBurst Terminal hold the default IP address. So, the default IP address cannot be used for the other equipment in the network connected. The URL will jump automatically to the IP address you changed.

4. Now, you are seeing information in the iBurst Terminal. The structure of the information pages is as follows.



[IP Address Setting]



iBurst
iBurst Configuration Utility

Menu

- [IP Address Setting](#)
- [Jump Link Information](#)
- [Help](#)

IP Address Setting

Current IP Address is 192.168.250.80

Enter New IP Address (dotted decimal format):

192.168.250.80

Submit

This page shows current IP address of the iBurst Terminal. You can change the IP address on this page. To change it, type new IP address and click “Submit” button. The page shown below will be shown.



iBurst
iBurst Configuration Utility

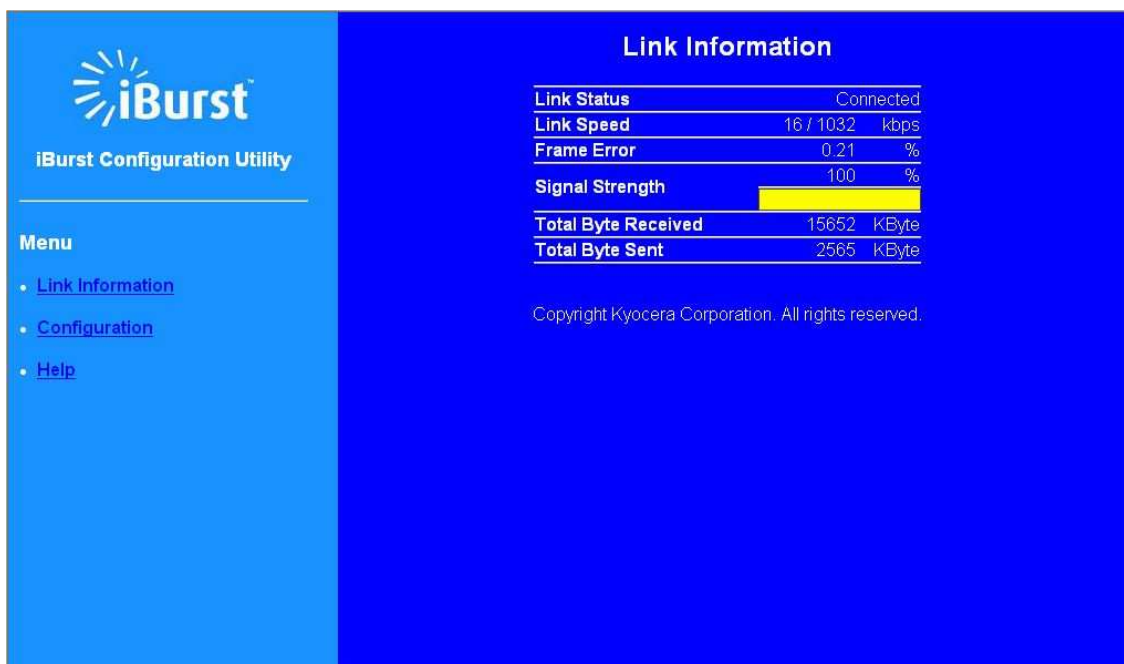
Menu

- [IP Address Setting](#)
- [Jump Link Information](#)
- [Help](#)

IP Address Setting

New IP Address Set To: 192.168.250.200 -- COMPLETION

[Link Information]



The screenshot shows the iBurst Configuration Utility interface. On the left is a blue sidebar with the iBurst logo and the text "iBurst Configuration Utility". Below this is a "Menu" section with three links: "Link Information" (highlighted in blue), "Configuration", and "Help". The main area has a dark blue background with the title "Link Information" at the top. Below the title is a table of link statistics:

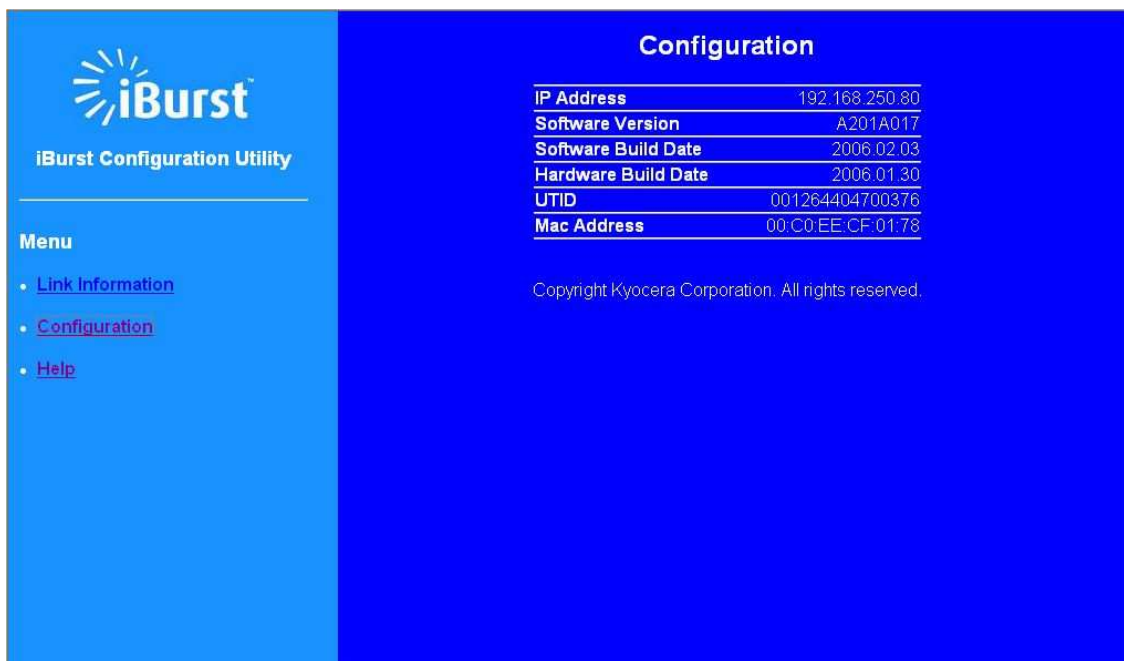
Link Status	Connected
Link Speed	16 / 1032 kbps
Frame Error	0.21 %
Signal Strength	100 %
Total Byte Received	15652 KByte
Total Byte Sent	2565 KByte

Below the table, it says "Copyright Kyocera Corporation. All rights reserved."

This page indicates similar information described in page 75 of iBurst Terminal utility software.

** All information will be updated every 5 seconds.

[Configuration]



The screenshot shows the iBurst Configuration Utility interface. On the left is a blue sidebar with the iBurst logo and the text "iBurst Configuration Utility". Below this is a "Menu" section with three links: "Link Information", "Configuration" (highlighted in blue), and "Help". The main area has a dark blue background with the title "Configuration" at the top. Below the title is a table of system information:

IP Address	192.168.250.80
Software Version	A201A017
Software Build Date	2006.02.03
Hardware Build Date	2006.01.30
UTID	001264404700376
Mac Address	00:C0:EE:CF:01:78

Below the table, it says "Copyright Kyocera Corporation. All rights reserved."

This page indicates similar information described in page 78 of iBurst Terminal utility software.

[Help]

This navigates you to see the web pages.

Chapter 4

MTU Optimizer Software & Network Property

This chapter describes the features and usage of the MTU Optimizer Software for iBurst Terminal.

MTU Optimizer Software & Network Property

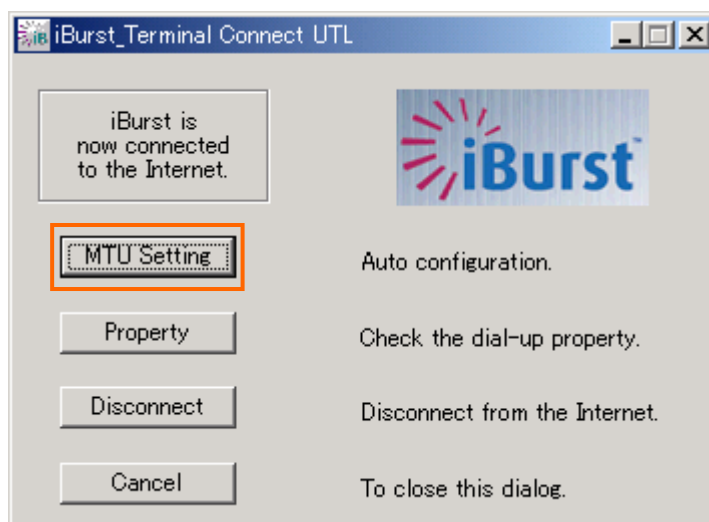
MTU optimizer software measures the optimized packet size between your PC and a HOST. It is recommended to tune MTU size in order to avoid any throughput problem. This function is a part of Kyocera PPPoE dialer and it is available on Windows 98SE, ME and 2000.

NOTE: You need to make a Internet connection through the iBurst Terminal prior to start this procedure.

1. While your PC is being connected to the Internet through the iBurst Terminal, double click the iBurst connection utility icon.

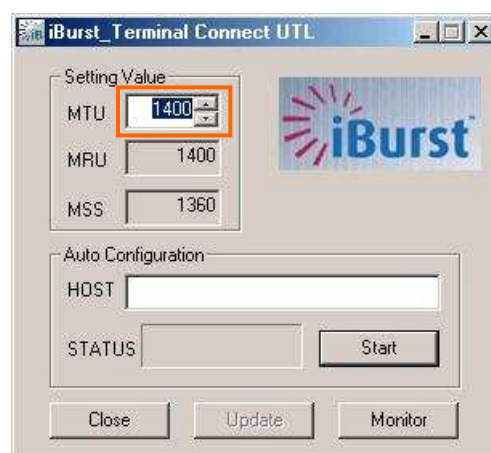


2. When the dialog will appear, click the [MTU Setting] button.



NOTE: 'Property' to open properties of the dial-up connection for iBurst Terminal.
'Disconnect' to disconnect from the Internet.
'Cancel' to close the dialog.

3. The [MTU Setting] dialog is as follows.



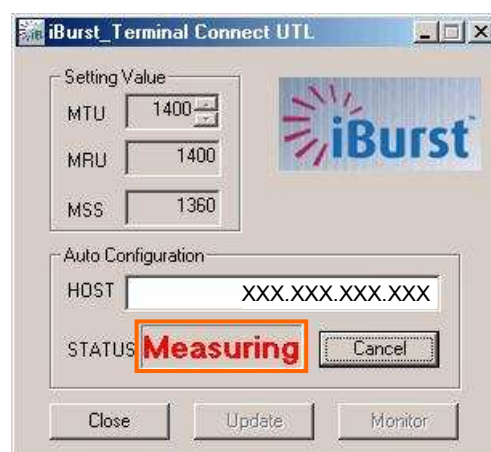
4. There are 2 methods to decide MTU size, i.e. manually or automatically.

5. If you want to change MTU size manually, type a value in the MTU field and click the [Update] button. Your PC may request to restart it.

6. If you want to optimize MTU size automatically,

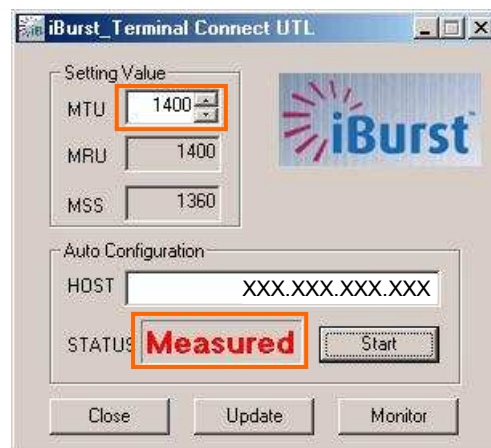
A) type a target URL or an IP address of the HOST, which will be notified by the network operator, and click the [Start] button.

B) The optimizer starts measuring and every value will be varied automatically.

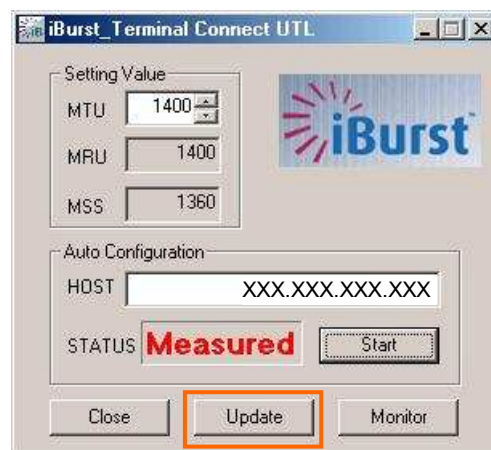


NOTE: 'Cancel' to stop measuring.

- C) The optimizer will finish automatically with a result of the optimized MTU size in the MTU field.



- D) Click the [Update] button to memorize into your PC. Your PC may request to restart it.



NOTE: 'Monitor' to revoke the result and show the current memorized MTU size.

7. Click [Close] to close the dialog.
8. If you updated, you need to restart your PC to take effect.

Chapter 5

Uninstallation

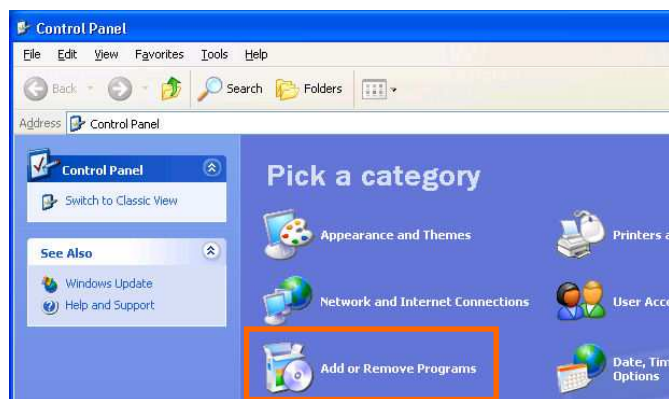
This chapter describes how to uninstall iBurst software.

iBurst Software Uninstallation

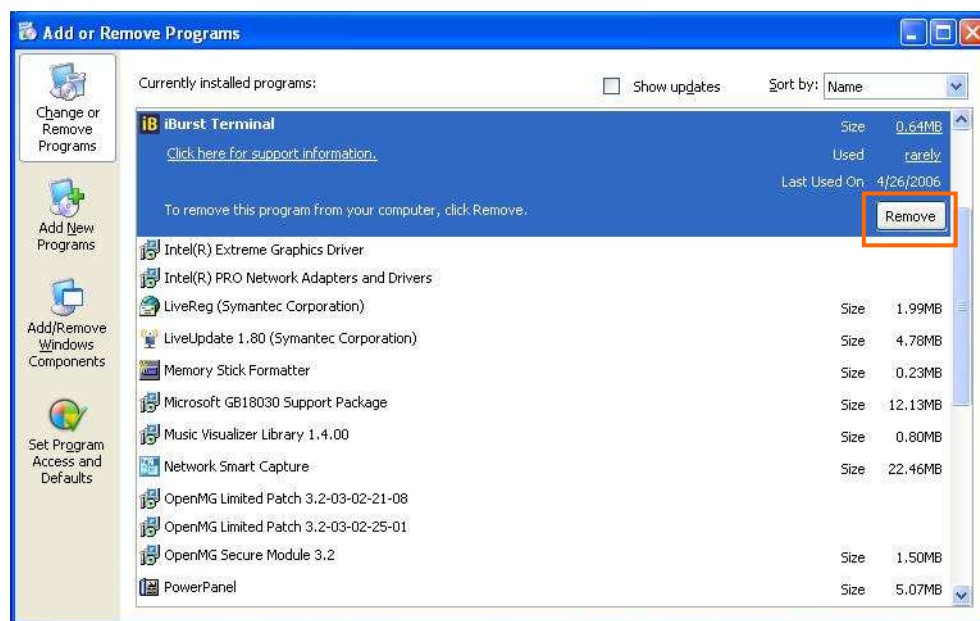
Uninstallation for Windows XP/2000

NOTE: All screen copies in this section are examples on Windows XP.

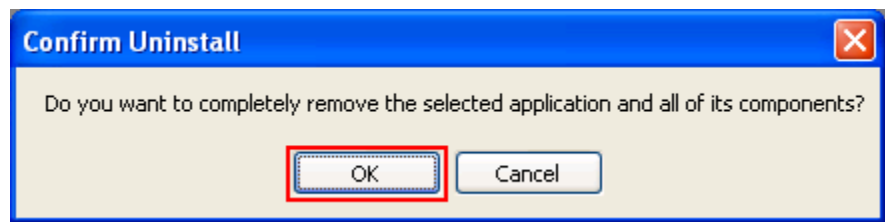
1. Close all programs that are currently running.
2. Disconnect the iBurst Terminal with your PC.
3. Click the [Start] button, followed by selecting [Control Panel] to open Control Panel, and then double click [Add or Remove Programs].



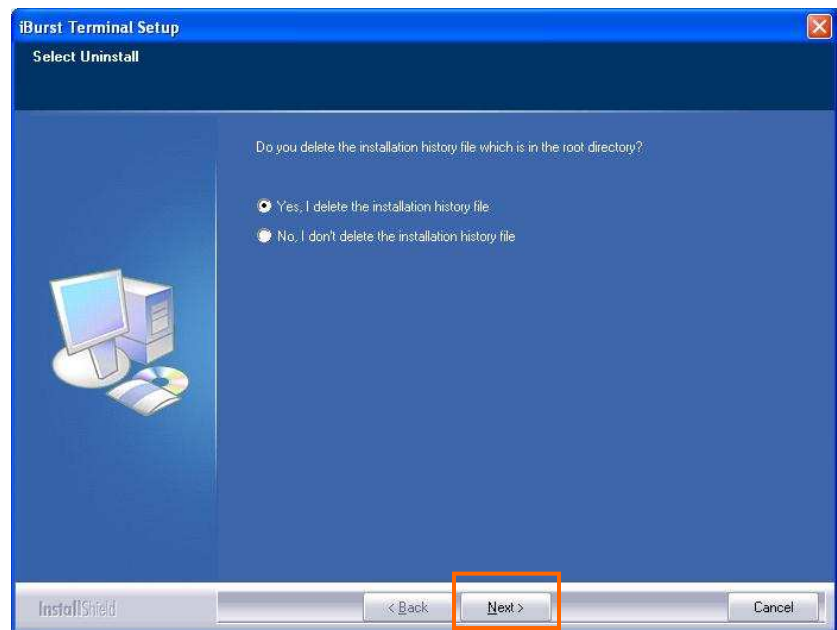
4. Select [iBurst Terminal] software, and click the [Remove] button.



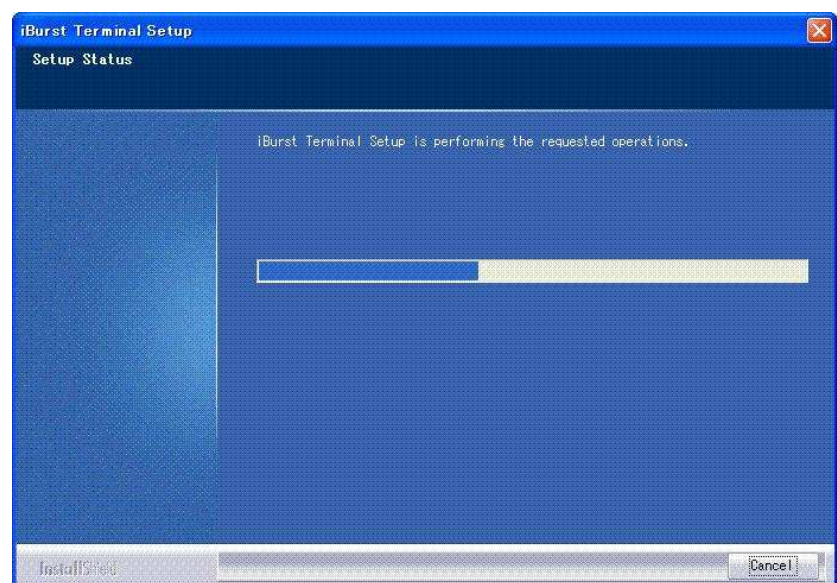
5. Click the [OK] button after appearing dialog window as shown below.



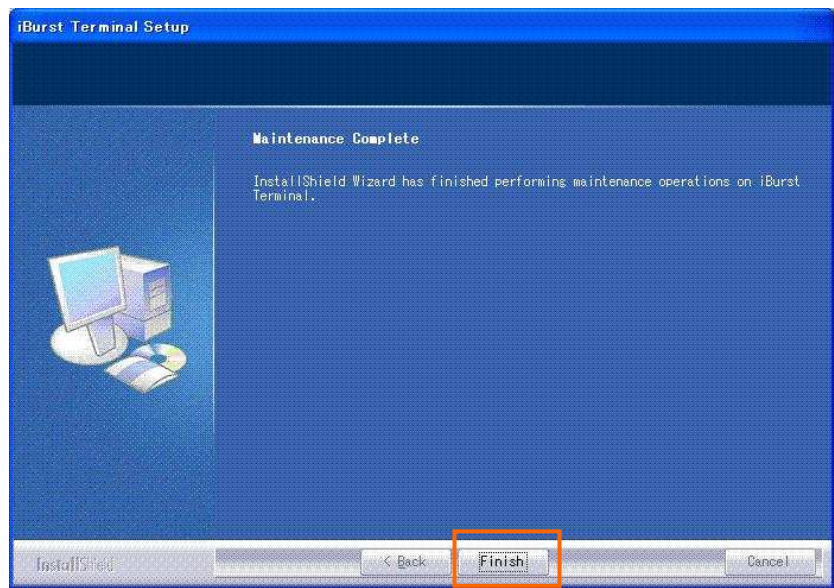
6. The following dialog window will appear, and select to delete or not to delete installation history files before uninstallation, then click the [Next >] button. Selecting "Yes" is recommended.



7. The following dialog window will appear, and uninstallation of software begins.

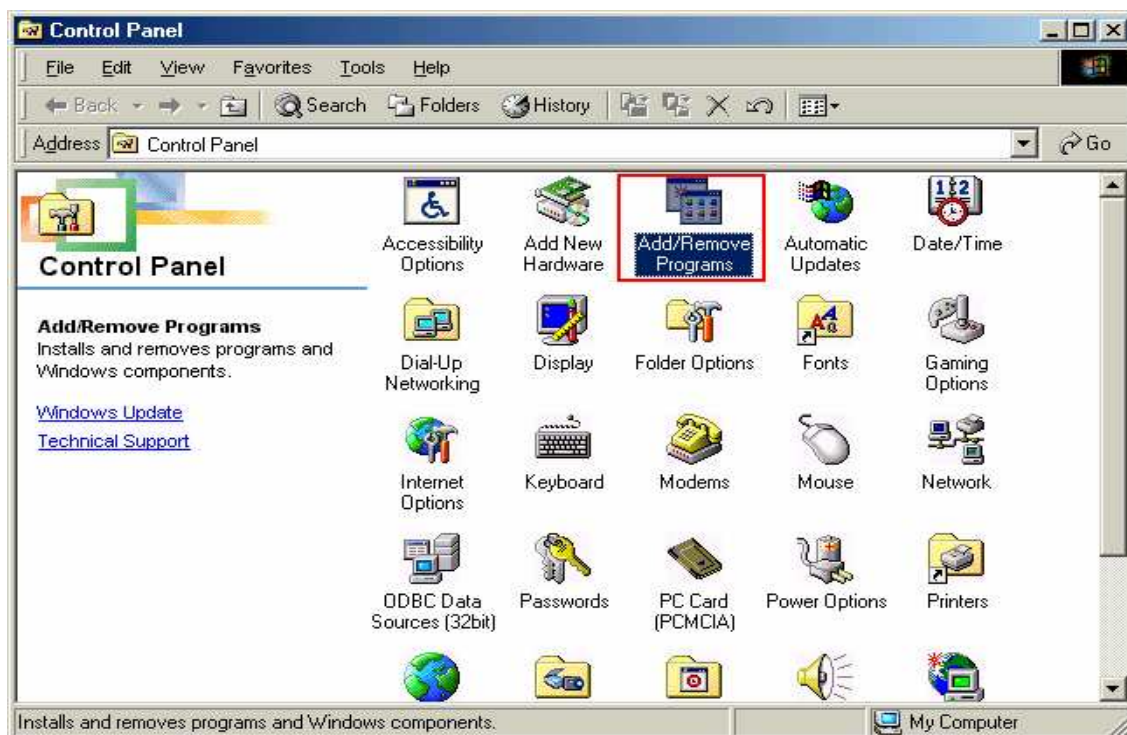


8. Click the **[Finish]** button after appearing dialog window as shown below.

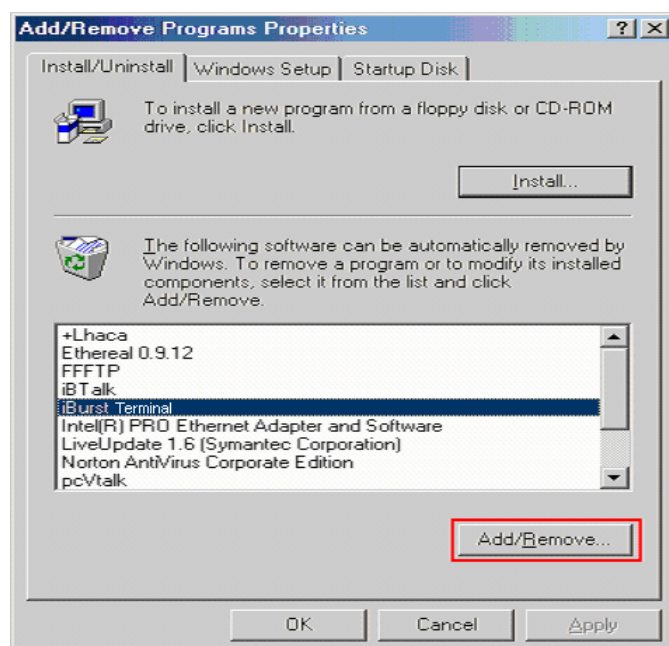


Uninstallation for Windows Me/98SE

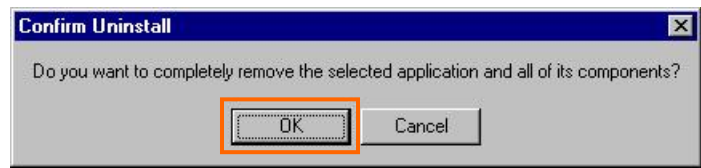
1. Close all programs that are currently running.
2. Disconnect the iBurst Terminal with your PC.
3. Click the [Start] -> [Settings] -> [Control Panel] to open Control Panel as shown below, and then double click [Add/Remove Programs].



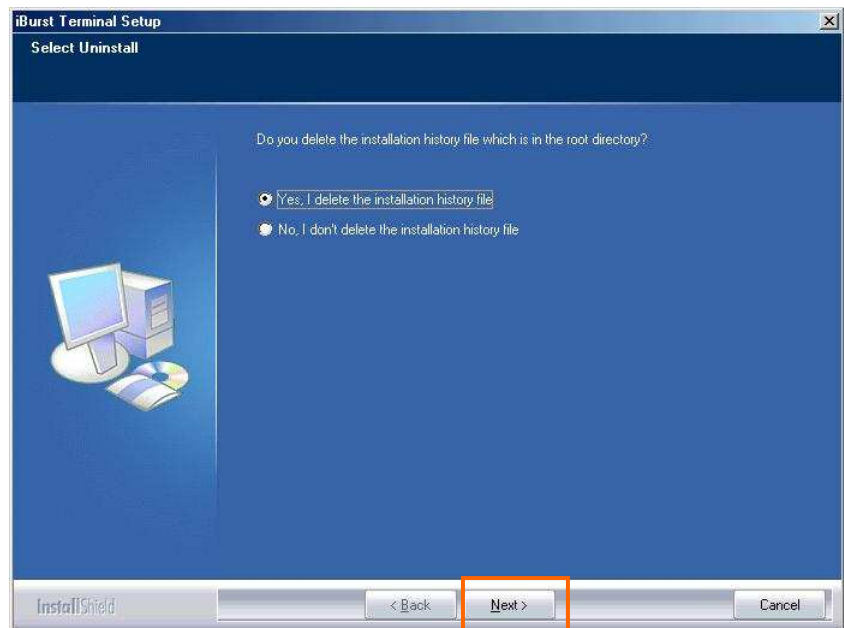
4. Select [iBurst Terminal] software, and click the [Add/Remove] button.



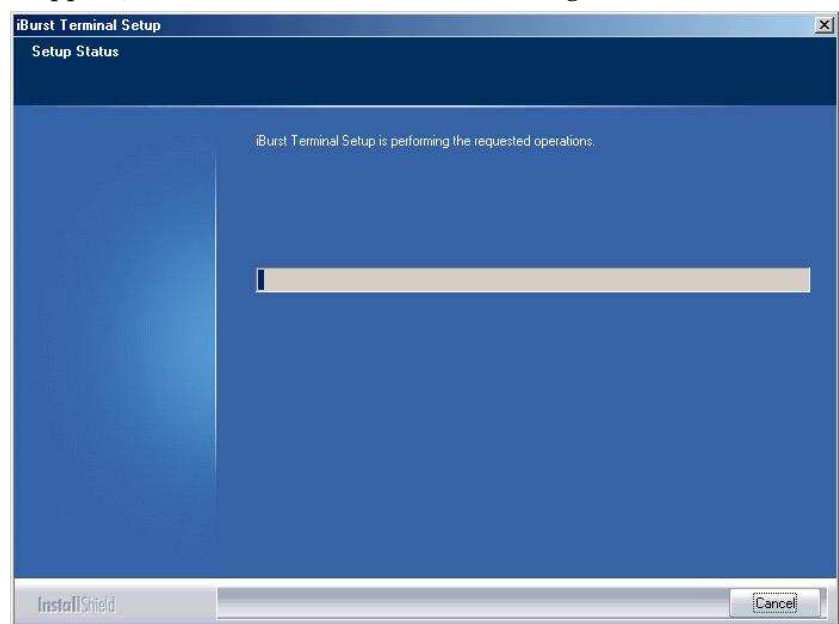
5. Click the **[OK]** button when appearing the message as shown below.



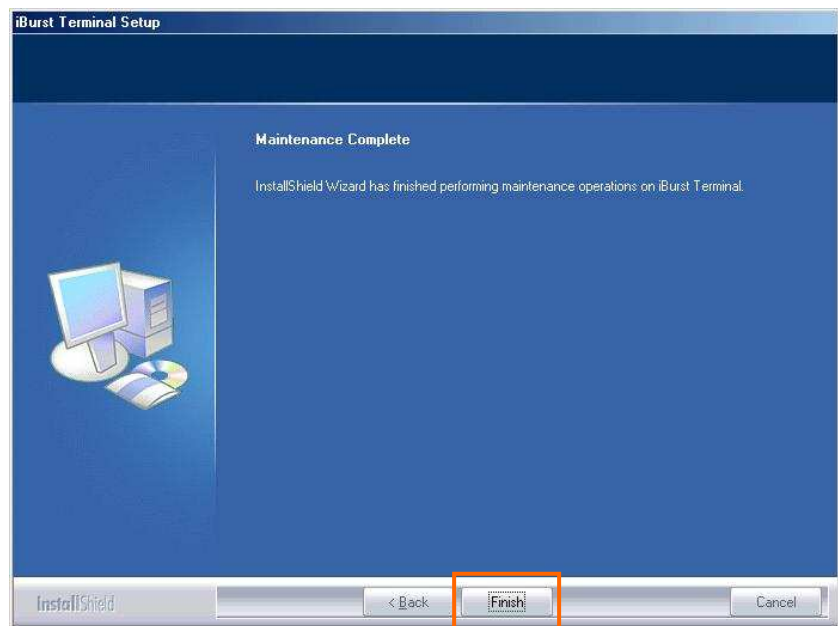
6. The following dialog window will appear, and select to delete or not to delete installation history files before uninstallation, then click the **[Next >]** button. Selecting "Yes" is recommended.



7. The following dialog window will appear, and uninstallation of software begins.

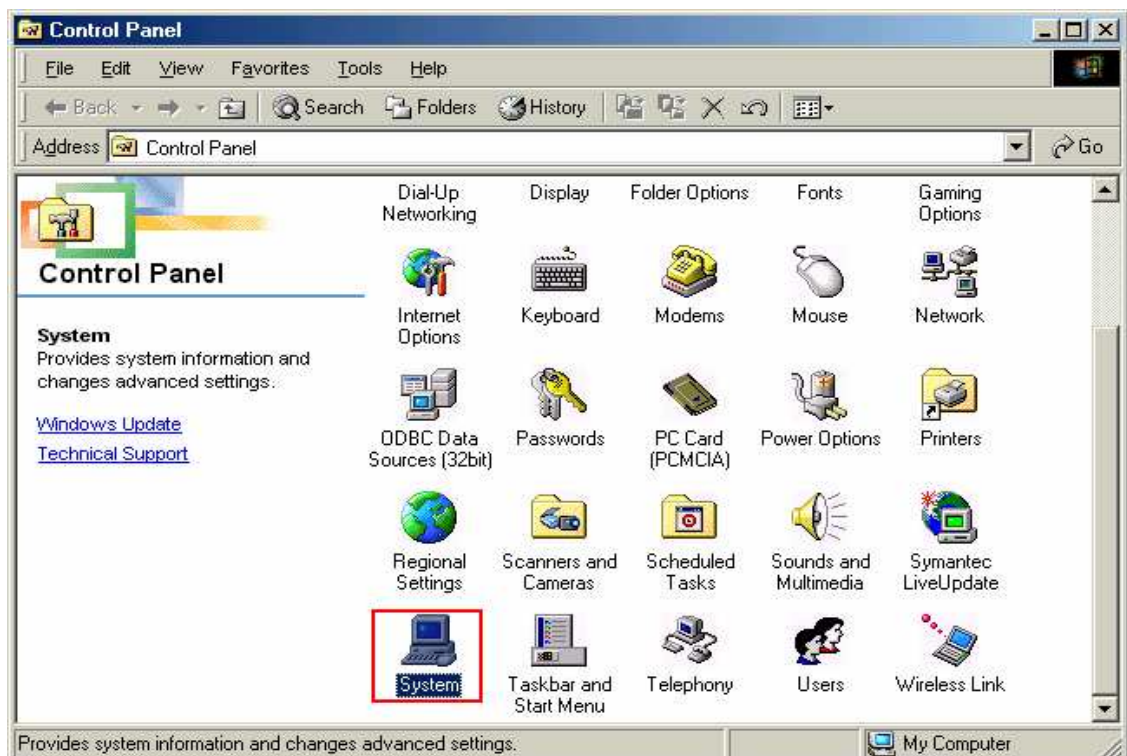


8. Click the **[Finish]** button after appearing dialog window as shown below.

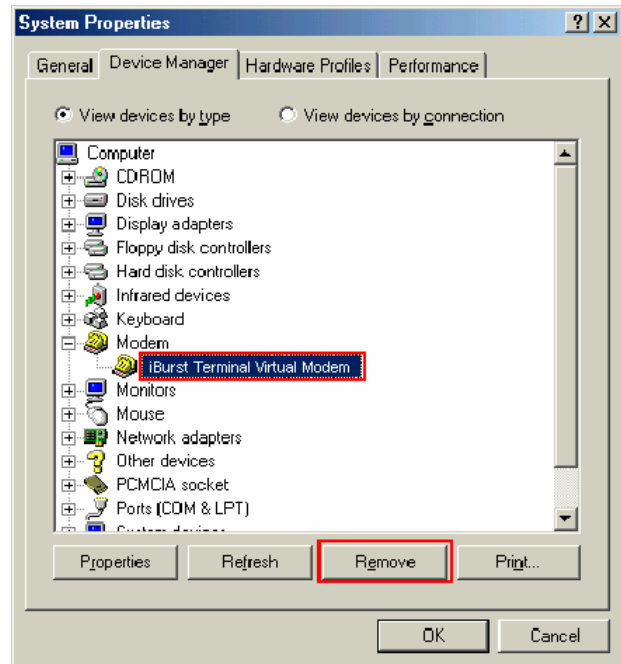


NOTE: In case that the uninstaller shows a selection of restarting your PC, it is recommended to restart it.

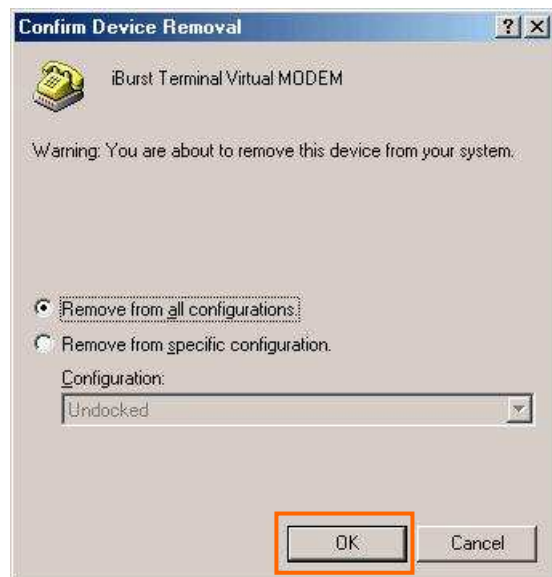
9. Click the **[Start]** -> **[Settings]** -> **[Control Panel]** to open Control Panel as shown below, and then double click **[System]**.



10. Select [iBurst Terminal Virtual MODEM] on [Device Manager] tab, then click the [Remove] button.



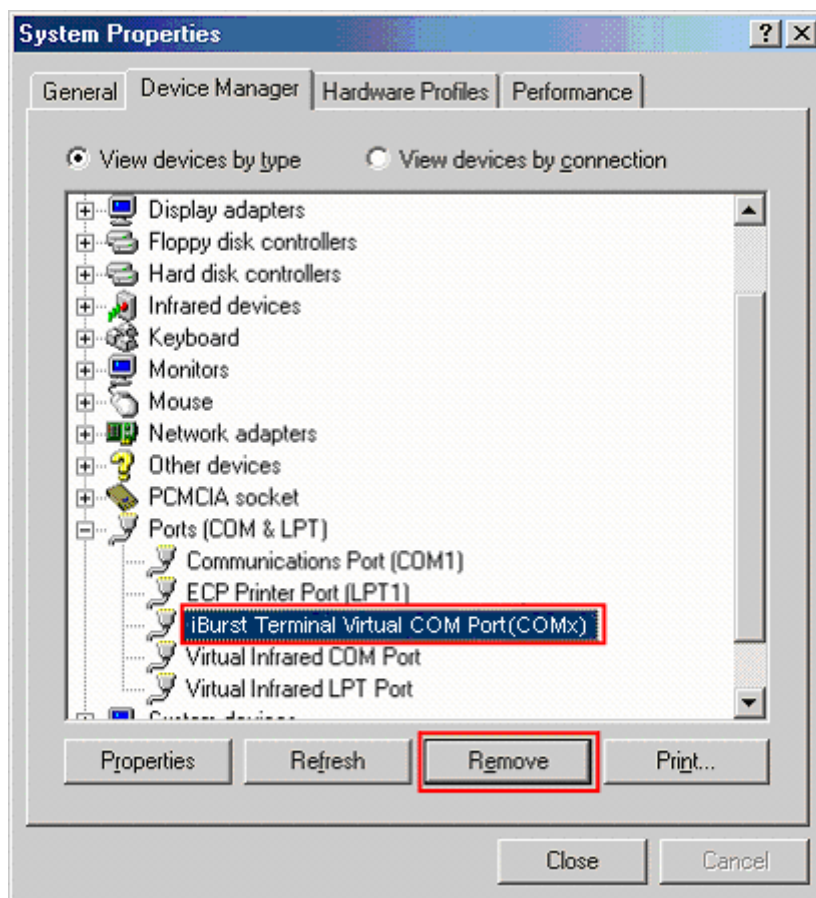
11. Click the [OK] button.



NOTE: In case Windows 98 SE, no selection is on the dialog.

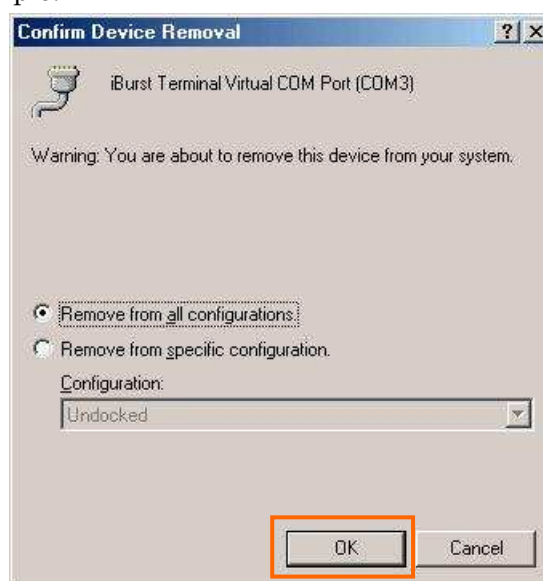
12. Select [iBurst Terminal Virtual COM Port(COMx)] on [Device Manager] tab, then click the [Remove] button.

NOTE: The 'X' in "COM x" above is a COM port number assigned automatically.



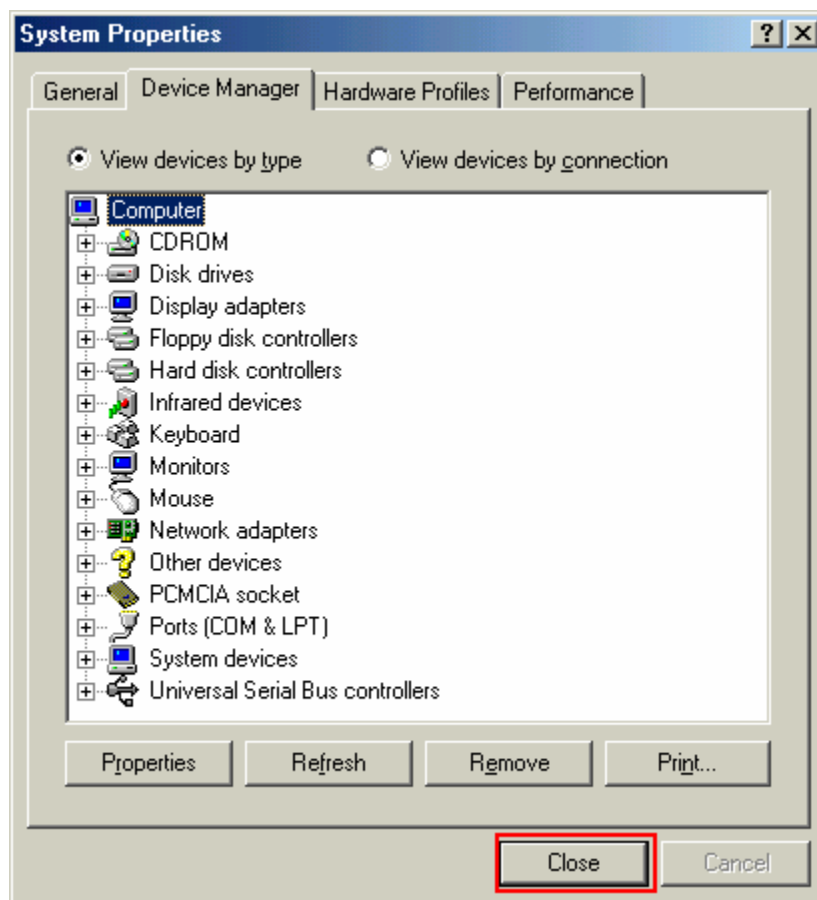
13. Click the [OK] button.

NOTE: "COM3" in the picture below is an example.

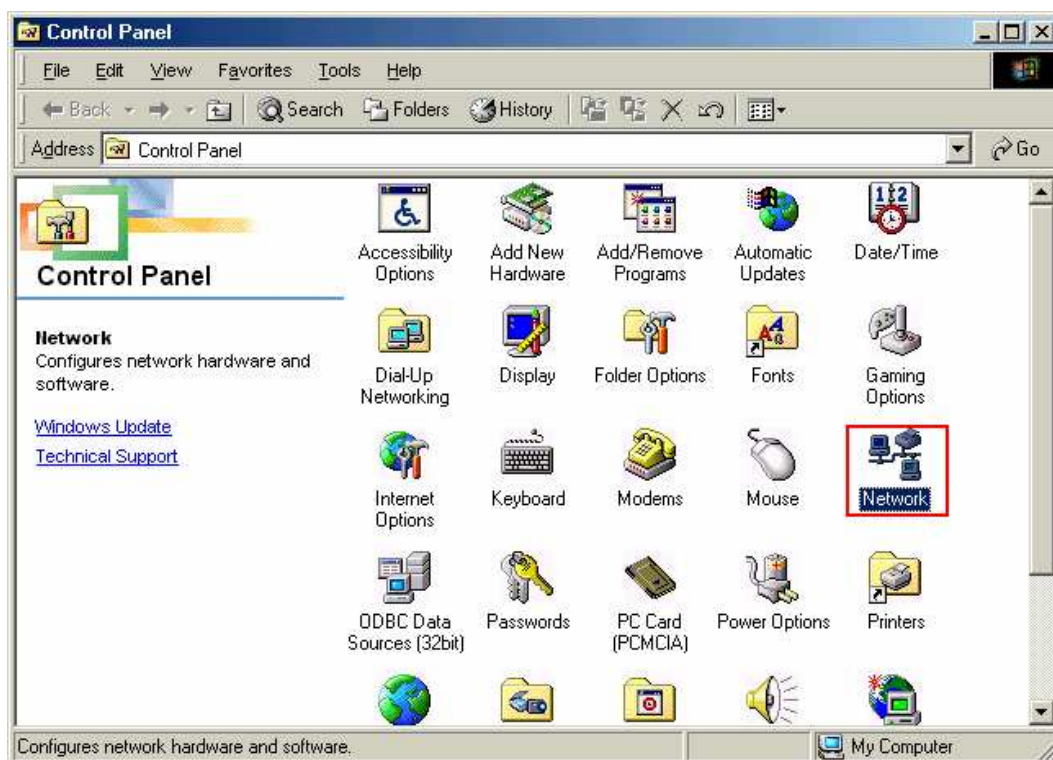


NOTE: In case Windows 98 SE, no selection is on the dialog.

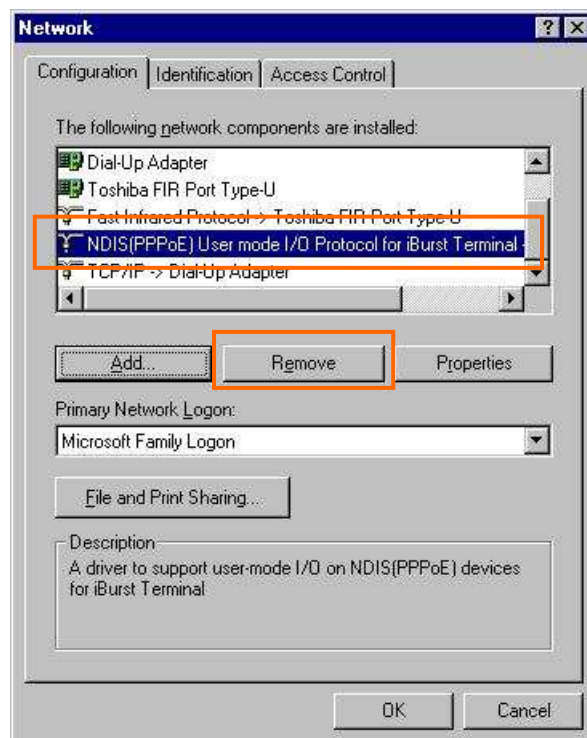
14. Click the [Close] button.



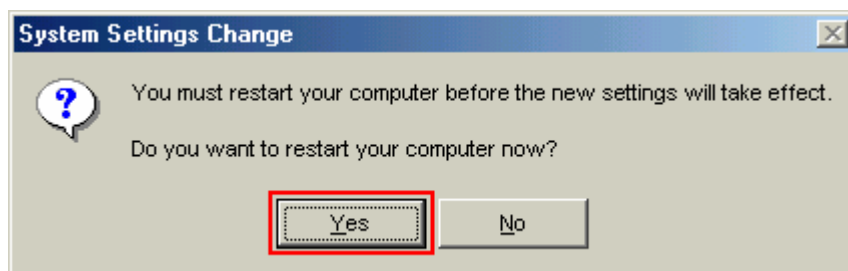
15. Click the [Start] -> [Settings] -> [Control Panel] to open Control Panel as shown below, and then double click [Network].



16. Select [NDIS(PPPoE)Usermode I/O Protocol for iBurst Terminal-> xxxxxx] on [Configuration] tab, then click the [Remove] button.(Repeat the above steps if the other [NDIS(PPPoE)Usermode I/O Protocol for iBurst Terminal] components are installed.)



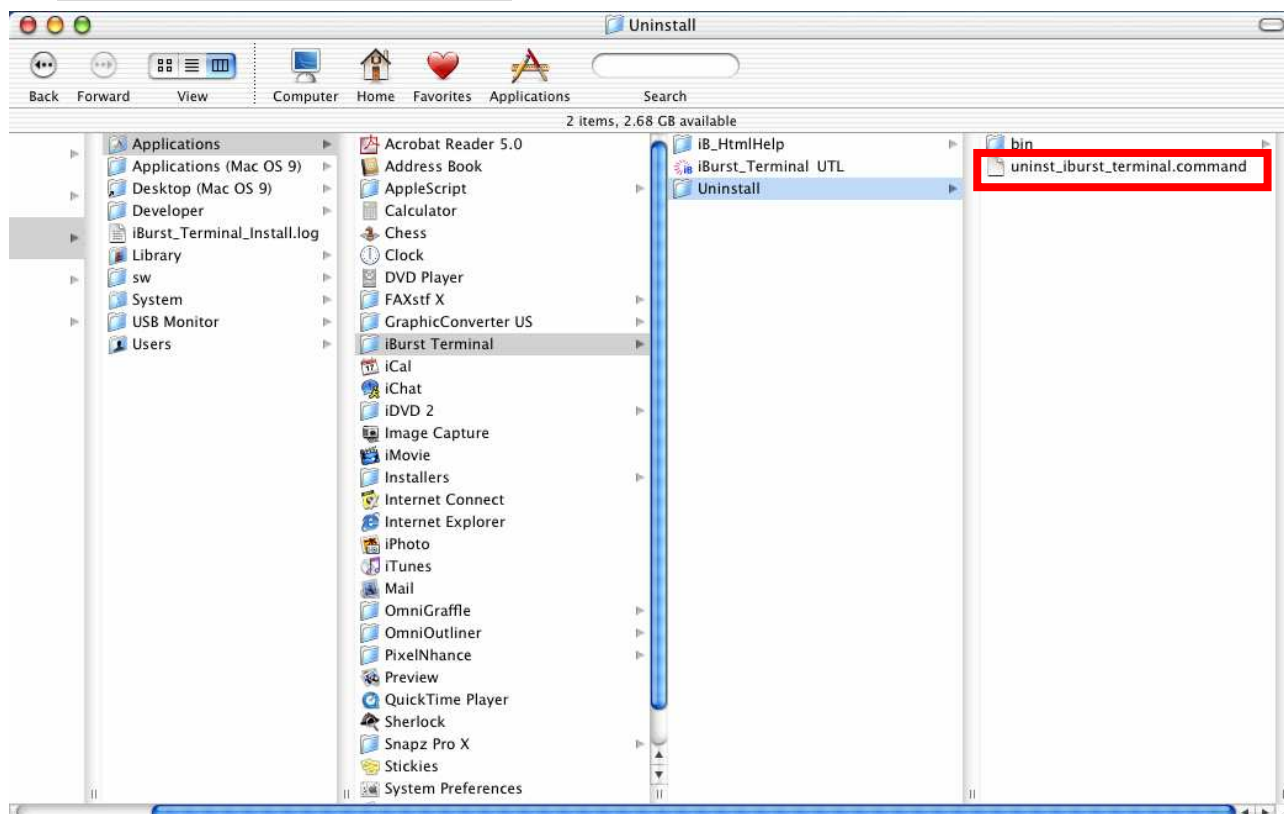
17. Click the [OK] button to close Network dialog.
18. The dialog window shown below will appear, click the [Yes] button, and restart your PC.



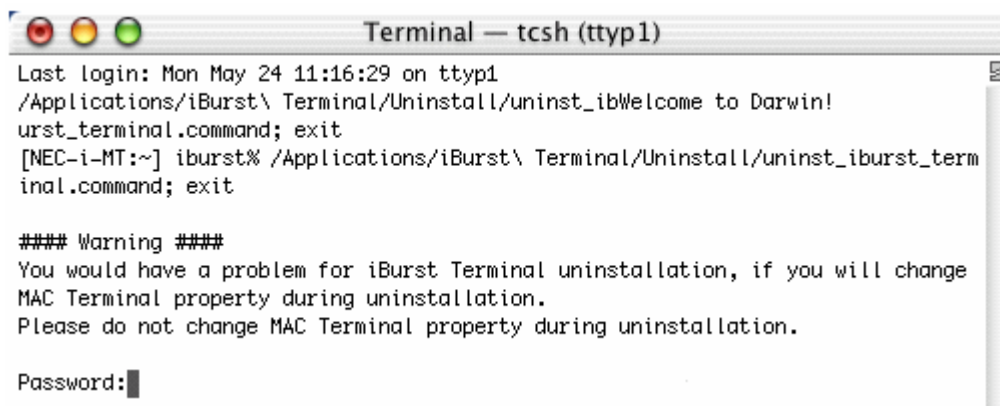
NOTE: If the PC doesn't shutdown itself, try to press Alt+Ctrl+Del keys several times.

Uninstallation for Mac OS X

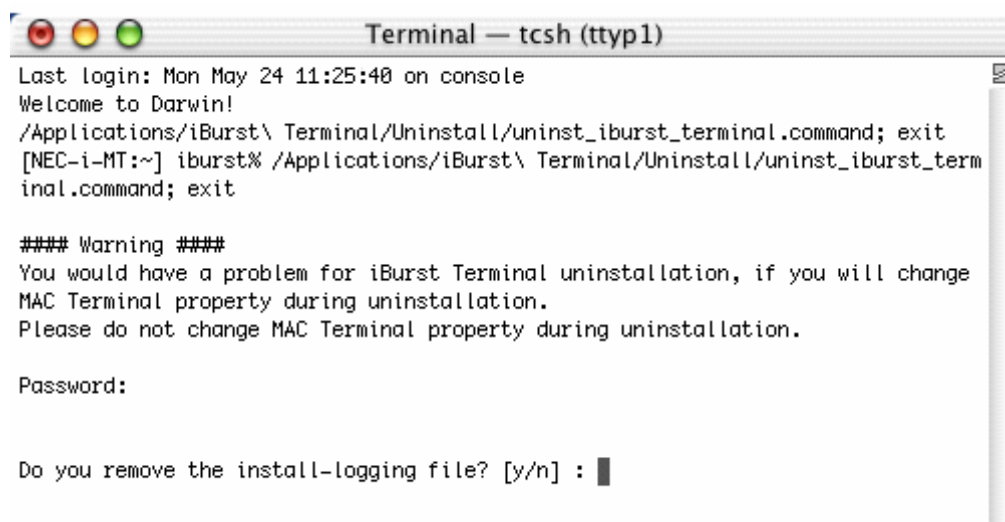
1. Close all programs that are currently running.
2. Disconnect the iBurst Terminal with your PC.
3. Open the folder [Applications\iBurst Terminal\Uninstall], then double click the script file [uninst_iburst_terminal.command].



4. The terminal window shown below will appear, Type administrator's [password] and press [Enter] key.



5. Press [y] or [n] key, and Press [Enter] key.



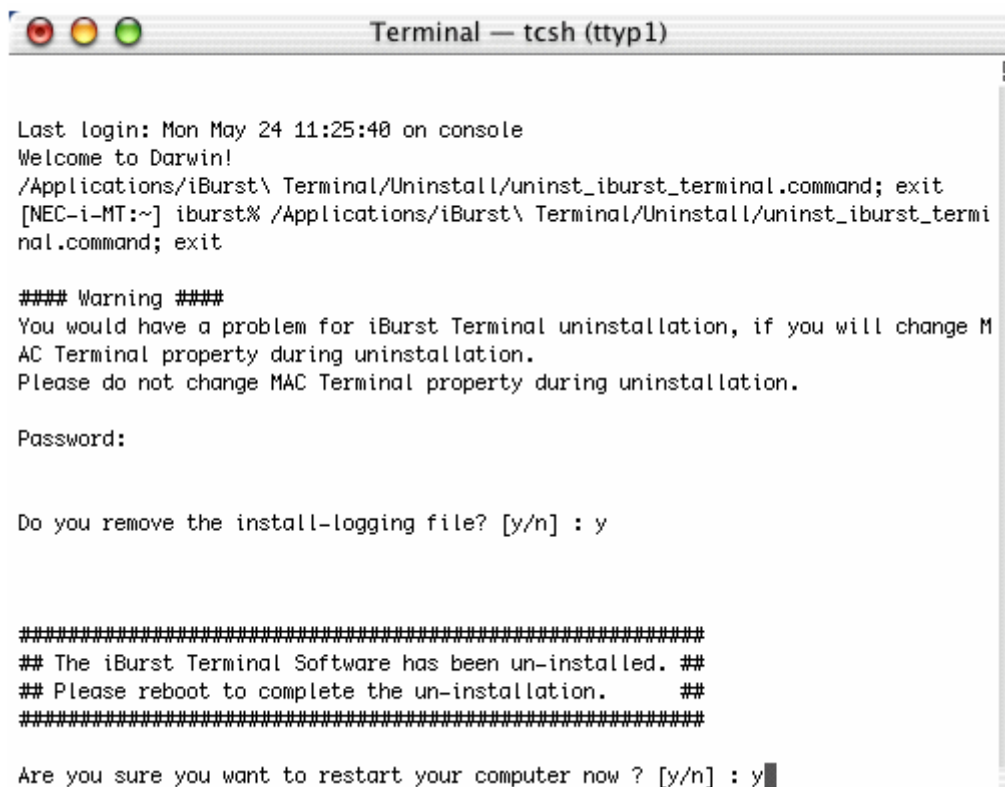
```
Terminal — tcsh (tty1)
Last login: Mon May 24 11:25:40 on console
Welcome to Darwin!
/Applications/iBurst\ Terminal/Uninstall/uninst_iburst_terminal.command; exit
[NEC-i-MT:~] iburst% /Applications/iBurst\ Terminal/Uninstall/uninst_iburst_term
inal.command; exit

#### Warning ####
You would have a problem for iBurst Terminal uninstallation, if you will change
MAC Terminal property during uninstallation.
Please do not change MAC Terminal property during uninstallation.

Password:

Do you remove the install-logging file? [y/n] : 
```

6. Press [y] and [Enter] key to restart your computer.



```
Terminal — tcsh (tty1)

Last login: Mon May 24 11:25:40 on console
Welcome to Darwin!
/Applications/iBurst\ Terminal/Uninstall/uninst_iburst_terminal.command; exit
[NEC-i-MT:~] iburst% /Applications/iBurst\ Terminal/Uninstall/uninst_iburst_termi
nal.command; exit

#### Warning ####
You would have a problem for iBurst Terminal uninstallation, if you will change M
AC Terminal property during uninstallation.
Please do not change MAC Terminal property during uninstallation.

Password:

Do you remove the install-logging file? [y/n] : y

#####
## The iBurst Terminal Software has been un-installed. ##
## Please reboot to complete the un-installation.      ##
#####

Are you sure you want to restart your computer now ? [y/n] : y
```

ATTENTION : Don't change any properties of MAC Terminal while uninstallation. Otherwise you would have a problem on uninstalling of iBurst Terminal software.

Chapter 6

Trouble shooting

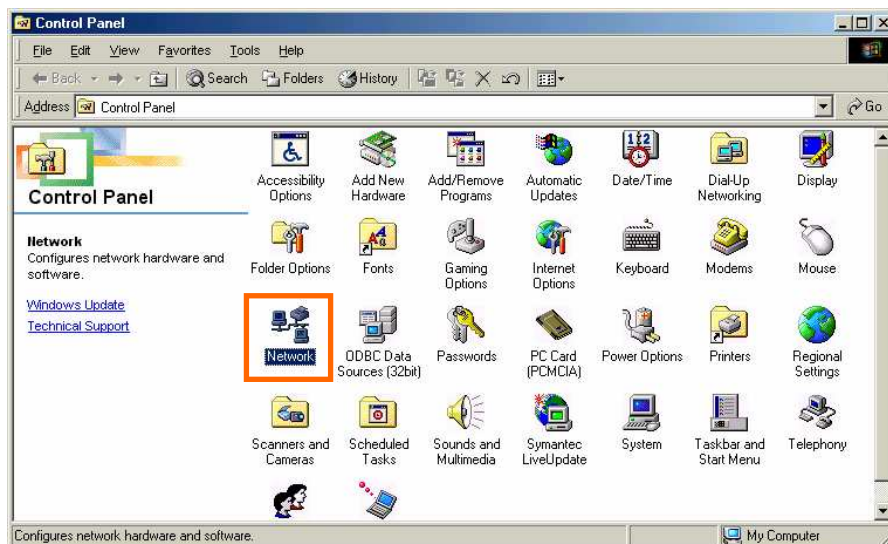
**This chapter describes how to solve the trouble
when you use iBurst.**

Windows

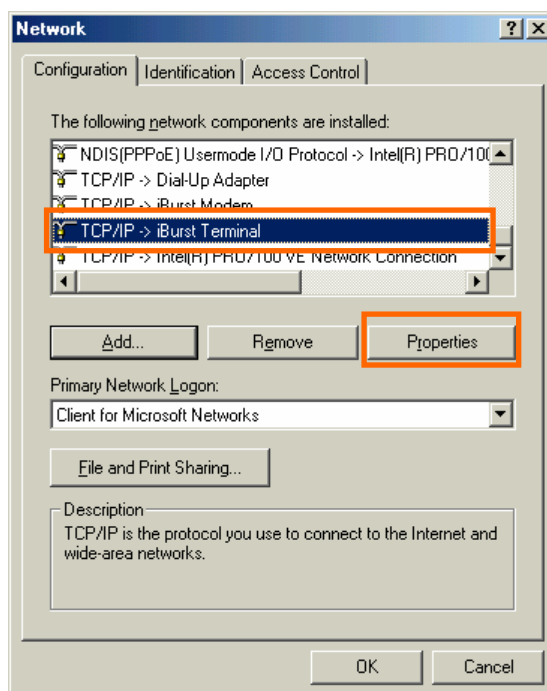
USB connection with Windows Me/98SE

Windows Me/98SE may need a couple seconds or maximally 1 minute to detect iBurst Terminal through USB connection. If you find this phenomenon, you can avoid it by following procedure.

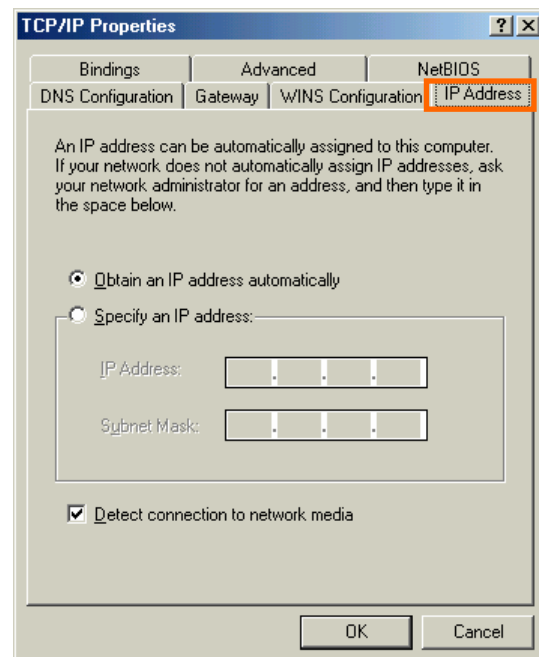
1. Open Network property [Start] -> [Settings] -> [Control Panel] -> [Network].



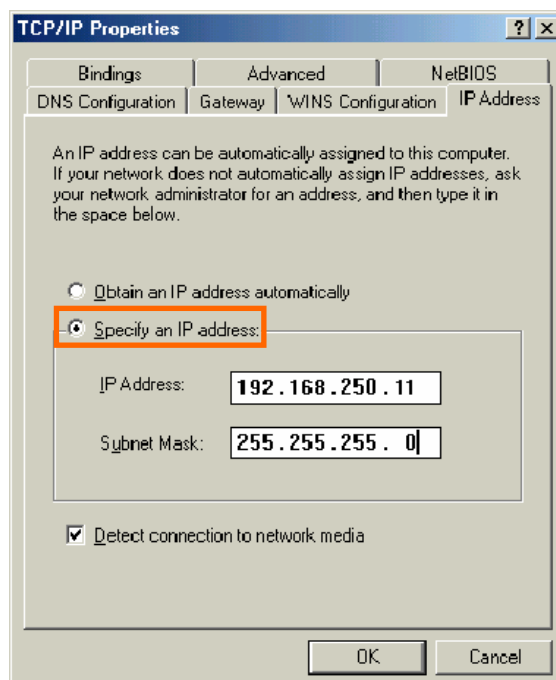
2. Select the [TCP/IP->iBurst Terminal] component, then click the [Properties] button.



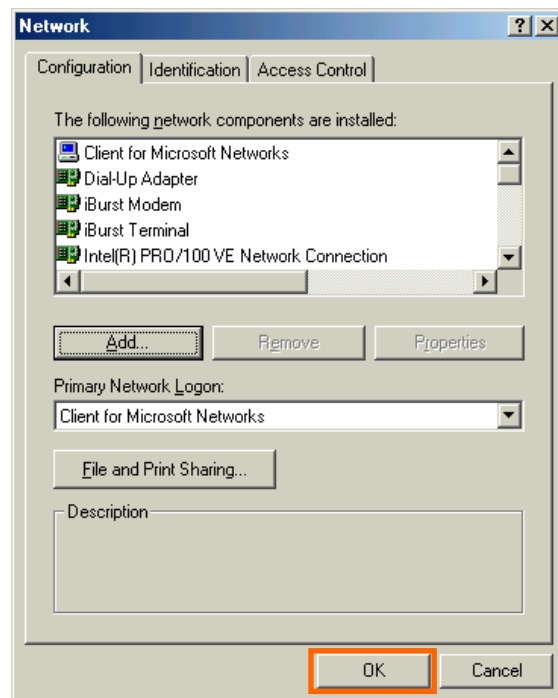
3. Open the **[IP Address]** tab.



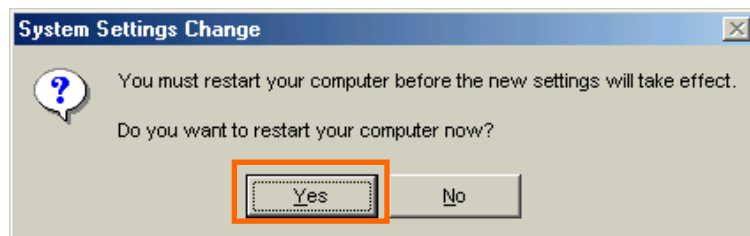
4. Select the **[Specify an IP address]** then type a private IP address (for example: 192.168.250.11) and type 255.255.255.0 on Subnet Mask.



5. Click the **[OK]** button.



6. Click the **[Yes]** button, and restart your PC.



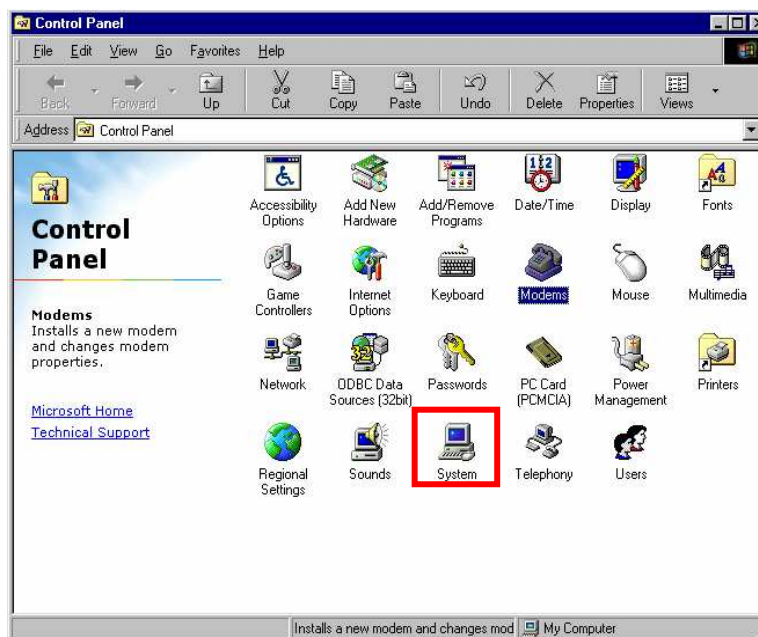
Illegal hang-up when install iBurst Terminal.

Windows 98SE may need a couple minutes to shutdown itself, or may hang-up in worst case after iBurst Terminal device driver installation.

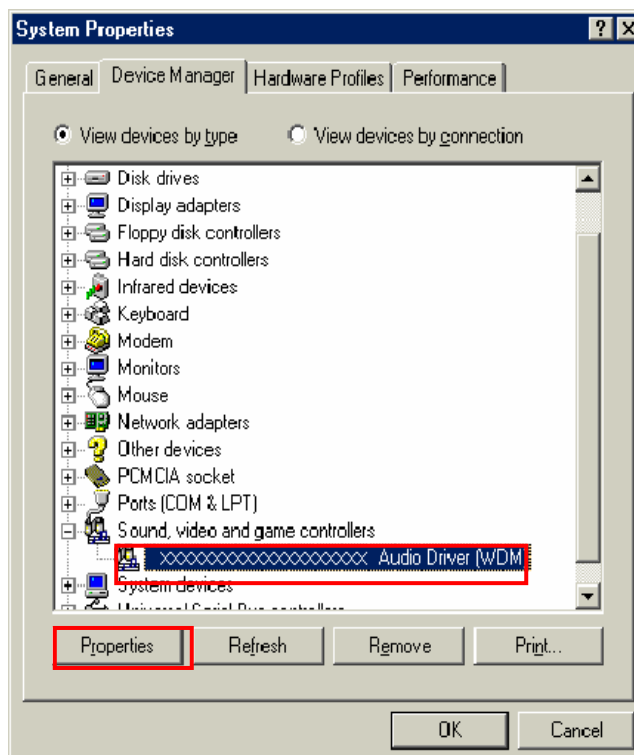
This case is from Windows OS and competition with other devices.

The following gives you the procedure to fix this problem.

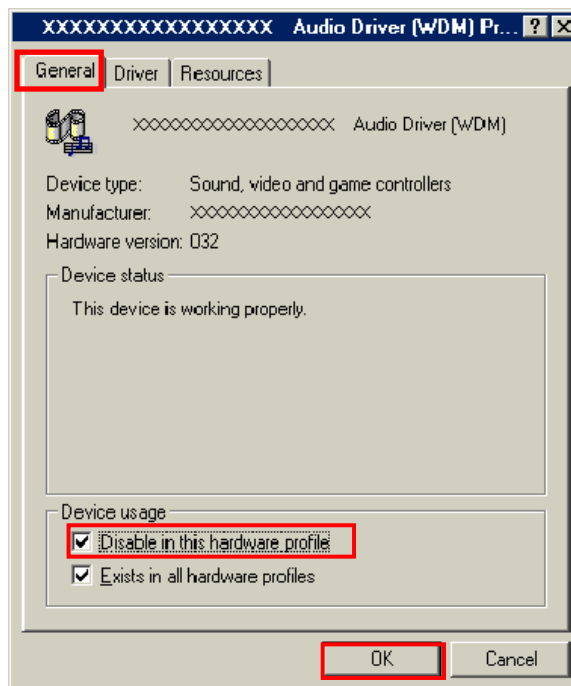
1. Open Network property [Start] -> [Settings] -> [Control Panel] -> [System].



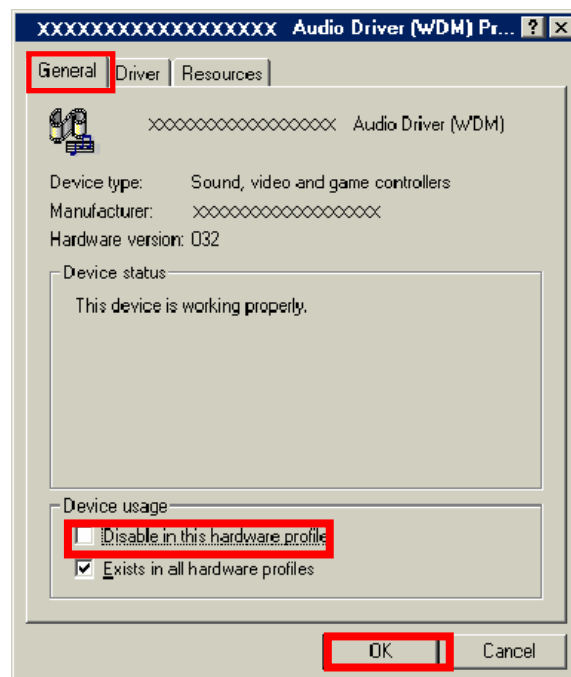
2. Select [Device Manager] tab. Disable sound card device and other which will not effect for Windows performance, i.e. network card and modem.



3. On the [General] tab, check the box labeled the [Disable in this hardware profile], and then click the [OK] button.



4. Connect iBurst Terminal to USB port.
5. On the [General] tab, uncheck the box labeled the [Disable in this hardware profile], and then click the [OK] button.



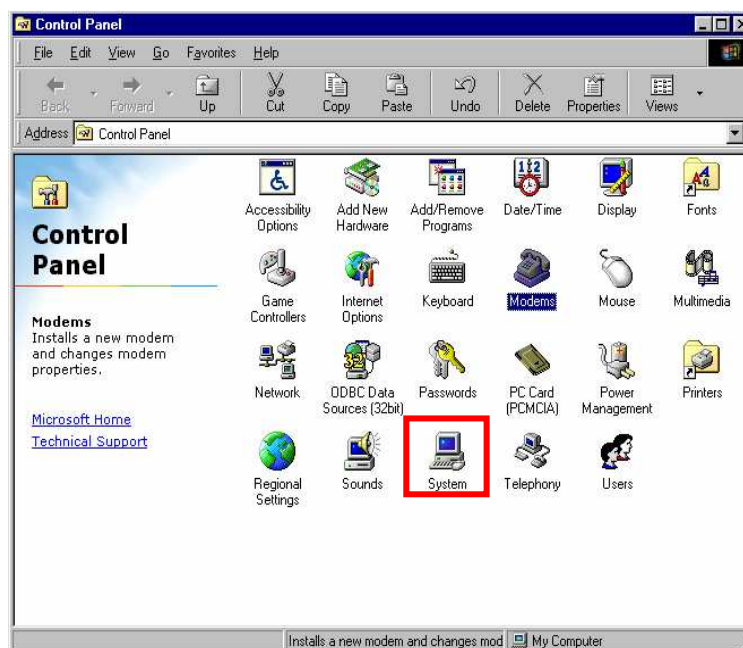
Illegal hang-up when set up dialer

Windows 98SE may need a couple minutes to shutdown itself, or may hang-up in worst case after iBurst Terminal Virtual COM Port driver installation.

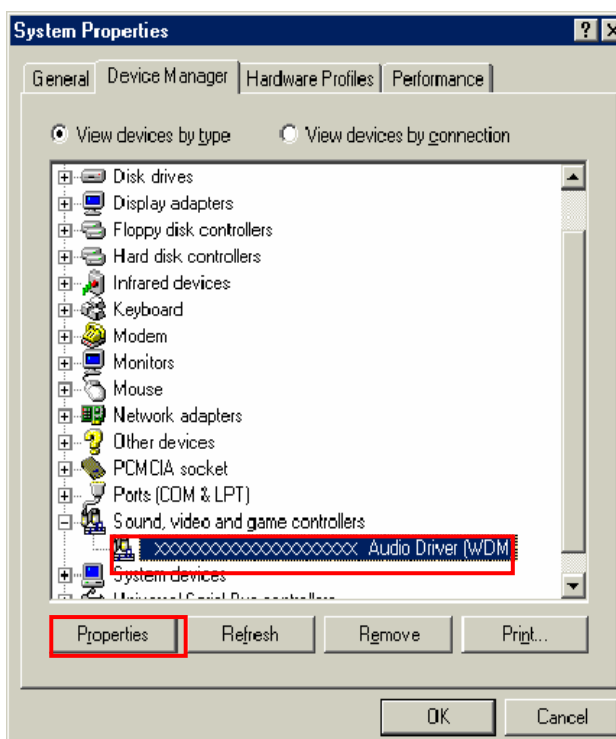
This case is from Windows OS and competition with other devices.

The following gives you the procedure to fix this problem.

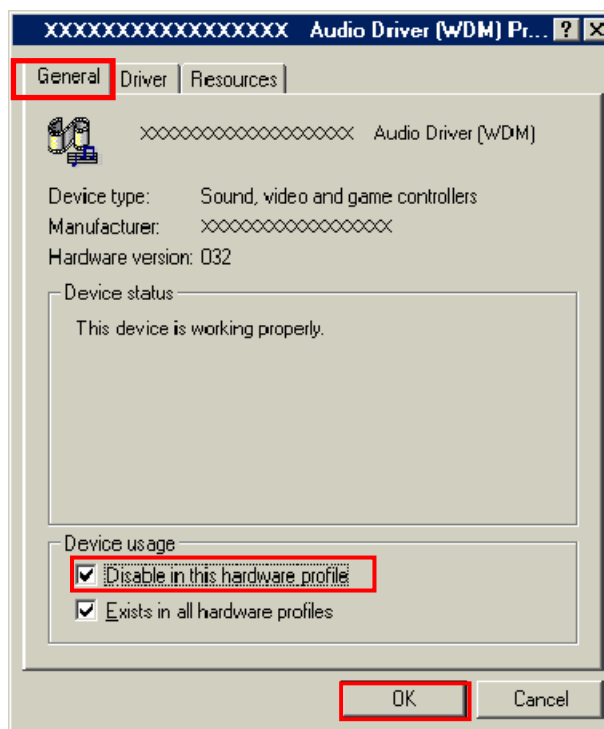
1. Open Device Manager [Start] -> [Settings] -> [Control Panel] -> [System] -> [Device Manager].



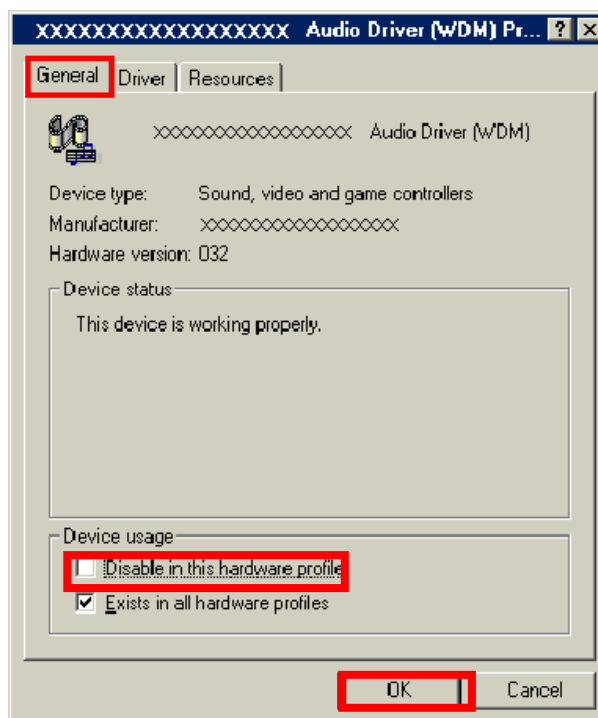
2. Disable sound card device and other which will not effect for Windows performance, ie network card and modem.



3. On the [General] tab, check the box labeled the [Disable in this hardware profile], and then click the [OK] button.



4. Re-install iBurst Terminal Virtual COM Port driver according to installation procedure, chapter 2 "Installation for Windows 98SE" step 20.
5. On the [General] tab, uncheck the box labeled the [Disable in this hardware profile], and then click the [OK] button.



PC hang-up when eject iBurst Terminal from Win98 USB port.

Windows 98SE basically does not support hot plug-out for USB interface.

You might find a problem that your PC hang-up itself when you eject iBurst Terminal from USB port during PC running.

In this case, please don't eject iBurst Terminal from USB port during PC running.

You should eject iBurst Terminal from USB port after you shutdown your PC.

Mac

Data rate

iBurst Terminal would not perform maximum data rate when it connects with Mac PC.

This is obviously caused by Mac OS.

And typical data rate connecting with Mac is 800Kbps at downlink and 240Kbps at uplink.

Chapter 7

Information

FCC Compliance Statement

FCC WARNING

Changes or modifications not expressly approved by the party responsible for compliance could void the user's authority to operate the equipment.

NOTICE

This equipment has been tested and found to comply with the limits for a Class B digital device, pursuant to part 15 of the FCC rules. These limits are designed to provide reasonable protection against harmful interference in a residential installation. This equipment generates, uses and can radiate radio frequency energy and, if not installed and used in accordance with the instructions, may cause harmful interference to radio communications. However, there is no guarantee that interference will not occur in a particular installation. If this equipment does cause harmful interference to radio or television reception, which can be determined by turning the equipment off and on, the user is encouraged to try to correct the interference by one or more of the following measures:

- Reorient or relocate the receiving antenna.
- Increase the separation between the equipment and receiver.
- Connect the equipment into an outlet on a circuit different from that to which the receiver is connected.
- Consult the dealer or an experienced radio/TV technician for help.

FCC RF Radiation Exposure Statement

This transmitter must not be co-located or operated in conjunction with any other antenna or transmitter.

This equipment complies with FCC radiation exposure limits set forth for uncontrolled equipment and meets the FCC radio frequency (RF) Exposure Guidelines in Supplement C to OET65. This equipment should be installed and operated with at least 20cm and more between the radiator and person's body (excluding extremities: hands, wrists, feet and ankles).