

# T02E Mini Printer Quick Start Guide

Before using, please read this manual carefully and keep it properly for future reference.

## English

### 01. Packing list

Printer\*1

printing paper \*1

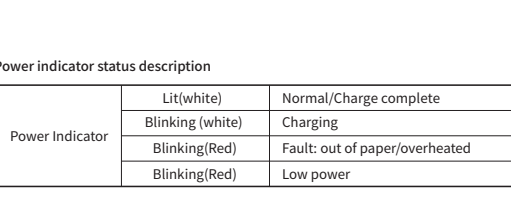


paper holder baffle\*1

Manual\*1



### 02. Machine description



#### Power indicator status description

Power Indicator	Lit(white)	Normal/Charge complete
	Blinking (white)	Charging
	Blinking(Red)	Fault: out of paper/overheated
	Blinking(Red)	Low power

### 03. Precautions

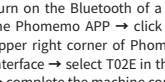
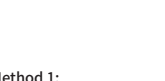
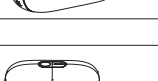
- ① Please use 5V=2A input for charging.
- ② Please connect the USB cable to the power adapter before charging, please gently insert or unplug the charging cable when charging, to prevent excessive force from damaging the port.
- ③ After the charging is completed, please unplug the charging cable in time.
- ④ In order to avoid danger, do not use or charge in the environment of high temperature, high humidity, heavy smoke and dust, such as in bathroom, steam room, near to open flame, etc.
- ⑤ Improper charging may cause damage to the print head.
- ⑥ Do not touch the print head to prevent scalding caused by overheating.
- ⑦ The tearing blade is sharp, please be careful to avoid touching it by mistake.
- ⑧ If the machine is malfunctioning, insert the reset hole to restart the machine.

#### Battery warning instructions

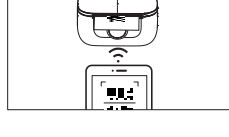
- \* It is forbidden to disassemble, hit, squeeze the battery, or throw it into fire;
- \* If severe swelling occurs, please do not reuse it;
- \* Do not place in a high temperature environment, and it is strictly prohibited to use the battery after soaking in water;
- \* There is a danger of explosion if the battery is replaced by the wrong type. Be sure to dispose of the used battery according to the instructions;
- \* If consumers use a power adapter for power supply, they should purchase a power adapter that meets the requirements of corresponding safety standards or a power adapter with CCC certification.

### 04. APP download method

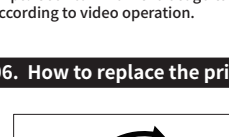
Please search for "Phomemo" in APP store, download and install it.



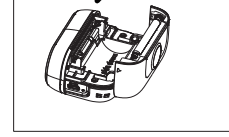
### 05. App connection method



1. Please charge the printer for the first use, and then press and hold the power button for about 3 seconds to turn it on.
2. Connect the machine.



**Method 1:**  
Turn on the Bluetooth of a phone → open the Phomemo APP → click the icon in the upper right corner of Phomemo APP main interface → select T02E in the list to connect → complete the machine connection



**Method 2:**  
After starting up, double-click the start-up button printing QR code → scan the code in the Phomemo APP to connect

\*Tips: User can view the usage tutorial in the APP, and connect the machine according to video operation.

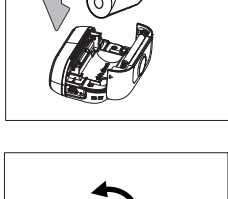
### 06. How to replace the printing paper



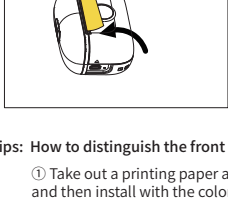
1. Open the top cover and take out printing paper



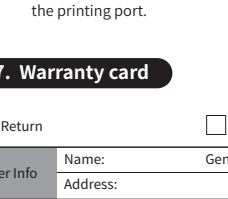
- 2.Remove the paper roll to be replaced.



- 3.Remove the protective sticker from the paper roll.



- 4.Place the paper roll in the printer.



- 5.Close the flap.

#### \*Tips: How to distinguish the front and back of printing paper

- ① Take out a printing paper and use your nails to scratch the paper firmly, and then install with the color side up.
- ② Please make sure that the smooth surface is facing up and aligned with the printing port.

### 07. Warranty card

☐ Return ☐ Exchange ☐ Repair

User Info	Name:	Gender:	Phone:
	Address:		

Product Info	Purchase date:
	Product order number:

Requirements of return /replacement /repair	Product Serial Number:
	Reason description:

Maintenance records	Failure condition:	Maintenance person:
	Handling situation:	Delivery date:
	Maintenance ticket number:	Delivery date:

### 08. Official Thermal Paper Type

- ①**Tri-proof thermo-sensitive paper:** No bisphenol-A contained. Have a certain degree of scratch resistance.
- ②**Colored paper:**No bisphenol-A contained. Include yellow, pink and blue paper.
- ③**Adhesive paper:**No bisphenol-A contained. The printing paper has adhesiveness on one side, which can be directly pasted and used.
- ④**Semi-permeable/transparent thermo-sensitive film:**No bisphenol-A contained. Water-proof, oil-proof and scratch-resistant; excellent photo-taking effect.

\* The aforementioned printing paper is an official proprietary consumable.

\* If you fail to use the official consumables, causing the printer to malfunction, you will not be entitled to enjoy the "three guarantees" policy.

### 09. FCC WARNING

#### FCC Warning statement:

This device complies with part 15 of the FCC Rules. Operation is subject to the following two conditions: (1) this device may not cause harmful interference, and (2) this device must accept any interference received, including interference that may cause undesired operation.

Any changes or modifications not expressly approved by the party responsible for compliance could void the user's authority to operate the equipment.

NOTE: This equipment has been tested and found to comply with the limits for a Class B digital device, pursuant to Part 15 of the FCC Rules. These limits are designed to provide reasonable protection against harmful interference in a residential installation. This equipment generates, uses and can radiate radio frequency energy and, if not installed and used in accordance with the instructions, may cause harmful interference to radio communications. However, there is no guarantee that interference will not occur in a particular installation.

If this equipment does cause harmful interference to radio or television reception, which can be determined by turning the equipment off and on, the user is encouraged to try to correct the interference by one or more of the following measures:

- Reorient or relocate the receiving antenna.
- Increase the separation between the equipment and receiver.
- Connect the equipment into an outlet on a circuit different from that to which the receiver is connected.

-- Consult the dealer or an experienced radio/TV technician for help. The device has been evaluated to meet general RF exposure statement.

The device can be used in portable exposure condition without restriction

### 10. ISED Warning

- English:  
This device contains licence-exempt transmitter(s)/receiver(s) that comply with Innovation, Science and Economic Development Canada's licence-exempt RSS(s). Operation is subject to the following two conditions:  
(1) This device may not cause interference.  
(2) This device must accept any interference, including interference that may cause undesired operation of the device.

IC RF exposure statement:  
The device has been evaluated to meet general IC RF exposure requirement. The device can be used in portable exposure condition without restriction.

- French:  
L' émetteur/récepteur exempt de licence contenu dans le présent appareil est conforme aux CNR d' Innovation, Sciences et Développement économique Canada applicables aux appareils radio exempts de licence. L' exploitation est autorisée aux deux conditions suivantes :  
1) L' appareil ne doit pas produire de brouillage;  
2) L' appareil doit accepter tout brouillage radioélectrique subi, même si le brouillage est susceptible d' en compromettre le fonctionnement

IC Déclaration d'exposition aux RF:  
L'appareil a été évalué pour répondre aux exigences générales d'exposition aux RF d'IC.  
L'appareil peut être utilisé dans des conditions d'exposition portable sans restriction.

