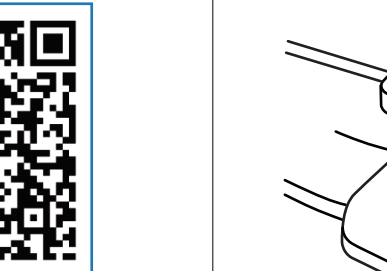


手环渲染图

USER MANUAL SMART BRACELET

Downloading the App

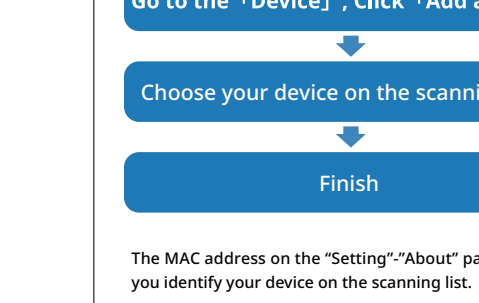
Scan the following QR code, download and install the App.



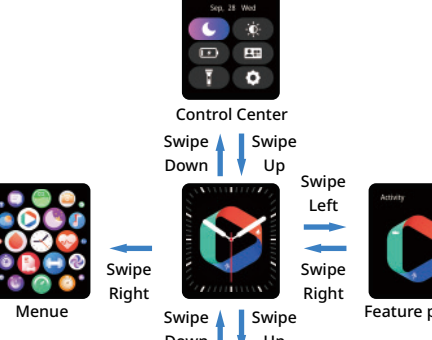
Scan QR Code and Download

Charging and Active

Charging the device to active before the first time using;
To charge your device, plug the charging cable into the
adapter or USB port on your computer.

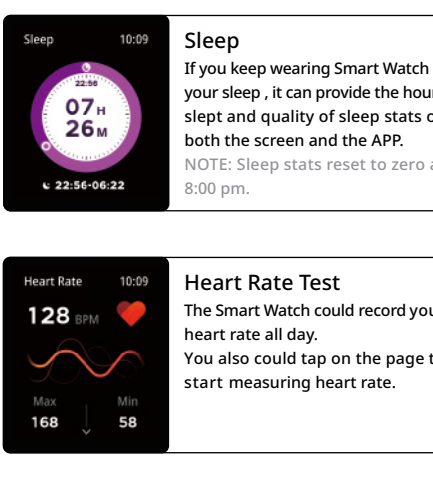


Pairing



The MAC address on the "Setting"- "About" page could help
you identify your device on the scanning list.

Use the Touch Screen



Smart Watch Features

Sleep
If you keep wearing Smart Watch in your sleep , it can provide the hours slept and quality of sleep stats on both the screen and the APP.
NOTE: Sleep stats reset to zero at 8:00 pm.

Heart Rate Test
The Smart Watch could record your heart rate all day.
You also could tap on the page to start measuring heart rate.

Smart Watch Features

Sports
Smart Watch automatically tracks Steps taken on the screen.
NOTE: Your movement stats reset to zero at midnight.

Training
Tap the training icon on the menu to start a new training measure recording, there are 8 sport modes to be chosen.
The last training recording will be shown on the training page.

Smart Watch Features

Blood Pressure Test
Tap on the blood pressure page to start measuring your blood pressure.
On the blood pressure page, It can show the blood pressure measured data of the last times.

SpO2 Test
Tap the SpO2 page to start measuring your SpO2.
On the SpO2 page, It can show the SpO2 measured data of the last times.

Smart Watch Features

Weather
It could show the weather info of current and tomorrow on the weather page.
Weather info is synced after connecting with the APP, it will not be updated after a long disconnected.

Messages Reminder
The device can sync incoming notifications from Twitter, Facebook, Whatsapp, Instagram etc.
Recently 5 messages can be stored.
Note: You can switch of/off the incoming notification in the APP.

Smart Watch Features

Remote Shutter
After connecting the device,you can remote control the camera on your phone.

Player Shutter
After connecting the device,you can remote control the music player on your phone.

Smart Watch Features

Other Features
Other features include stopwatch, alarm, timer, brightness,mute on/off, theater mode,factory reset, power off and about.

Stop Watch
Tap the start button on stopwatch page to start timing, and tap the stop button to stop timing.

Smart Watch Features

Silent Alarms
Set up the alarm on the APP, the device will vibrate to remind on time.

DND Mode
The device will turn off the vibration and trun down the brightness when the dnd mode is truned on.
Note: You can trun on/off the theater mode in the control center.

Smart Watch Features

Remind to Move
The device will vibrate to remind you to make a relax after 1 hour sitting.
Note: You can switch on/off the feature in the APP.

Remind to Drink
The smart watch will remind you "Time to Drink Some Water" at the planned drinking time.
Note: You can set the feature in tht APP.

Getting to Know Your Device

- 1.Using in Wet Conditions
Your device is water-resistant, which means it is rain-proof and splash-proof and can stand up to even the sweatiest workout.
NOTE: Do not swim with your Smart Bracelet. We also don't recommend showering with your wristband; though the water won't hurt the device, wearing it 24/7 does not give your skin a chance to breathe. Whenever you get your bracelet wet, dry it thoroughly before putting it back on.
- 2.Using Quick View
With Quick View you can check the time or the message form your phone on your Smart Bracelet without taping. Just turn your wrist towards you and the time screen will appear for a few seconds.

- 1.Environmental Conditions
Operating temperature: 14°F to 122°F (-10°C to 50°C)
Non-operating temperature: -4°F to 140°F (-20°C to 60°C)
- 2.Size
Fits a wrist between 5.5 and 7.7 inches in circumference.
- 3.Disposal and Recycling
Please kindly be aware that it is the consumer's responsibility to properly dispose and recycle Smart Bracelet and accompanying components. Do not dispose of Smart Bracelet with common household waste, the Smart Bracelet unit is considered electronic waste and should be disposed of at your local electronic equipment collection facility.
For more information, please contact your local electronic equipment waste management authority or the retailer where you bought the product.

General Info & Specifications