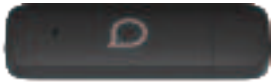


IK42 4G USB Dongle

Quick Start Guide



alcatel

Safety and Use

We recommend that you read this chapter carefully before using this device. The manufacturer disclaims any liability for damage, which may result because of improper use of this device or from use contrary to the instructions contained herein.



Do not switch on your device when its use is prohibited or when using the device may cause interference or danger.



Do not place magnetic storage media near your device. Radiation from the device may erase the information stored on them.



Follow rules or regulations in hospitals and health care facilities. Switch off your device near medical apparatuses.



Do not subject your device to high temperatures or use it in a place with flammable gas such as a petrol station.



Switch off your device while on an aircraft. The device may cause interference to aircraft control signals.



Keep your device and its accessories away from children. Do not allow children to use your device without supervision.



Switch off your device near high-precision electronic devices. The device may affect the performance of these devices.



Do not place your device or its accessories in containers with a strong electromagnetic field.



Do not attempt to disassemble your device or its accessories. Only qualified personnel are allowed to service or repair the device.



Observe the laws or regulations on device use. Respect others' privacy and legal rights when using your device.

It is recommended that the equipment only be used in an environment where the temperature is between -10°C and 55°C and humidity is between 5% to 95%.

Package Contents



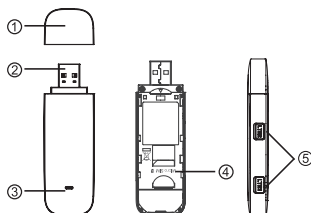
IK42 4G USB Dongle

Quick Start Guide

Safety and Warranty
Information

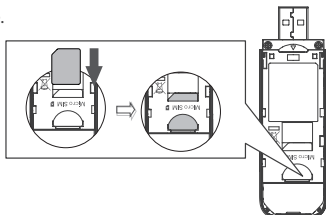
Getting to Know Your Modem

- ① Cap
- ② USB interface
- ③ Indicator LED
- ④ SIM Card Slot
- ⑤ TS9 external antenna interface x 2



How to start your modem

Step 1: Insert SIM card into the device.



Step 2: Plug into Computer.

Step 3: Software will auto-install. Once installation is complete, your modem is ready for use.

LED Indicator Description

LED Indicator	Description (state)
Constant Lilac light	Power supply finished
Fast flashing Red light (5Hz)	Searching for available network
Constant Red light	Network is not available
Slow flashing Blue light (1Hz)	Registering with LTE network
Constant Blue light	Registered with LTE network
Slow flashing Orange light (1Hz)	Registering with 3G network
Constant Orange light	Registered with 3G network
Slow flashing Green light (1Hz)	Registering with 2G network
Constant Green light	Registered with 2G network