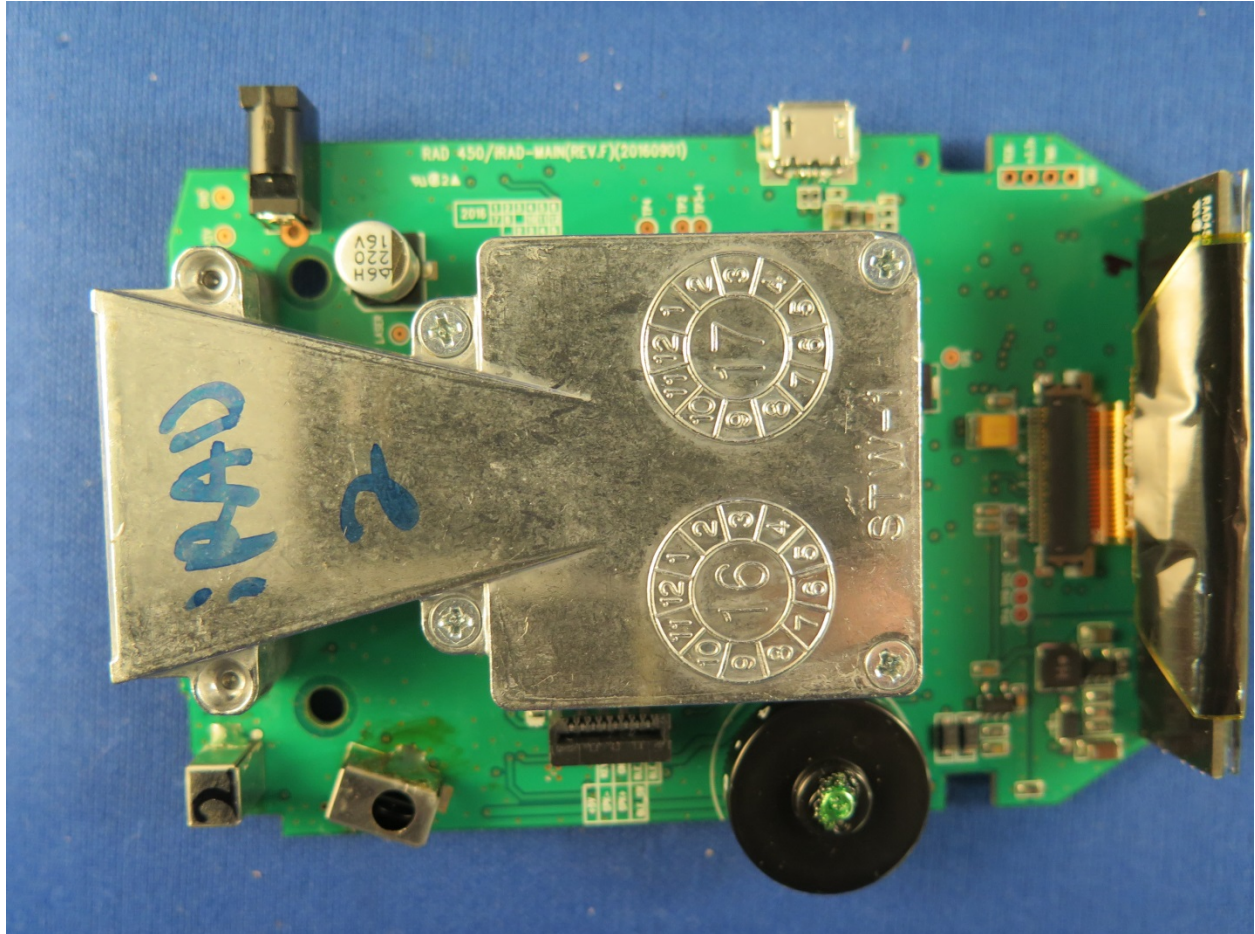


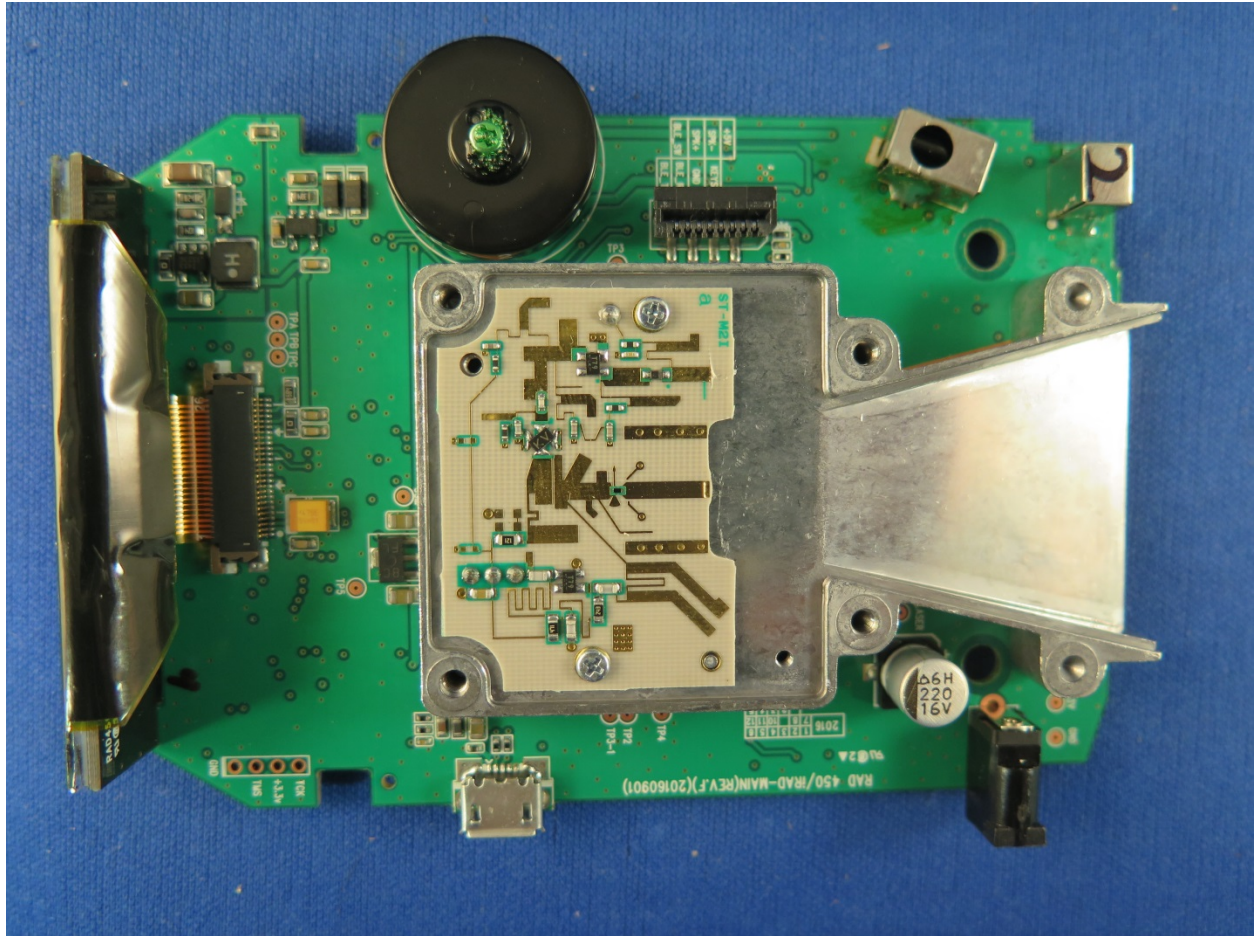
APPLICANT: COBRA ELECTRONICS CORPORATION

FCC ID: BBO2016D

INTERNAL PHOTOS



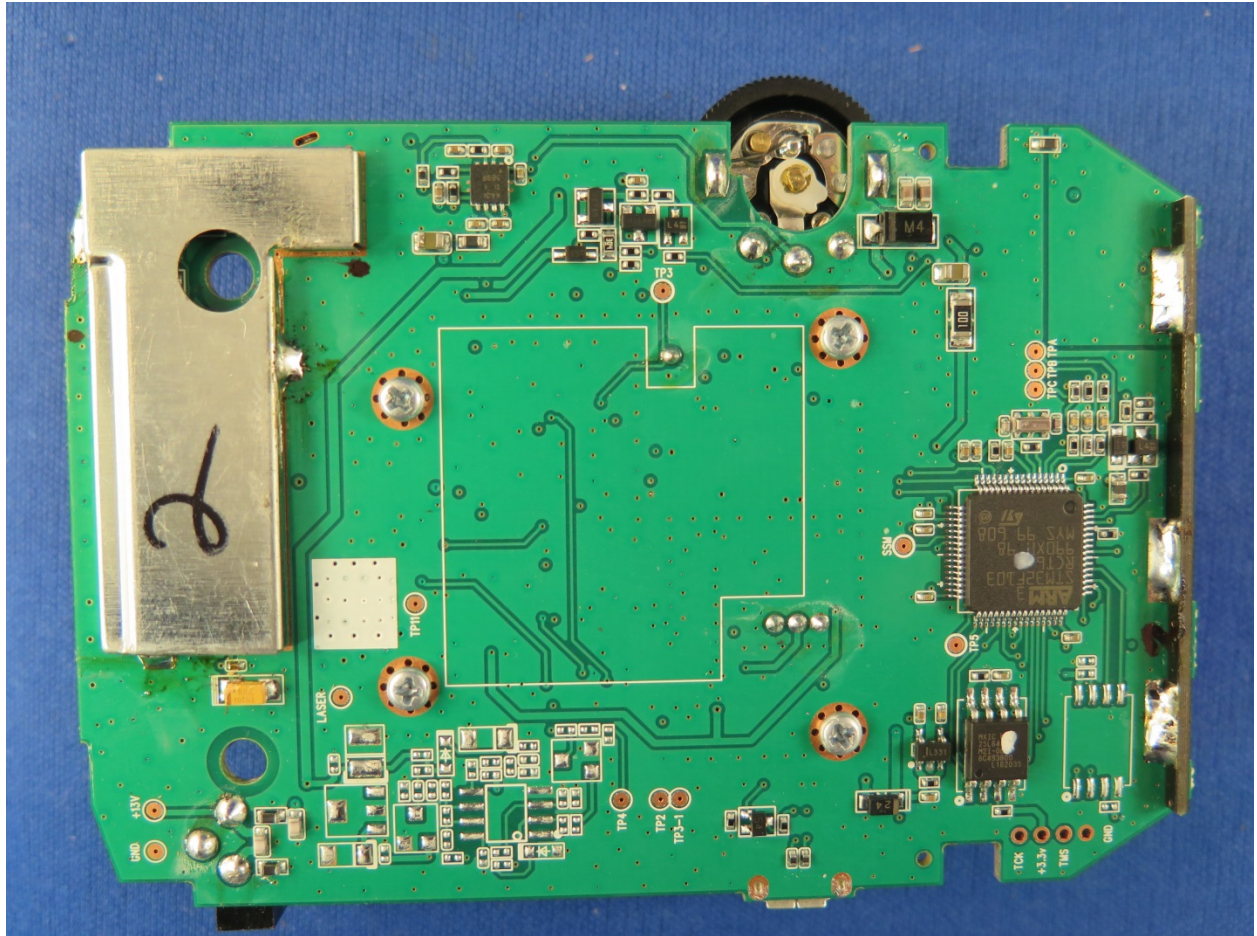
TOP PCB WITH HORN



TOP PCB TOP OF HORN REMOVED

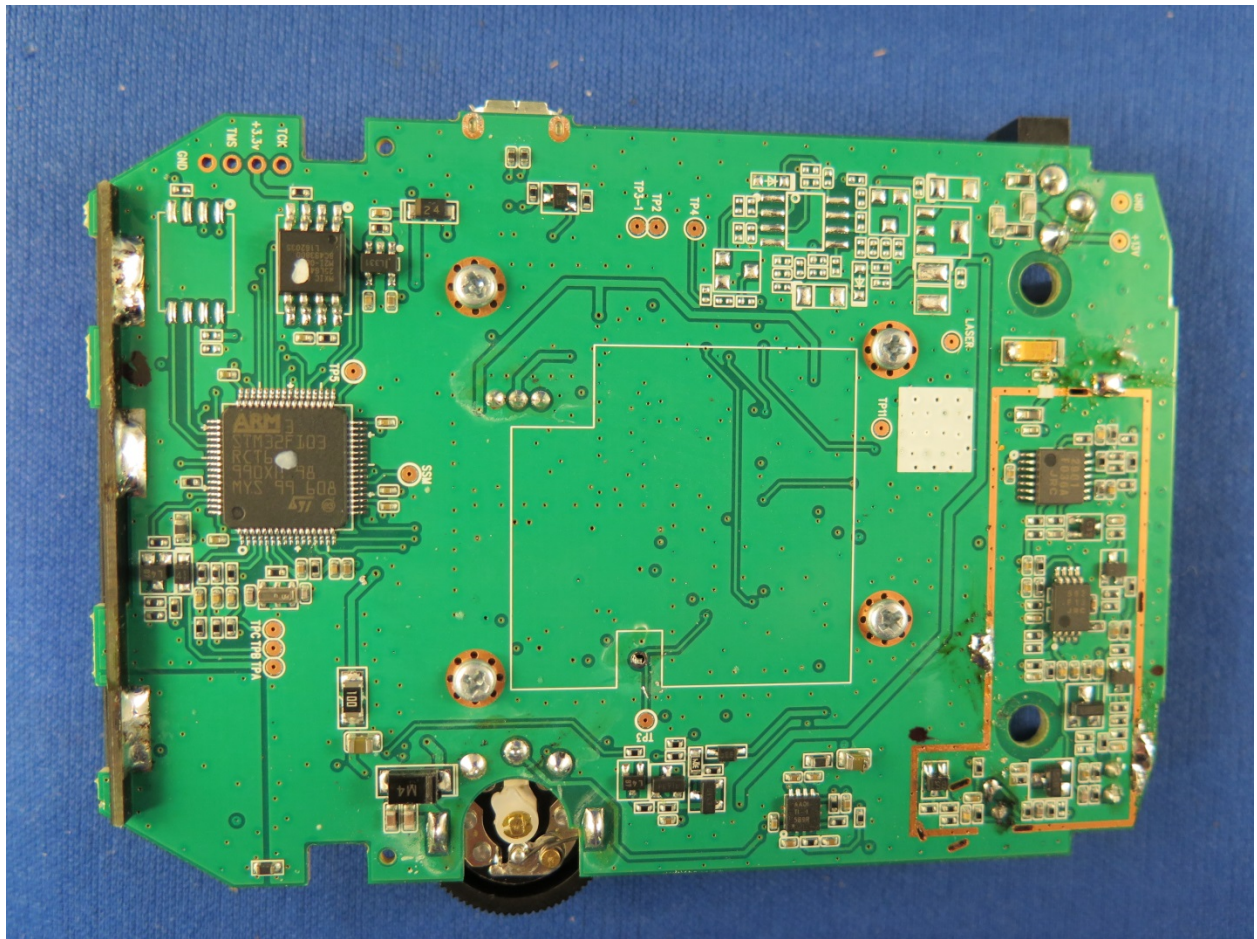




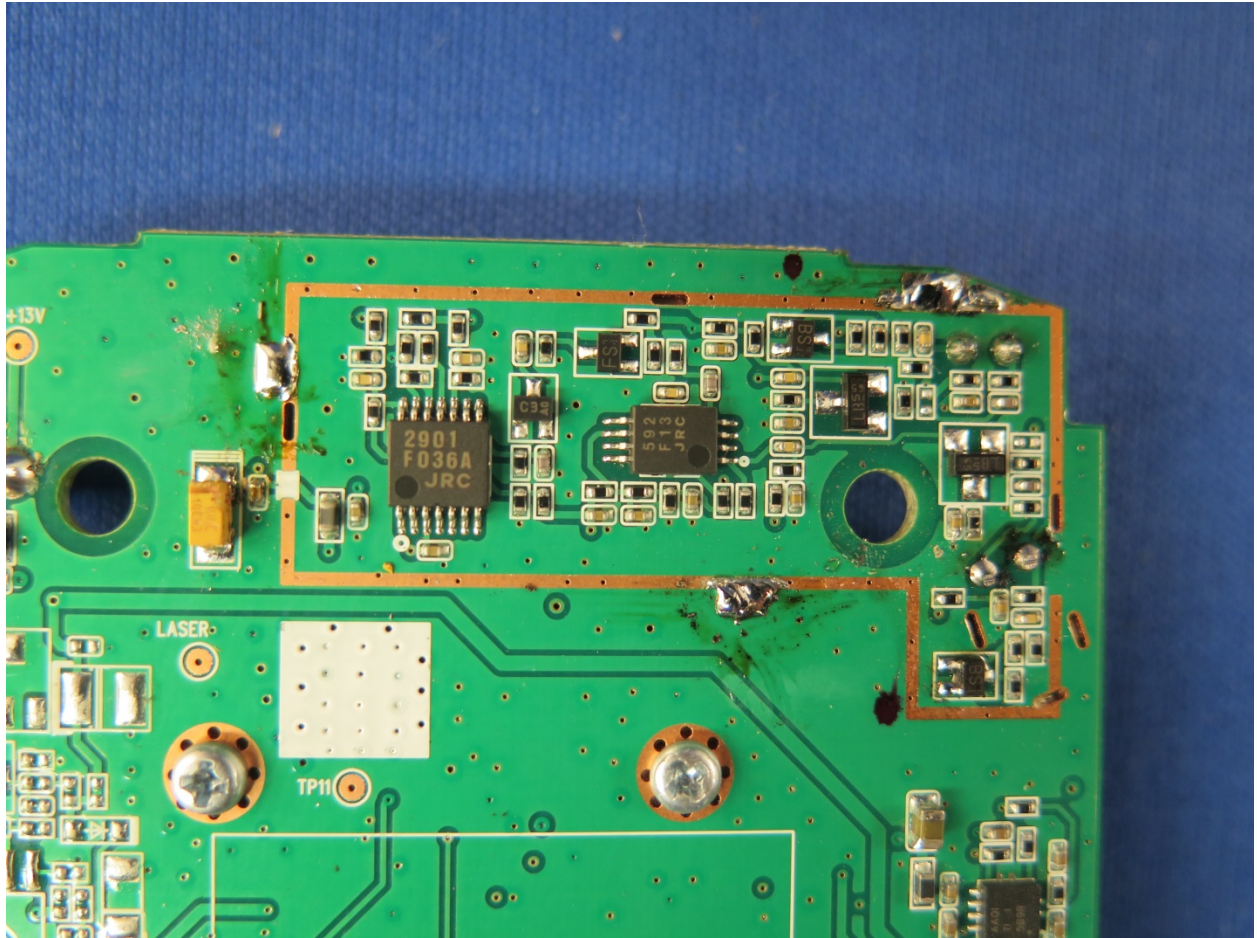


BOTTOM PCB WITH SHIELD



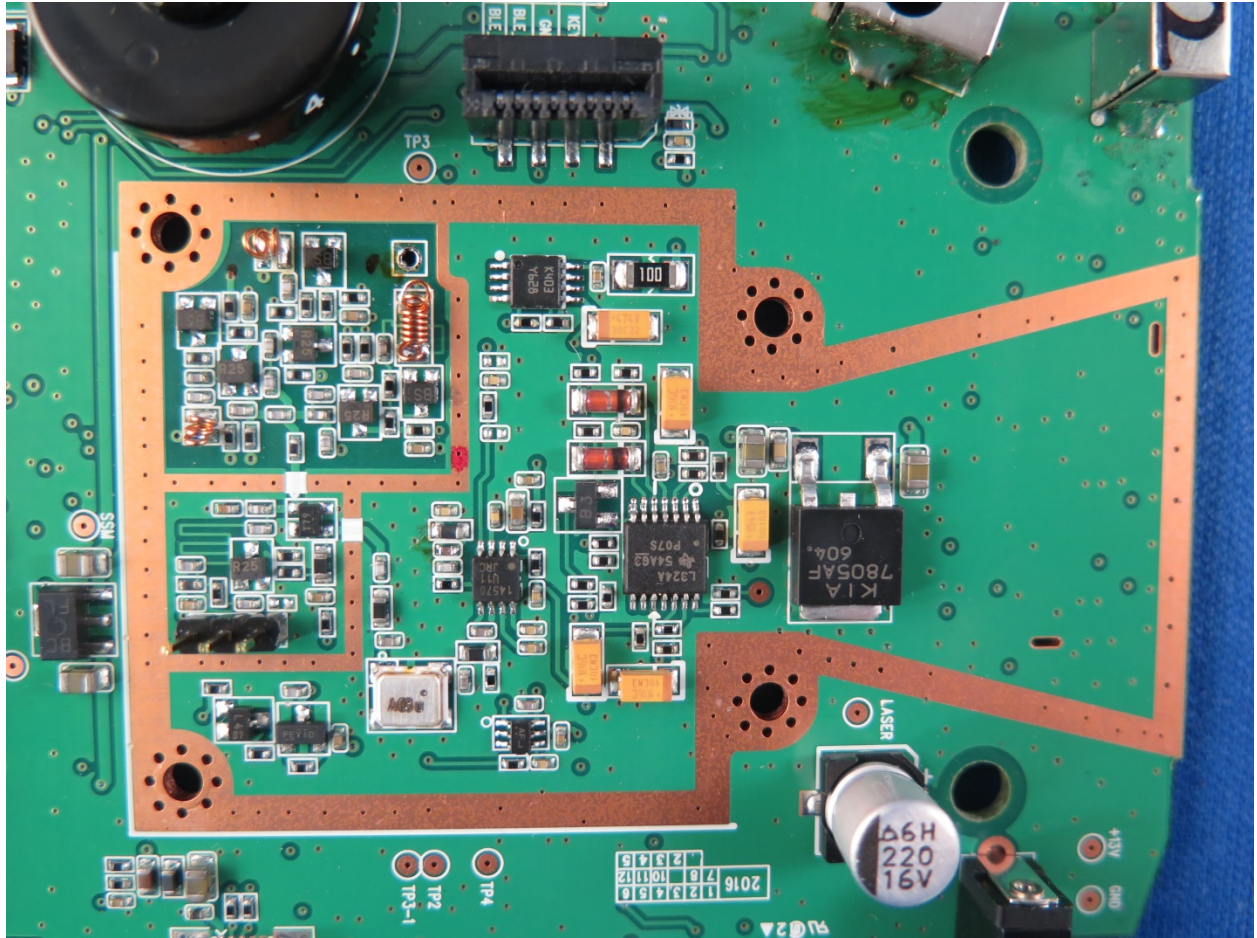


BOTTOM PCB WITH SHIELD REMOVED

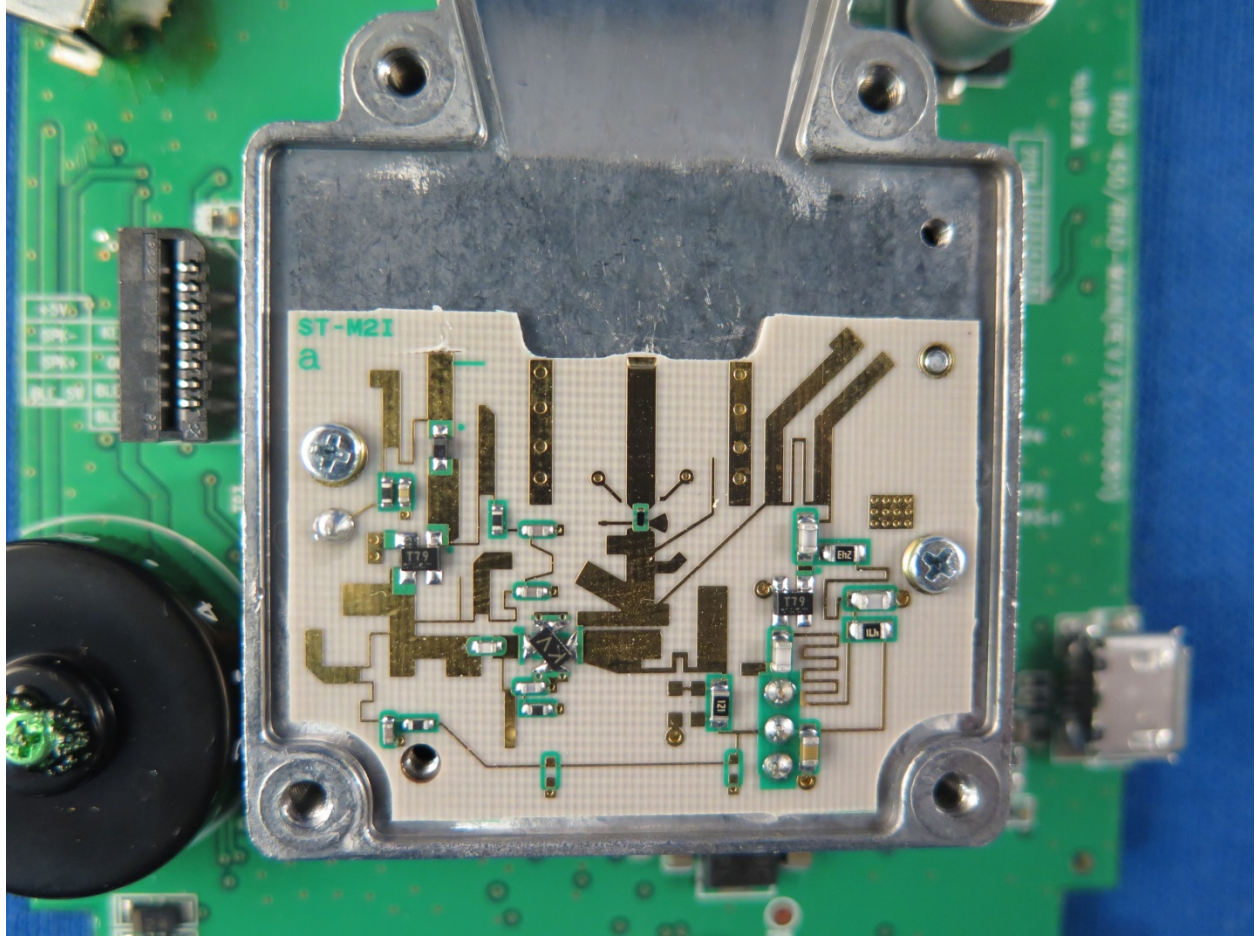


UP CLOSE PCB UNDER SHIELD



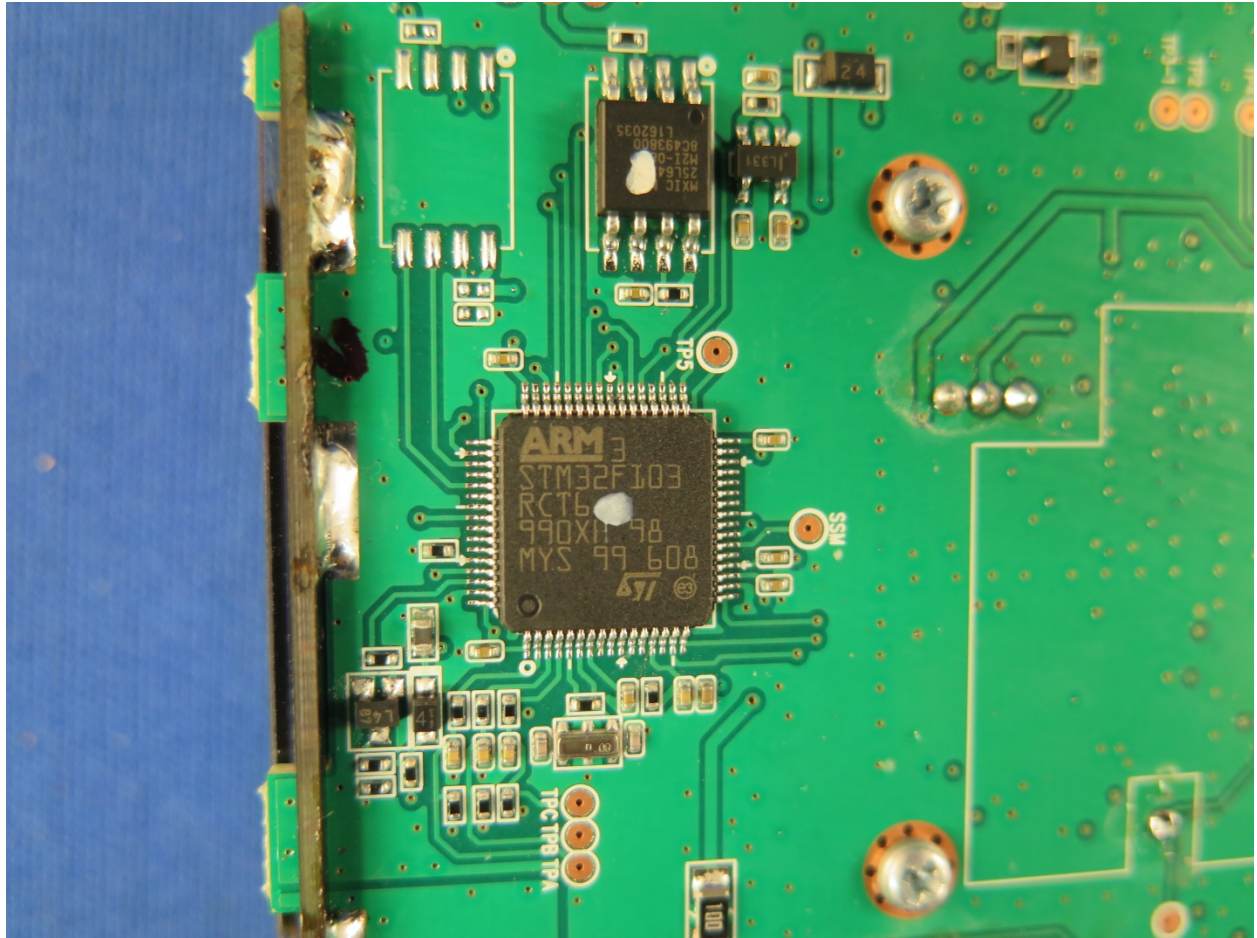


UP CLOSE PCB HORN REMOVED



LNA PCB





MICRO