

EXHIBIT 9**Internal Photographs**

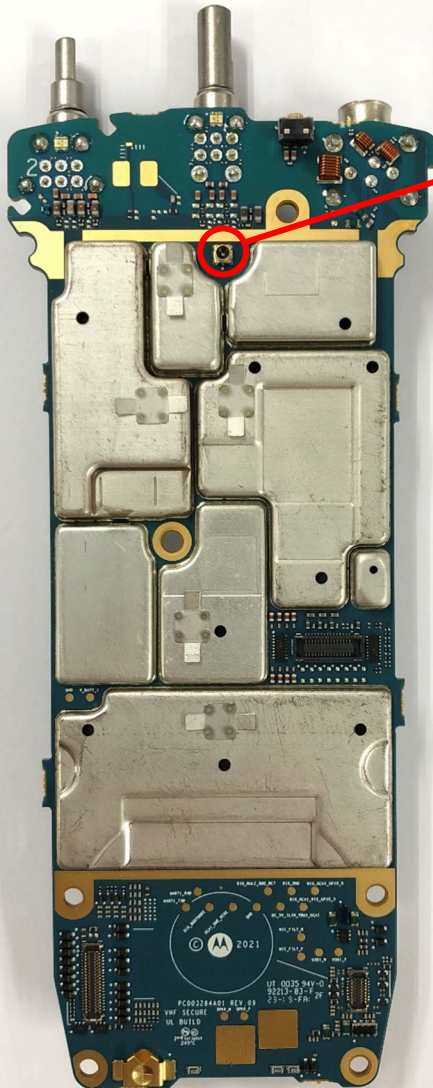
(Pursuant to FCC Part 2.1033(b)(7), 2.1033(c)(12) and RSP 100 Annex C)

The following photographs are attached.

Exhibit

- | | | |
|-----|---|----|
| 1. | Main board <u>with</u> Shields (Top) (APX N50) | 9A |
| 2. | Main board <u>without</u> Shields (Top) (AXP N50) | 9B |
| 3. | Main board <u>with</u> Shields (Bottom) (APX N50) | 9C |
| 4. | Main board <u>without</u> Shields (Bottom)(APX N50) | 9D |
| 5. | Main board <u>with</u> Shields (Top) (APX N30) | 9E |
| 6. | Main board <u>without</u> Shields (Top) (APX N30) | 9F |
| 7. | Main board <u>with</u> Shields (Bottom) (APX N30) | 9G |
| 8. | Main board <u>without</u> Shields (Bottom) (APX N30) | 9H |
| 9. | Chassis and housing (Front Side) (APX N50) | 9I |
| 10. | Main board with chassis and housing (Back side)
(APX N50/APX N50 for Hazloc Model) | 9J |
| 11. | Chassis and housing (Front Side) (APX N30) | 9K |
| 12. | Main board with chassis and housing (Back side)
(APX N30/APXN30 for Hazloc Model) | 9L |

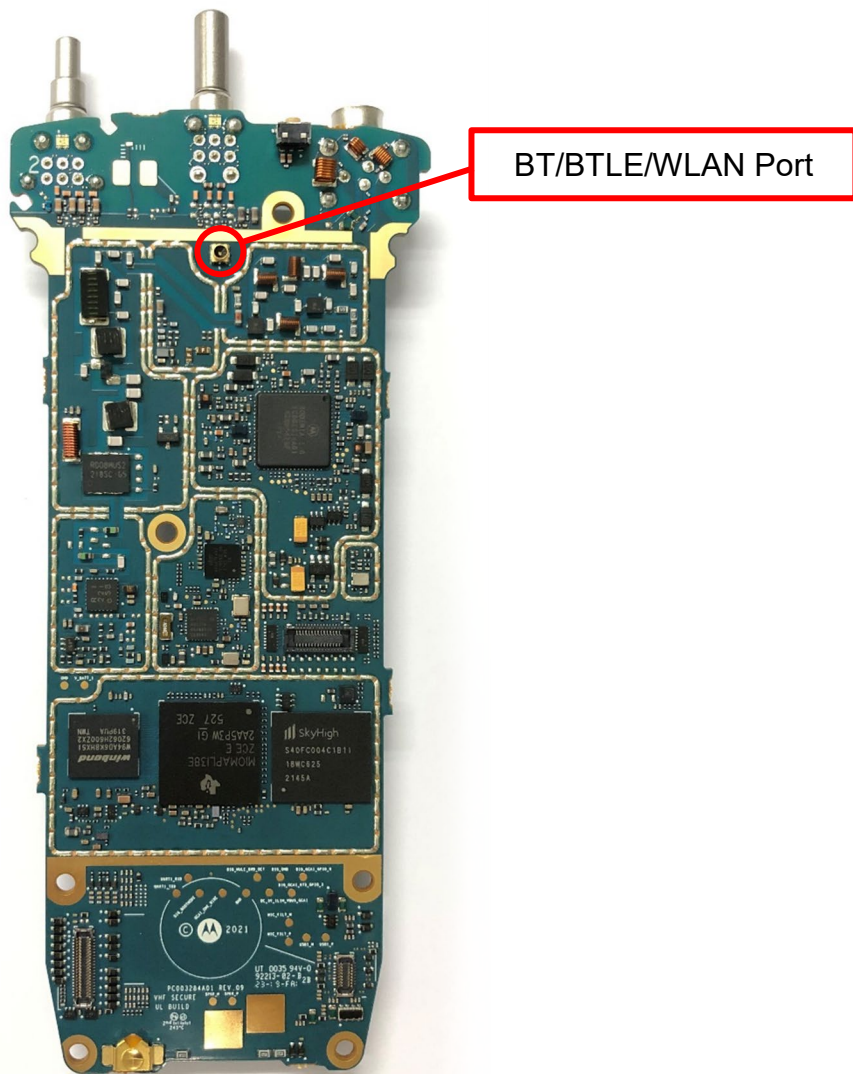
Exhibit 9A - Main board with Shields (Top) APX N50



BT/BTLE/WLAN Port

APX N50 / APX N50 For Hazloc Model

Exhibit 9B - Main board without Shields (Top) (APX N50)



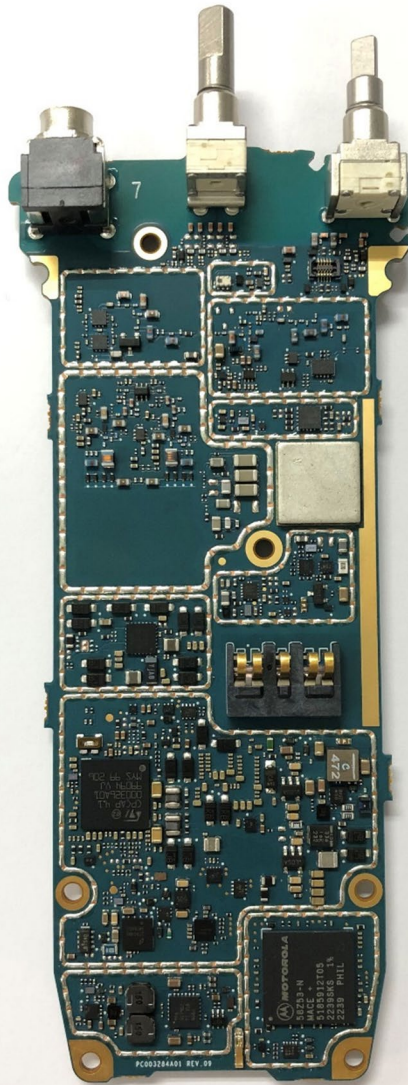
APX N50 / APX N50 For Hazloc Model

Exhibit 9C - Main board with Shields (Bottom) (APX N50)



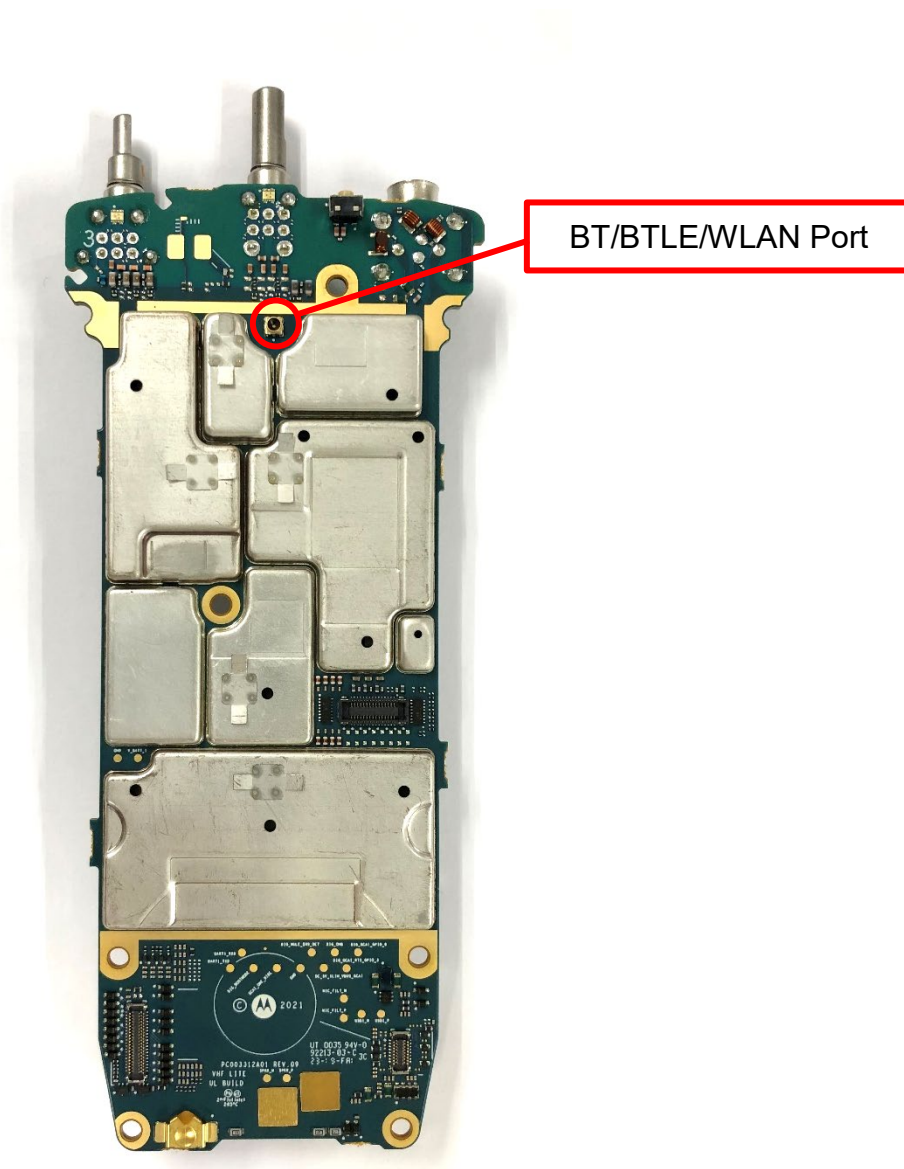
APX N50 / APX N50 For Hazloc Model

Exhibit 9D - Main board without Shields (Bottom) (APX N50)



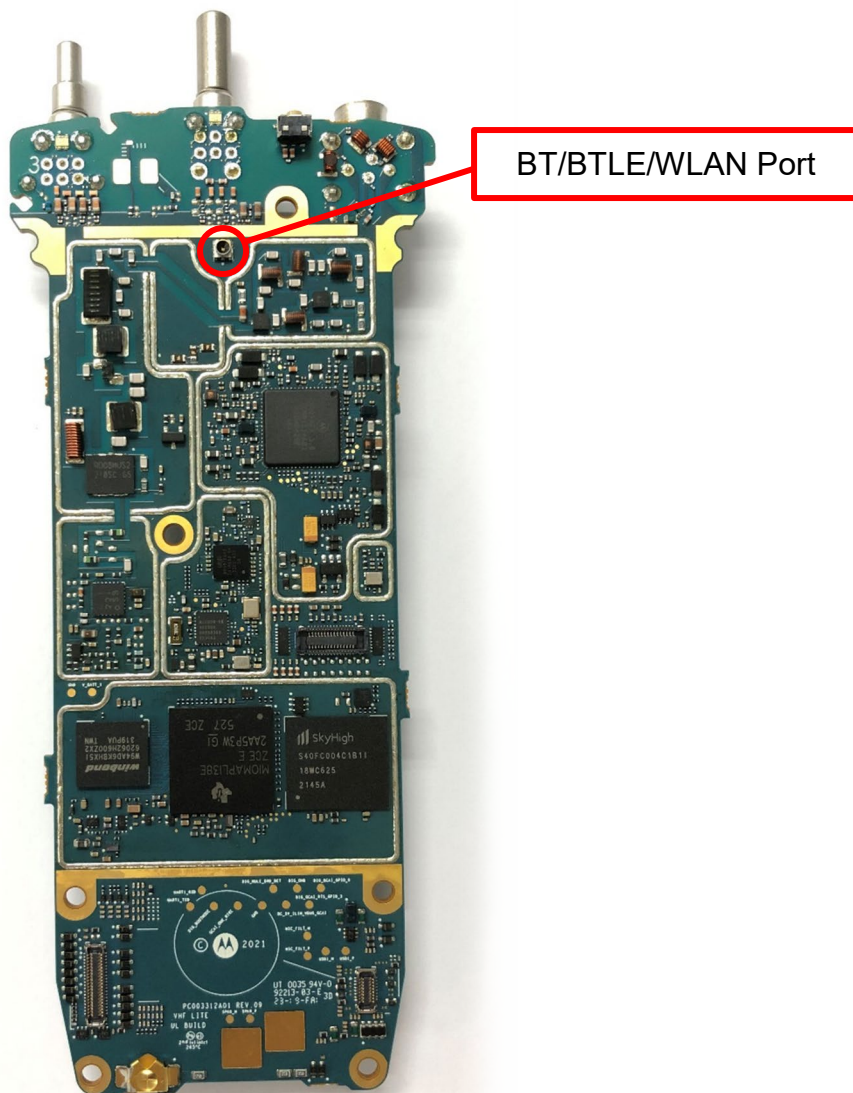
APX N50 / APX N50 For Hazloc Model

Exhibits 9E - Main board with Shields (Top) (APX N30)



APX N30 / APX N30 for Hazloc Model

Exhibit 9F - Main board without Shields (Top) (APX N30)



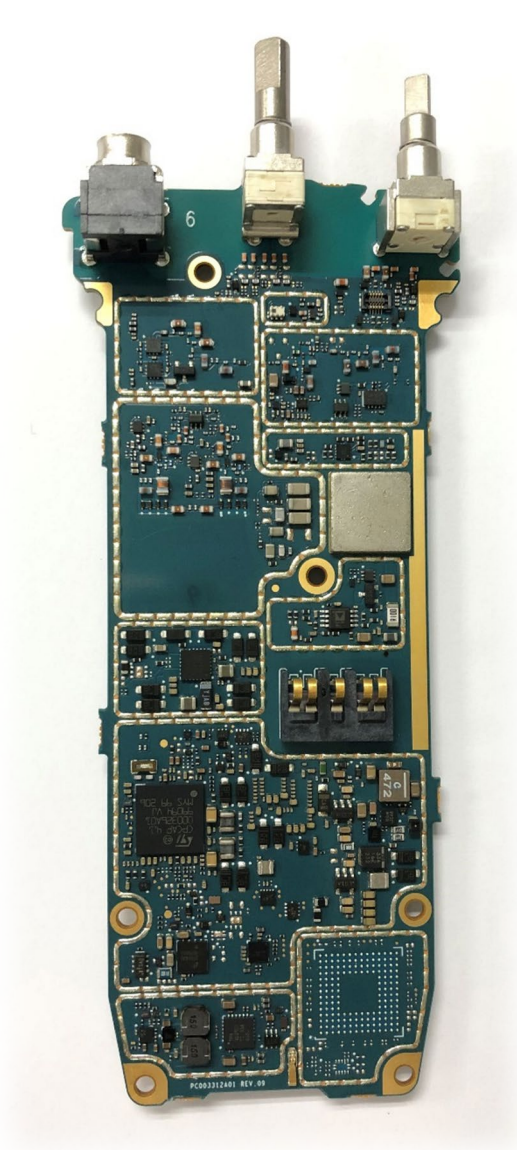
APX N30 / APX N30 for Hazloc Model

Exhibit 9G - Main board with Shields (Bottom) (APX N30)



APX N30 / APX N30 for Hazloc Model

Exhibit 9H - Main board without Shields (Bottom) (APX N30)



APX N30 / APX N30 for Hazloc Model

Exhibit 9I - Chassis and housing (Front side) (APX N50)



APX N50/ APX N50 for HAZLOC model

Exhibit 9J- Main board with chassis and housing (Back side)
(APX N50/ APX N50 for HAZLOC model)



APX N50



APX N50 for HAZLOC model

Exhibit 9K - Chassis and housing (Front side) (APX N30)



APX N30/ APX N30 for HAZLOC model

Exhibit 9L - Main board with chassis and housing (Back side)
(APX N30/ APX N30 for HAZLOC model)



APX N30



APX N30 for HAZLOC model

*** END ***