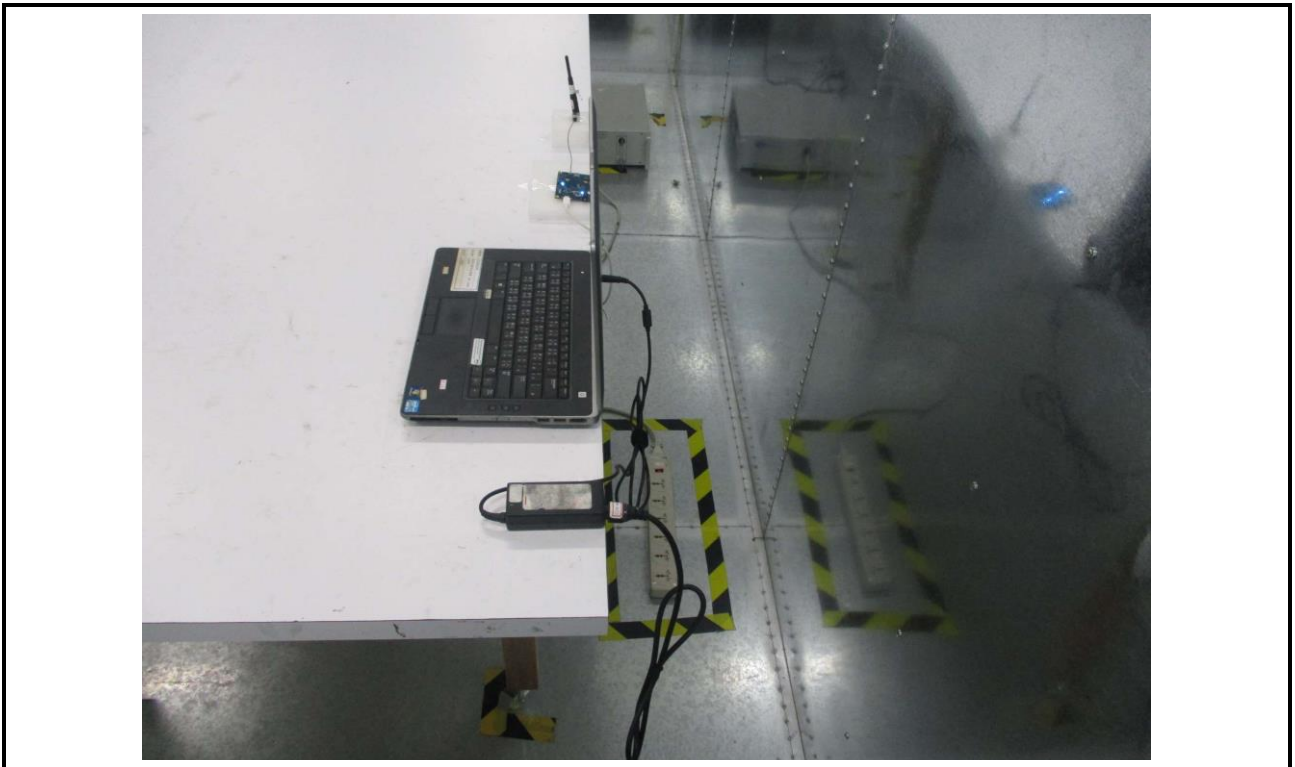


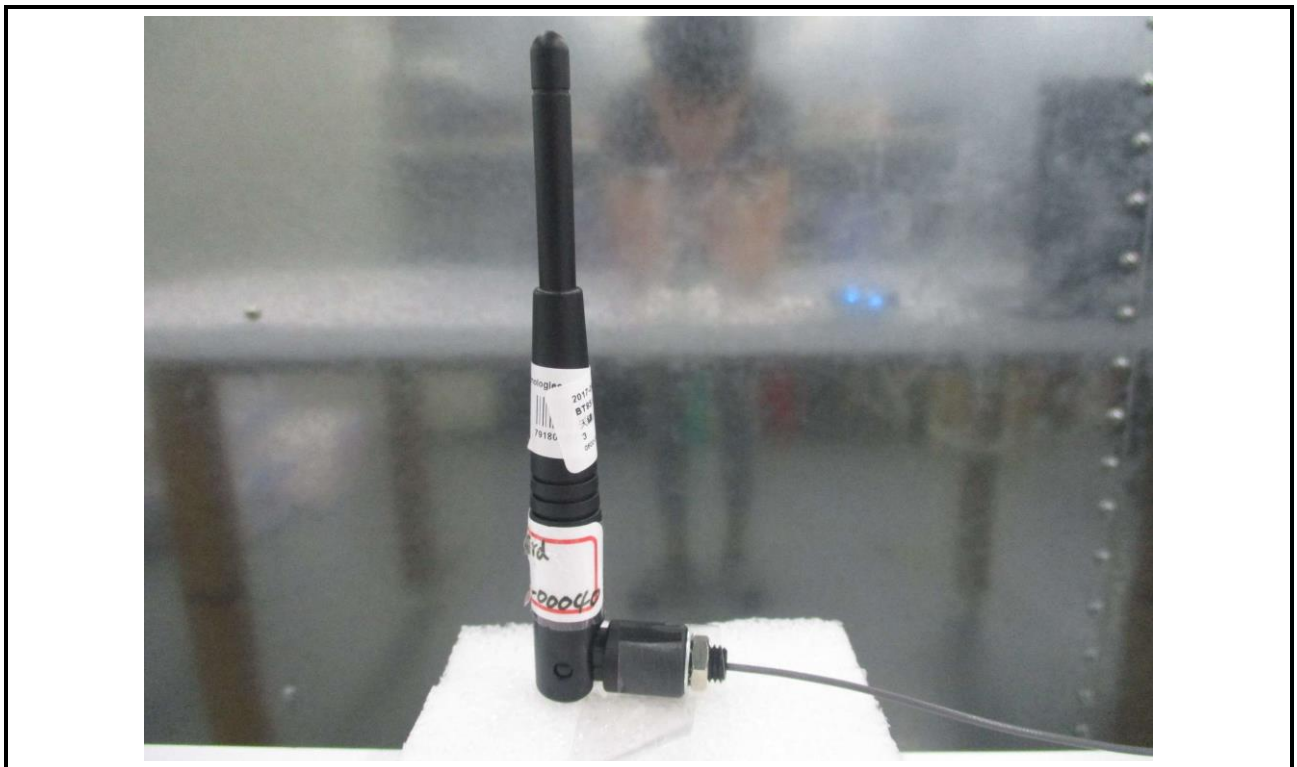
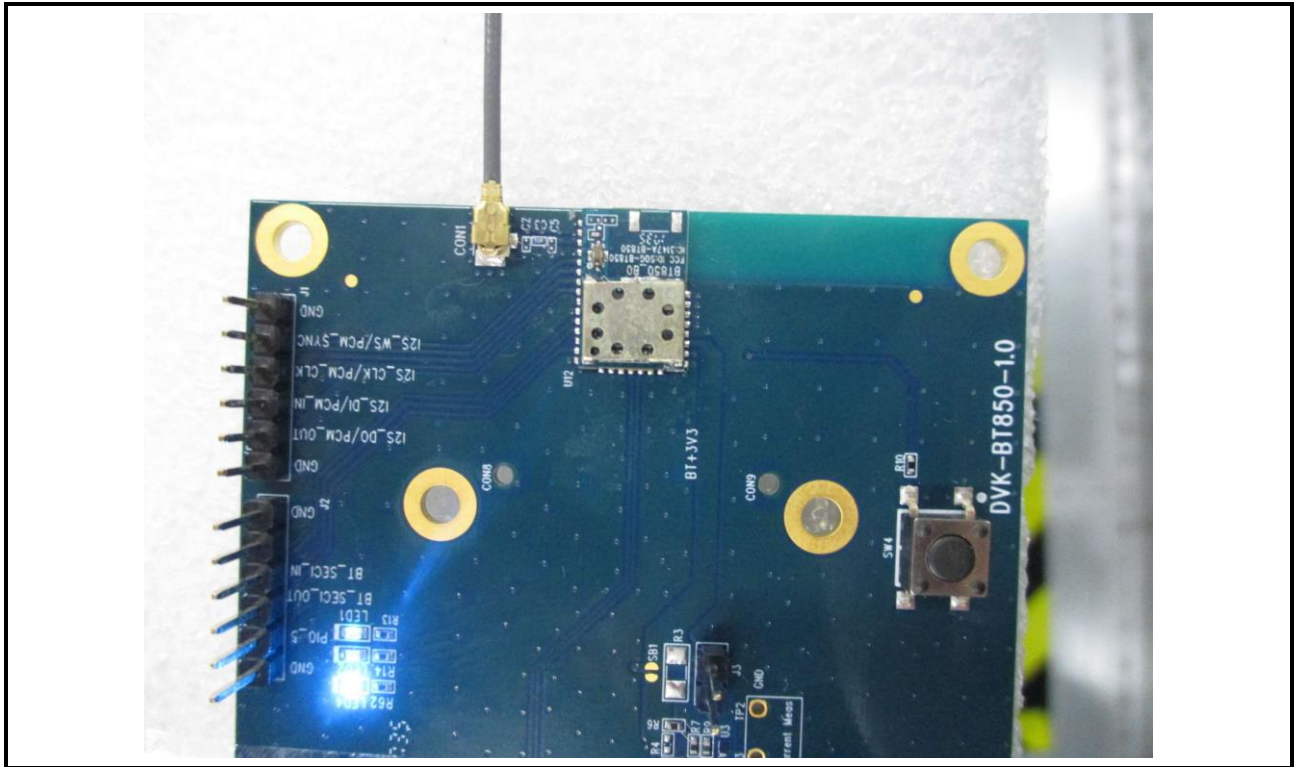
## Photographs of the Test Configuration

### *Configuration 2 : BT850-ST*

#### Conducted Emission Test

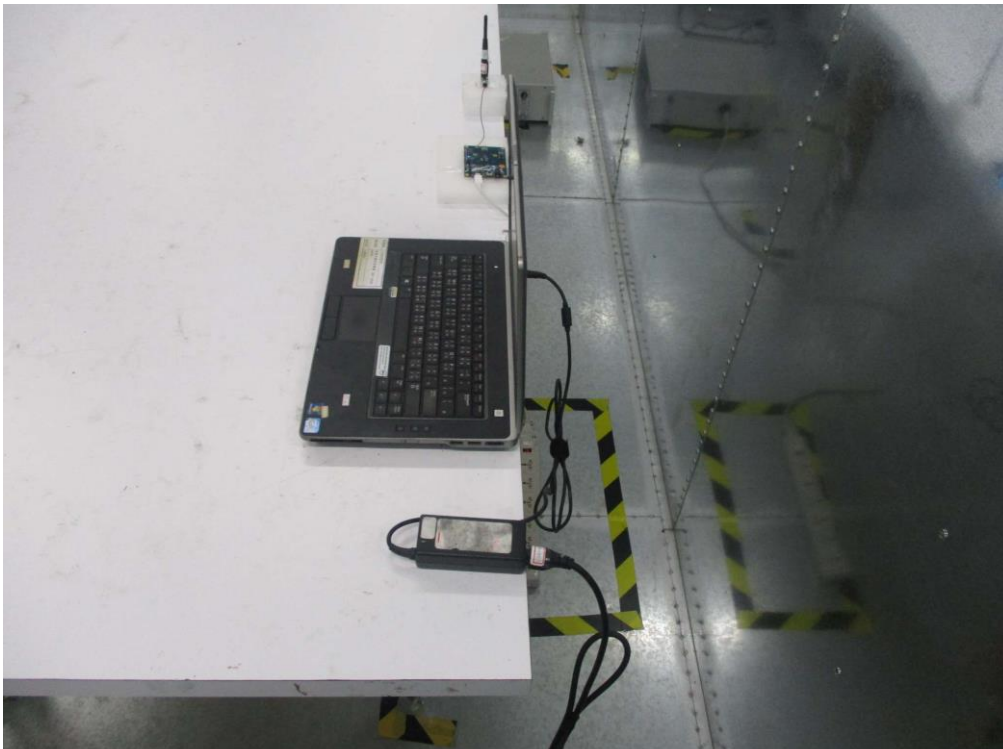


## Conducted Emission Test



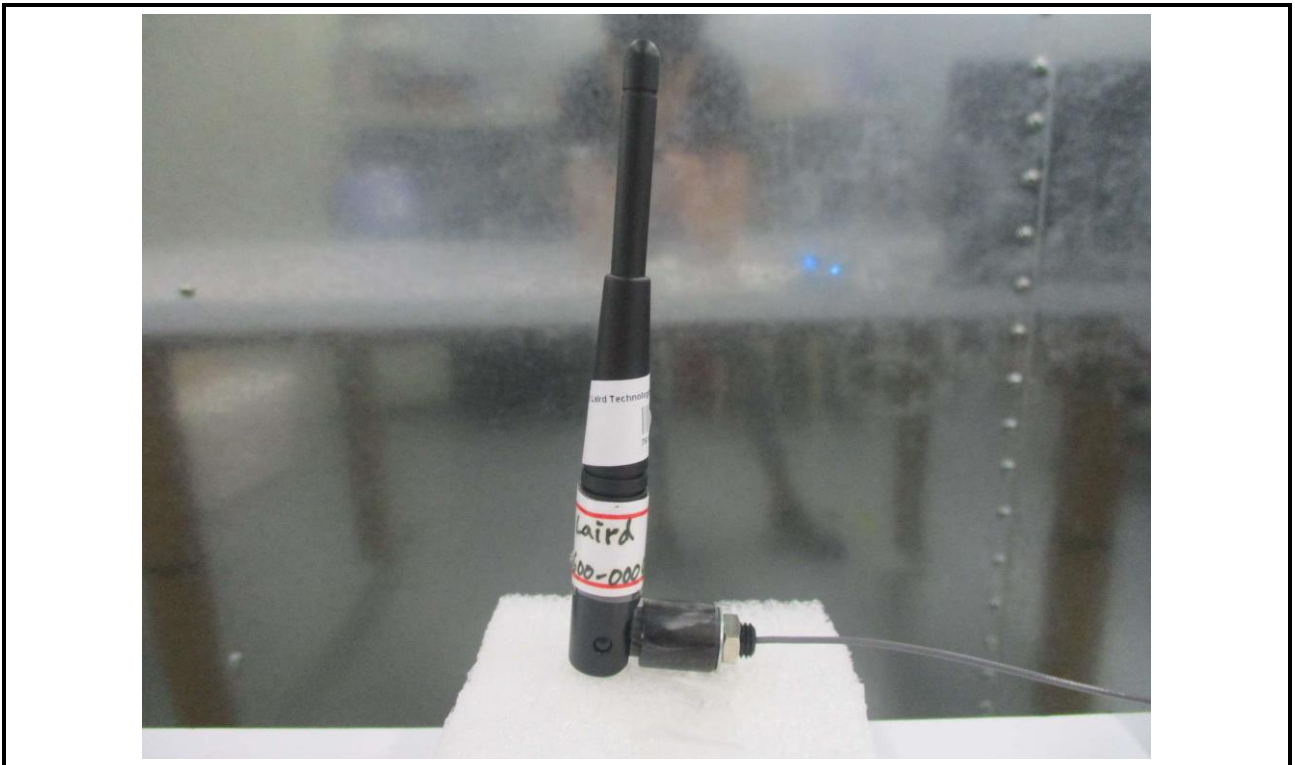
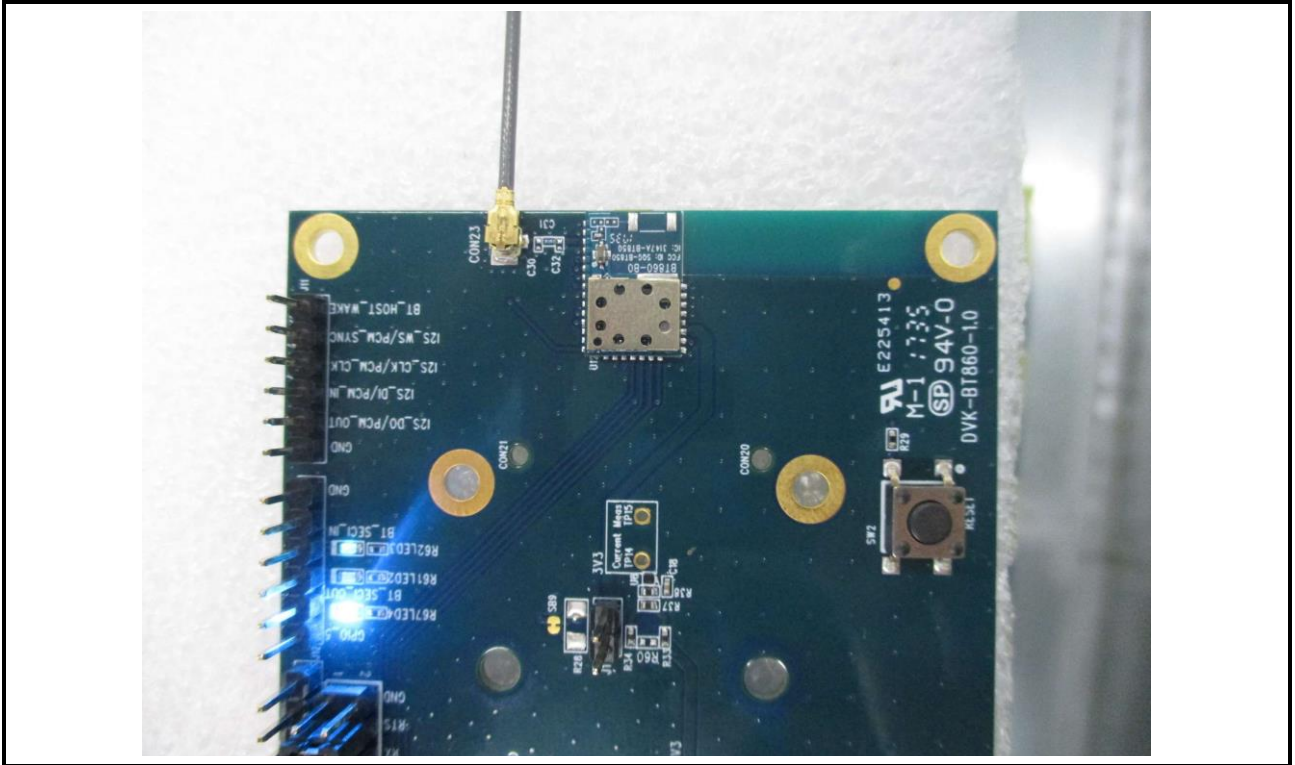
**Configuration 4 : BT860-ST**

**Conducted Emission Test**



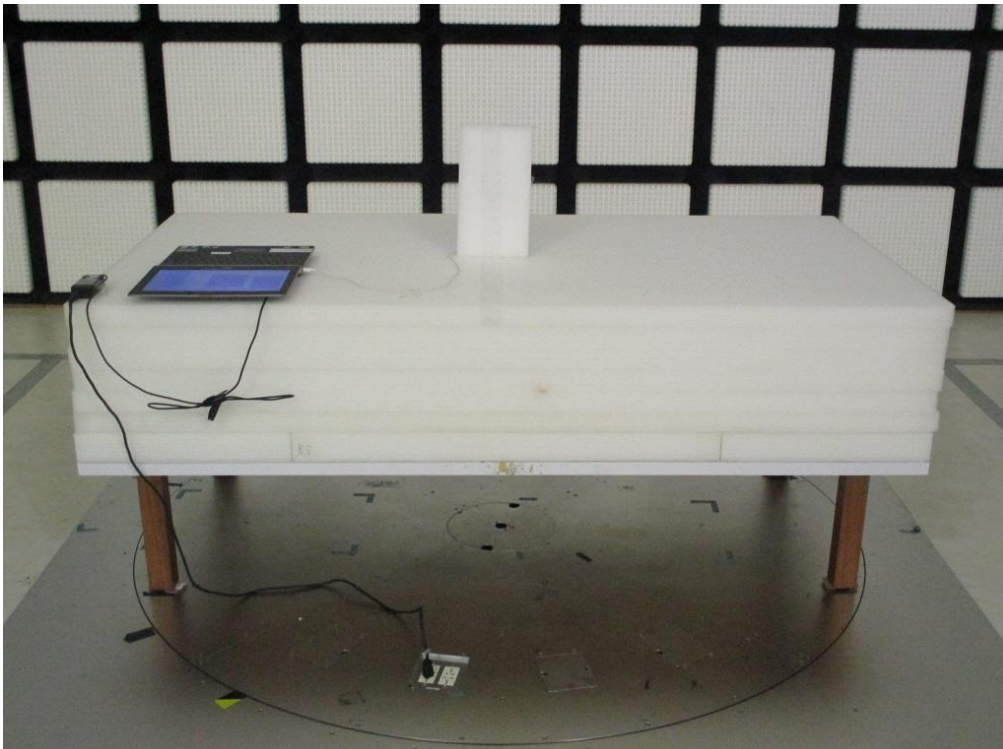


## Conducted Emission Test

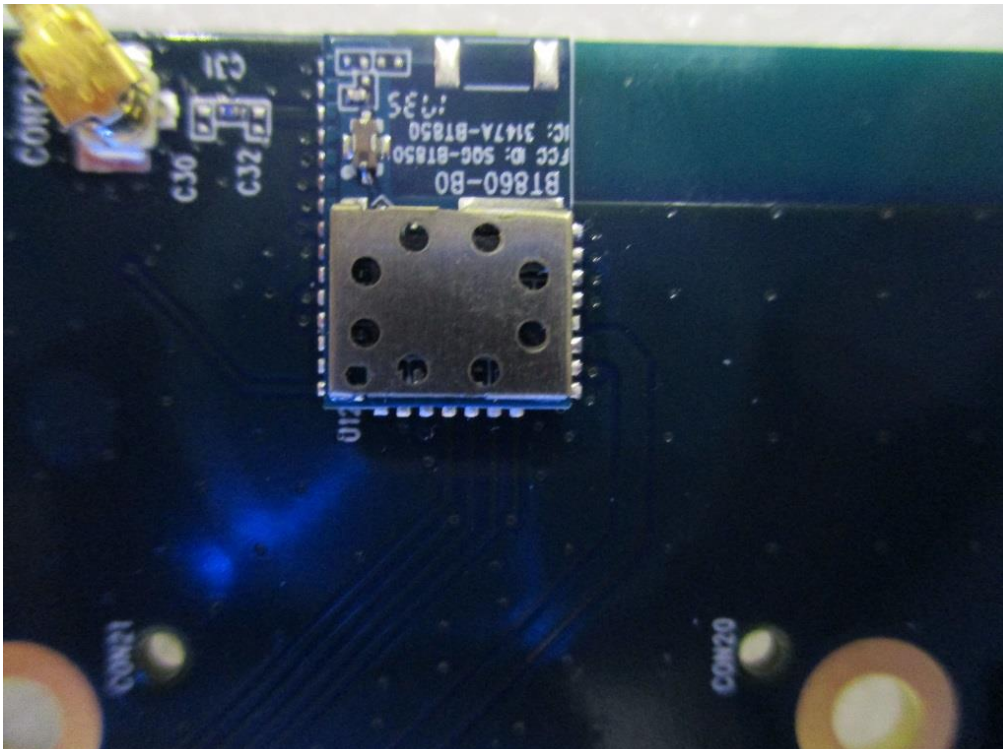


**Configuration 2 : BT850-ST**

**Radiated Emission Below 1GHz Test**

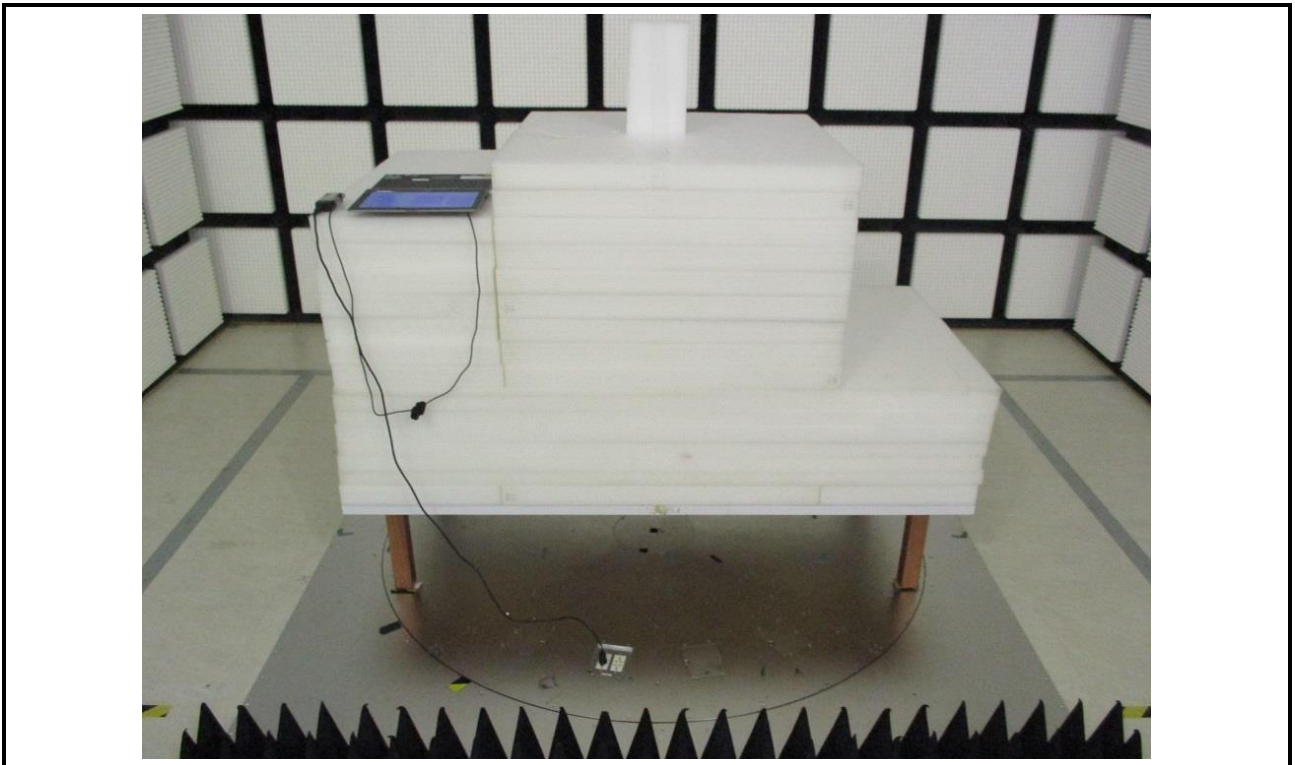
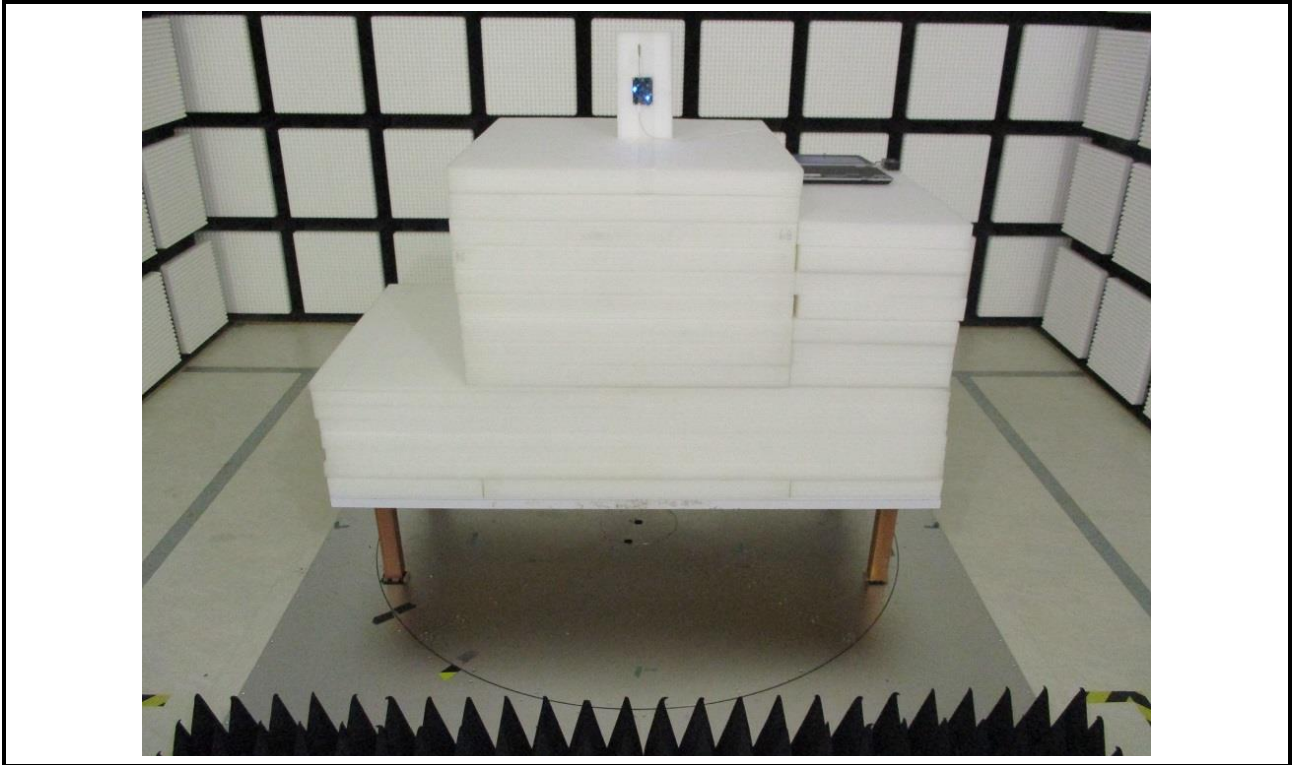


### Radiated Emission Below 1GHz Test

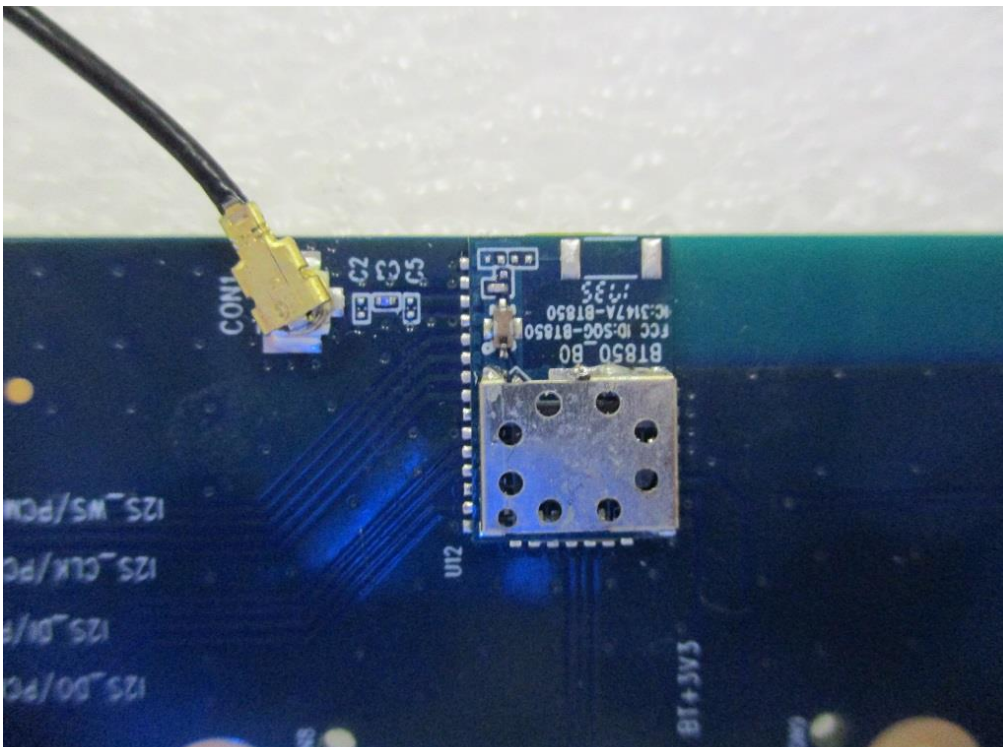
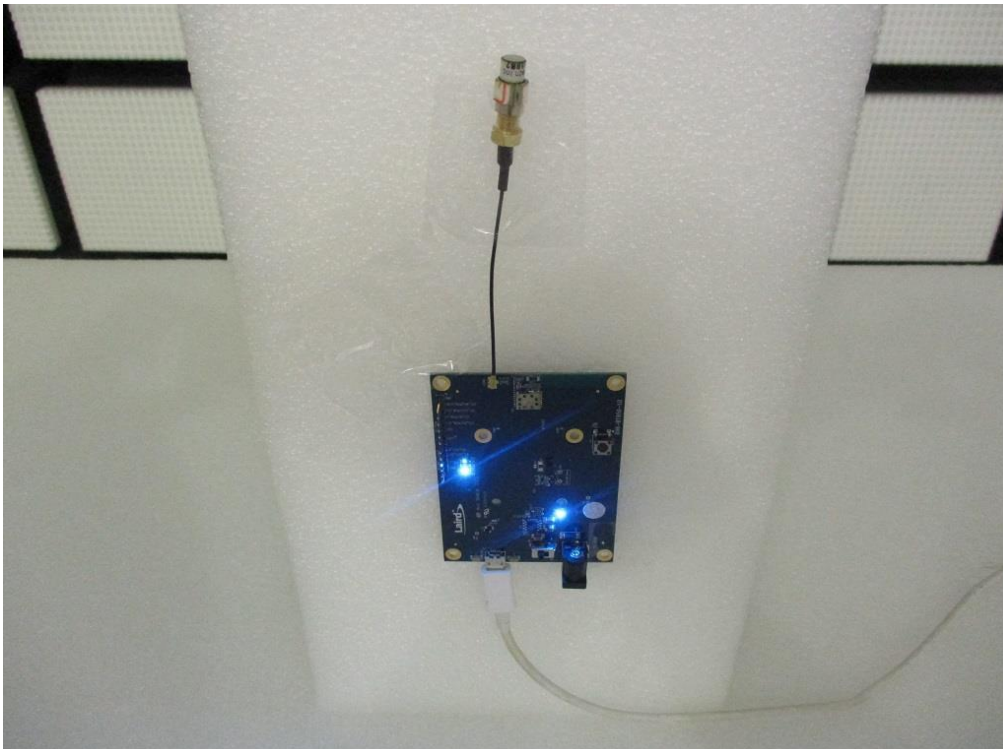




### Radiated Emission Above 1GHz Test

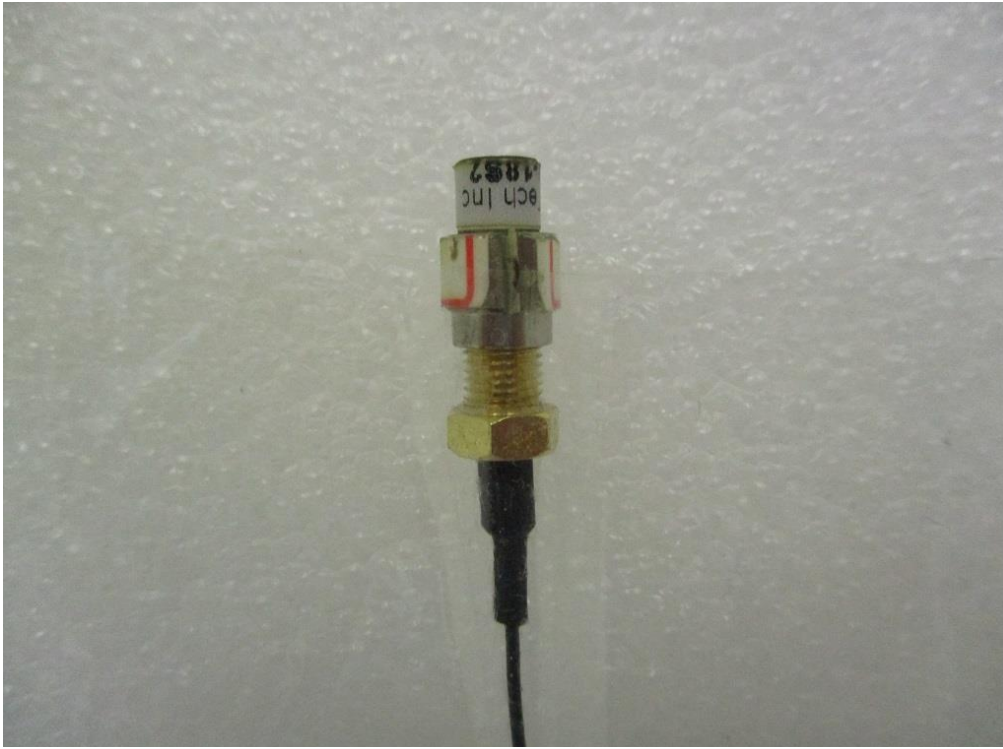


### Radiated Emission Above 1GHz Test



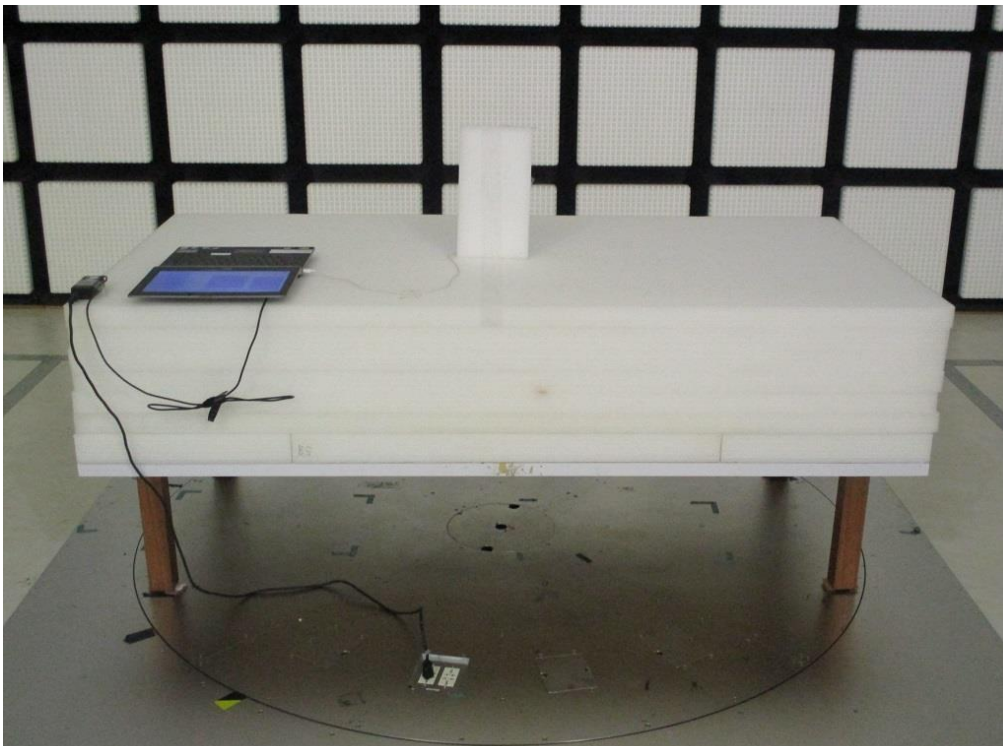


**Radiated Emission Above 1GHz Test**

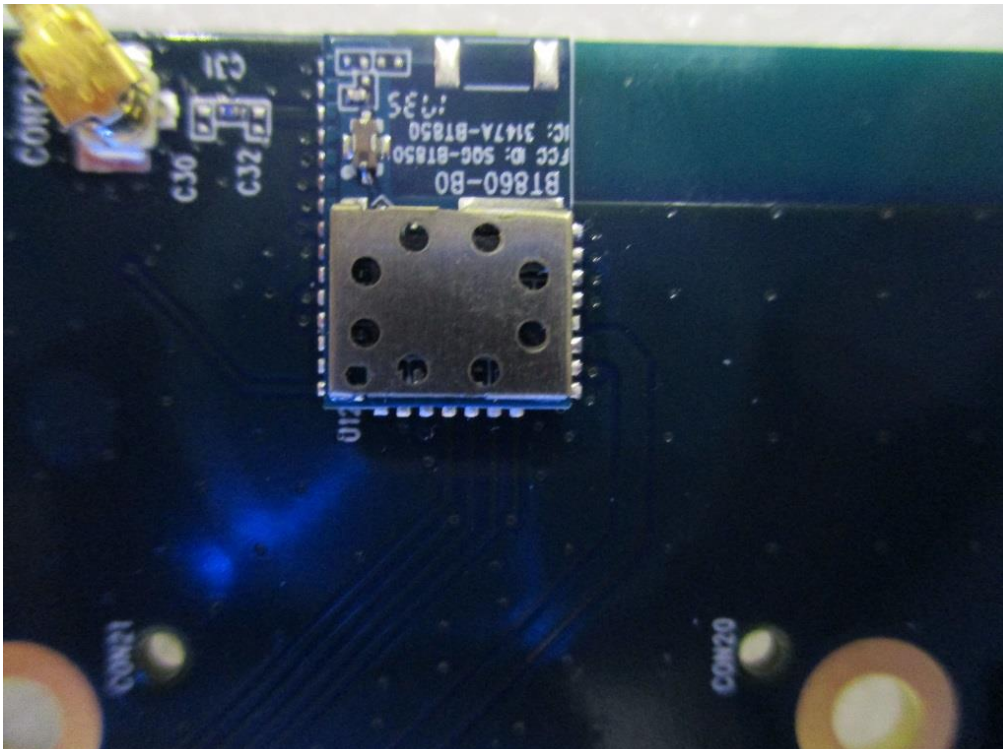


**Configuration 4 : BT860-ST**

**Radiated Emission Below 1GHz Test**

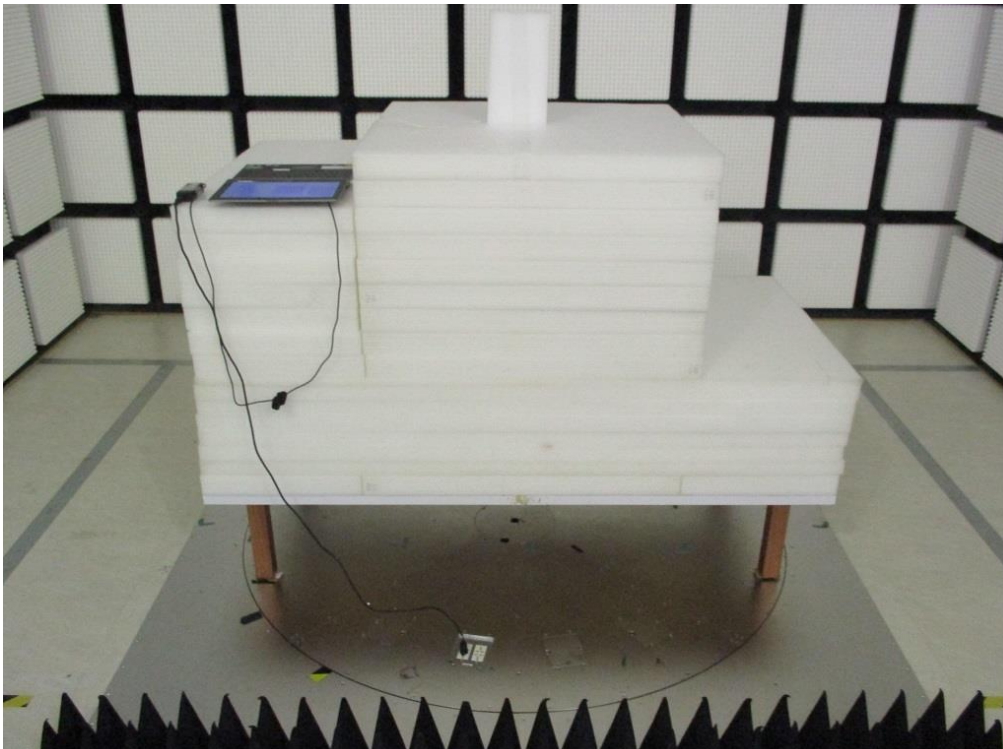
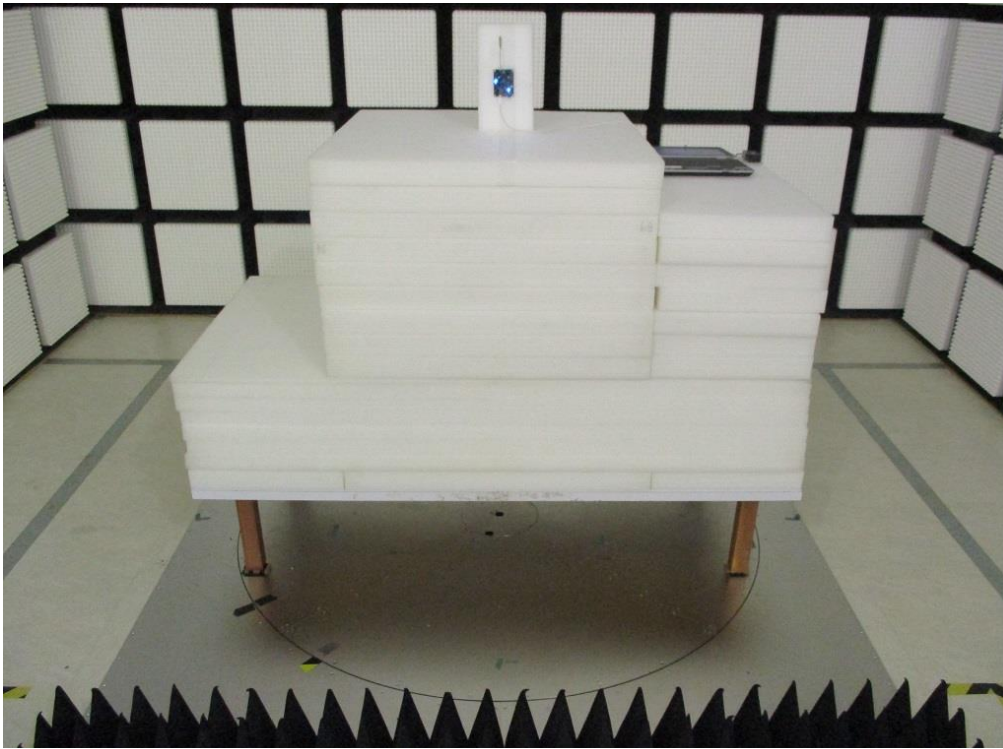


### Radiated Emission Below 1GHz Test

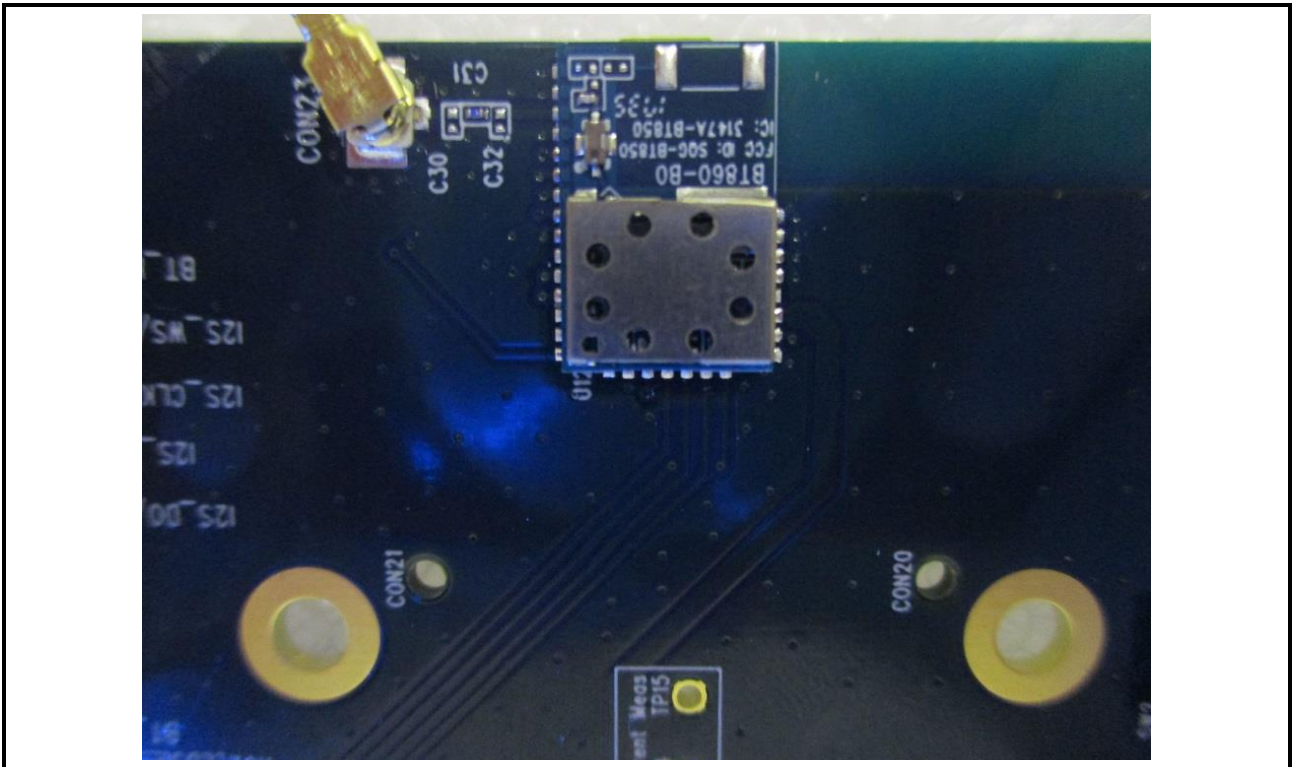
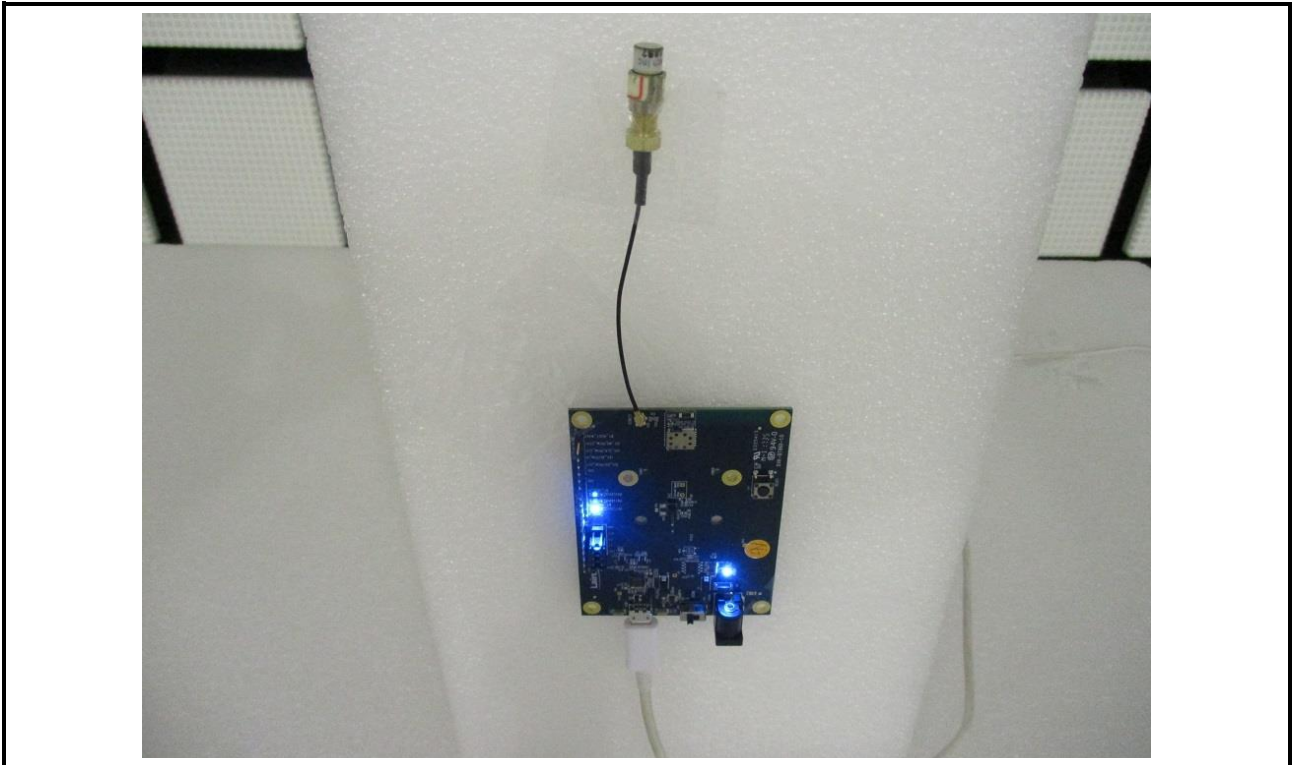




### Radiated Emission Above 1GHz Test



### Radiated Emission Above 1GHz Test



**Radiated Emission Above 1GHz Test**

