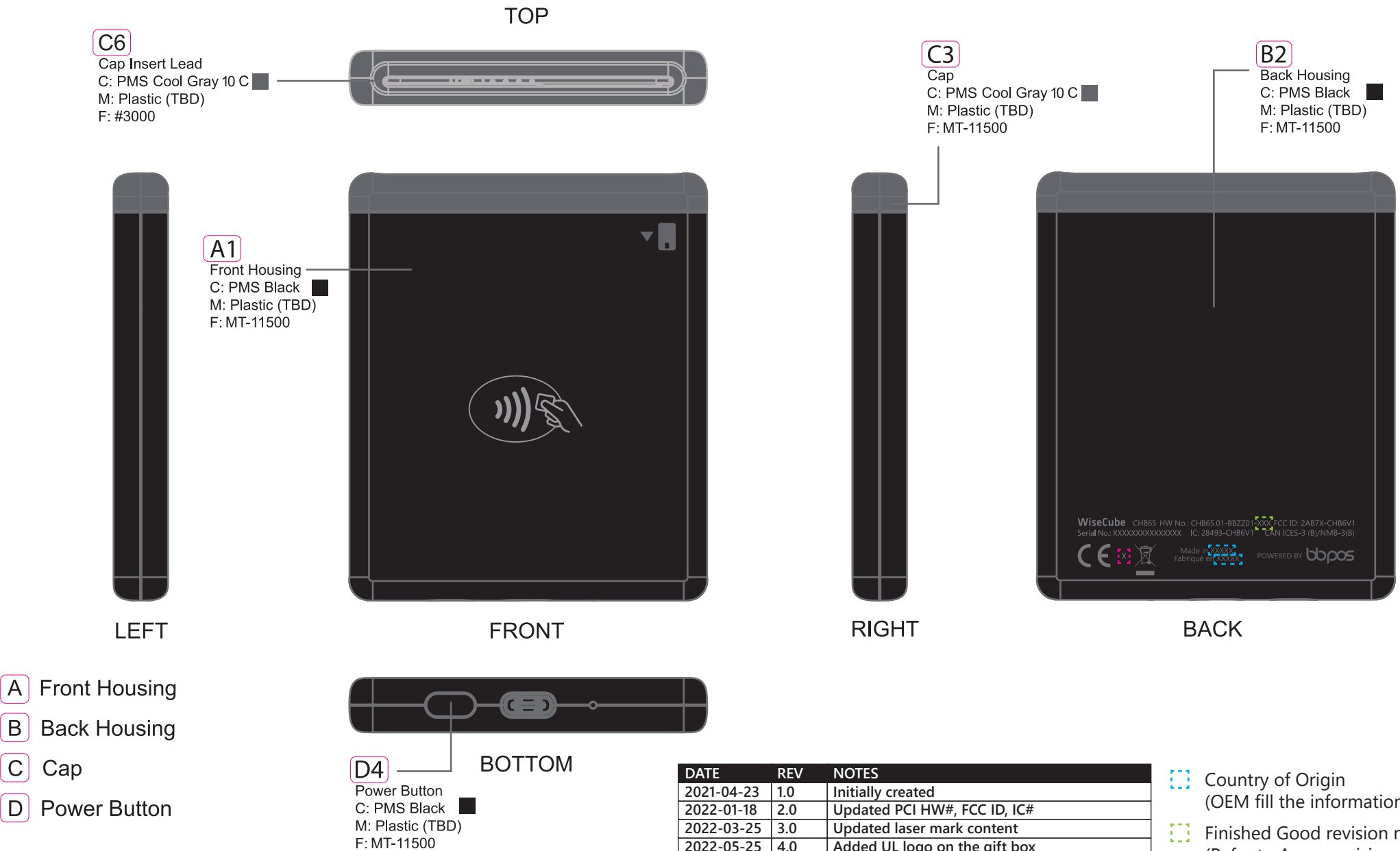


WiseCube (CHB65) - CMF

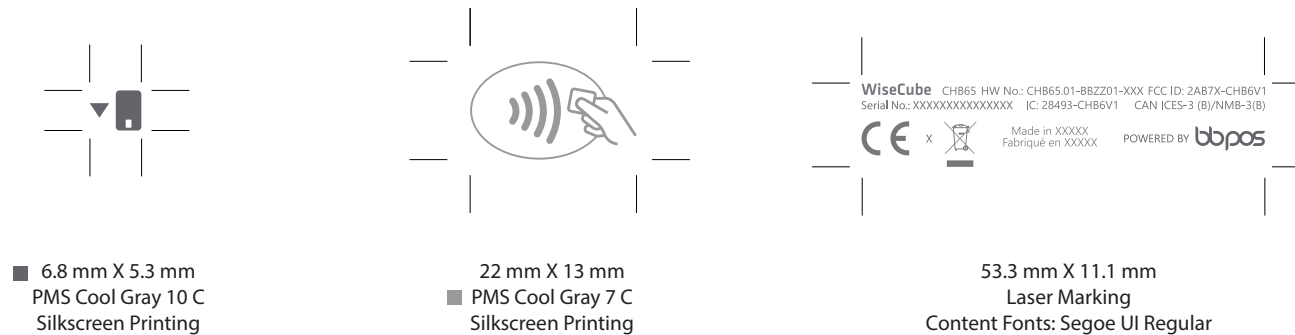
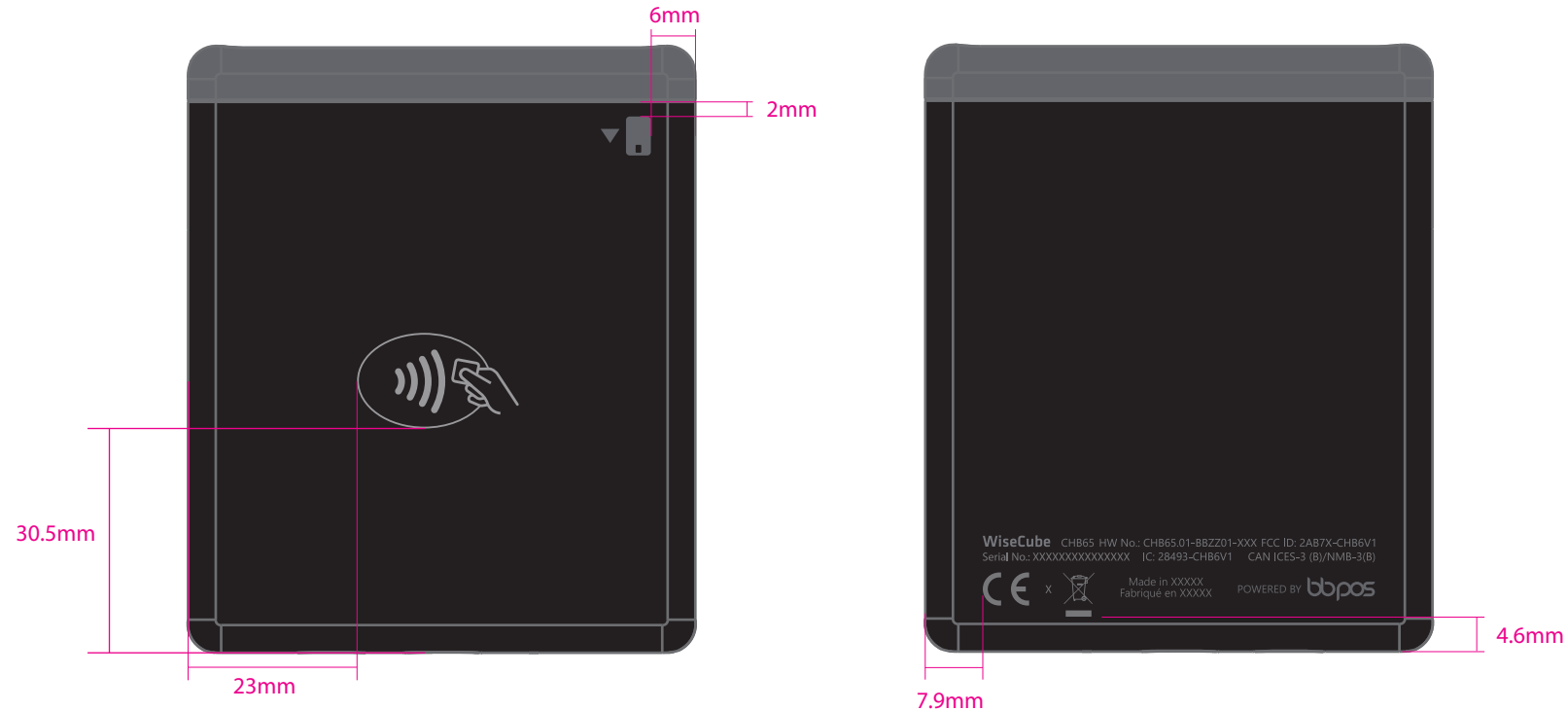
Accessories	Specification
Black USB Type-C Cable x1	1.2m



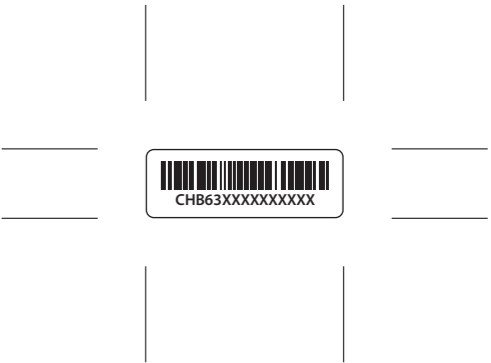
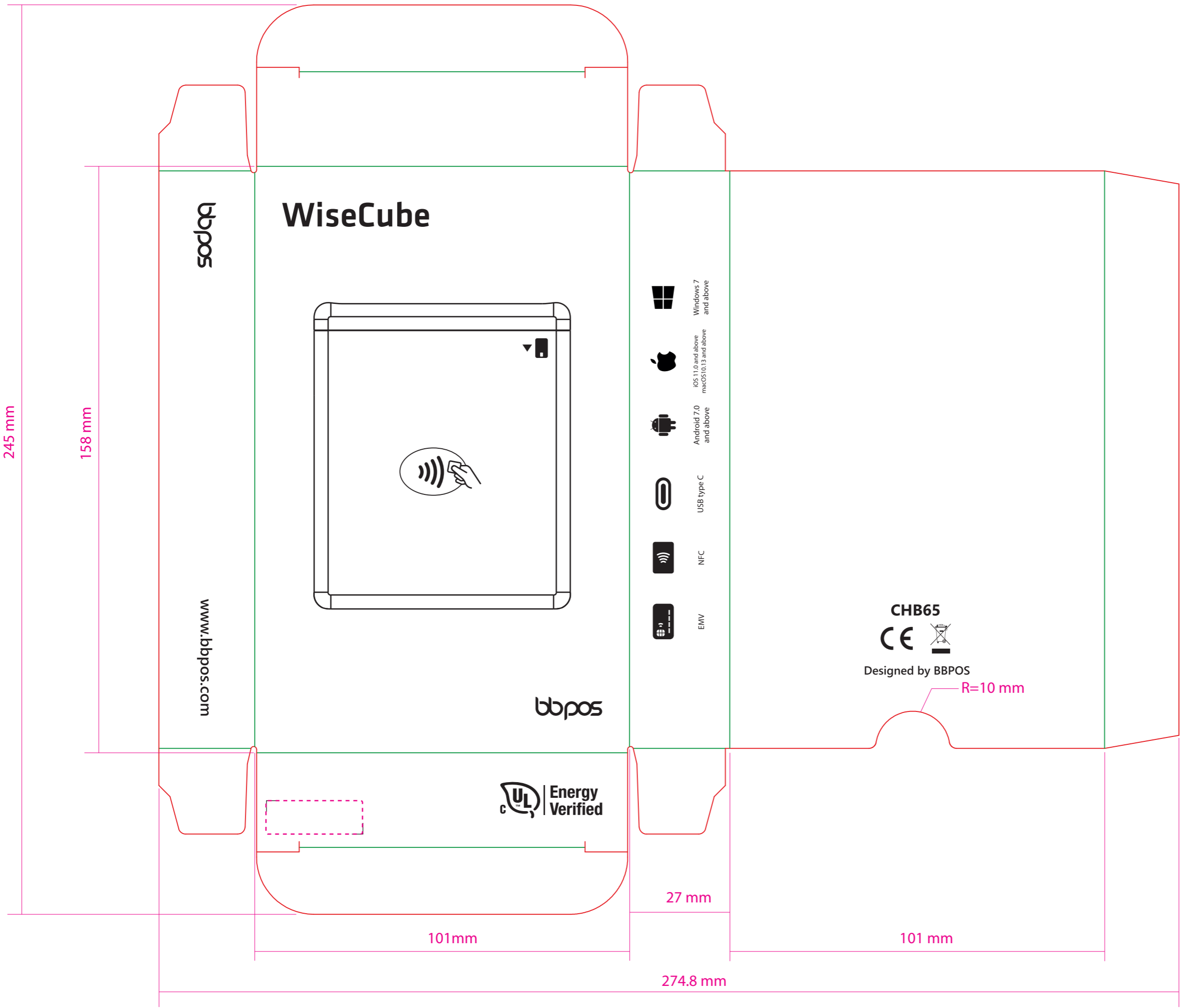
DATE	REV	NOTES
2021-04-23	1.0	Initially created
2022-01-18	2.0	Updated PCI HW#, FCC ID, IC#
2022-03-25	3.0	Updated laser mark content
2022-05-25	4.0	Added UL logo on the gift box
2022-06-06	5.0	Updated IC#

- Country of Origin (OEM fill the information)
- Finished Good revision number (Refer to Arena revision code)
- Hardware version number (Refer to SKU1 rev. version)

# WiseCube (CHB65) - Printing & Label



**DO NOT PRINT MAGENTA LINE!**



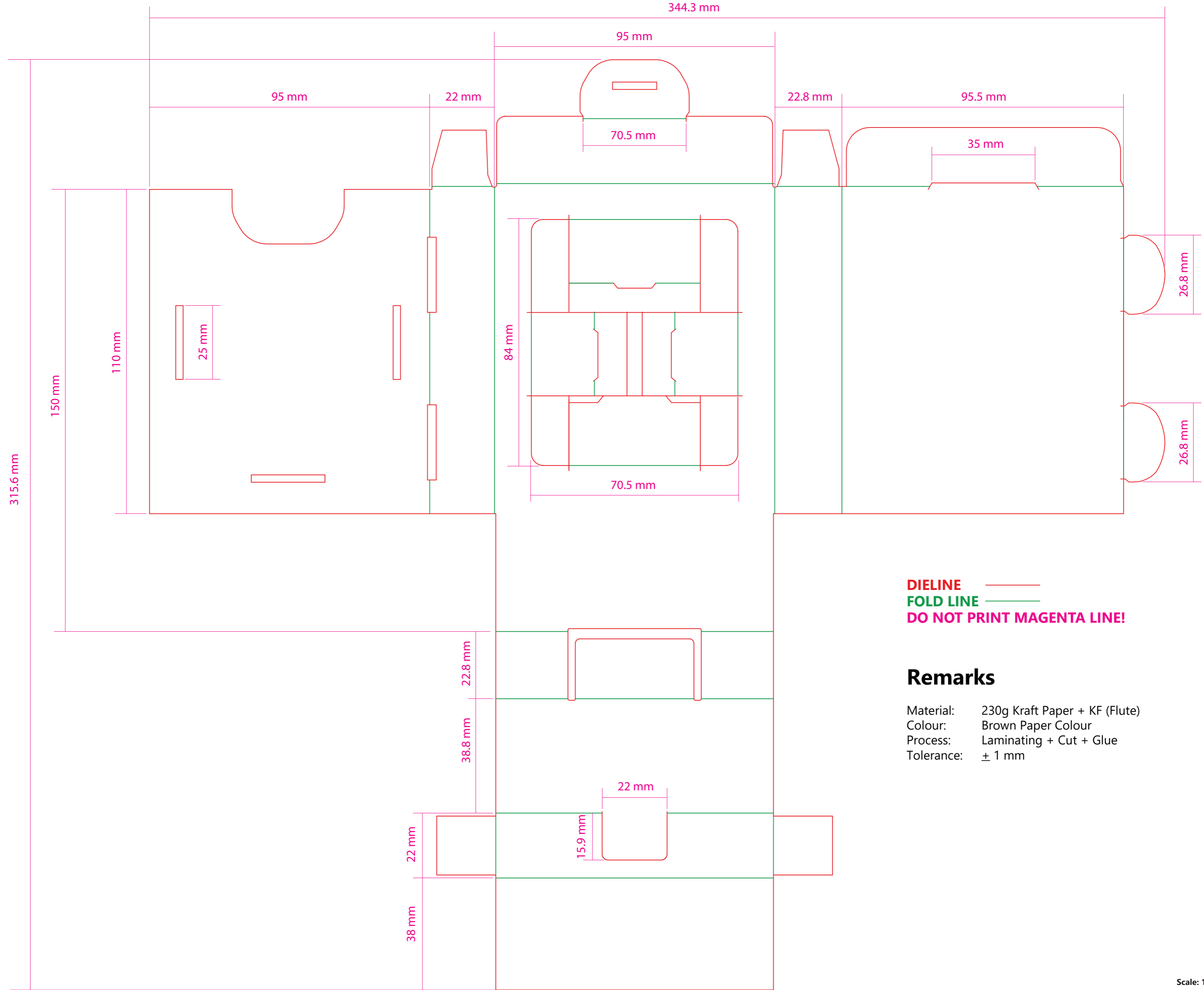
26mm x 9mm, R=1mm  
SN Label  
White PP label  
Content printed in Black  
Fonts: Myriad Pro Semi-bold

**DIELINE** ———  
**FOLD LINE** ———  
**DO NOT PRINT MAGENTA LINE!**

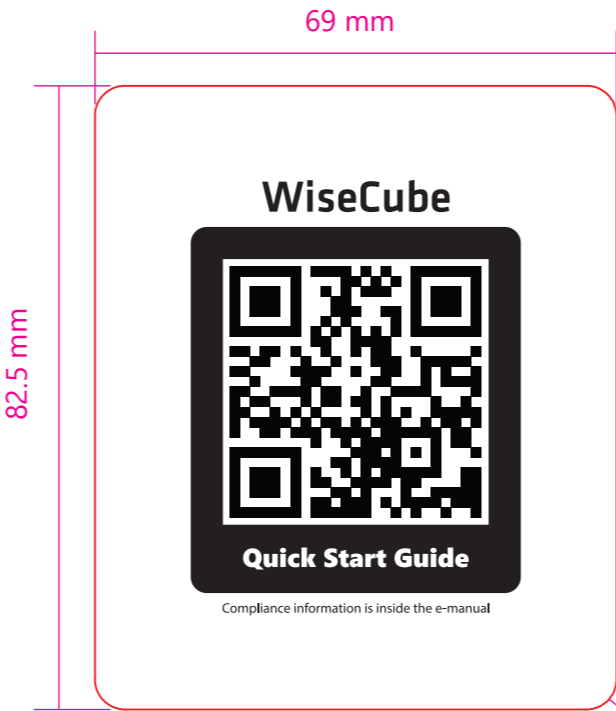
Remarks

Material: 230g Kraft Paper + KF (Flute)  
Colour: Brown Paper Colour  
Varnish: None  
Printing: Black, K=100%  
Tolerance: ± 2 mm

**DO NOT PRINT!!!**  
S/N label area,  
26mm x 9 mm; R=1mm



**DIELINE**  
**DO NOT PRINT MAGENTA LINE!**

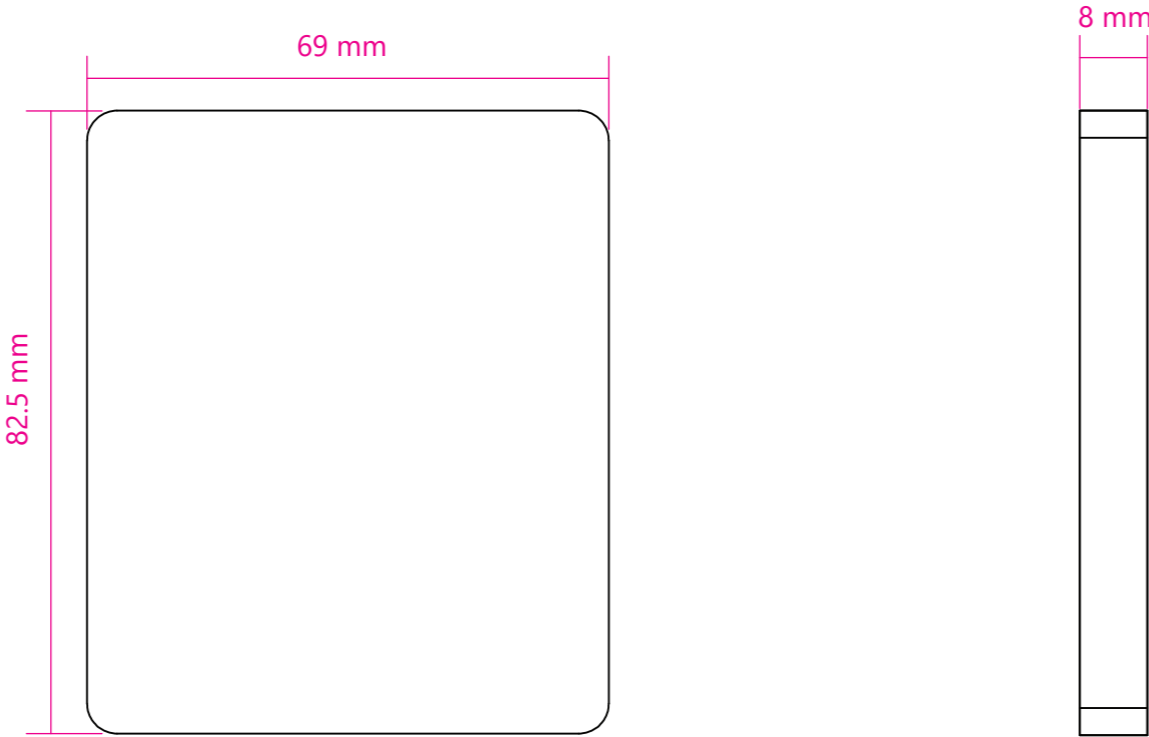


Remarks

- Material: 230g Kraft Paper + KF (Flute)
- Varnish: None
- Colour: Brown Paper Colour
- Printing: Black, K=100%
- Tolerance: ± 0.5mm

4typ 4.0

WiseCube (CHB65) - Foam Board insert



Remarks

Material: EPE, 28 KG/M3  
Color: White  
Tolerance: ± 0.5mm

**\*\*Must be RoHS Compliant**