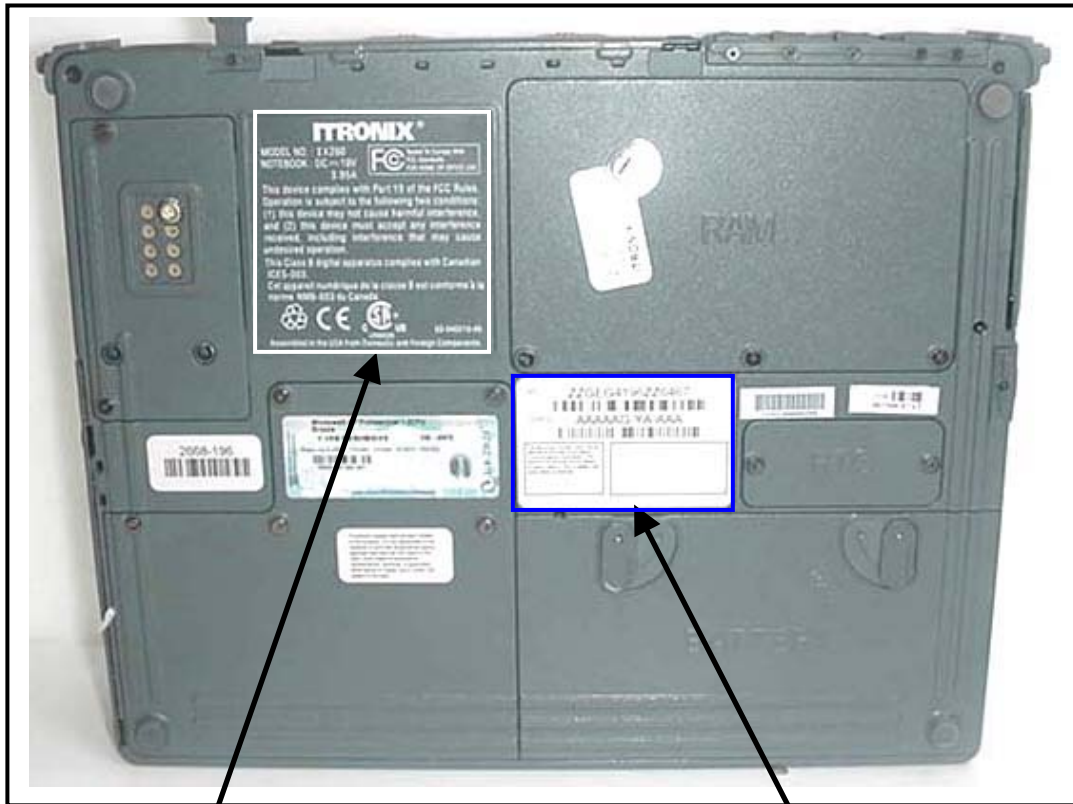


## FCC ID LABEL & LOCATION

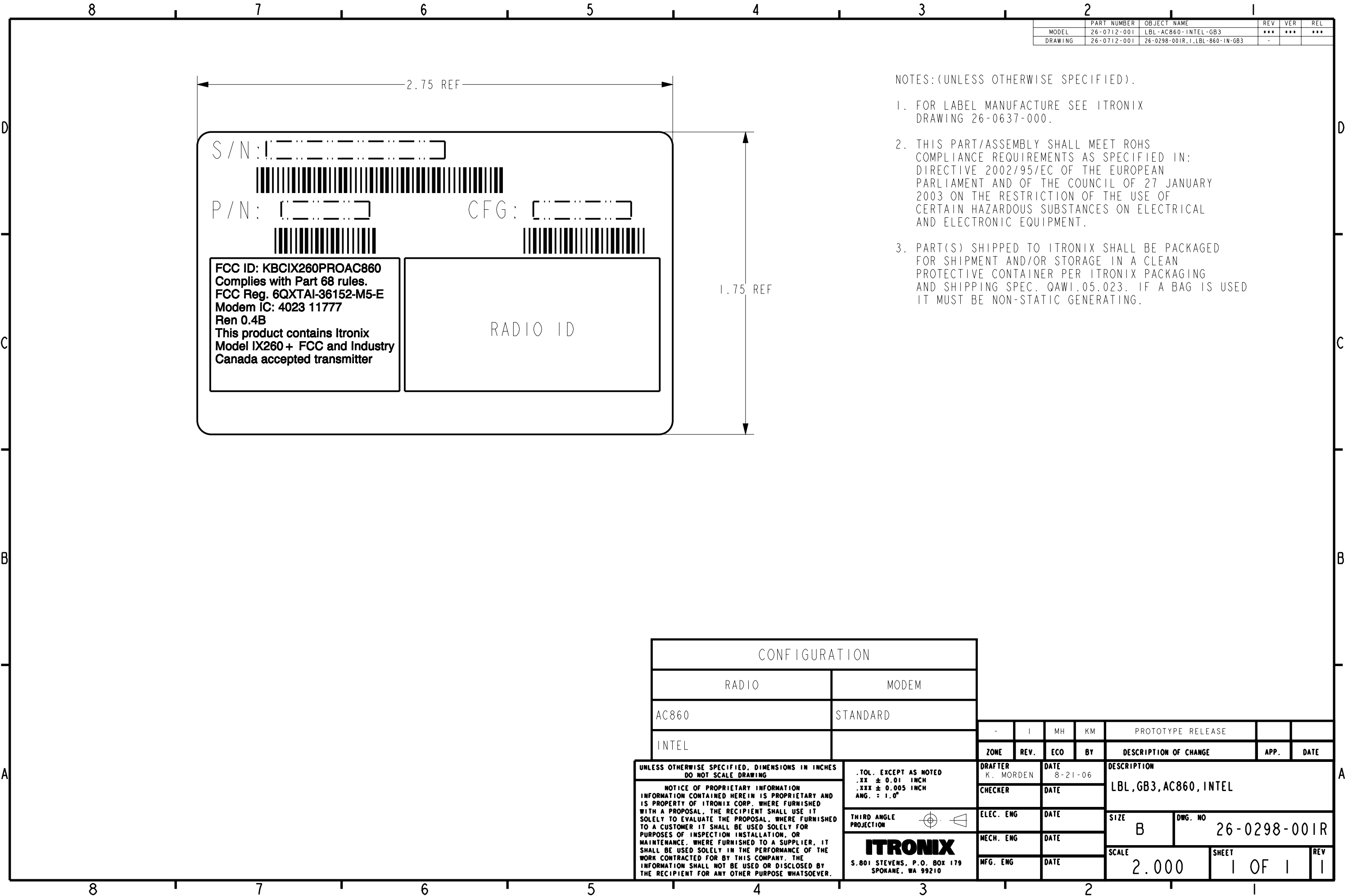
### LABELING REQUIREMENTS PER §2.925

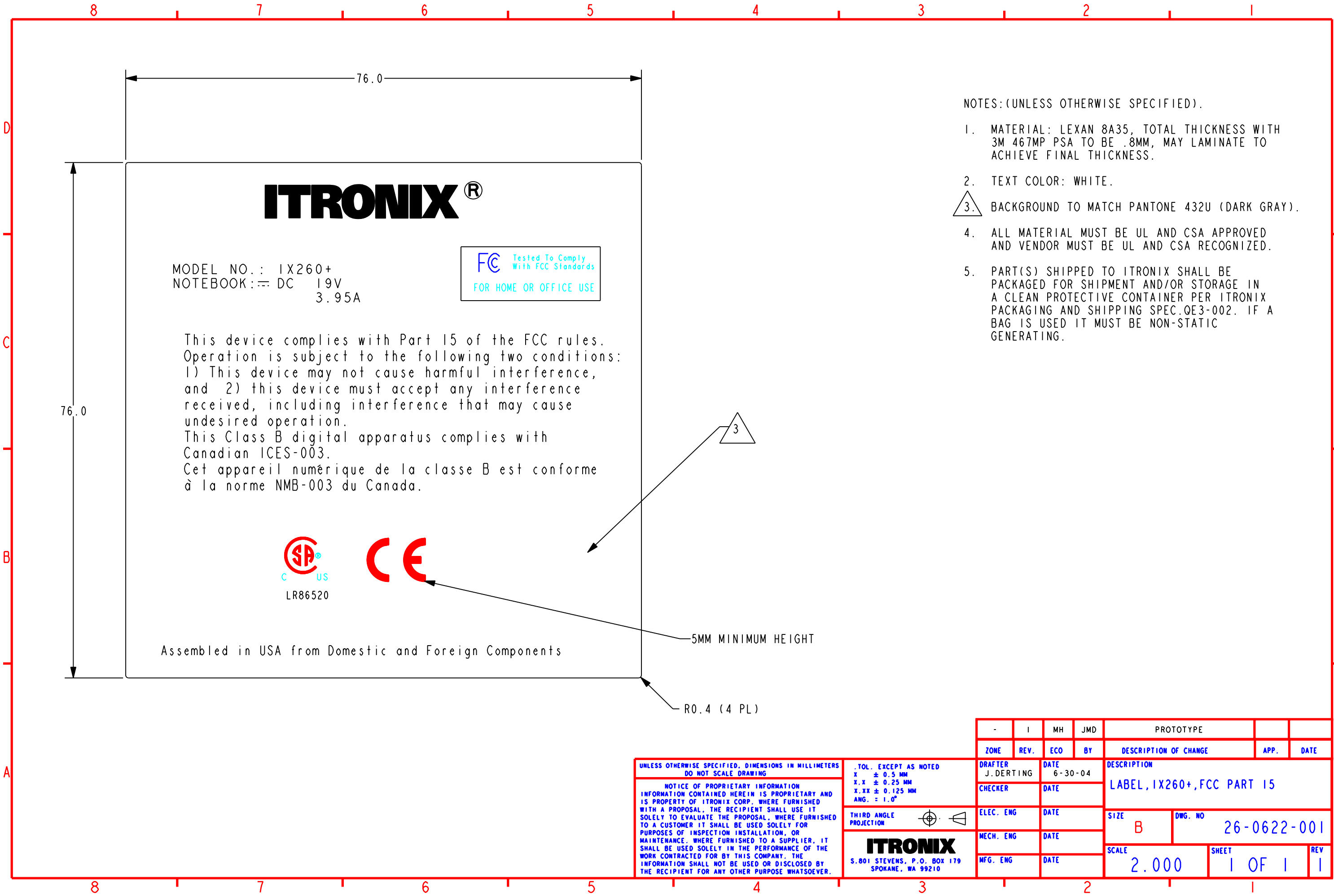
The label(s) shall be permanently affixed at a conspicuous location on the device.



**SEE NEXT PAGE(S) FOR  
FCC Part 15(B) DoC LABEL**

**SEE NEXT PAGE(S)  
FOR FCC ID LABEL**





- NOTES: (UNLESS OTHERWISE SPECIFIED).
- 1. MATERIAL: LEXAN 8A35, TOTAL THICKNESS WITH 3M 467MP PSA TO BE .8MM, MAY LAMINATE TO ACHIEVE FINAL THICKNESS.
  - 2. TEXT COLOR: WHITE.
  - 3. BACKGROUND TO MATCH PANTONE 432U (DARK GRAY).
  - 4. ALL MATERIAL MUST BE UL AND CSA APPROVED AND VENDOR MUST BE UL AND CSA RECOGNIZED.
  - 5. PART(S) SHIPPED TO ITRONIX SHALL BE PACKAGED FOR SHIPMENT AND/OR STORAGE IN A CLEAN PROTECTIVE CONTAINER PER ITRONIX PACKAGING AND SHIPPING SPEC.QE3-002. IF A BAG IS USED IT MUST BE NON-STATIC GENERATING.

UNLESS OTHERWISE SPECIFIED, DIMENSIONS IN MILLIMETERS  
DO NOT SCALE DRAWING

NOTICE OF PROPRIETARY INFORMATION  
INFORMATION CONTAINED HEREIN IS PROPRIETARY AND IS PROPERTY OF ITRONIX CORP. WHERE FURNISHED WITH A PROPOSAL, THE RECIPIENT SHALL USE IT SOLELY TO EVALUATE THE PROPOSAL, WHERE FURNISHED TO A CUSTOMER IT SHALL BE USED SOLELY FOR PURPOSES OF INSPECTION INSTALLATION, OR MAINTENANCE. WHERE FURNISHED TO A SUPPLIER, IT SHALL BE USED SOLELY IN THE PERFORMANCE OF THE WORK CONTRACTED FOR BY THIS COMPANY. THE INFORMATION SHALL NOT BE USED OR DISCLOSED BY THE RECIPIENT FOR ANY OTHER PURPOSE WHATSOEVER.

TOL. EXCEPT AS NOTED  
X ± 0.5 MM  
X.X ± 0.25 MM  
X.XX ± 0.125 MM  
ANG. = 1.0°

THIRD ANGLE PROJECTION

**ITRONIX**  
S.801 STEVENS, P.O. BOX 179  
SPOKANE, WA 99210

-	I	MH	JMD	PROTOTYPE			
ZONE	REV.	ECO	BY	DESCRIPTION OF CHANGE	APP.	DATE	
DRAFTER J. DERTING	DATE 6-30-04	DESCRIPTION LABEL, IX260+, FCC PART 15					
CHECKER	DATE						
ELEC. ENG	DATE	SIZE B	DWG. NO 26-0622-001				
MECH. ENG	DATE	SCALE 2.000		SHEET 1 OF 1	REV 1		
MFG. ENG	DATE						