

BE2022
BELLMAN & SYMFON AB
ENGLISH

BE2022 Maxi Pro TV streamer



About the TV streamer

The Maxi Pro TV streamer enables you to hear the television at a volume that suits you, without affecting the volume for anyone else in the room. It streams the sound in full stereo via Bluetooth to your Maxi Pro personal amplifier.

What's in the box

Along with the TV streamer, the following items are included:

A mini-stereo cable



A mini-stereo-to-RCA adapter



A fiber optic cable

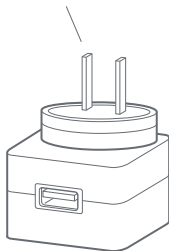


A DC-connector-to-USB cord



A power adapter

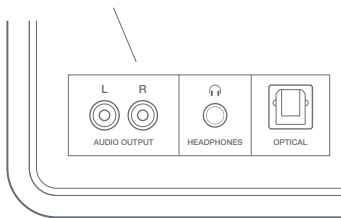
(Your plug may look different)



What you need to get started

To set up your TV streamer, you also need:

A TV with an RCA, headphone or optical audio port



A Maxi Pro personal amplifier



Setting up the TV streamer

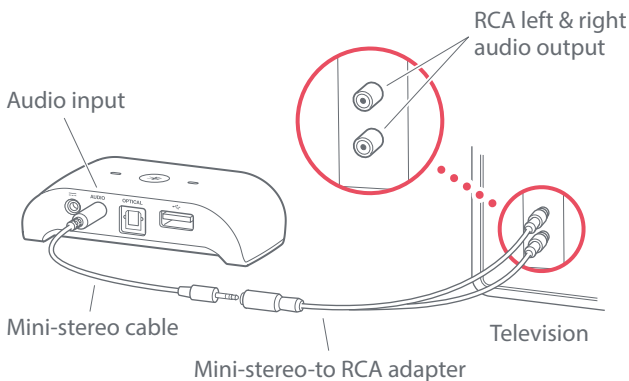
Step 1: Connecting audio

There are several ways to connect the TV streamer to your TV. It depends on what type of audio ports your TV has.

Using the TV's RCA output

- 1 Connect one end of the mini-stereo cable to the audio input on the back of the TV streamer.
- 2 Connect the other end to the mini-stereo-to-RCA adapter.
- 3 Connect the RCA plugs to the audio output on your TV.

Note: You can also connect the mini-stereo cable directly to the headphone output on your TV. Please note that this may mute the speakers on some TV models.

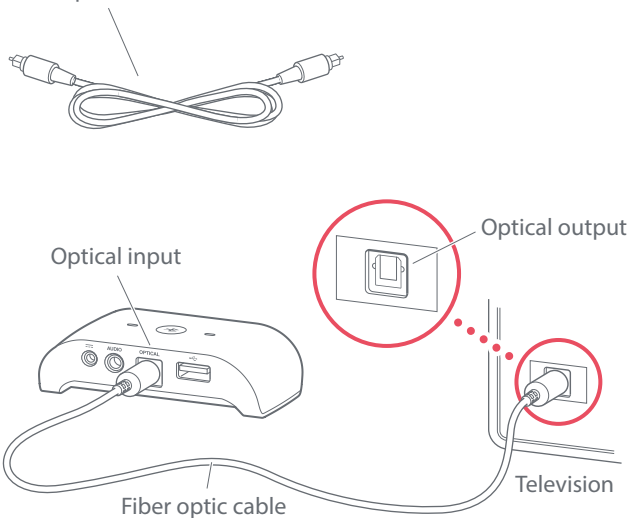


Using the TV's optical output

If your TV features an optical output, you can use the fiber optic cable to connect the TV streamer to your TV. Here is how you connect it:

- 1 Connect one end of the cable to the optical input on the back of the TV streamer.
- 2 Connect the other end to the optical output on your TV.

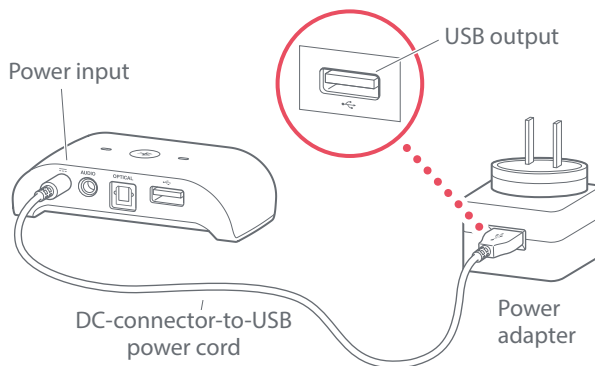
Fiber optic cable



Step 2: Connecting the power cord

- 1 Connect the DC plug to the power input on the back of the TV streamer.
- 2 Connect the USB plug to the power adapter.
- 3 Fit the adapter plug to the power adapter and check that it is properly locked before connecting it to the power outlet. The power indicator on the TV streamer lights up in green.

Note: You can power your TV streamer from your TV by connecting the USB plug directly to a USB output on your TV.



Step 3: Pairing

Note: If the TV streamer came with your Maxi, you don't need to pair the units.

- 1 **On the TV streamer:** Press and hold the Bluetooth button until the Bluetooth indicator starts to blink in blue.
- 2 **On your Maxi:** Press the microphone selector. Press and hold the Bluetooth selector until the Bluetooth indicator starts to blink in blue.
- 3 Both Bluetooth indicators will emit a steady blue light to show that the pairing was successful.

Using your TV streamer

Turning it on

- 1 Press the Bluetooth button to start the TV streamer. The power indicator lights up in green.
- 2 During startup, the TV streamer will automatically reconnect to your Maxi Pro. Both Bluetooth indicators will light up in blue to show that the units are connected.

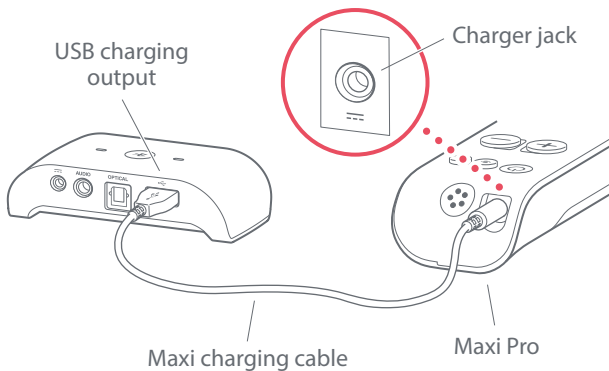
Switching it off

The TV streamer will switch off automatically if no audio signal or Bluetooth connection is detected for 15 minutes.

Charging your Maxi Pro

You can charge your Maxi Pro from the TV streamer.

- 1 Connect the USB end of the Maxi charging cable to the USB charging output on the back of the TV streamer.
- 2 Connect the other end to the Maxi charger jack.
- 3 The Maxi battery indicator blinks in green during charging.



Troubleshooting

If	Try this
Nothing happens when I press the TV streamer Bluetooth button.	<ul style="list-style-type: none">• Make sure that the TV streamer is connected to power, see Connecting the power cord.
I don't hear the sound of the TV in my headphones.	<ul style="list-style-type: none">• Make sure Maxi Pro is within range and paired with your TV streamer, see Pairing.
The TV sound disappears when I connect the mini-stereo cable to the headphones output.	<ul style="list-style-type: none">• This is a feature on some TV models. Use the RCA or optical output on your TV instead, see Connecting audio.

Care and maintenance

Operate the product in a dry environment where the temperature is always between 0° and 35° C.

Clean the product with a soft, lint-free cloth. Avoid getting moisture in openings. Don't use window cleaners, household cleaners, solvents, alcohol, ammonia, or abrasives.

If the product appears to be damaged or doesn't function properly, follow the instructions in this leaflet. If the product still doesn't function as intended, contact your local dealer for information on service and warranty.

European office

Bellman & Symfon AB
Sodra Langebergsgatan 30
436 32 Askim, Sweden
Phone +46 31 68 28 20
E-mail info@bellman.com





Support centers

Europe

Bellman & Symfon AB
Södra Långebergsgatan 30
Askim, Västra Götaland
436 32, Sweden
Call +46 31 7483750
E-mail info@bellman.com

North America

Bellman & Symfon Service Center
1081 West Innovation Drive
Kearney, MO 64060, U.S.A
Call +1 877 720 3401 Toll Free

Germany

Bellman & Symfon Deutschland
Uelzener Str. 14
21335 Lüneburg
Call +49 800 7433338
E-mail info@bellman.de

Asia Pacific

Bellman & Symfon Asia
339 Huanshi Dong Rd
Guangzhou, China, 510095
Call +86 20 8318 2950
E-mail info.cn@bellman.com

BE2022_024WCD002
© and TM 2018 Bellman & Symfon AB. All rights reserved.





Warranty card

ENGLISH



Important safety instructions

This section contains important information about safety, handling, disposal, recycling and warranty.



Note: Read all safety information and instructions before using the product. Keep the user manual for future use.

Warning!

- Failure to follow these safety instructions could result in fire, electric shock, or other injury or damage to the product or other property.
- Do not use or store this product near any heat sources such as naked flames, radiators, ovens or other devices that produce heat.
- Protect the cable from any potential source of damage.
- Use only power adapters and accessories specified in this manual.
- Only refer a damaged or faulty product to qualified service personnel.
- Do not dismantle the product; there is a risk of electric shock. Tampering with or dismantling the product will void warranty.
- This product is designed for indoor use only.
- Do not expose the product to moisture.
- Protect the product from shocks during storage and transport.

Care and cleaning



Note: Failure to follow these care and cleaning instructions could result in damage to the product and void the warranty.

Battery charging and replacement



Warning! The Maxi Pro is powered by a rechargeable lithium-polymer battery. Do not expose the battery to fire or to direct sunlight. The battery should only be charged by Bellman & Symfon or an authorized service center. There is a risk of explosion if the battery is not replaced correctly. The battery should be charged fully before using the product for the first time. Only charge the battery in a temperature between 0°–35°C, 32°–95°F.

Using the product

Operate the product in a dry environment where the temperature is always between 0°–35°C, 32°–95°F. Do not use or store the products near a heat source. If the product gets wet or is exposed to moisture, it should no longer be regarded as reliable and should therefore be replaced.

Cleaning

Use a soft, lint-free cloth. Avoid getting moisture in openings. Don't use window cleaners, household cleaners, aerosol sprays, solvents, alcohol, ammonia, or abrasives.

Service and Warranty

If the product appears to be damaged or doesn't function properly, follow the instructions in this leaflet. If the product still doesn't function as intended, contact your local dealer for information on service and warranty.

Warranty Conditions

Bellman & Symfon guarantees this product for two years from date of purchase against any defects that are due to faulty materials or workmanship. This guarantee only applies to normal conditions of use, and does not include damage resulting from accident, neglect, misuse, unauthorized dismantling, or contamination howsoever caused. This guarantee excludes incidental and consequential damage.

Model, type and classification

The information is available at the back of the product.

Product disposal and recycling information



The symbol to the left means that according to local laws and regulations your product should be disposed of separately from household waste. When this product reaches its end of life, take it to a collection point designated by local authorities.

Battery disposal information



This symbol indicates that the product contains batteries that according to local laws and regulations must be disposed of separately from household waste. Take used batteries to a collection point designated by the authorities.

EU Declaration of conformity



Hereby, Bellman & Symfon AB declares that this wireless device is in compliance with the essential requirements and other relevant provisions of the R&TTE Directive.

A copy of the EU Declaration of Conformity may be consulted at: Bellman & Symfon, Södra Långebergsgatan 30, 436 32 Askim, Sweden.

FCC compliance statement

This device complies with Part 15 of the FCC Rules. Operation is subject to the following two conditions: (1) this device may not cause harmful interference, and (2) this device must accept any interference received, including interference that may cause undesired operation.

Warning: Changes or modifications to this unit not expressly approved by the party responsible for compliance could void the user's authority to operate the equipment.

Note: This equipment has been tested and found to comply with the limits for a Class B digital device, pursuant to Part 15 of the FCC Rules. These limits are designed to provide reasonable protection against harmful interference in a residential installation. This equipment generates, uses and can radiate radio frequency energy and, if not installed and used in accordance with the instructions, may cause harmful interference to radio communications. However, there is no guarantee that interference will not occur in a particular installation. If this equipment does cause harmful interference to radio or television reception, which can be determined by turning the equipment off and on, the user is encouraged to try to correct the interference by one or more of the following measures:

- Reorient or relocate the receiving antenna.
- Increase the separation between the equipment and receiver.
- Connect the equipment into an outlet on a circuit different from that to which the receiver is connected.
- Consult the dealer or an experienced radio/TV technician for help.

Canadian compliance statement

This device complies with Industry Canada licence-exempt RSS standard(s). Operation is subject to the following two conditions: (1) this device may not cause interference, and (2) this device must accept any interference, including interference that may cause undesired operation of the device.

Le présent appareil est conforme aux CNR d'Industrie Canada applicables aux appareils radio exempts de licence. L'exploitation est autorisée aux deux conditions suivantes: (1) l'appareil ne doit pas produire de brouillage, et (2) l'utilisateur de l'appareil doit accepter tout brouillage radioélectrique subi, même si le brouillage est susceptible d'en compromettre le fonctionnement.

This Class B digital apparatus complies with the Canadian ICES-003.

Bluetooth® certified

This device includes a Bluetooth module which has passed the BQB certificate. The Bluetooth word mark and logos are owned by the Bluetooth SIG, Inc., and any use of such marks by Bellman & Symfon is under licenses.



Technical specifications

BE2021 Maxi Pro

Intended Use

Assistive listening device that enhances speech to facilitate listening during conversations, telephone calls and television viewing.

Dimensions and Weight

Size: 140 × 27 × 45 mm, 5.5 × 1.1 × 1.8"

Weight: 127g, 4.3 oz.

Frequency and Coverage

Bluetooth frequency: 2402 – 2480 MHz

Coverage: Up to 25 m, 27.5 yd, free field.

Connectivity: Bluetooth® aptX®-LL

Power Supply

Battery power: 2 × 3.7V 750mAh Li-on

Operating time: Up to 70 h

Power consumption: 18 mA

Connections

Headphones input: 3.5 mm jack

Charger input: 2.5 mm connector, 5V DC, 1000mA

Microphone

Built-in omnidirectional microphone

Output signal

Output level with BE9124:

135dB@1kHz (SPL90)

136dB (HF Ave.SPL90)

Full-on gain: 49dB@1kHz,

Ref. test gain: 49dB@1kHz (SPL70)

Output level with BE9122:

122dB@1kHz (SPL90)

127dB (HF Ave.SPL90)

Full-on gain: 36dB@1kHz,

Ref. test gain: 36dB@1kHz (SPL70)

Output level with BE9125:

136dB@1kHz (SPL90)

133dB (HF Ave.SPL90)

Full-on gain: 43dB@1K,

Ref. test gain: 43dB@1 kHz (SPL70)

Mic SNR:

53dB @1kHz 1%THD (electrical)

Distortion:

0.2% THD@1 kHz -6dB@1% THD (Mic electrical)

Bluetooth SNR:

85dB @1kHz 1%THD (BT with TV streamer)

Freq. range: 20Hz-8kHz (Mic), 20Hz-20kHz (Bluetooth)

Output power: Max 82mW @1kHz/16Ω (THD=1%)

Environmental Requirements

Operating temperature: 0°-35° C, 32°-95° F

Relative humidity: 5% - 95% (non condensing)

Standard accessories

BE9254 Bellman Audio Charger Cable

BE9273 Bellman Audio Universal Charger

Optional accessories

BE9122 Bellman Audio Headphones

BE9124 Bellman Audio Earphones

BE9233 Bellman Audio Headset with Microphone

BE9229 Bellman Audio Earphones with Microphone

BE9125 Bellman Audio Stetoclips

BE9159 Bellman Audio Neck loop

BE9161 Bellman Audio Neck loop

BE9262 Bellman Audio Universal Charger

BE9176 Bellman Audio Universal Charger

BE9139 Bellman Audio Charger Cable

BE2022 Maxi TV streamer

Intended Use

Television streamer device to be used at home in combination with the Maxi Pro assistive listening device for television volume amplification.

Dimensions and Weight

Size: 88 × 24 × 48 mm, 3.5 × 0.9 × 1.9"

Weight: 70 g, 2.5 oz.

Frequency and Coverage

Bluetooth frequency: 2402–2480 MHz

Coverage: Up to 25 m, 27.5 yd, free field.

Connectivity: Bluetooth® aptX®-LL

Power

Power consumption: 31 mA

Connections

Audio input: 3.5 mm jack

Audio input sensitivity @ max 2Vrms: +6 dBV

Optical input: 44.1kHz, 48kHz

Optical input sensitivity: 0 dBFS

Charger input: 2.5 mm connector, 5V DC, 1000mA

Charging output: USB type A

Environmental Requirements

Operating temperature: 0°-35° C, 32°-95° F

Relative humidity: 5% - 95% (non condensing)

Standard accessories

BE9123 Bellman Audio Cable Kit

BE9228 Bellman Audio Optical Cable

BE9254 Bellman Audio Charger Cable

Optional accessories

BE9273 Bellman Audio Universal Charger

BE9262 Bellman Audio Universal Charger

BE9176 Bellman Audio Universal Charger

BE9139 Bellman Audio Charger Cable

