

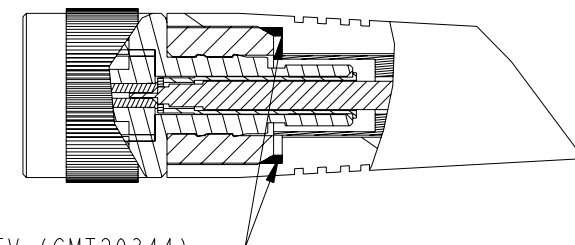
THF (MMP20006) IS APPLY ALL AROUND
TO PREVENT WATER INTRUSION

APPROVED


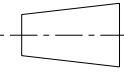
NOTES:

1. SPECIFICATIONS:

GAIN: 2.5db OVER A 1/4 WAVE
PULL TEST: MIN. 20 lbs. LINEAR PULL @ 25°C
OPERATING TEMPERATURE: -40°C TO +85°C
TORQUE TEST: MIN. 20 in-lbs. @ 25°C
POWER RATING: MAX. 50 WATTS
VSWR 2:1 MAX. AT RESONANCE
FREQUENCY: 2.4GHz
ANTENNA TO BE FULFIL RAIN AND SHINE SPEC PROVIDED BY CUSTOMER
LEAK TESTING: LESS THAN 1cc PER MINUTE. TESTED AT 5PSI AND -5PSI
COLOR AT CAP: BLACK



APPLY RTV (CMT20344)
ALL AROUND THIS EDGE

TOLERANCE (UNLESS STATED)	X = ±0.3 XX = ±0.13 ANGULAR = ± 30'	SYM	ECO/DESCRIPTION	DATE	CK	APP	Laird TECHNOLOGIES® ANTENNA SBU PENANG, MALAYSIA		DRAWN BY: TL KHOO CHECKED BY: GJ CHIN	 	
- PRODUCT & PROCESS MUST COMPLY TO LT-GES - MISSING INFORMATION REFER TO 3D DATA - DIMENSIONS ARE IN MILLIMETERS UNLESS STATED OTHERWISE - THIS DRAWING WAS GENERATED VIA PRO/ENGINEER - PRINT NOT TO SCALE							<small>THE INFORMATION CONTAINED IN THIS DOCUMENT IS OF PROPRIETARY NATURE. IT MAY NOT BE REPRODUCED OR USED WITHOUT EXPRESS WRITTEN PERMISSION OF LAIRD TECHNOLOGIES, ANTENNA SBU</small>		DWG. NO.: MAF94432	PG. 1/5	REV 1
							DESCRIPTION: DUCK, EXE 1/4 WAVE RTNM, 2.4G		MATERIAL: N/A		
							© 2008 LAIRD TECHNOLOGIES	PROJECT NO. LTFS022	DATE: 19/12/08	SCALE: NTS	UNITS: MM