

AUTOMATIC PET FEEDER WITH WIFI

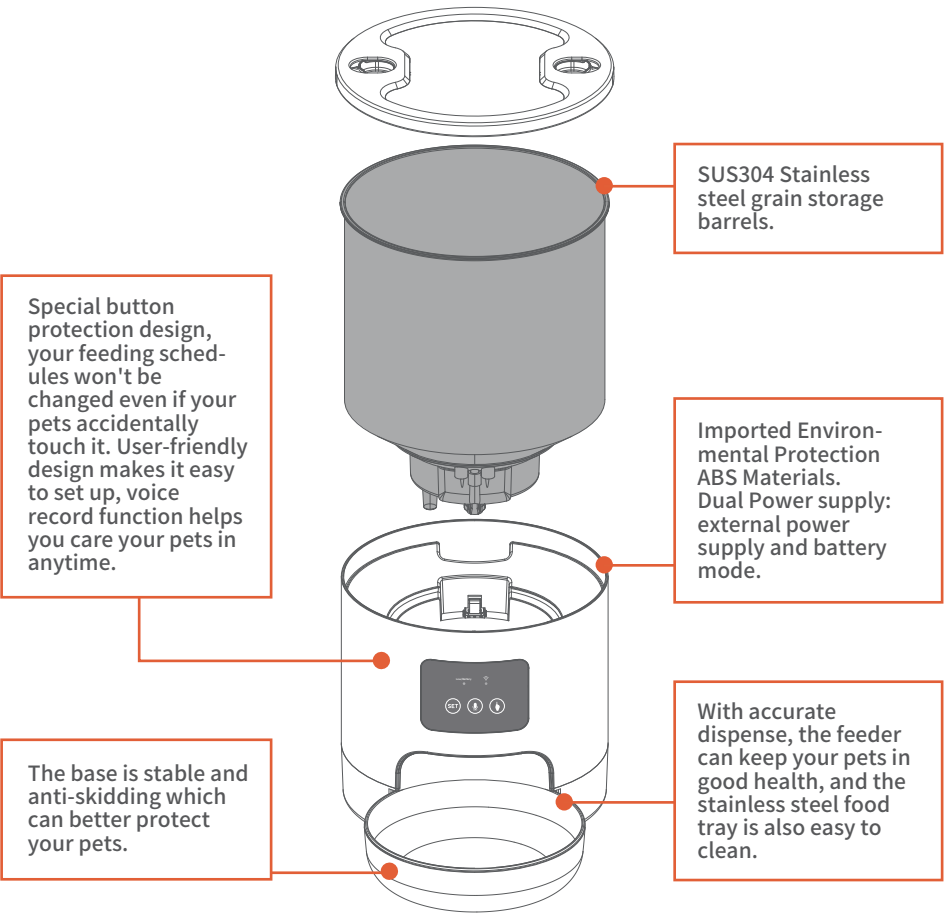
# Manual

Please read carefully before using the product

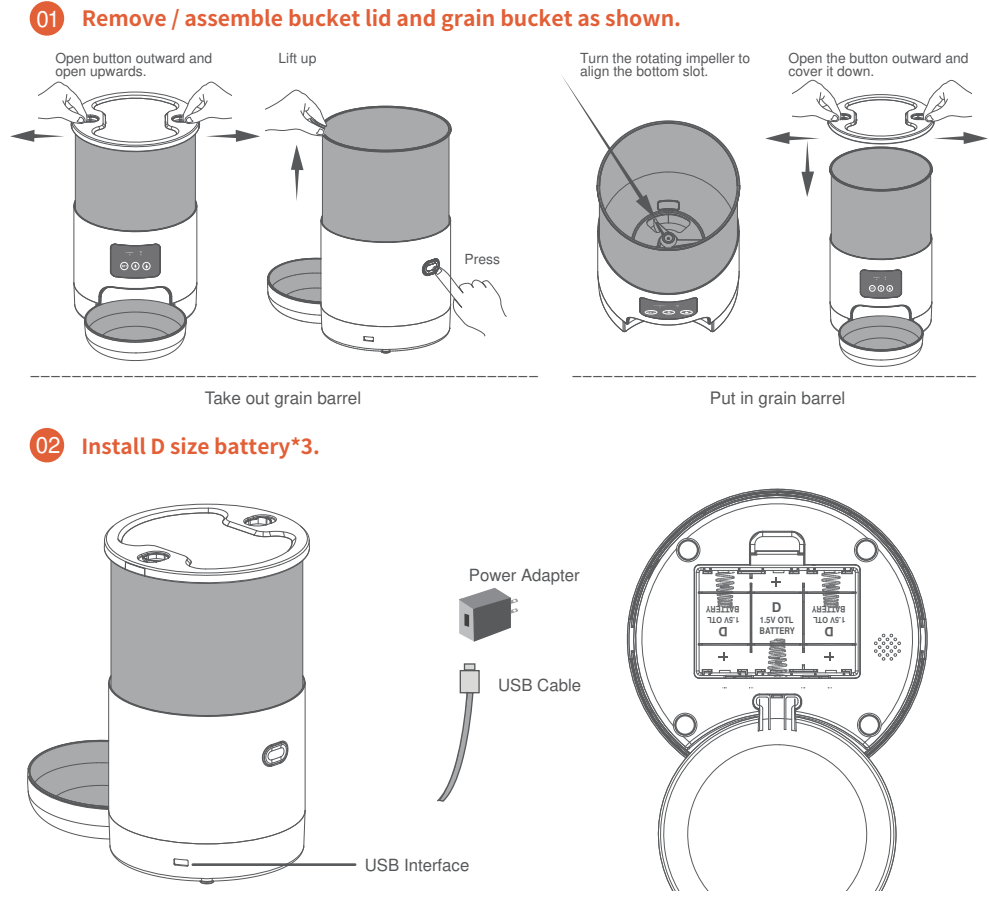


APP

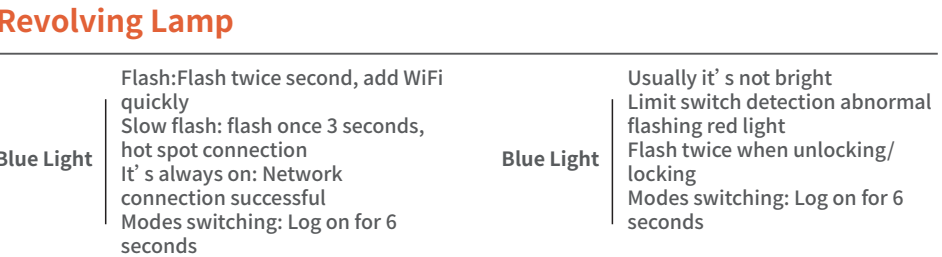
## Features of Automatic Pet Feeder



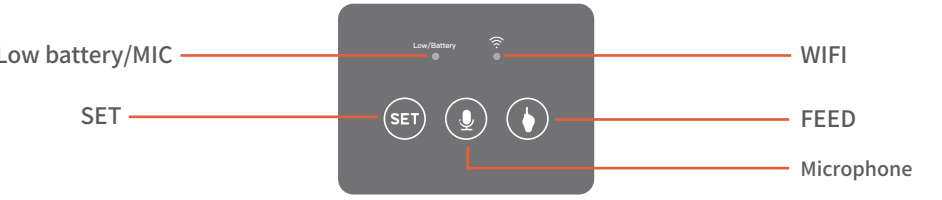
## Assemble and Use



## Function Introduction



## Key Operation



**Microphone Button:** Press and hold the "drop" sound to start recording, release the "two drops" prompt to stop recording. The maximum recording time is 10 seconds.

**SET Key:** When the connection mode is switched/reset, press and hold for 7 seconds to make 3 sounds of "drop, drop, drop", and the red/blue indicator light is on for 6 seconds to switch to slow flashing(hot spot connection mode). After the machine is configured successfully, press and hold it again to send out "drop, drop, drop" sound, and the red/blue indicator light will stay on for 6 seconds, and the equipment will return to the factory settings.

**FEED Key:** Short press to send out 1 portion of food, Press and hold for 10 seconds and the red indicator will flash twice, and the machine will be locked. Press and hold the red indicator light for 10 seconds again to unlock. In the locked state, press and hold the reset key to restore the factory settings, do not press record and FEED Key.

## Bottom battery box

Three NO.1 batteries can be placed as stand by power supply. (When the battery is powered, the feeder only retains the automatic feeding function set by app, and other functions cannot be used.)

## Battery description

1. Use three NO.1 alkaline batteries for power supply. 2. The positive and negative electrodes of the battery refer to the positive and negative signs in the battery compartment. 3. When the battery is low, the feeder should be powered off before replacing with a new battery. 4. The battery must be removed from the feeder before the feeder is discarded. 5. When removing the battery, the feeder must be powered off. 6. According to the relevant national regulations, please place the waste batteries in the special storage point. 7. If the battery is not used for a long time, please take out the battery. In case of leakage, please clean the battery compartment immediately and put the leaking battery in a special storage point.

## How to install food tray

There are two connecting holes on the side of the food plate. Insert the connecting column at the bottom of the body into the connecting holes.

## Recording settings

After the feeder is configured, a recording can be added to the feeder. This recording will be played every time you press the feeding key manually or automatically to remind the pet that the feeding time is up. The specific operation is as follows:

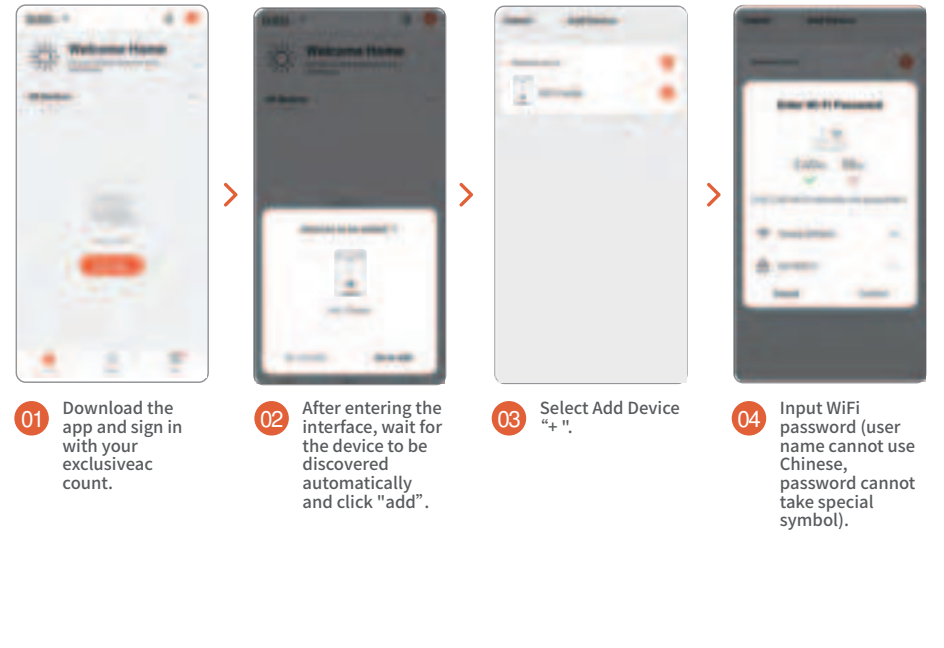
Press and hold the microphone button and start recording. After recording, release the button to send out two "didi" prompts to complete the recording. The recording time is up to 10 seconds. If you are not satisfied, you can repeat this operation to cover the previous recording.

## AP mode configuration (optional)

Please configure according to the diagram in the manual. If the configuration is not successful, please switch to AP mode for configuration. The specific operation process is as follows:

1. In the mode of waiting for connection, the status indicator is flashing rapidly. Press and hold the "reset" key for 7 seconds to give out three sounds of "drop, drop, drop". After letting go, the indicator light will switch to slow flashing, and then enter AP mode.
2. Open the mobile app, select Add Device-Manual add-small household appliances-pet feeder, select other methods-hot distribution network in the upper right corner of the interface, fill in the WiFi password according to the prompt, and then enter the WiFi interface of the mobile phone to connect to a WiFi signal of smartlife XXX.
3. After selecting and connecting the hotspot signal, return to app and wait for the connection to complete.

## WiFi Intelligent Pet Feeder Smart App Specific Operation

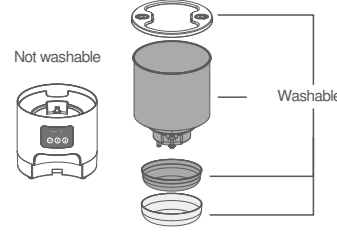


## Simple trouble shooting of pet feeder

- 01** Please check if you can't connect. a): The WiFi name and password should not be in Chinese or more than 12 digits. Please use combination of numbers and letters. 5G WiFi signal is not supported. Please use 2.4G WiFi signal. b): Some community broadband, radio and television broadband, multi-level network or mobile Tietong network, due to network restrictions, the feeder can not connect to the network server, so it is recommended to use Telecom or Unicom Network. c): Some software conflicts in the phone will also cause connection failure. Please restart the phone. Turn off the non mobile system software that starts with the phone, turn on Bluetooth and location, and then try reconnecting to the feeder.
- 02** If the feeding device is inaccurate or not feeding, please check whether there is too much food in the food plate and whether the food channels is blocked. Please clean the food outlet and channels. When using the battery power supply, please check whether the battery is dead and whether the battery leaks.
- 03** The device shows offline. Please check the distance between the device and the router at home. Do not exceed 10 meters. Try not to partition the middle. According to WiFi characteristics, the WiFi signal on the partition wall will drop sharply, resulting in unstable connection offline.
- 04** If there is no response after starting the machine, check whether the power supply is plugged in and whether the power switch is turned on. If they are all plugged in, please check whether the power supply is damaged, contact customer service to buy the power supply or return to the factory for maintenance according to the judgment.

## How to clean the feeder?

This product cannot be placed outdoors or exposed to the rain. Please use a wet cloth to clean it and prevent water from entering the feeder. The food tank and food bowl can be washed by water.



## **FCC warning statements:**

This equipment has been tested and found to comply with the limits for a Class B digital device, pursuant to part 15 of the FCC Rules. These limits are designed to provide reasonable protection against harmful interference in a residential installation. This equipment generates, uses and can radiate radio frequency energy and, if not installed and used in accordance with the instructions, may cause harmful interference to radio communications. However, there is no guarantee that interference will not occur in a particular installation. If this equipment does cause harmful interference to radio or television reception, which can be determined by turning the equipment off and on, the user is encouraged to try to correct the interference by one or more of the following measures:

- Reorient or relocate the receiving antenna.
- Increase the separation between the equipment and receiver.
- Connect the equipment into an outlet on a circuit different from that to which the receiver is connected.
- Consult the dealer or an experienced radio/TV technician for help.

Caution: Any changes or modifications to this device not explicitly approved by manufacturer could void your authority to operate this equipment.

This device complies with part 15 of the FCC Rules. Operation is subject to the following two conditions: (1) This device may not cause harmful interference, and (2) this device must accept any interference received, including interference that may cause undesired operation.

The device has been evaluated to meet general RF exposure requirement This equipment complies with FCC radiation exposure limits set forth for an uncontrolled environment.

This equipment should be installed and operated with minimum distance 20cm between the radiator & your body.