

87654321

FM-602 Rev. F.0

D

C

B

A

LABEL SPECIFICATIONS

BASE MATERIAL:  
4 MIL WHITE VINYL, 3M 7046

OVERLAMINATION:  
1 MIL CLEAR POLYESTER, FM011

ADHESIVE:  
3M 350

OVERALL SIZE:  
3.000 X 1.625

COLORS:

WHITE

BLACK

LABEL OUTLINE (NOT PRINTED)

CONTAINS FCC ID: QQQW32I

CONTAINS IC: 5123A-BGTWT32I

This device complies with Part 15 of the FCC Rules. Operation is subject to the following two conditions: (1) this device may not cause harmful interference, and (2) this device must accept any interference received, including interference that may cause undesired operation.

REVISION HISTORY

ZONE	REV	DESCRIPTION	DATE	BY
-	AA1	INITIAL RELEASE	08-13-20	MSW

NOTES:

1. SUPPLIER TO PROVIDE CERTIFICATION THAT PART IS COMPLIANT TO REGULATED SUBSTANCES PER ES-0604 WITH PPAP SUBMISSION.

2. SUPPLIER TO PROVIDE CERTIFICATION THAT PART IS ROHS COMPLIANT PER ES-0520 WITH PPAP SUBMISSION.

3. GRAPHICS NOT DIMENSIONED ARE DEFINED BY THE ASSOCIATED ELECTRONIC DATA.

4. LABEL MAY BE SUPPLIED IN EITHER TAB OR ROLL FORM BUT MUST BE IDENTIFIED WITH THE STRYKER PART NUMBER AND CURRENT REVISION.VERSION LEVEL. IF SUPPLIED AS AN INDIVIDUAL COMPONENT THE PART NUMBER MAY BE PRINTED ON EITHER A QUICK DETACH TAB, OR THE SCRAP AREA OF THE LABEL. THE LOCATION OF THE TAB AROUND THE PERIMETER OF THE LABEL IS AT THE SUPPLIERS DISCRETION. FOR ROLL SUPPLIED LABELS THE PART NUMBER AND REVISION.VERSION MAY BE PRINTED ON THE ROLL CORE. REVISION.VERSION LEVEL MUST BE UPDATED ON THE TAB, CORE, OR SCRAP AREA WITH EACH REVISION CHANGE.

DO NOT SCALE FROM DRAWING

CRITICAL QUALITY ATTRIBUTES

▽ CQA

△ MINOR sCQA

◇ MAJOR sCQA

◆ CRITICAL sCQA

TOLERANCES

X.XX - ± .03

X.XXX - ± .010

ANGLE - ± 1°

THIRD ANGLE PROJECTION

DRAWING BASED ON ASME Y14.5M- 1994

REQUIREMENTS FOR FINISHED PART UNLESS OTHERWISE SPECIFIED

- DIMENSIONS SHOWN ARE IN INCHES AND ARE FOR INSPECTION PURPOSES ONLY.

THIS DRAWING CONTAINS CONFIDENTIAL INFORMATION AND IS ISSUED IN CONFIDENCE ON CONDITION THAT IT WILL BE RETURNED ON DEMAND AND NOT COPIED, REPRODUCED, DISCLOSED TO OTHERS OR USED IN THE MANUFACTURE OF THE SUBJECT MATTER THEREOF WITHOUT THE WRITTEN CONSENT OF THE STRYKER CORPORATION.

stryker

3800 E. Centre Ave. Portage, MI 49002

TITLE

BLUETOOTH LABEL, US CONFIGURATION

SIZE

B

PART NUMBER:

300900380012

SHEET:

1 OF 1

REV.

AA.0

87654321

4

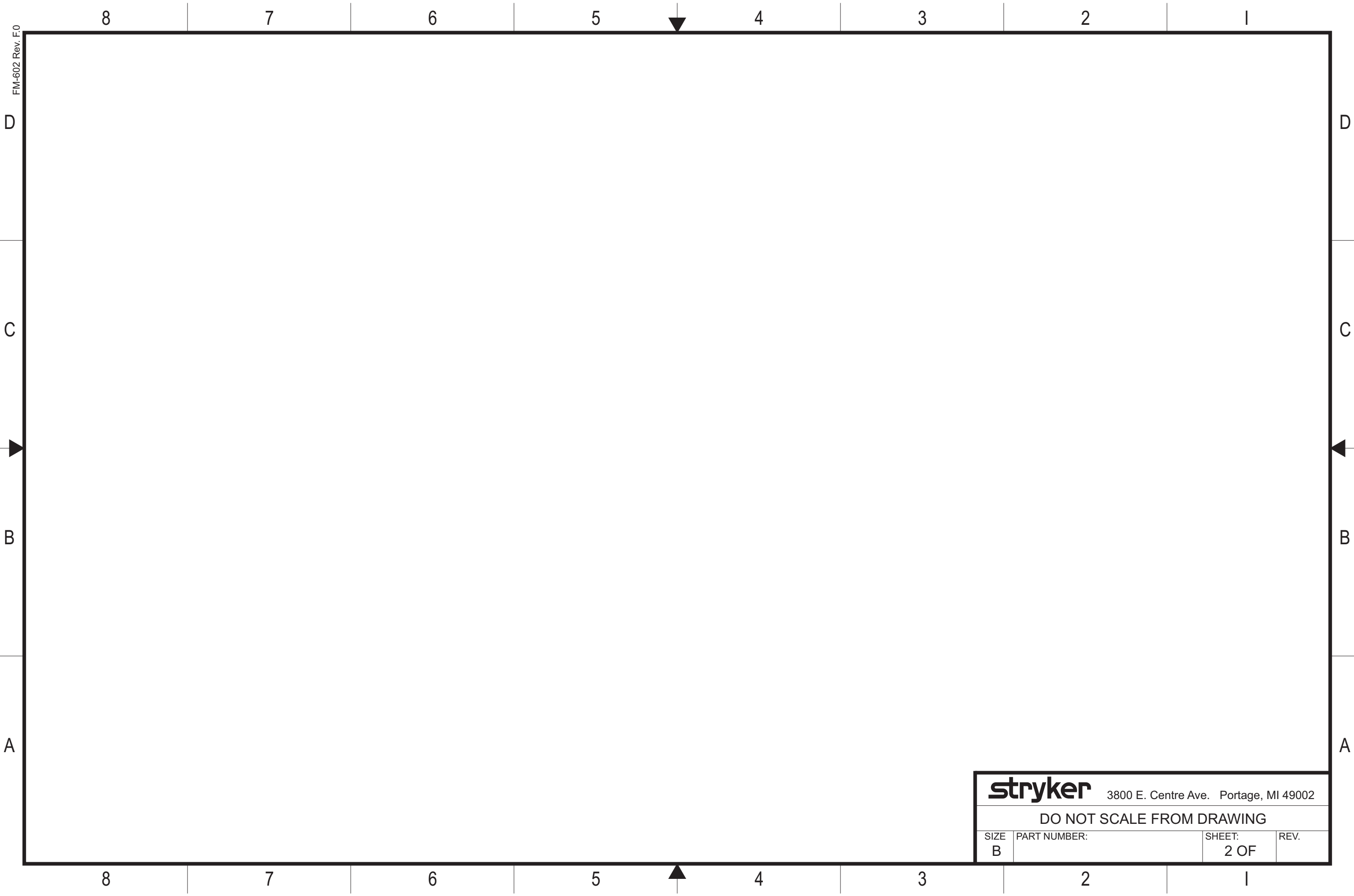
3

2

1

NOT FOR PRODUCTION

FM-602 Rev. F.0



<b>stryker</b>			
3800 E. Centre Ave. Portage, MI 49002			
DO NOT SCALE FROM DRAWING			
SIZE B	PART NUMBER:	SHEET: 2 OF	REV.