

Evaluation boards with STM32MP157 MPUs

Introduction

The **STM32MP157C-EV1** and **STM32MP157A-EV1** Evaluation boards (STM32MP157x-EV1) are designed as complete demonstration and development platforms for STMicroelectronics Arm®-based dual -A7 32 bits and Cortex®-M4 32 bits MPUs in the STM32MP1 Series. They leverage the capabilities of STM32MP1 Series microprocessors for the user to develop applications, using STM32 MPU OpenSTLinux Distribution software for the main processor, and **STM32CubeMP1** software for the co-processor. They include an ST-LINK embedded debug tool, LEDs, push-buttons, one joystick, 1-Gbps Ethernet, CAN FD, one USB OTG Micro-AB connector, four USB Host Type-A connectors, LCD display with touch panel, camera, stereo headset jack with analog microphone input, four digital microphones, one SPDIF Rx/Tx, Smartcard, microSD™ card, and eMMC, NOR and NAND Flash memories.

STM32MP157x-EV1, shown in [Figure 1](#) and [Figure 2](#), is used as the reference design for user application development, although it is not considered as final application.

To expand the functionality of the **STM32MP157C-EV1** and **STM32MP157A-EV1** Evaluation boards, two GPIO expansion connectors are also available for motor control and Raspberry Pi® shields.

An ST-LINK/V2-1 is integrated on the board, as embedded in-circuit debugger and programmer for the STM32 MPU and the USB Virtual COM port bridge.

Figure 1. STM32MP157x-EV1 top view

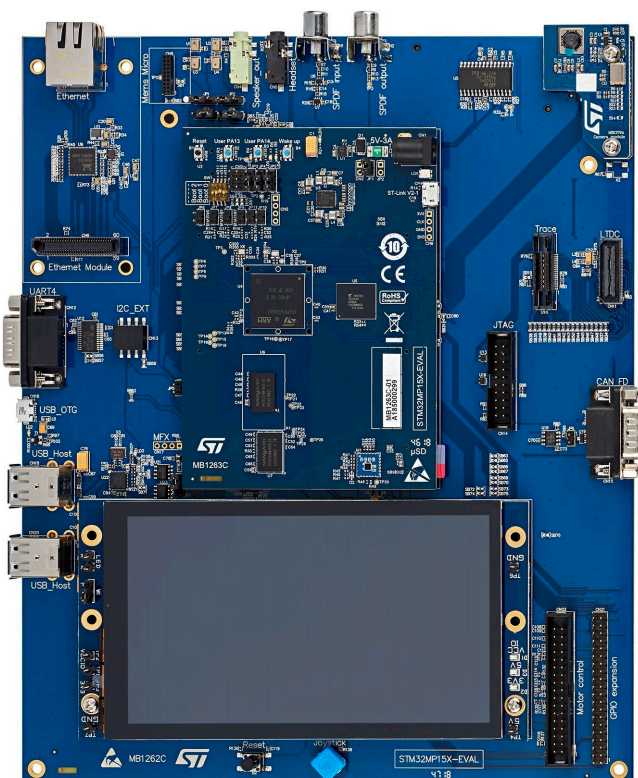
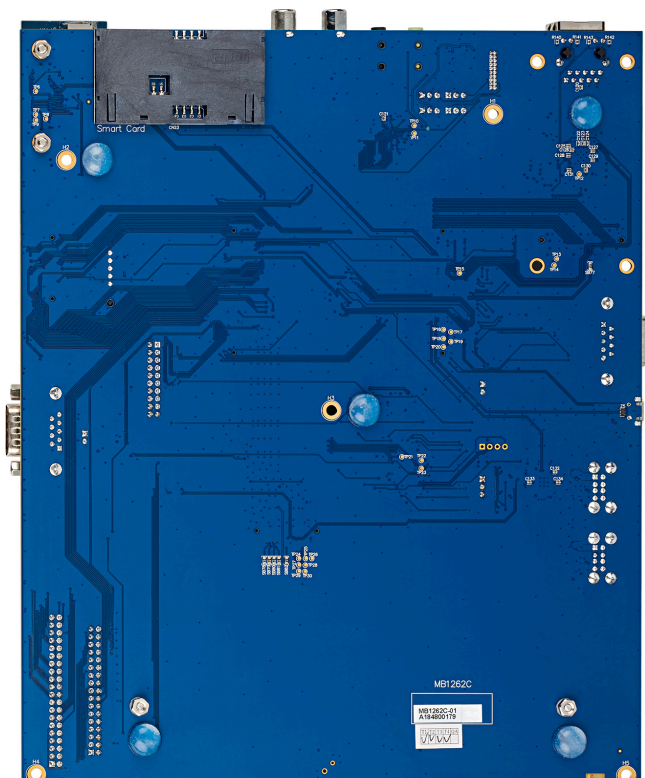


Figure 2. STM32MP157x-EV1 bottom view



Pictures are not contractual.