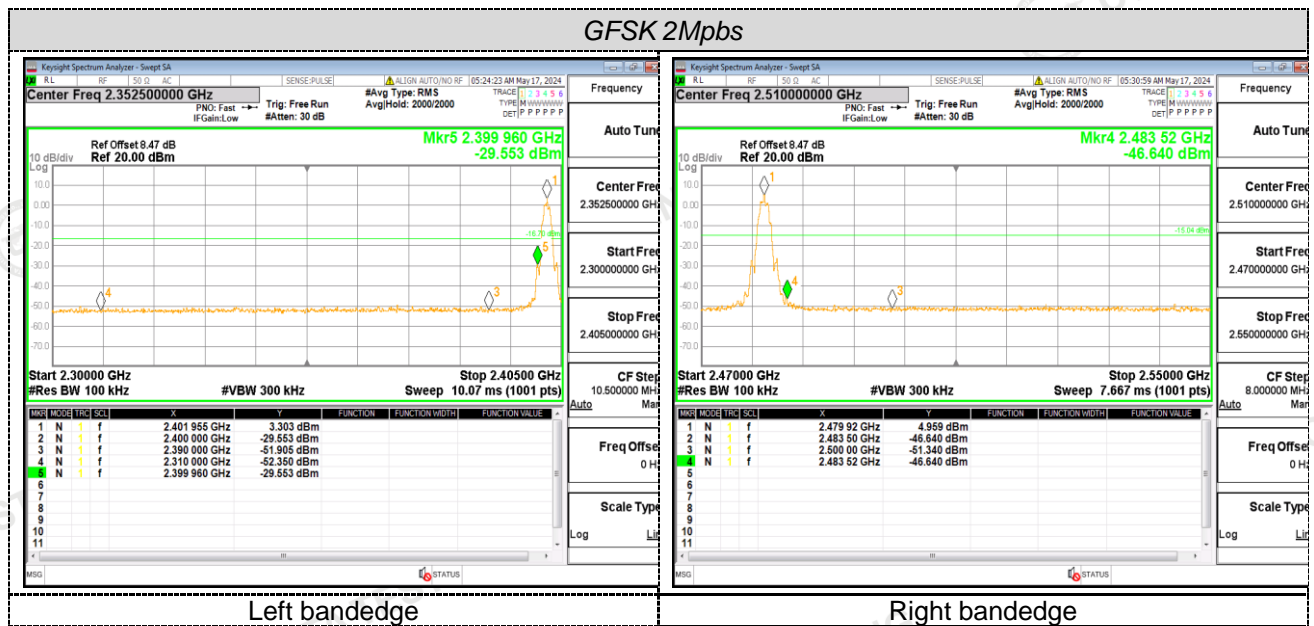
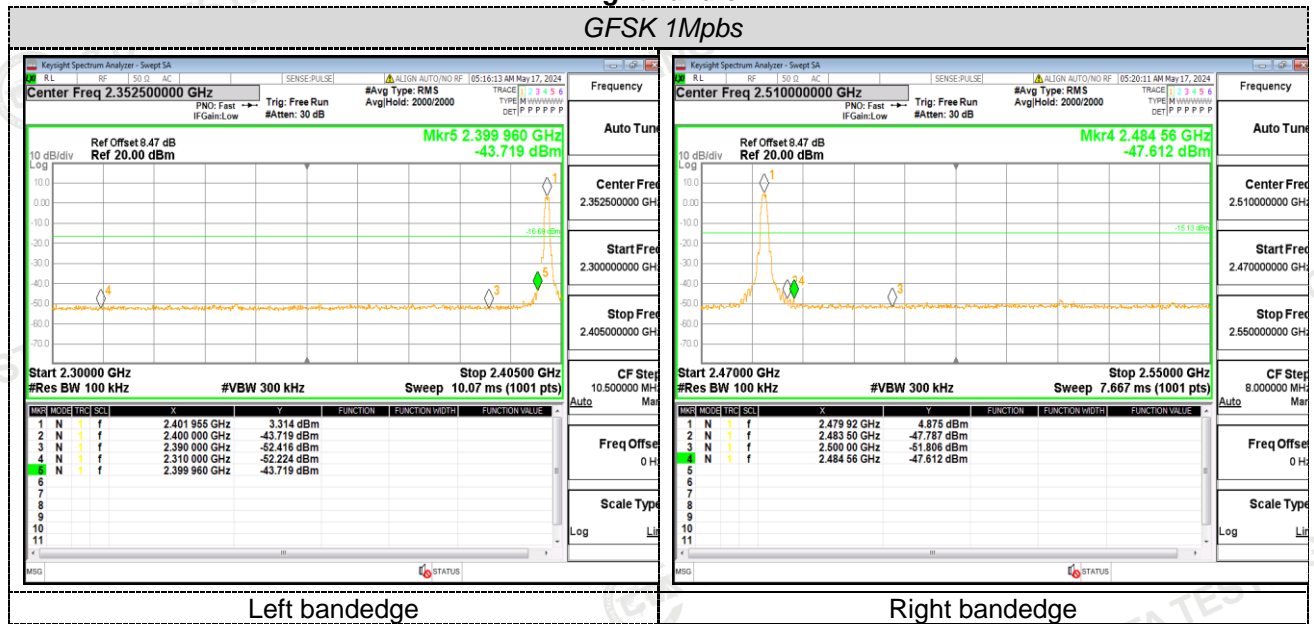
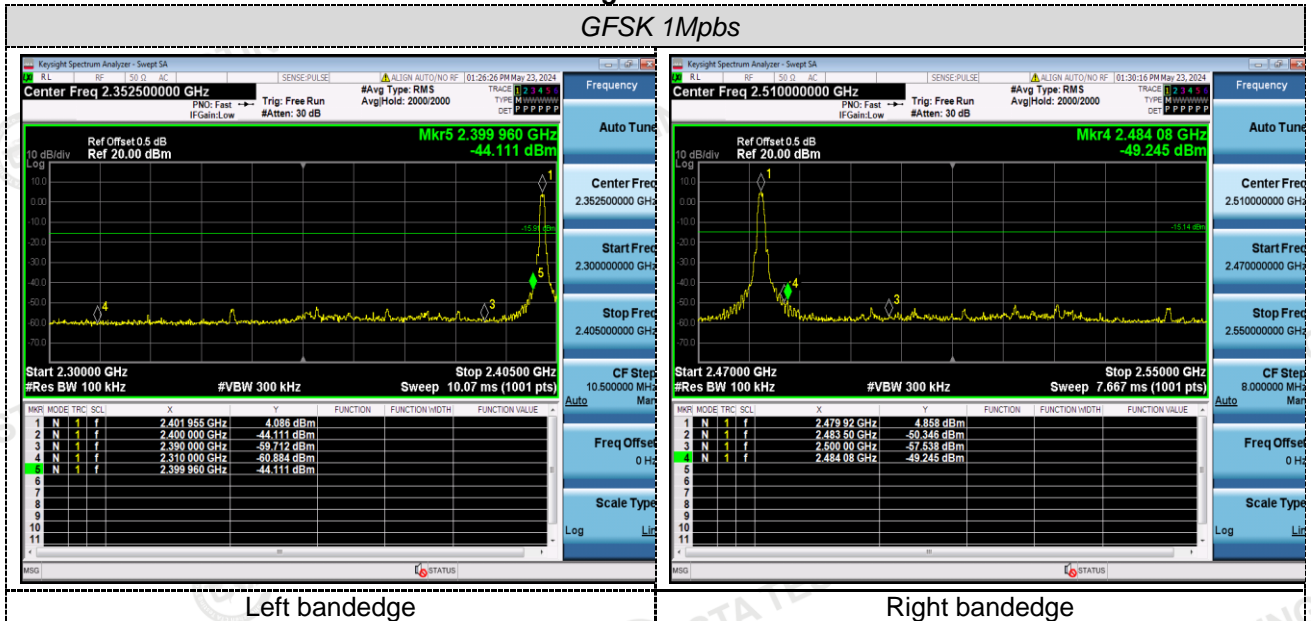


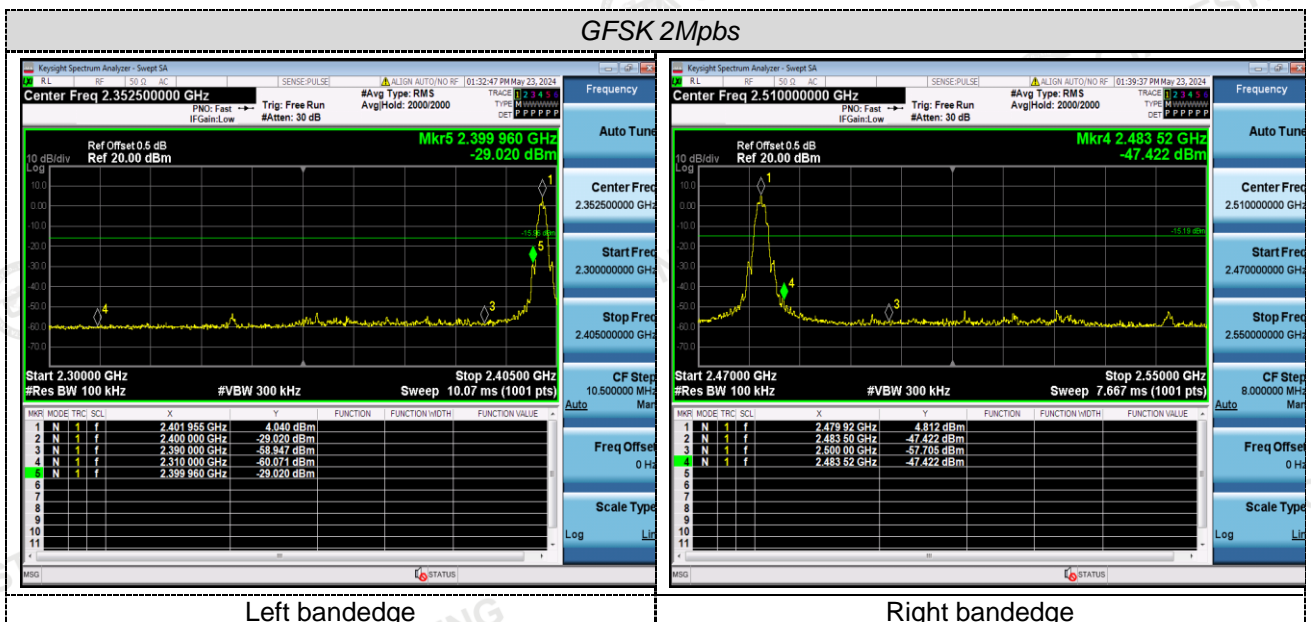
Band-edge Measurements for RF Conducted Emissions:**Light handle****GFSK 1Mbps**

Right handle

GFSK 1Mbps



GFSK 2Mbps



4.7 Antenna Requirement

Standard Requirement

For intentional device, according to FCC 47 CFR Section 15.203:

An intentional radiator shall be designed to ensure that no antenna other than that furnished by the responsible party shall be used with the device. The use of a permanently attached antenna or of an antenna that uses a unique coupling to the intentional radiator shall be considered sufficient to comply with the provisions of this section. The manufacturer may design the unit so that a broken antenna can be replaced by the user, but the use of a standard antenna jack or electrical connector is prohibited.

FCC CFR Title 47 Part 15 Subpart C Section 15.247(c) (1) (i):

(i) Systems operating in the 2400-2483.5 MHz band that is used exclusively for fixed. Point-to-point operations may employ transmitting antennas with directional gain greater than 6dBi provided the maximum conducted output power of the intentional radiator is reduced by 1 dB for every 3 dB that the directional gain of the antenna exceeds 6dBi.

Test Result:

The maximum gain of antenna was 2.16 dBi with impedance 50Ω .

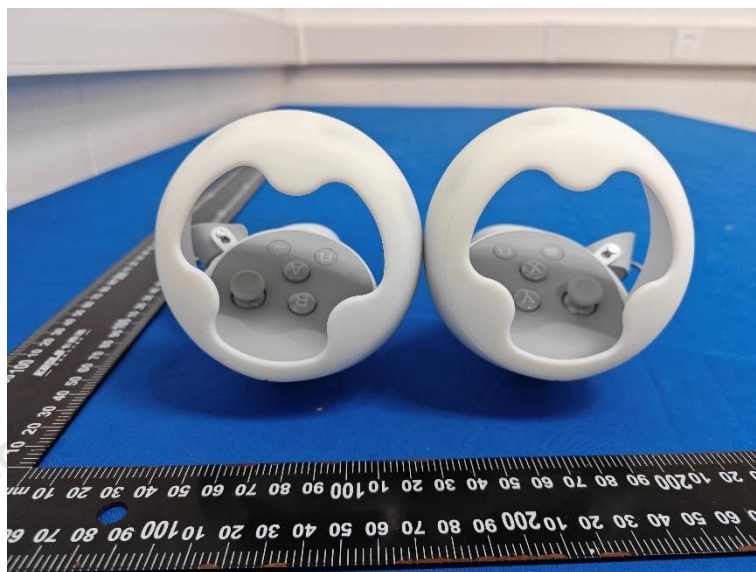
6 Test Setup Photos of the EUT

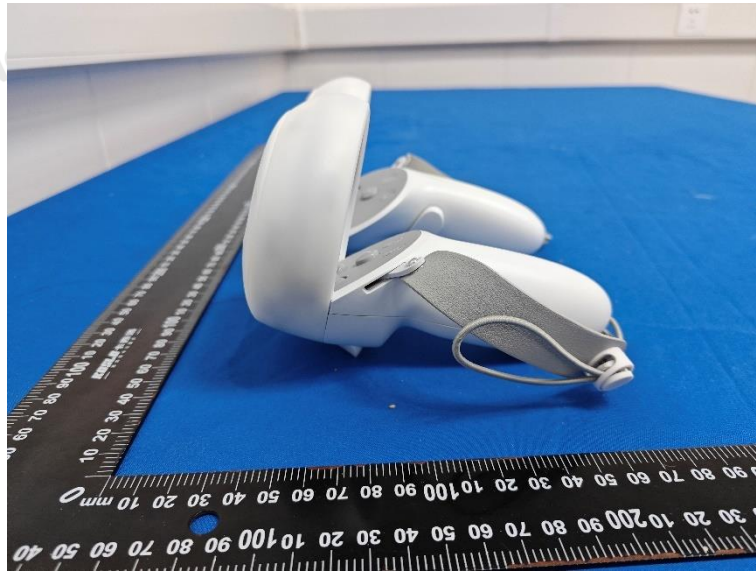


7 Photos of the EUT

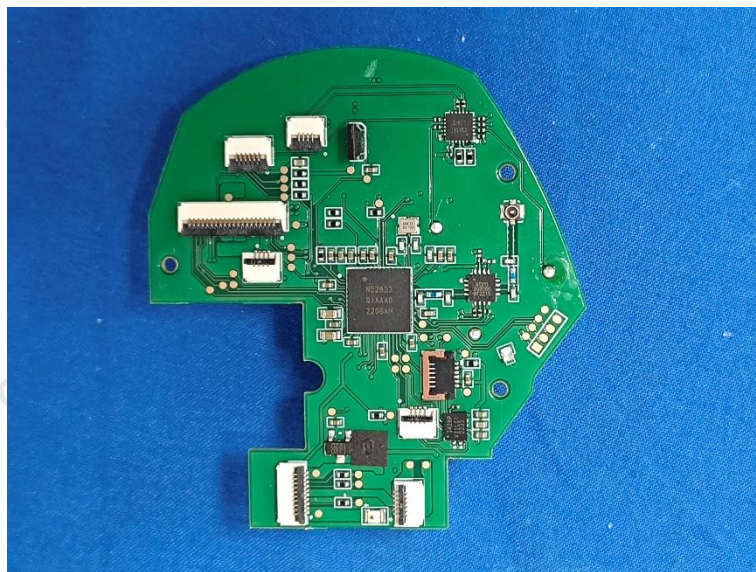
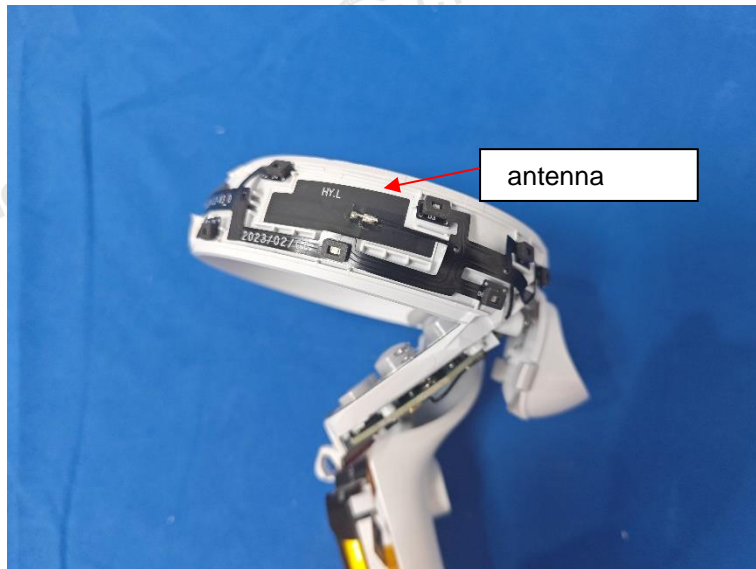
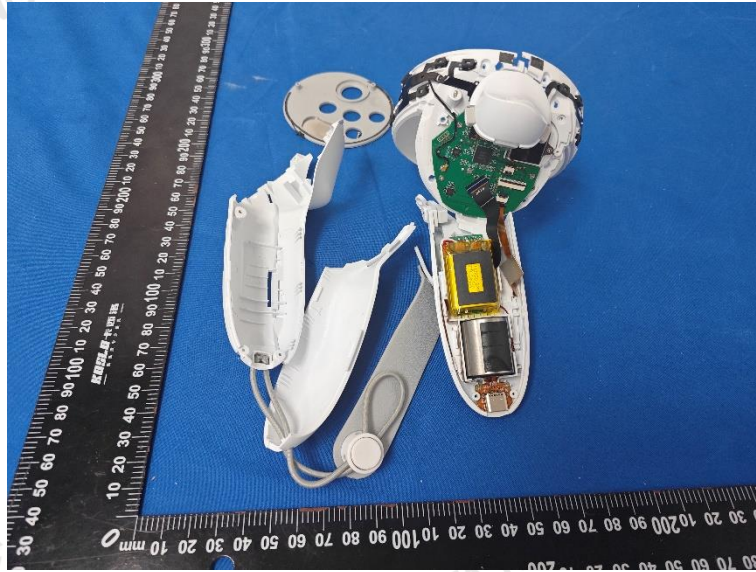
External Photos

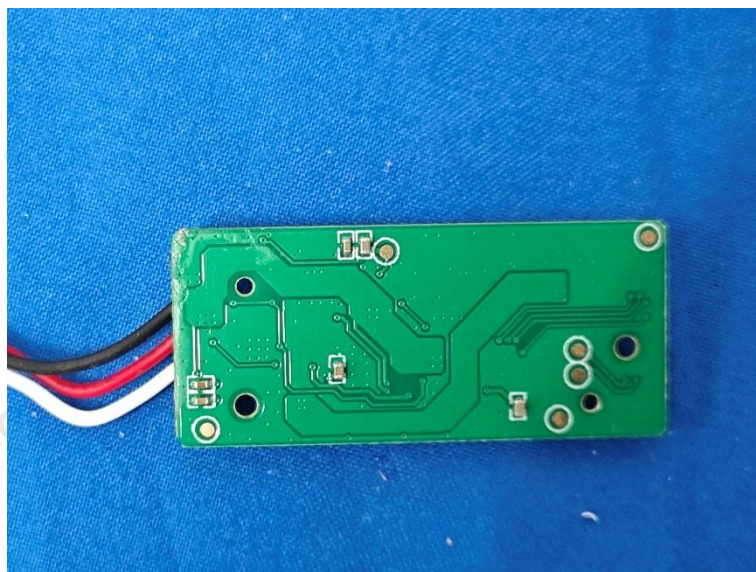
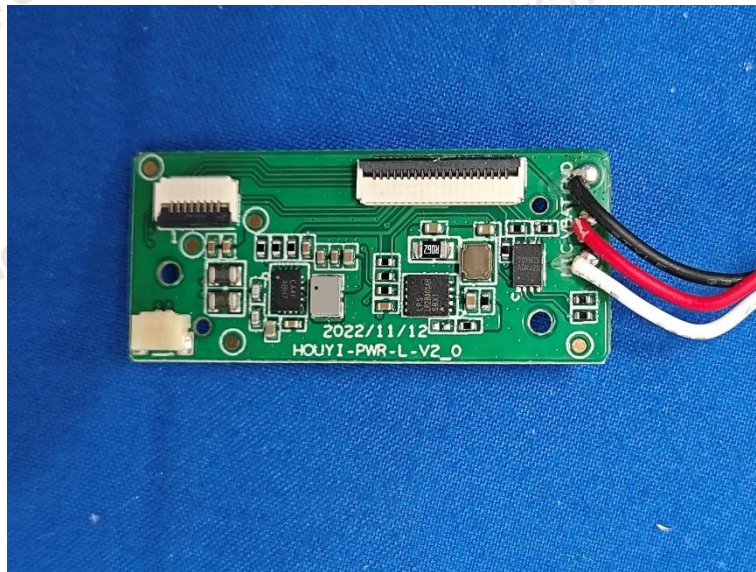
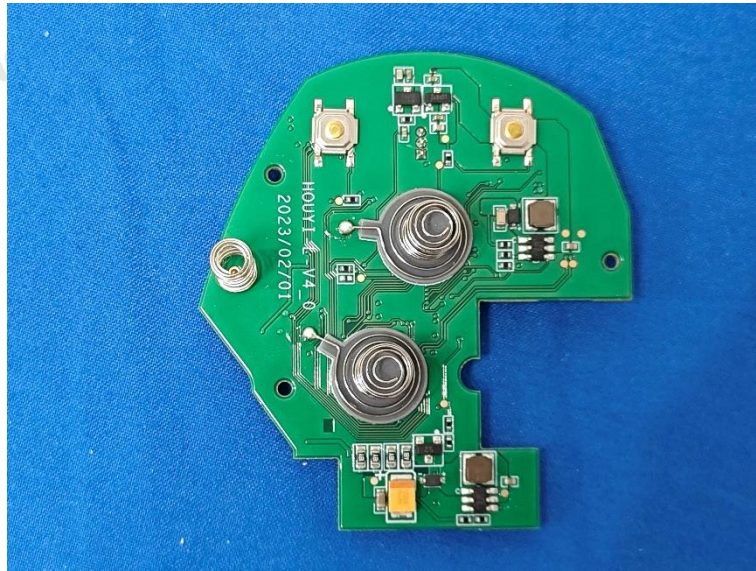






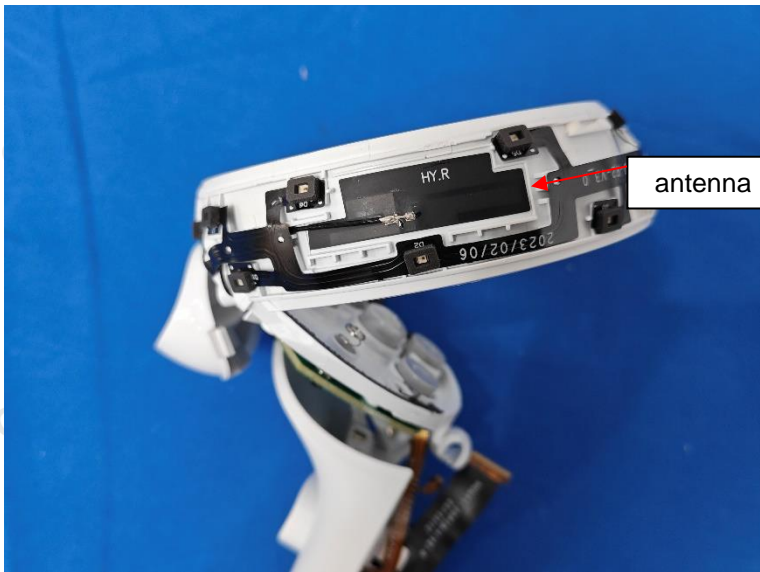
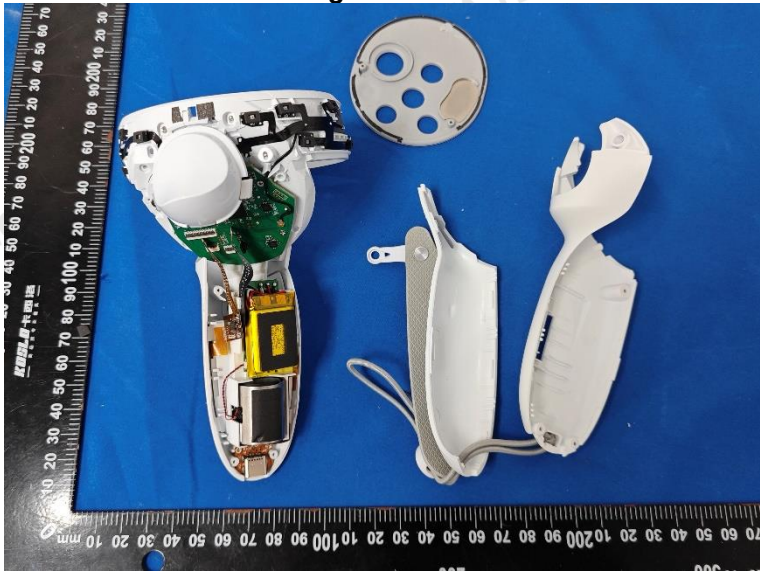
Internal Photos
Left handle

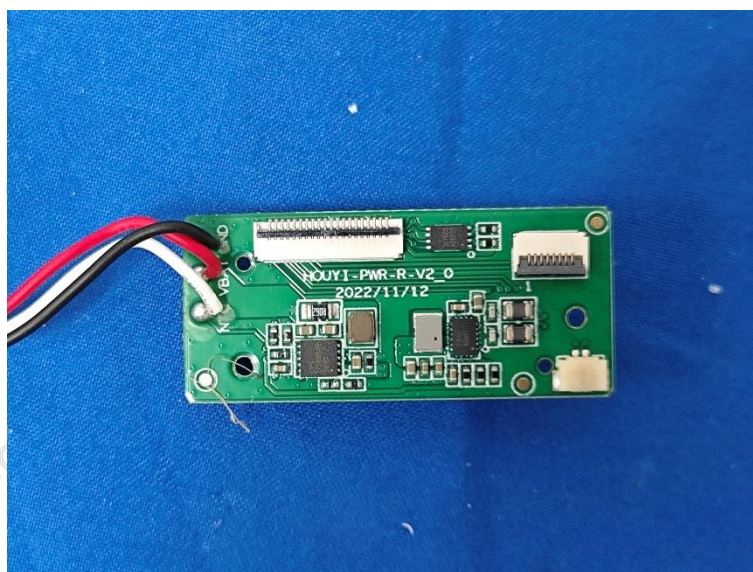
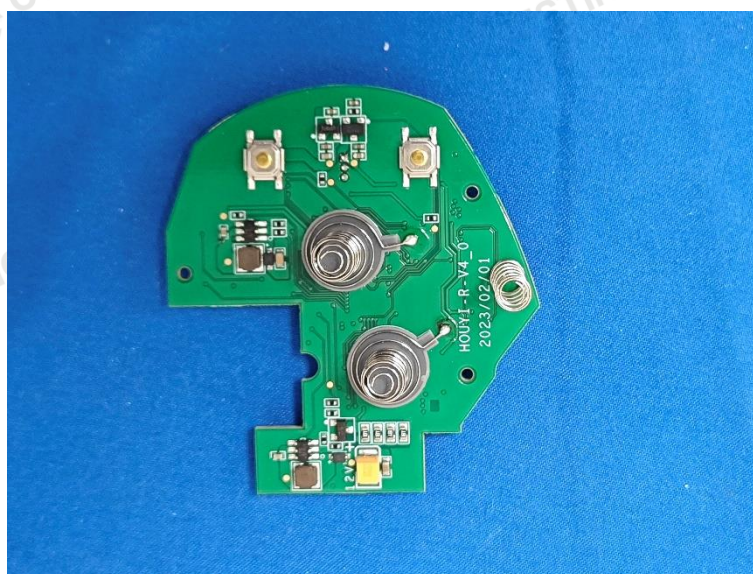
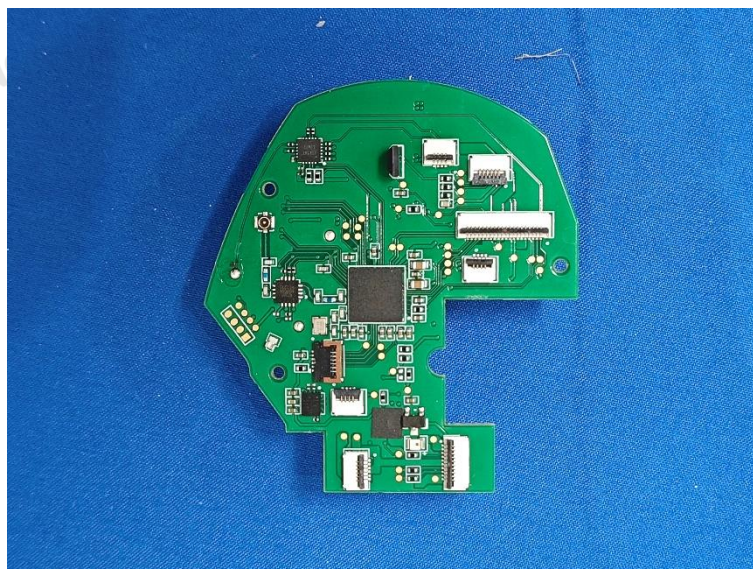


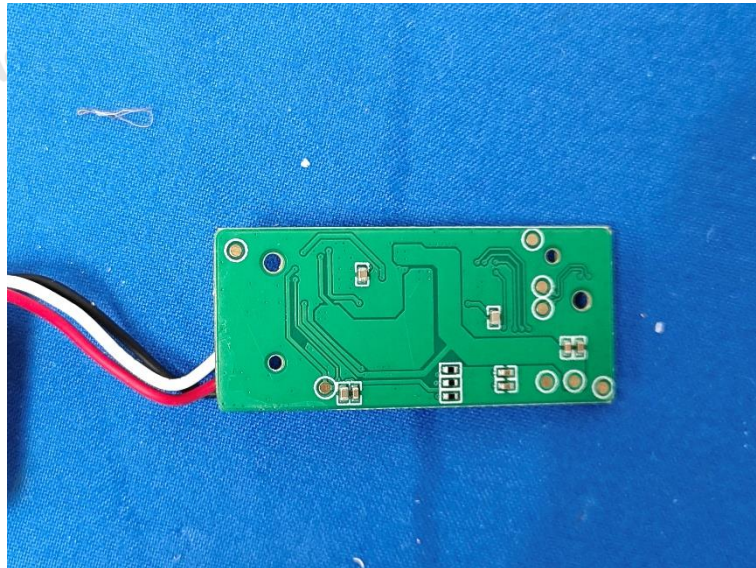




Right handle







***** End of Report *****