

User Manual for Remote Training Collar



Please read this manual carefully before use

Contents

Safety Instructions	1
Product Introduction	2
Components	2
Description	3
1. At a glance	3
2. Receiver Indicator Light Status	4
Operating Instructions	5
1. Charging	5
2. Installation of contact points components and static stimulation test	5
3. Power On/Off: Transmitter and Receiver	6
4. Function Introduction	6
Wearing Method And Precautions	9
1. Wearing Method	9
2. Wearing Precautions	10
Precautions	11
Troubleshooting	13
Frequently Asked Questions	14
Compliance	15

Safety Instructions

To use the remote training collar safely, please observe the following guidelines:

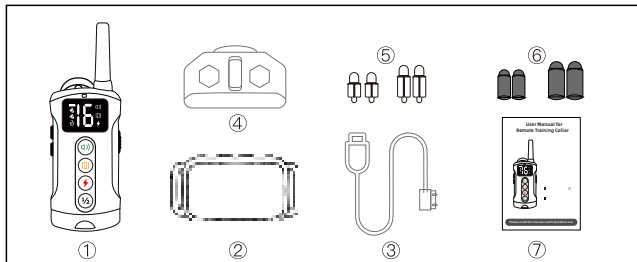
- Our products are only intended for training pets.
- Only for targeted training sessions, and not suitable for extended use (max. 1-2 hours per day.)
- Keep out of reach of children.
- For safety, do not let your pet swim while wearing the receiver collar, the weight or vibration could hinder your pet's swimming ability.
- Do not open the unit yourself.
- The training collar is not intended to control aggressive pets.
- The remote transmitter and receiver collar need to be used together.
- If the hair is too long at the pet's neck, it may cause the receiver collar not to be able to fully contact the skin. It is recommended to properly trim the hair.
- The training collar is not a regular traction collar. Do not connect a leash directly to the training collar. Doing so during pulling may hurt the pet due to protruding the contact points.
- By placing the receiver toward the side of the pet's neck, rather than centered over the trachea you take advantage of having a more muscled, flat surface area to keep the collar in place. It is also advisable to position the collar toward the upper 1/3 of the neck, rather than farther down toward the chest.
- Not used for training puppies younger than 6 months. Recommended for medium and large pets above 20 lbs.
- We suggest using vibration/beep/static/whistle mode to train your pet. Static mode should always be the last mode to use.
- Static model has 0-16 levels, please be very cautious if you want to test a high level.

Product Introduction

Thanks for choosing our product. This remote training collar is a completely new, effective aid for gentle dog training. It can help you control and train your dog in effective range by a series of functions including beep, vibration, static stimulation, whistle sound for remote bark stopping, running about correction, easy calling back, biting and fighting prevention as well as correction of bad habits such as picking and eating unclean food outdoors. Also, other complicated training programs could be carried out using this product. The operation is more simpler, It helps us train dog in a safe and friendly way, Help you have a happy time with your pet.

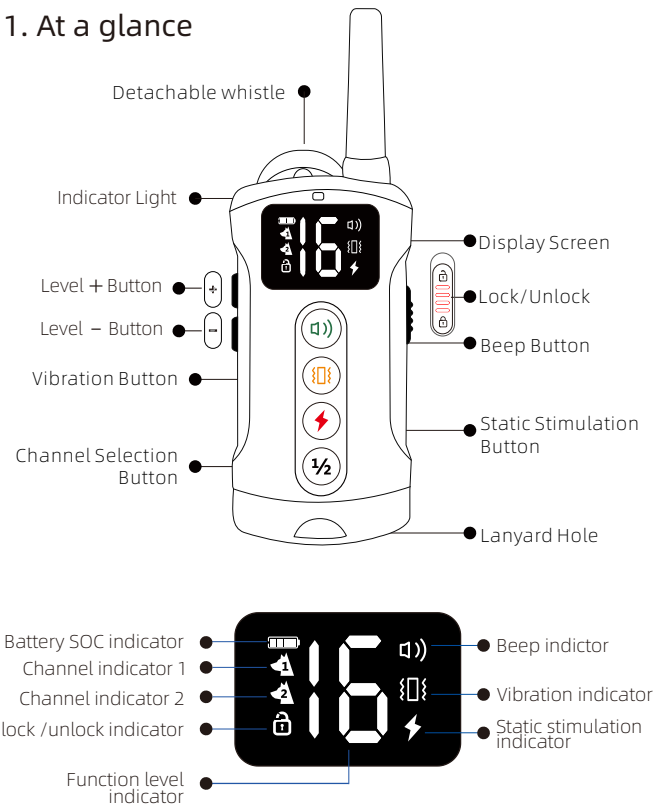
Components

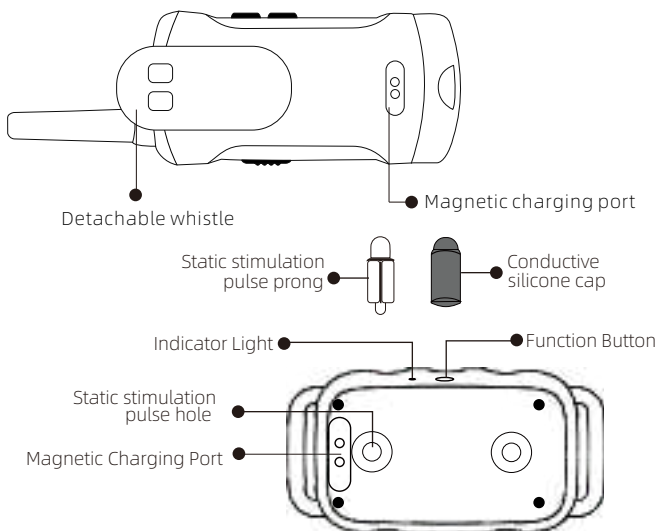
- ① Transmitter *1
- ② Receiver (including collar) *1
- ③ Magnetic Charging Cable *1
- ④ Static Stimulation Test Light *1
- ⑤ Long\Short Static Stimulation Pulse Prong *2 Pairs
- ⑥ Long\Short Silicon Cap *2 Pairs
- ⑦ User Manual *1



Description

1. At a glance



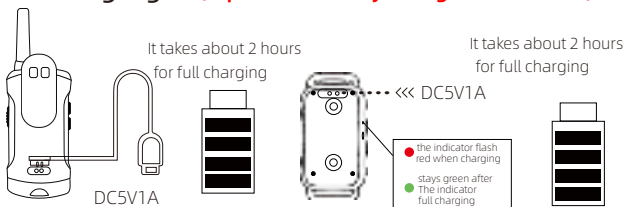


2. Receiver Indicator Light Status

Location	Light Color	Status	Description
Transmitter & Receiver	Red	Flashing	Charging
	Green	After Charging	Charging Completed
	Green	Flashes Once	Beep
	Yellow	Flashes Once	Vibration
	Red	Flashes Once	Static Stimulation
Receiver	Green	Blinks every 5 seconds	Power On

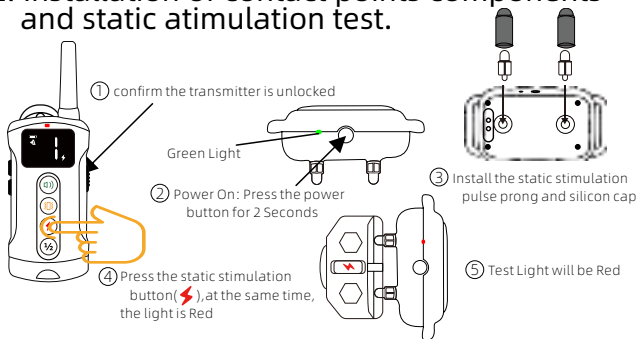
Operating Instructions

1. Charging: **(Tips: Please fully charge before use!)**

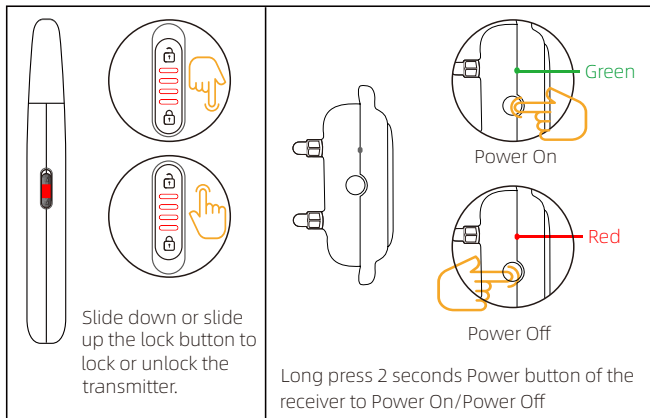


Attach the magnetic charging port to the charging jack properly until a good contact is ensured; Plug the charging cable USB TO the output end of the 5V1A charger;
It takes about 2 hours for full charging. When the transmitter is being charged, the battery SOC indicator scrolls, and when the Transmitter is fully charged, the SOC indicator stops scrolling.
When the Receiver Collar is being charged, the indicator flash red. and indicator turns green after fully charged.

2. Installation of contact points components and static atimulation test.

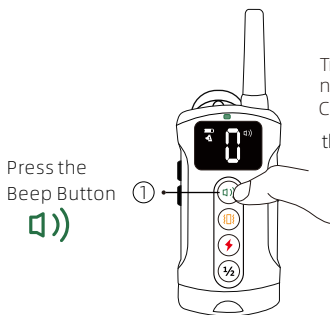


3. Power On/Off: Transmitter and Receiver



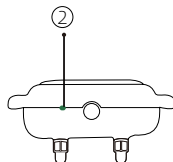
4. Function Introduction

① Beep Function



Transmitter delivers a beep tone with non adjustable volume to the Receiver Collar.

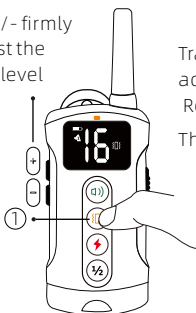
the indicator color shows **Green**.



2 Vibration Function

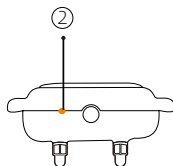
- ③ Press + / - firmly to adjust the vibrate level

Press the Vibra Button



Transmitter delivers a vibrate with adjustable level(level 1-16) to the Receiver Collar.

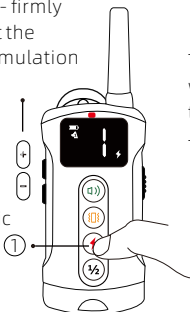
The indicator color shows **Yellow**



3 Static Stimulation Function

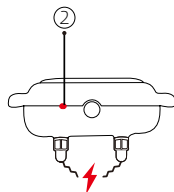
- ③ Press + / - firmly to adjust the static stimulation level

Press the Static Stimulation Button

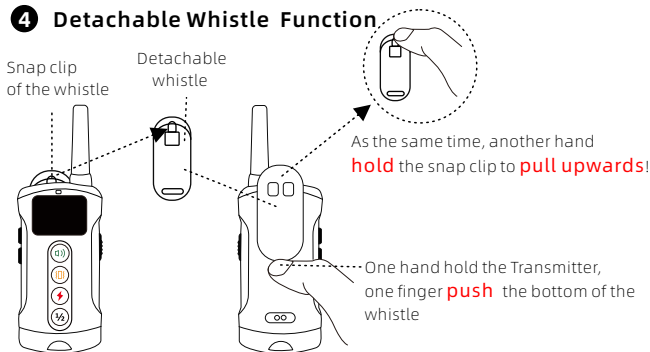


Transmitter delivers a static stimulus with adjustable level(level 1-16) to the Receiver Collar.

The indicator color shows **Red.**



4 Detachable Whistle Function

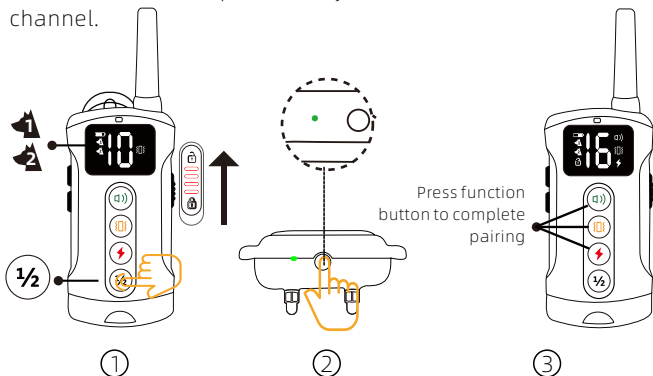


How to pick up the whistle from the Transmitter?

5 Pairing and select the communication channel

Tips: The default factory settings of the communication channel is channel 1 (📶 1).

Please follow the steps below if you want to switch to another channel.



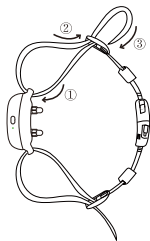
- ① Unlock the transmitter and long press the (½) button to select a signal channel(1 or 2).
- ② Make sure the Receiver is shut down first, and hold on the ON\OFF button for 7 seconds, the green light will flash quickly and enter to the matching state after hearing a beep.
- ③ Please press the function button((a)) (b) (c)) within 10 seconds when entering the matching state, and the Receiver will beep twice indicating that the matching is successful.

Note:

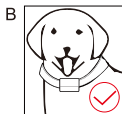
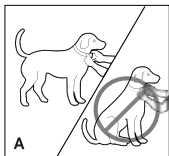
1. Repeat above steps when timeout
2. One channel can control multiple receivers simultaneously.

Wearing Method And Precautions

1. Wearing Method



How to wear the strap



The proper fit and placement of your Receiver Collar is important for effective training, Please follow these steps:

- A. Please keep the dog in a comfortable standing position and ensure that the Receiver is turned off before wearing.
- B. Please place the Receiver in the middle of the dog's neck and ensure that the direction of the switch button is upward, and the contact point is aligned with the dog's throat. Check the tightness of the Receiver Collar.
- C. The wearing standard is that a finger can be held between the collar and the dog's neck. If the collar is too loose or tight, the normal operation of the product will be affected.
- D. Mark the length of the collar with a pen, remove the collar and cut off the excess part, and slightly burn the edge with a lighter to prevent the thread from falling off.

2. Wearing Precautions

- Wearing a Collar for a long time or too tight will cause the dog's skin to be worn, from redness to pressure sores.
- Please make sure your dog doesn't wear the Collar more than 12 hours a day.
- Please try to readjust the Collar position on the pet's neck every 1 to 2 hours.
- Do not connect the tow rope to the Receiver, or excessive pressure will be caused to the Collar.
- Please clean your pet's neck area and the contact area of the Receiver with a damp cloth every week.
- Please stop using the collar until the skin heals if you notice a rash or pain in your dogs. If the condition persists for more than 48 hours, seek medical attention immediately.



Precautions

1	This product cannot be tested directly on humans, otherwise it will violate local laws.	
2	Turn off or remove the Receiver Collar before playing with the dog.	
3	Please do not wear the Receiver Collar on your dog for a long time	
4	Do not place the product near a stove or at high temperatures.	
5	Do not open the shell of the product, which will cause the lithium battery disconnect or fire.	

This is the safety alert symbol. It is used to alert you to potential personal injury hazards. Obey all safety messages that follow this symbol to avoid possible injury or death.

WARNING

WARNING indicates a hazardous situation which, if not avoided, could result in death or serious injury,

CAUTION

CAUTION, used with the safety alert symbol, indicates a hazardous situation which, if not avoided, could result in minor or moderate injury

CAUTION

CAUTION, used without the safety alert symbol, indicates a hazardous situation which, if not avoided, could result in harm to your pet.

WARNING

Do not use this product if your dog is prone to aggressive behavior. Aggressive dogs can cause severe injury and even death to their owner and others, If you are unsure whether this product is appropriate for your dog, please consult your veterinarian or a certified trainer.

This device contains Lithium-Ion(Li-Ion)batteries, never incinerate, puncture, deform, short-circuit,or charge with an inappropriate charger, Fire, explosion, property damage, or bodily harm may occur if this warning is not followed.

CAUTION

- It is vitally important that you and your pet remain safe while learning during on-leash training, Your pet should be on a strong leash, long enough for him to attempt to chase an object, but short enough for him not to reach a road or other hazard. You must also be physically strong enough to restrain your pet when he tries to chase.
- This pet training device is not a toy, keep away from children.

CAUTION

- Proper fit of the collar is important. A collar worn for too long or made too tight on the pet's neck may cause skin damage ranging from redness to pressure ulcers. This condition is commonly known as bed sores.

- Avoid leaving the Collar on the dog for more than 12 hours per day.
- When possible reposition the Collar on the pet's neck every 1 to 2 hours.
- Regularly recheck the fit to prevent excessive pressure; follow the instructions in this manual.
- You may need to trim the hair in the area of the contact points. However, never shave the dog's neck; this may lead to a rash or infection
- Never connect a leash to a Collar with contact points. It will cause excessive pressure on the contact points.
- When connecting a leash to a separate collar, do not allow it to put pressure on the training collar.
- Wash the dog's neck area and the contacts of the Collar weekly with a damp cloth.
- Examine the contact area daily for signs of a rash or a sore.
- If a rash or sore is found, discontinue use of the collar until the skin has healed.
- If the condition persists beyond 48 hours, see your veterinarian.
- For additional information on bed sores and pressure necrosis, please visit our website.

This product is only for use with healthy pets. If you're not certain that your pet is in good health, we recommend that you take your pet to a veterinarian before using this product.

Troubleshooting

1. The Receiver is not working?

- ① Check whether the Receiver is powered on, check if the indicator shows green.
- ② Check whether the Receiver has electricity

2. There is no response when pressing the static stimulation function

Check whether the static stimulation function is unlocked

3. Can't switch channels?

Long press the Transmitter channel switching (CH) button, the screen displays the current corresponding channel, then press CH button one time to choose the channel

Frequently Asked Questions

Q: Once my pet has been trained and obeying my commands, will it have to continue to wear the Receiver?

A: Probably not. You may need to reinforce training with the Receiver Collar from time to time.

Q: Is the Receiver Collar waterproof?

A: Yes, the waterproof level is Ip67, dogs can swim with the product. But when your dog is swimming with this Collar, other objects may get stuck in the Collar and make your dog difficult to breathe, so for safety reasons, it is not recommended to wear this Collar when your dog is swimming.

Q: How long can I continuously deliver vibration to my pet?

A: Once you press the vibration button, the vibration will last for 15S at maximum, After this, vibration cannot be delivered until you release and press the button again.

Q: How long should a training course be?

A: The training course should be kept active and short, and a duration of about 10-15 minutes is recommended to ensure a better training effect.

Q: Is there any after-sales service provided for the product?

A: Our products are provided with after-sales service, The warranty period is one year, and any problems arising from product quality problem instead of misuse are legible for warranty services.

Q: Is the vibration safe to my pet?

A: Though unpleasant, the vibration is harmless to your pet. The electronic training device requires user interaction and training to achieve the desired results.

Q: How old should my pet be to use the Remote Training Collar?

A: Your pet should be able to recognize basic commands such as “sit” or “no move” .

Pets must be at least 6 months old.

Compliance



This symbol means the product has been CE certified, and any product with CE mark is proved in compliance with the local regulations of EEAs.



This symbol means that the electromagnetic interference of the equipment is lower than the limit approved by the Federal Communications Commission.



Disposal of package: The package shall be disposed by type.

- Disposed as waste papers for cardboards and cartons
- Recycling for packaging cases.



Disposal system: The disposal system shall be applicable to EU and other European countries and capable of collecting recyclable materials by category.

FCC Warning

This device complies with part 15 of the FCC Rules. Operation is subject to the following two conditions:

(1) This device may not cause harmful interference. and (2) This device must accept any interference received, including interference that may cause undesired operation. Any changes or modifications not expressly approved by the party responsible for compliance could void the user's authority to operate the equipment

NOTE: This equipment has been tested and found to comply with the limits for a class B digital device, pursuant to Part 15 of the FCC Rules. These limits are designed to provide reasonable protection against harmful interference in a residential installation. This equipment generates, uses and can radiate radio frequency energy and, if not installed and used in accordance with the instructions, may cause harmful interference to radio communications. However, there is no guarantee that interference will not occur in a particular installation.

If this equipment does cause harmful interference to radio or television reception, which can be determined by turning the equipment off and on, the user is encouraged to try to correct the interference by one or more of the following measures:

- Reorient or relocate the receiving antenna.
- Increase the separation between the equipment and receiver.
- Connect the equipment into an outlet on circuit different from that to which the receiver is connected.

--Consult the dealer or an experienced radio \ TV technician to help.

The device has been evaluated to meet general RF exposure requirement. The device can be used in portable exposure condition without restriction.