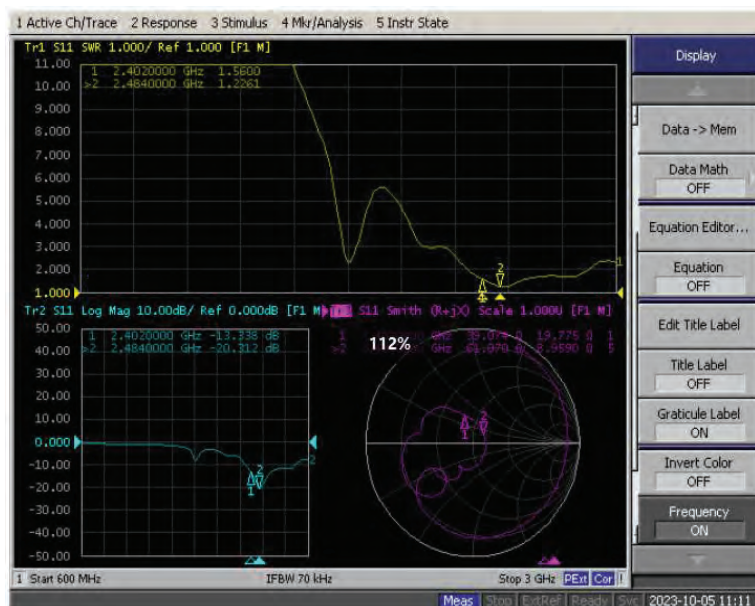


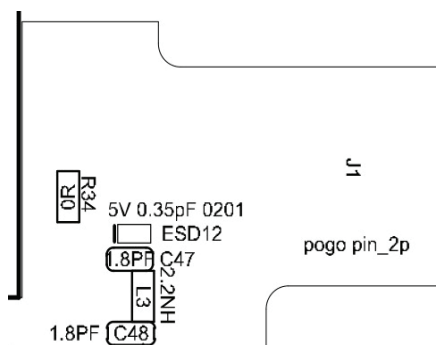
Contents of Report

Title: KC-TX Antenna Test Result Report : Antenna Efficiency: Approximately 60%
OTA Test Data: Overall performance is excellent

Antenna Matching Circuit Modification Instructions:



Antenna impedance parameter test:



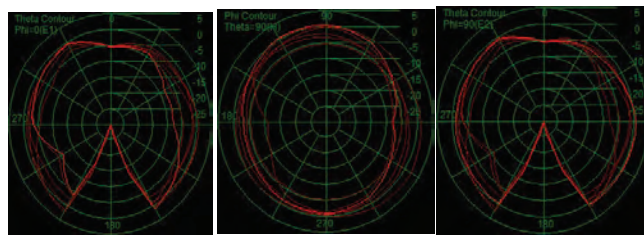
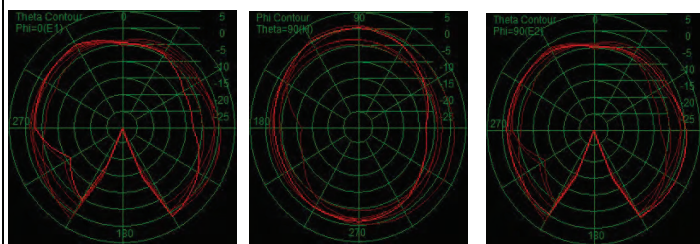
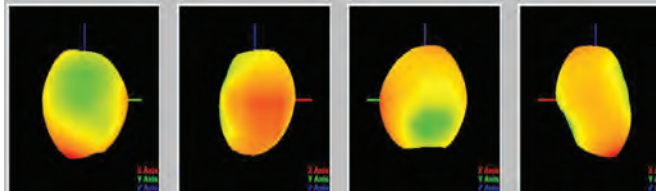
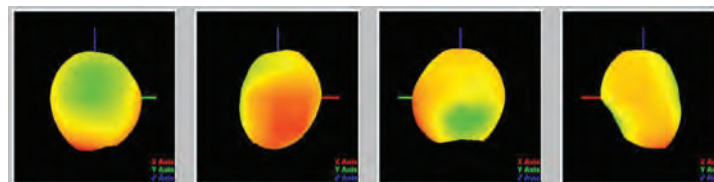
R34 antenna matching position is left empty.
C47 and C48 matching positions are left empty.
L3 matching is modified to use 0 ohms. ,

Note:
The battery should not exceed the red line,
should be securely fixed, and the battery wires
should be tightened.

Antenna Efficiency and Gain at Different Frequencies:

Frequency(MHz)	Efficiency (%)	Efficiency (dB)	Gain
2400	57%	-2.4	2.9
2410	58%	-2.4	3.2
2420	59%	-2.3	3.5
2430	61%	-2.2	3.8
2440	64%	-1.9	4.2
2450	63%	-2.0	4.4
2460	62%	-2.1	4.2
2470	62%	-2.1	4.0
2480	60%	-2.2	3.8
2490	59%	-2.3	3.7
2500	57%	-2.4	3.6

Passive Radiation Pattern:

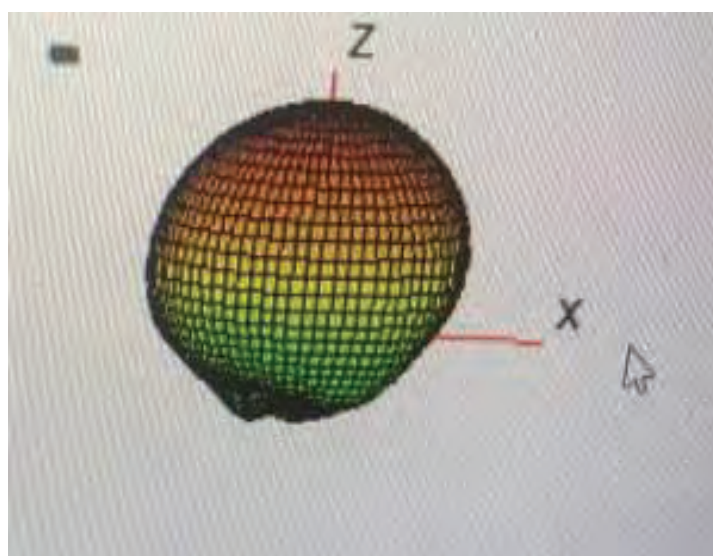
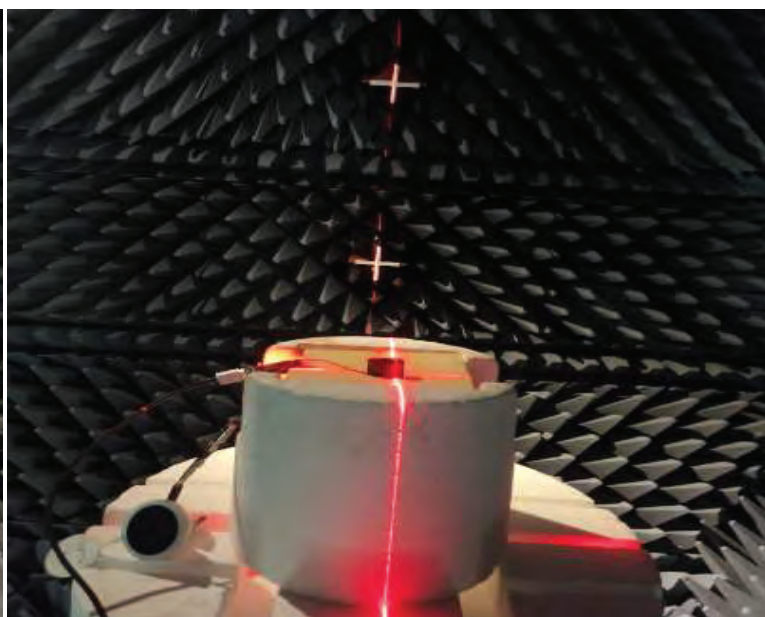
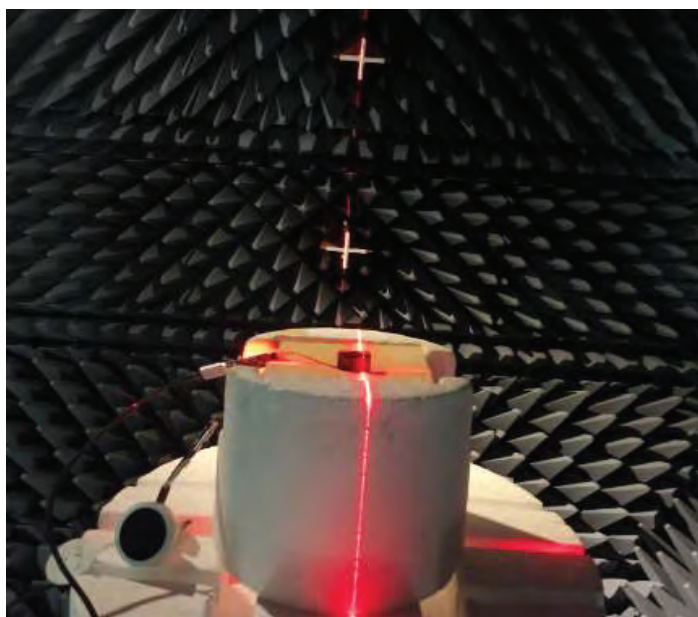


Active OTA Test and Conduction Test Results:

Channel	TX (dBm)	RX (dBm)
CH0	13.1	-98
CH19	13.2	-99
CH39	13.2	-99

OTA test	TX (dBm)	RX (dBm)
CH0	10.4	-94.3
CH19	10.5	-95.1
CH39	10.7	-95.2

Antenna Test Environment:



Note on Coordinate System:

Negative y is outside the door, positive y is inside.
Left is negative x.