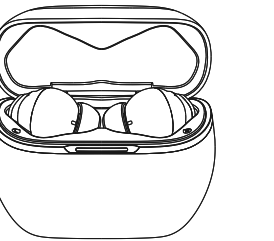


USER MANUAL

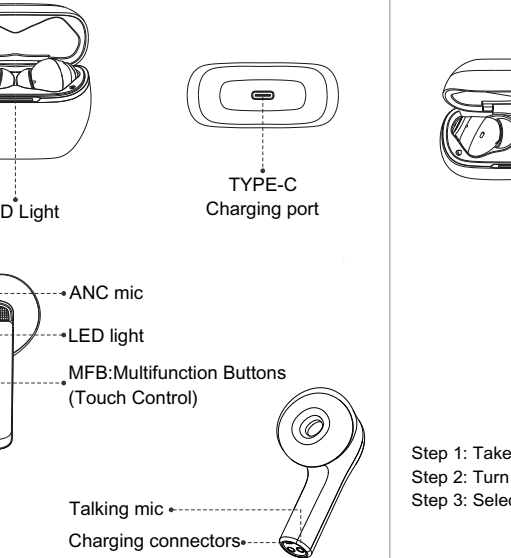
F18 Wireless Headset



English

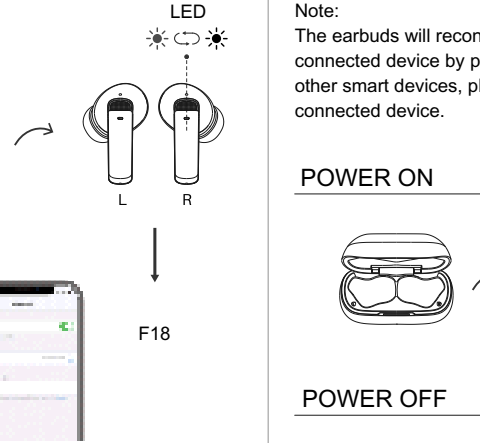


DIAGRAM



-1-

PAIRING



Step 1: Take out the headphones from the charging case;
Step 2: Turn on the setting of your phone;
Step 3: Select "F18" on the retrieved device to connect.

-2-

STARTUP & SHUTDOWN

Note:
The earbuds will reconnect to the previously connected device by priority. If you want to connect other smart devices, please disconnect the previously connected device.

POWER ON

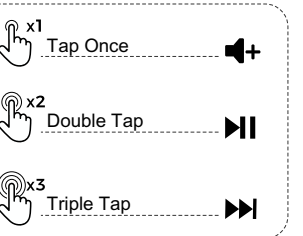
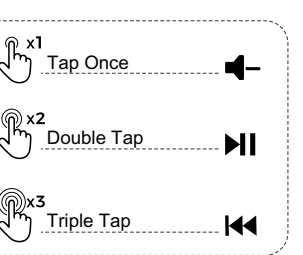


POWER OFF



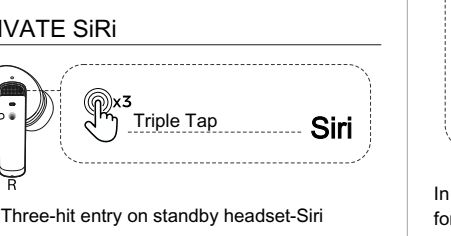
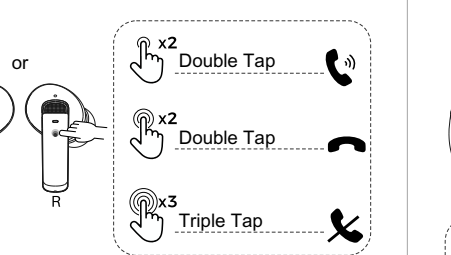
-3-

MUSIC



-4-

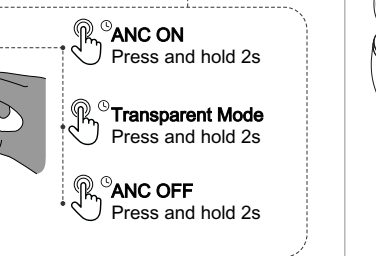
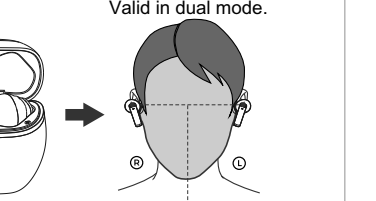
INCOMING CALL



Three-hit entry on standby headset-Siri

-5-

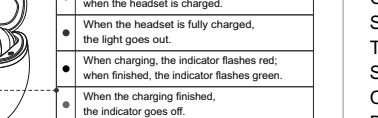
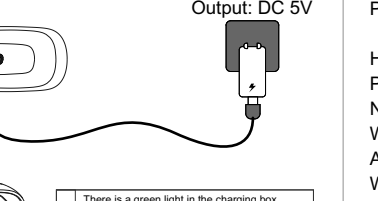
ANC MODE



In dual mode, press and hold the left or right earbud for 2 seconds to turn on or off the ANC mode.

-6-

CHARGING



Do not put the earbuds in the charging case when the earbuds are wet.

-7-

BASIC PARAMETERS

Product model: F18

Headphones Specifics

Product Size: 31.04×21×23.9mm / 1.22×0.82×0.94in

Net of headphones: 6g / 0.01lb

Wireless Version: V5.2

ANC performance: 35dB

Waterproof level: IPX7

Charging time: about 1.5 hours

Single using time: about 8 hours

Total using time: about 40 hours

Standby time: about 100 hours

Communication distance: more than 10 meters

Battery capacity: 50mah (single earphone)

Battery type: lithium ion polymer battery

Charging Case Specifics

Product Size: 60×44.6×25.17mm / 2.36×1.75×0.99in

Net of charging case: 45g / 0.1lb

Charging Port: TYPE-C

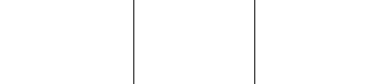
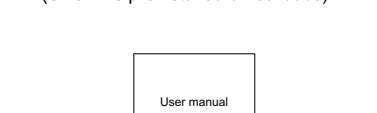
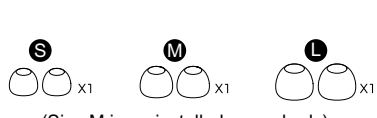
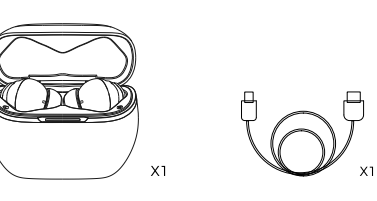
Charging Time: about 2.5 hours

Battery capacity: 400mAh

Battery type: lithium ion polymer battery

-8-

PACKING LIST



User manual

-9-

CORRECT DISPOSAL OF THIS PRODUCT

When you see this marking or literal instruction shown on the product, it indicates that the product should not be disposed with other household wastes at the end of its service life. To prevent possible harm to the environment or human health from uncontrolled waste disposal, please dispose of this product strictly according to the local waste disposal guidelines and separately from other types of wastes and recycle it responsibly to promote the sustainable reuse of material resources.

Household user should contact either the retailer where they purchased this product or their local government office, for details of where and how they can take this item for environmentally safe recycling; business users should contact their supplier and check the terms and conditions of the purchase. Please note that this product should not be mixed with other commercial wastes for disposal.

-10-

FCC STATEMENT

All changes or modifications not expressly approved by the party responsible for compliance could void the user's authority to operate the equipment. This device complies with part 15 of the FCC rules, operation is subject to the following two conditions: (1) this device may not cause harmful interference and (2) this device must accept any interference, including interference that may cause undesired operation.

FCC RF Radiation Exposure Statement This equipment complies with FCC radiation exposure limits set forth for an uncontrolled environment.

-11-

FCC CAUTION

This device complies with part 15 of the FCC Rules. Operation is subject to the following two conditions: (1) This device may not cause harmful interference, and (2) this device must accept any interference received, including interference that may cause undesired operation.

Note: This equipment has been tested and found to comply with the limits for a Class B digital device, pursuant to part 15 of the FCC Rules. These limits are designed to provide reasonable protection against harmful interference in a residential installation. This equipment generates uses and can radiate radio frequency energy and, if not installed and used in accordance with the instructions, may cause harmful interference to radio or television reception, which can be determined by turning the equipment off and on, the user is encouraged to try to correct the interference by one or more of the following measures:

-12-

FCC CAUTION

-Reorient or relocate the receiving antenna.
-Increase the separation between the equipment and receiver.
-Connect the equipment into an outlet on a circuit different from that to which the receiver is connected.
-Consult the dealer or an experienced radio/TV technician for help.

The device has been evaluated to meet general RF exposure requirement. The device can be used in portable exposure condition without restriction.

-13-

WARRANTY AND CUSTOMER SERVICE

We provide friendly 24-Hour after sales customer service and a professional team at any time and also provide 18 months warranty.

There are two ways to contact us:

1. Our customer service email:

F18_Service@hotmail.com

2. Enter our store that below the button "Add to cart" and find the button "Ask a question", which can also contact us directly.

We sincerely hope you can enjoy our products all the time!

-14-