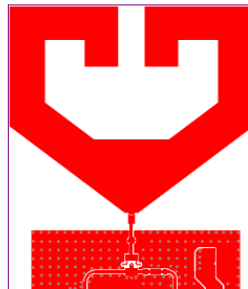


Antenna specification

PIT Unit X: LoRa Antenna specification:

Antenna type	Print antenna		
Frequency range	Freq. Channel	Freq. Channel	Freq. Channel
	902.300 MHz	908.700 MHz	914.900 MHz
Antenna gain max (peak)	0dBi	0dBi	0dBi

Antenna mechanical design \ layout



PIT Unit X: BLE Antenna specification:

Antenna type	Printed antenna		
Frequency range	Freq. Channel	Freq. Channel	Freq. Channel
	2404 MHz	2446 MHz	2480 MHz
Antenna gain max (peak)	+2.5dBi	+2.5dBi	+2.5dBi

Antenna mechanical design \ layout

