

成品尺寸: 85*110mm

展开尺寸: 170*110mm

请仔细校对文字、图案、内容、尺寸, 若要修改请书面说明, 若无异议请确认!!

Wearing Earbuds

Place over back of neck and let hang over shoulders for quick, easy use anytime.

WARNING! IMPORTANT CARE AND SAFEGUARDS

Failure to follow safety instructions can lead to fire, shock, personal injury or property damage and damage to product.

- This product contains small parts and is not suitable for children
- Do not use this device for anything other than its intended use
- Device must have Bluetooth connection to connect to the wireless earbuds
- If you have an electrical device, such as a pacemaker, consult a physician before using this product
- The earbuds and controls are not waterproof
- Do not expose this product to rain, water or excessive humidity
- Do not store this product next to heat sources or in direct sunlight
- Do not handle earbuds or controls with wet hands
- Extreme hot and/or cold weather may damage this product
- Always use this product in operating temperatures of 32°F (0°C) - 95°F (35°C)
- Never take this device apart and always get repaired by a qualified technician
- Do not use the earbuds if they have been damaged in any way
- This product contains one or more internal batteries, please dispose responsibly

FCC Caution:

This device complies with part 15 of the FCC Rules. Operation is subject to the following two conditions: (1) This device may not cause harmful interference, and (2) this device must accept any interference received, including interference that may cause undesired operation.

Any Changes or modifications not expressly approved by the party responsible for compliance could void the user's authority to operate the equipment.

Note: This equipment has been tested and found to comply with the limits for a Class B digital device, pursuant to part 15 of the FCC Rules. These limits are designed to provide reasonable protection against harmful interference in a residential installation.

This equipment generates uses and can radiate radio frequency energy and, if not installed and used in accordance with the instructions, may cause harmful interference to radio communications. However, there is no guarantee that interference will not occur in a particular installation. If this equipment does cause harmful interference to radio or television reception, which can be determined by turning the equipment off and on, the user is encouraged to try to correct the interference by one or more of the following measures:

- Reorient or relocate the receiving antenna.
- Increase the separation between the equipment and receiver.
- Connect the equipment into an outlet on a circuit different from that to which the receiver is connected.
- Consult the dealer or an experienced radio/TV technician for help.

The device has been evaluated to meet general RF exposure requirement. The device can be used in portable exposure condition without restriction.

The Bluetooth® word mark and logos are registered trademarks owned by Bluetooth SIG, Inc.

SAVE THESE INSTRUCTIONS FOR FUTURE REFERENCE

Any questions, please call customer service at 1-800-254-0111

8:30am - 5pm, PST, Monday - Friday, or email us at customerservice@jlrgear.com

2434 Research Dr., Livermore, CA 94550

© 2025 JLR Gear - Made in China



Connected

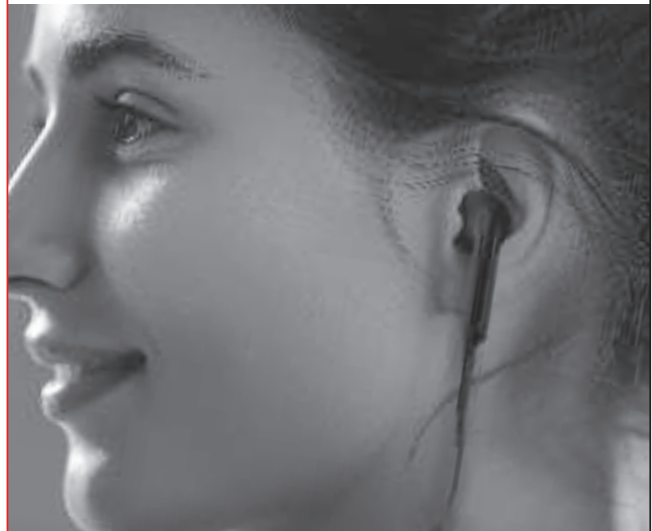
Wireless Earbuds

Product Instruction Manual

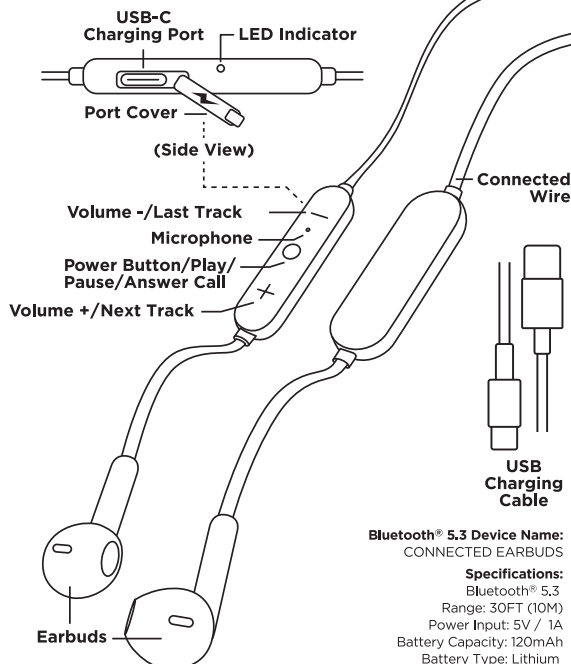
Please read carefully prior to use.



Charge with 5V / 1A USB power source. Charge completely prior to initial use.



Please call customer service at 1-800-254-0111 with any questions



Bluetooth® 5.3 Device Name: CONNECTED EARBUDS

Specifications:

Bluetooth® 5.3
Range: 30FT (10M)
Power Input: 5V / 1A
Battery Capacity: 120mAh
Battery Type: Lithium
Play / Talk Time: Up to 8 Hours*
USB-C Charging Port
Charging Time: Approx. 2.5 Hours

*Play / talk time depends on use, volume level and may be more or less than the time specified.

Charging Earbuds

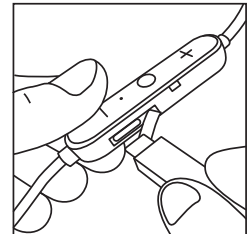
- Connect USB charging cable to USB-C port on side of earbuds controls
- Connect other end of cable to 5V / 1A USB power source (not included).
- LED indicator light will illuminate red while charging and will turn off when complete.

Pair and Connect

- Press and hold power button on top of controls to turn On/Off.
- Earbuds default is Bluetooth® pairing mode.
- Open Bluetooth® menu on your smartphone and search for new devices.
- Connect to CONNECTED EARBUDS. An alert will sound indicating earbuds are connected.
- Earbuds will reconnect to smartphone automatically after initial pairing.
- If auto-reconnect does not occur then repeat the steps above.

Music Playback/Voice Calls

- Control music playback and volume with smartphone via Bluetooth® or controls on earbuds.
- Use music control buttons on your device to play/pause, adjust volume and select tracks.
- Long press + or - to change to next or last track.
- Short press + or - to increase or decrease volume.
- Short press to play or pause the audio track from the earbud controls.
- Built-in microphone for voice calls.
- Short press to answer incoming call.
- Long press to reject incoming call.
- Double press to redial last number.



Care Tip: Periodically wipe clean with soft cloth. Never use abrasive cleaning agent or get wet.