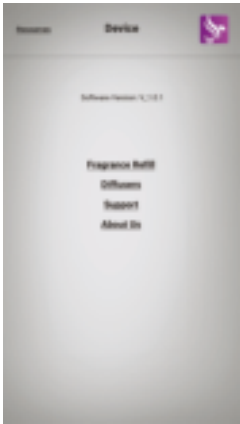


APP OPERATION

尺寸250\*210mm  
材质:150g铜版纸



Searching for device



Resource Link Page



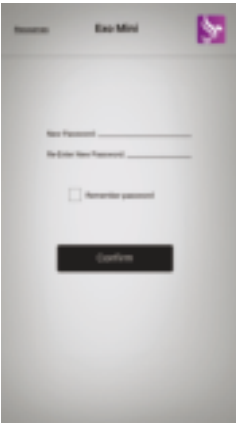
Device Loading Page



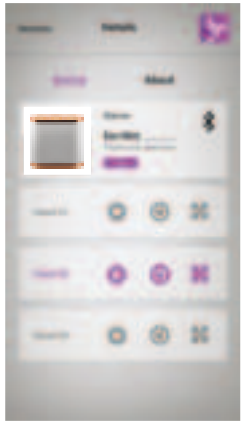
Showing Detected Devices



Password Login



New Password



Device Head Control



Settings for specific head



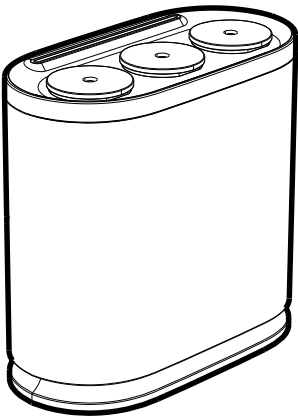
Schedule settings

Product Manual



Phoenicia Trio

please search the APP in Apple store



GRADES AND CONSUMPTION

Grade	working(s)	stop(s)	Consume(ml/h)
G1	3s	60s	0.10
G2	7s	60s	0.17
G3	11s	60s	0.25
G4	15s	60s	0.33
G5	19s	60s	0.40
G6	23s	60s	0.58
G7	27s	60s	0.67
G8	31s	60s	0.73
G9	35s	60s	0.80
G10	Customized	Customized	

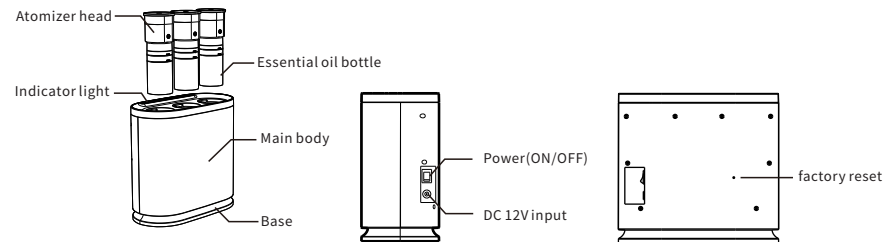
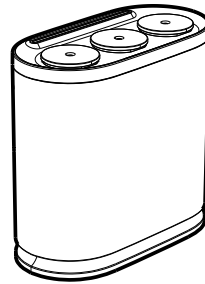
▼ Increase the grade ▲Decrease the grade  
Attention: 1. The data shown above was obtained based on our testing essential oil.  
2. Consumption rate of different essential oils varies, the data shown above only for reference, the actual data may prevail.

## SPECIFICATION

- 【 Model 】 A309
- 【 Dimension 】 247\*119\*231mm
- 【 Net weight 】 2260g
- 【 Voltage 】 12VDC
- 【 Power 】 12W
- 【 Coverage 】 200m<sup>3</sup>
- 【 Bottle capacity】 120ml X 3

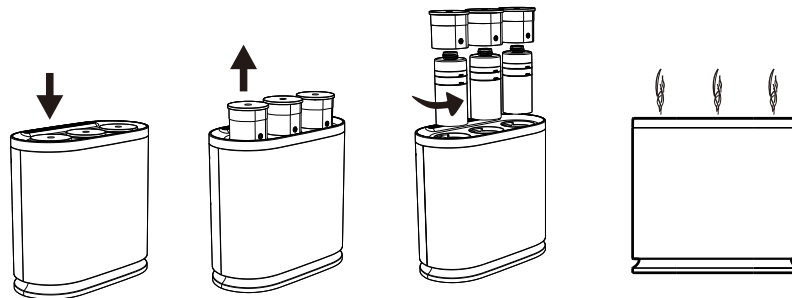


Machine Power cord User manual Bottlex3 Bottle capx3



Indicator light: Three indicator lights correspond to three separate atomizers.  
While light is on, the atomizer is active.

## OPERATING INSTRUCTIONS



1. Press down the atomizer head, it will instantly pop up.
2. Pull the atomizer head up.
3. Screw bottle tightly and place back into the machine.
4. Plug AC adaptor into power jack, and press the power button to turn the power on, then connect to the Bluetooth to operate the machine.

## NOTES

- ⚠ Shall not modify, disassemble or repair the machine if you're not a technician. Any failure happens, please contact relevant technician in time.
- ⚠ Avoiding get fire or electric shock, the power cord shall not be damaged, forced to be bended, yanked or under pressed by heavy objects, clipped or reprocessed.
- ⚠ Avoiding electric shock/ short out/ get fire any failures:
  - Shall not use the AC plug when it is damaged or un-matched with the socket;
  - Shall not wet the machine or the AC plug;
  - Shall not use overladen power socket, wire or broken plug.
- ⚠ Avoiding electric shock, shall not touch the wire or product shell when thundering or/and lightening.
- ⚠ Avoiding any abnormal conditions and damages, shall not disassemble the machine during operating.

1. After installation, please keep the machine vertical. Tilt or lie flatly may cause oil overflow. The machine efficiency may be affected if the circuit board is contaminated.
2. Shall not modify, disassemble or repair the machine arbitrarily. Any failure happens, please contact relevant technician in time.
3. When the machine is out of the working period, the display is still on but the machine stops working.
4. It is invalid to touch/tap button when machine is under lock status. No light or display on the screen.

## TROUBLESHOOTING

Before asking to have the machine repaired, please try to diagnose the problem first following to below instructions.

Symptom	Remedy
Does not diffuse	-Check the power is on or off ; -If the machine is in "not working period", it stops diffuse; -The pump is damaged, change a new one.
Spray little	-Atomized nozzle may be blocked, diffuse with alcohol to do cleaning ; -Pump is aging, change a new one.
Spray liquid	-Atomized nozzle is damaged, change a new one; -Machine is tilted or lay flat, please make it stand on end.
Oil spill	-Bottle is loose, screw it to the right place.
Abnormal sound	-Pump is loose, install it correctly.

## EQUIPMENT CLEANING

**The machine needs to be cleaned when below situations happen:**

1. You're about to change to another essential oil;
2. The atomization volume becomes weak .

### Cleaning steps:

1. Find a clean bottle and fill it with industrial alcohol.
2. Install this bottle to the machine and turn the machine on. Let it work for 5-10 minutes.
3. Turn off the electric, finish the cleaning.

### FCC Statement

This equipment has been tested and found to comply with the limits for a Class B digital device, pursuant to part 15 of the FCC Rules. These limits are designed to provide reasonable protection against harmful interference in a residential installation. This equipment generates, uses and can radiate radio frequency energy and, if not installed and used in accordance with the instructions, may cause harmful interference to radio communications. However, there is no guarantee that interference will not occur in a particular installation. If this equipment does cause harmful interference to radio or television reception, which can be determined by turning the equipment off and on, the user is encouraged to try to correct the interference by one or more of the following measures:

- Reorient or relocate the receiving antenna.
- Increase the separation between the equipment and receiver.
- Connect the equipment into an outlet on a circuit different from that to which the receiver is connected.
- Consult the dealer or an experienced radio/TV technician for help.

Caution: Any changes or modifications to this device not explicitly approved by manufacturer could void your authority to operate this equipment.

This device complies with part 15 of the FCC Rules. Operation is subject to the following two conditions: (1) This device may not cause harmful interference, and (2) this device must accept any interference received, including interference that may cause undesired operation.

### RF Exposure Information

This equipment complies with FCC radiation exposure limits set forth for an uncontrolled environment. This equipment should be installed and operated with minimum distance 20cm between the radiator and your body.

This product can be used across EU member states.

### Specifications

Hardware Version: V1.00

Software Version: V1.0

Bluetooth Version: V5.0

Bluetooth Frequency: 2402MHz ~ 2480MHz

Receiver category: 2

Manufacturer: Guangzhou Chiyang Scent Technology Co., LTD.  
Address: 4F, Building C5, Gaosha Industrial Estate, Zhongyi Village, Zhongcun Town, Panyu Guangzhou, Guangdong, 511495 China

Adapter shall be installed near the equipment and shall be easily accessible.

The plug considered as disconnect device of adapter (Manufacturer: Guangzhou Chiyang Scent Technology Co., LTD.)

Travel Charger Model: RXW-0698-12V1A-E

Input: 100-240V~, 50/60Hz, 0.5A; For Adapter Output: 12V 1A)

The plug considered as disconnect device of adapter

Extreme temperature: -10-45℃