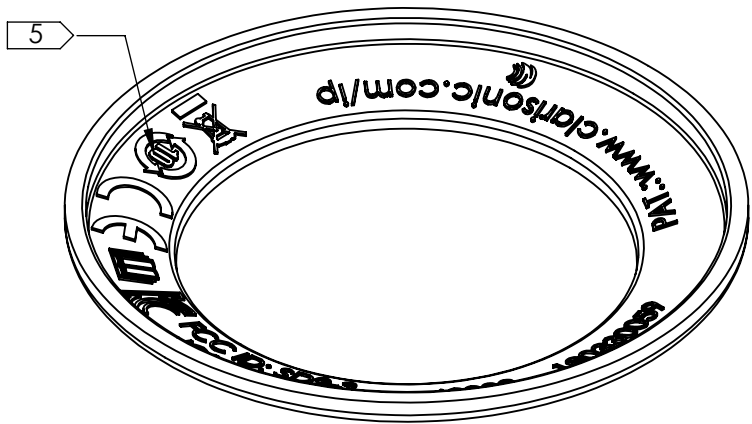
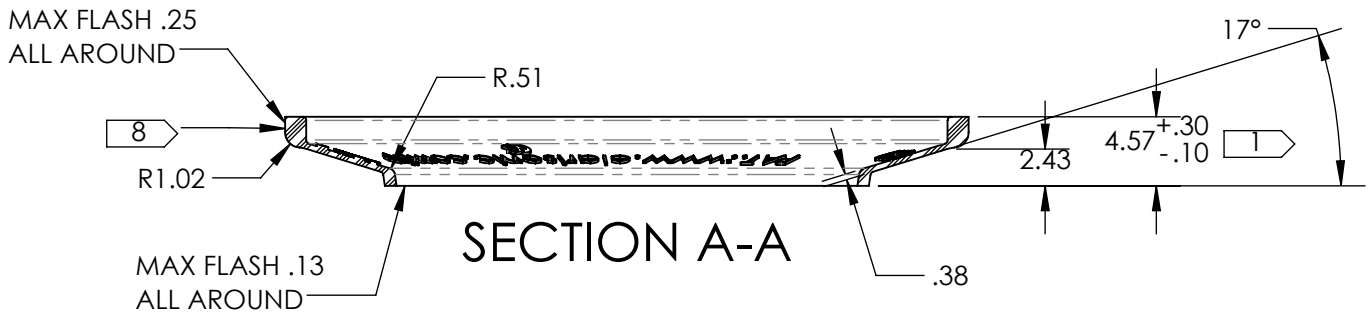
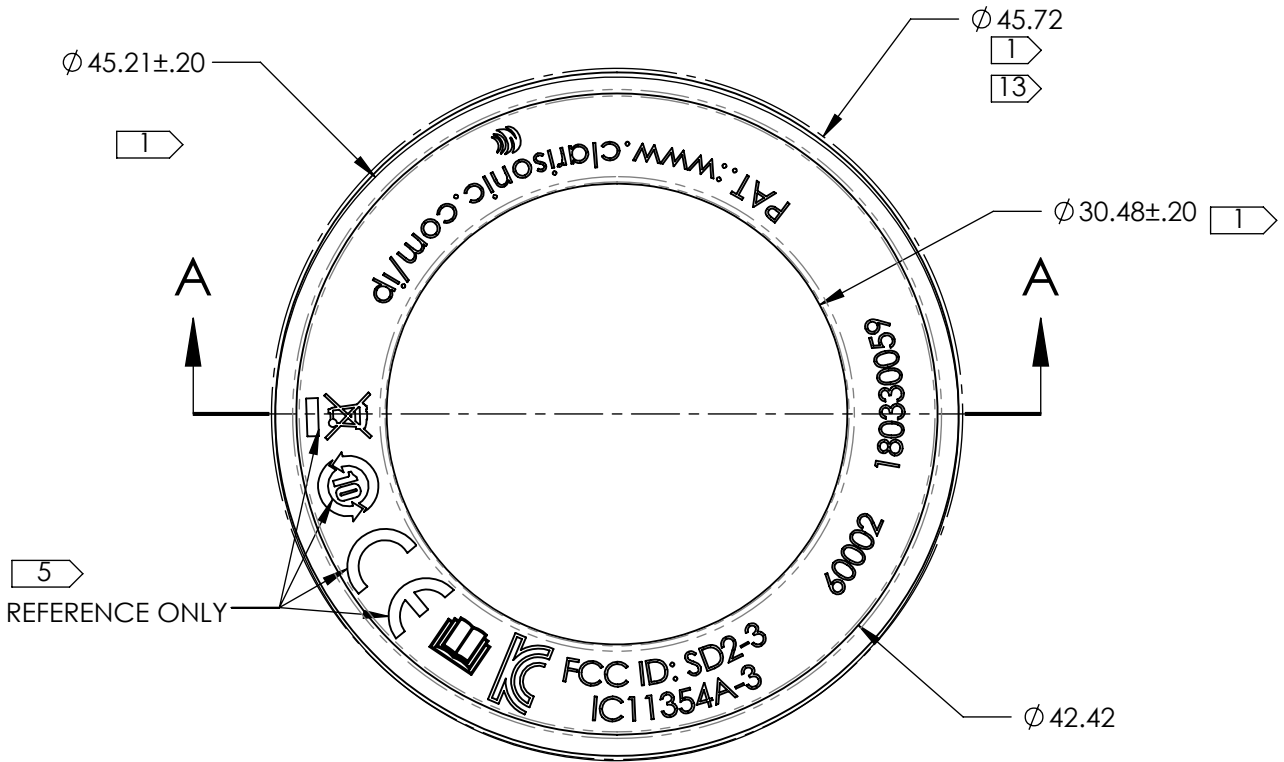


NOTES: UNLESS OTHERWISE SPECIFIED

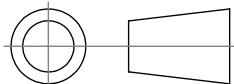
1. KEY CHARACTERISTIC.
2. MATERIAL: POLYPROPYLENE, RANDOM COPOLYMER, LYONDELL BASELL INDUSTRIES, PRO-FAX RP448S.
- COLOR: GENERAL COLOR GPCX-3400 OPAQUE GRAY.
3. REFER TO CAD MODEL FOR UNSPECIFIED SHAPES, FEATURES, AND DRAFT ANGLES. UNLESS OTHERWISE SPECIFIED, ALL FEATURES TO BE WITHIN .15 OF CAD GEOMETRY.
4. EXTERIOR SURFACE TEXTURE: SPI B1 OR BETTER.
5. FOR COMPLETE ARTWORK REFERENCE:
- 5001107- ARTWORK, BRUSH RING, MIA SMART
 - "CE" MARK (5mm MIN) AND OTHER GRAPHICS ARE PER ARTWORK.
6. ALL FILLET AND CORNER RADII SHOWN SHARP SHALL BE R.25 MAX EXCEPT AS NOTED.
7. NO REGRIND ALLOWED.
8. GATE LOCATION TO BE MUTUALLY AGREED UPON BY PBL ENGINEERING AND TOOLER. GATE LOCATION APPROXIMATELY WHERE SHOWN.
9. GATE VESTIGE: 0.13 MAX.
10. FLASH: 0.12 MAX.
11. EJECTOR PIN IMPRESSIONS +0.00/-0.12 ALLOWED ON THIS SIDE ONLY.
12. IDENTIFY EACH MOLD CAVITY USING A LETTER (ALPHA) AND NUMBER SUPPLIED BY PBL. PBL ENGINEERING.
13. ENTIRE PERIMETER OF PART, INCLUDING FLASH, GATE VESTIGE, AND ANY OTHER PROTRUSIONS MUST FALL WITHI THIS DIAMETER.
14. GAGES AND FIXTURES USED FOR INSPECTION MUST BE APPROVED BY PBL ENGINEERING.
15. THE ITEMS DESCRIBED ON THIS DRAWING ARE APPROVED BY PBL CORPORATION. AN ALTERNATE DESIGN OR MATERIAL SHALL NOT BE USED WITHOUT PRIOR TESTING AND WRITTEN APPROVAL BY PBL ENGINEERING.
16. PART TO MEET FOLLOWING REQUIREMENTS:
- 70000 PBL GENERAL SUPPLIER REQUIREMENTS
 - 70014 PBL ACCEPTANCE FOR COSMETIC DEFECTS
 - RoHS 2, PAH (GERMANY), & CA PROPOSITION 65

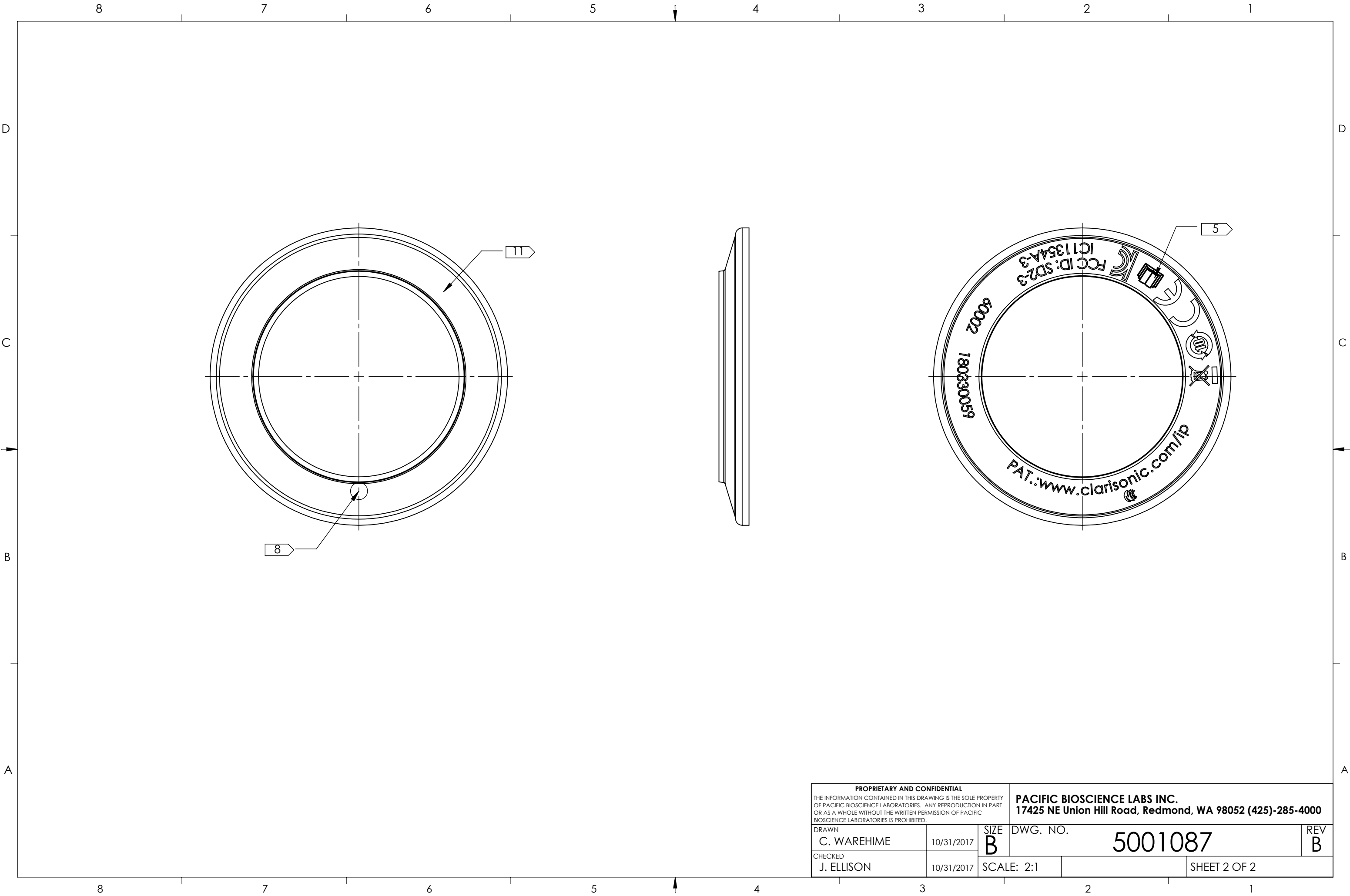


REVISIONS				
REV	DESCRIPTION	DATE	DRAWN	APPROVED
A	ORIENTATION OF PARTIAL LOGOS	1/29/2018	CW	WEB
B	UPDATE HEIGHT TOLERANCE	3/21/2018	C	WEB



PROPRIETARY AND CONFIDENTIAL
THE INFORMATION CONTAINED IN THIS DRAWING IS THE SOLE PROPERTY OF PACIFIC BIOSCIENCE LABORATORIES. ANY REPRODUCTION IN PART OR AS A WHOLE WITHOUT THE WRITTEN PERMISSION OF PACIFIC BIOSCIENCE LABORATORIES IS PROHIBITED.

<div>UNLESS OTHERWISE SPECIFIED:</div> <div>DIMENSIONS ARE IN MILLIMETERS</div> <div>TOLERANCES:</div> <div>DECIMALS:</div> <div>X ± 0.5</div> <div>X.X = ±0.2</div> <div>X.XX = ±0.10</div> <div>ANGLES: ± 2°</div> <div></div>	APPROVALS		DATE		<div>PACIFIC BIOSCIENCE LABS INC.</div> <div>17425 NE Union Hill Road, Redmond, WA 98052 (425)-285-4000</div>			
	DRAWN C. WAREHIME		10/31/2017					
	CHECKED J. ELLISON		10/31/2017		TITLE: BRUSH RING, MIA SMART			
	ENG APPR. B. BRYANT		10/31/2017					
	DO NOT SCALE DRAWING		SIZE B	DWG. NO. 5001087			REV B	
	INTERPRET PER ASME Y-14.5-2009		SCALE: 2:1		SHEET 1 OF 2			



PROPRIETARY AND CONFIDENTIAL THE INFORMATION CONTAINED IN THIS DRAWING IS THE SOLE PROPERTY OF PACIFIC BIOSCIENCE LABORATORIES. ANY REPRODUCTION IN PART OR AS A WHOLE WITHOUT THE WRITTEN PERMISSION OF PACIFIC BIOSCIENCE LABORATORIES IS PROHIBITED.			PACIFIC BIOSCIENCE LABS INC. 17425 NE Union Hill Road, Redmond, WA 98052 (425)-285-4000		
DRAWN C. WAREHIME	10/31/2017	SIZE B	DWG. NO. 5001087		REV B
CHECKED J. ELLISON	10/31/2017	SCALE: 2:1	SHEET 2 OF 2		