



检测报告

编号: SZXPC24000563901

日期: 2024 年 03 月 13 日

第 1 页, 共 8 页

客户名称: 肇庆市汇乾坤电子科技有限公司
客户地址: 广东省肇庆市端州区端州工业城东湖一路第五幢

样品名称: 无线充隔磁片
材质牌号: 锰锌铁氧体
型号: 无线充隔磁片

以上样品及信息由客户提供。

SGS 工作编号: SZPC2403001074
收样日期: 2024 年 03 月 07 日
检测周期: 2024 年 03 月 07 日 ~ 2024 年 03 月 13 日
检测要求: 根据客户要求检测
检测方法: 见后续页。
检测结果: 见后续页。

检测要求	结论
欧盟 RoHS 指令 2011/65/EU 附录 II 的修正指令(EU) 2015/863-铅、汞、镉、六价铬、多溴联苯 (PBB)、多溴二苯醚 (PBDE)、邻苯二甲酸二(2-乙基己基)酯 (DEHP)、邻苯二甲酸丁苄酯 (BBP)、邻苯二甲酸二丁酯 (DBP)和邻苯二甲酸二异丁酯 (DIBP)	符合

通标标准技术服务有限公司深圳分公司
授权签名

石常福

Ford Shi 石常福
批准签署人

扫码查看在线报告



SZPC24000563901
报告真伪请访问
check.sgs.com.cn



Unless otherwise agreed in writing, this document is issued by the Company subject to its General Conditions of Service printed overleaf, available on request or accessible at <http://www.sgs.com/en/Terms-and-Conditions.aspx> and, for electronic format documents, subject to Terms and Conditions for Electronic Documents at <http://www.sgs.com/en/Terms-and-Conditions/Terms-e-Documents.aspx>. Attention is drawn to the limitation of liability, indemnification and jurisdiction issues defined therein. Any holder of this document is advised that information contained hereon reflects the Company's findings at the time of its intervention only and within the limits of Client's instructions, if any. The Company's sole responsibility is to its Client and this document does not exonerate parties to a transaction from exercising all their rights and obligations under the transaction documents. This document cannot be reproduced except in full, without prior written approval of the Company. Any unauthorized alteration, forgery or falsification of the content or appearance of this document is unlawful and offenders may be prosecuted to the fullest extent of the law. Unless otherwise stated the results shown in this test report refer only to the sample(s) tested.
Attention: To check the authenticity of testing inspection report & certificate, please contact us at telephone: (86-755) 8307 1443, or email: CN.Doccheck@sgs.com
Box 101 201, Part 4 & Room 101, Part 2 & Room 101, Part 3 & Room 101, Part 1, Tonghe (Guangdong) Industrial Park (No. 43) 11th Road, Bantian Community, Bantian Street, Longgang District, Shenzhen, Guangdong, China 518122 www.sgs.com.cn
中国·广东·深圳市福田区新洲街道社区吉华路430号江源(源田)工业厂区厂房4号101-101, 2号101, 3号101, 3号301-501 邮编: 518122 (168-755) 25326828 sgs.china@sgs.com

Member of the SGS Group (SGS SA)



检测报告

编号: SZXPC24000563901

日期: 2024 年 03 月 13 日

第 2 页, 共 8 页

检测结果:

检测部件外观描述:

样品序号	样品编号	SGS 样品 ID	样品描述
SN1	001	SZX24-0005639-0001.C001	灰色物料

备注:

- (1) 1 mg/kg = 1 ppm = 0.0001%
- (2) MDL = 方法检测限
- (3) ND = 未检出 (< MDL)
- (4) "-" = 未规定

欧盟 RoHS 指令 2011/65/EU 附录 II 的修正指令(EU) 2015/863-铅、汞、镉、六价铬、多溴联苯 (PBB)、多溴二苯醚 (PBDE)、邻苯二甲酸二(2-乙基己基)酯 (DEHP)、邻苯二甲酸丁苄酯 (BBP)、邻苯二甲酸二丁酯 (DBP)和邻苯二甲酸二异丁酯 (DIBP)

检测方法: 参考 IEC 62321-4:2013+AMD1:2017, IEC 62321-5:2013, IEC 62321-7-2:2017, IEC 62321-6:2015 和 IEC 62321-8:2017, 采用 ICP-OES/AAS, UV-Vis 和 GC-MS 进行分析。

检测项目	限值	单位	MDL	001
铅 (Pb)	1000	mg/kg	2	ND
汞 (Hg)	1000	mg/kg	2	ND
镉 (Cd)	100	mg/kg	2	ND
六价铬 (Cr(VI))	1000	mg/kg	8	ND
多溴联苯之和 (PBB)	1000	mg/kg	-	ND
一溴联苯 (MonoBB)	-	mg/kg	5	ND
二溴联苯 (DiBB)	-	mg/kg	5	ND
三溴联苯 (TriBB)	-	mg/kg	5	ND
四溴联苯 (TetraBB)	-	mg/kg	5	ND
五溴联苯 (PentaBB)	-	mg/kg	5	ND
六溴联苯 (HexaBB)	-	mg/kg	5	ND
七溴联苯 (HeptaBB)	-	mg/kg	5	ND
八溴联苯 (OctaBB)	-	mg/kg	5	ND
九溴联苯 (NonaBB)	-	mg/kg	5	ND
十溴联苯 (DecaBB)	-	mg/kg	5	ND
多溴二苯醚之和 (PBDE)	1000	mg/kg	-	ND
一溴二苯醚 (MonoBDE)	-	mg/kg	5	ND
二溴二苯醚 (DiBDE)	-	mg/kg	5	ND
三溴二苯醚 (TriBDE)	-	mg/kg	5	ND
四溴二苯醚 (TetraBDE)	-	mg/kg	5	ND
五溴二苯醚 (PentaBDE)	-	mg/kg	5	ND
六溴二苯醚 (HexaBDE)	-	mg/kg	5	ND
七溴二苯醚 (HeptaBDE)	-	mg/kg	5	ND
八溴二苯醚 (OctaBDE)	-	mg/kg	5	ND



Unless otherwise agreed in writing, this document is issued by the Company subject to its General Conditions of Service printed overleaf, available on request or accessible at <http://www.sgs.com/en/Terms-and-Conditions.aspx> and, for electronic format documents, subject to Terms and Conditions for Electronic Documents at <http://www.sgs.com/en/Terms-and-Conditions/Terms-e-Documents.aspx>. Attention is drawn to the limitation of liability, indemnification and jurisdiction issues defined therein. Any holder of this document is advised that information contained hereon reflects the Company's findings at the time of its intervention only and within the limits of Client's instructions, if any. The Company's sole responsibility is to its Client and this document does not exonerate parties to a transaction from exercising all their rights and obligations under the transaction documents. This document cannot be reproduced except in full, without prior written approval of the Company. Any unauthorized alteration, forgery or falsification of the content or appearance of this document is unlawful and offenders may be prosecuted to the fullest extent of the law. Unless otherwise stated the results shown in this test report refer only to the sample(s) tested.

Attention: To check the authenticity of testing inspection report & certificate, please contact us at telephone: (86-755) 8307 1443, or email: CN.QCcheck@sgs.com

Room 1012, Part 44 Room 101, Part 21 Room 101, Part 14 Room 101-501, Part 1, Jiaojiao Building, Industrial Park Area No. 43, Hua Road, Bantian Community, Bantian Street, Longgang District, Shenzhen, Guangdong, China 518129 www.sgs.com

中国·广东·深圳市龙岗区坂田街道坂田社区吉华路43号101-501, 2号101, 3号101, 3号101-501 邮编: 518129 t:(86-755) 25326888 sgs.china@sgs.com

Member of the SGS Group (SGS SA)



检测报告

编号: SZXPC24000563901

日期: 2024 年 03 月 13 日

第 3 页, 共 8 页

检测项目	限值	单位	MDL	001
九溴二苯醚 (NonaBDE)	-	mg/kg	5	ND
十溴二苯醚 (DecaBDE)	-	mg/kg	5	ND
邻苯二甲酸二(2-乙基己基)酯 (DEHP)	1000	mg/kg	50	ND
邻苯二甲酸丁苄酯 (BBP)	1000	mg/kg	50	ND
邻苯二甲酸二丁酯 (DBP)	1000	mg/kg	50	ND
邻苯二甲酸二异丁酯 (DIBP)	1000	mg/kg	50	ND

备注:

(1) 最大允许极限值引用自 RoHS 指令(EU) 2015/863。

(2) IEC 62321 系列等同于 EN 62321 系列。

(3) 2021 年 7 月 22 号开始, DEHP, BBP, DBP 和 DIBP 的限制适用于医疗器械, 包括体外医疗器械, 监控仪表, 包括工业监测和控制仪器。

除非另有说明, 参照 ILAC-G8:09/2019, 使用简单接受 ($w=0$) 的二元判定规则进行符合性判定。

除非另有说明, 此报告结果仅对检测的样品负责。本报告未经本公司书面许可, 不可部分复制。

检测报告仅用于客户科研、教学、内部质量控制、产品研发等目的, 仅供内部参考。

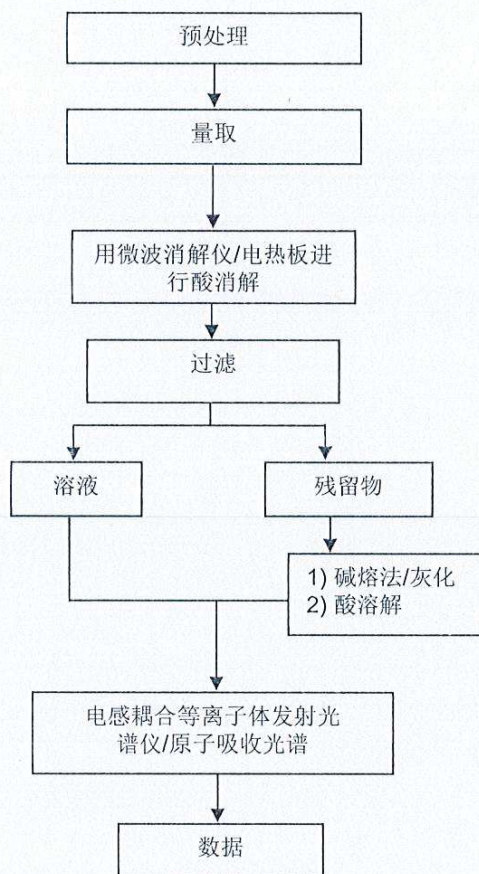


Unless otherwise agreed in writing, this document is issued by the Company subject to its General Conditions of Service printed overleaf, available on request or accessible at <http://www.sgs.com/en/Terms-and-Conditions.aspx> and, for electronic format documents, subject to Terms and Conditions for Electronic Documents at <http://www.sgs.com/en/Terms-and-Conditions/Terms-e-Document.aspx>. Attention is drawn to the limitation of liability, indemnification and jurisdiction issues defined therein. Any holder of this document is advised that information contained hereon reflects the Company's findings at the time of its intervention only and within the limits of Client's instructions, if any. The Company's sole responsibility is to its Client and this document does not exonerate parties to a transaction from exercising all their rights and obligations under the transaction documents. This document cannot be reproduced except in full, without prior written approval of the Company. Any unauthorized alteration, forgery or falsification of the content or appearance of this document is unlawful and offenders may be prosecuted to the fullest extent of the law. Unless otherwise stated the results shown in this test report refer only to the sample(s) tested.
Attention: To check the authenticity of testing inspection report & certificate, please contact us at telephone: (86-755) 8307 1443, or email: CN.Doccheck@sgs.com
Room 101-201, Part 44 Room 101, Part 23 Room 101, Part 13 Room 201-501, Part 3, Jiahua Industrial Park Area No. 438, Huaifeng, Baishan Community, Baishan Street, Longgang District, Shenzhen, Guangdong China 518129 www.sgs.com.cn
中国·广东·深圳市龙岗区坂田街道坂田社区吉华路430号立源(坂田)工业厂区厂房4号101-201、2号101、3号101、3号101-501 邮编:518129 (86-755) 25326888 sgs.china@sgs.com

Member of the SGS Group (SGS SA)

元素检测流程图

样品按照下述流程被完全消解



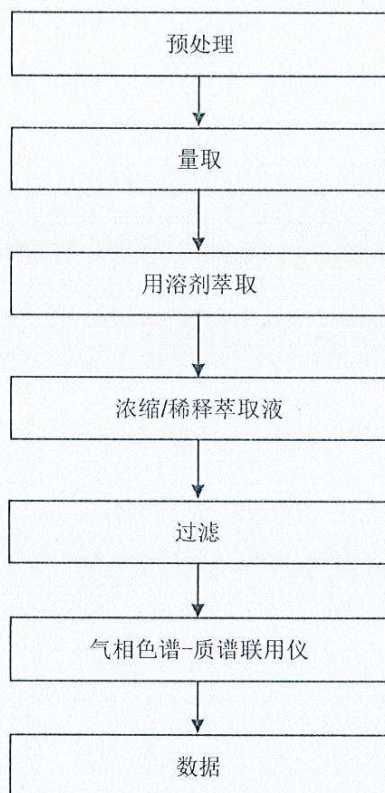
Unless otherwise agreed in writing, this document is issued by the Company subject to its General Conditions of Service printed overleaf, available on request or accessible at <http://www.sgs.com/en/Terms-and-Conditions.aspx> and, for electronic format documents, subject to Terms and Conditions for Electronic Documents at <http://www.sgs.com/en/Terms-and-Conditions/Terms-e-Document.aspx>. Attention is drawn to the limitation of liability, indemnification and jurisdiction issues defined therein. Any holder of this document is advised that information contained hereon reflects the Company's findings at the time of its intervention only and within the limits of Client's instructions, if any. The Company's sole responsibility is to its Client and this document does not exonerate parties to a transaction from exercising all their rights and obligations under the transaction documents. This document cannot be reproduced except in full, without prior written approval of the Company. Any unauthorized alteration, forgery or falsification of the content or appearance of this document is unlawful and offenders may be prosecuted to the fullest extent of the law. Unless otherwise stated the results shown in this test report refer only to the sample(s) tested.

Attention: To check the authenticity of testing inspection report & certificate, please contact us at telephone: (86-755) 8307 1443, or email: CN.Qaccheck@sgs.com

Room 104-201, Part 44 Room 101, Part 24 Room 101, Part 34 Room 101-501, Part 3, Jiaogan-Banlan Industrial Park Area No. 436, Jiaogan Road, Banlan Community, Banlan Street, Longgang District, Shenzhen, Guangdong, China 518129 www.sgs.com

中国·广东·深圳市龙岗区坂田街道社区吉华路436号101-501、2号101、3号101、3号101-501 邮编: 518129 1(86-755) 253226888 sgs.china@sgs.com

PBB/PBDE 检测流程图



SGS-China (Shanghai) Technical Services Co., Ltd.
Shanghai Branch of SGS-China (Shanghai) Technical Services Co., Ltd.

Unless otherwise agreed in writing, this document is issued by the Company subject to its General Conditions of Service printed overleaf, available on request or accessible at <http://www.sgs.com/en/Terms-and-Conditions.aspx> and, for electronic format documents, subject to Terms and Conditions for Electronic Documents at <http://www.sgs.com/en/Terms-and-Conditions/Terms-e-Document.aspx>. Attention is drawn to the limitation of liability, indemnification and jurisdiction issues defined therein. Any holder of this document is advised that information contained hereon reflects the Company's findings at the time of its intervention only and within the limits of Client's instructions, if any. The Company's sole responsibility is to its Client and this document does not exonerate parties to a transaction from exercising all their rights and obligations under the transaction documents. This document cannot be reproduced except in full, without prior written approval of the Company. Any unauthorized alteration, forgery or falsification of the content or appearance of this document is unlawful and offenders may be prosecuted to the fullest extent of the law. Unless otherwise stated the results shown in this test report refer only to the sample(s) tested.

Attention: To check the authenticity of testing/inspection report & certificate, please contact us at telephone: (86-755) 8307 1443, or email: CN.Doccheck@sgs.com

Room 101-201, Part 48 Room 101, Part 28 Room 101, Part 14 Room 101, Part 1, Jiaqiao Road, Jiaqiao Community, Jiaqiao Street, Longgang District, Shenzhen, Guangdong China 518129 www.sgs.com
中国·广东·深圳市龙岗区坂田街道社区吉华路40号101室(新馆) 工业厂区 房号101-201, 2号101, 3号101, 3号301-501 邮编: 518129 电话: (86-755) 25526888 sgs.china@sgs.com

检测报告

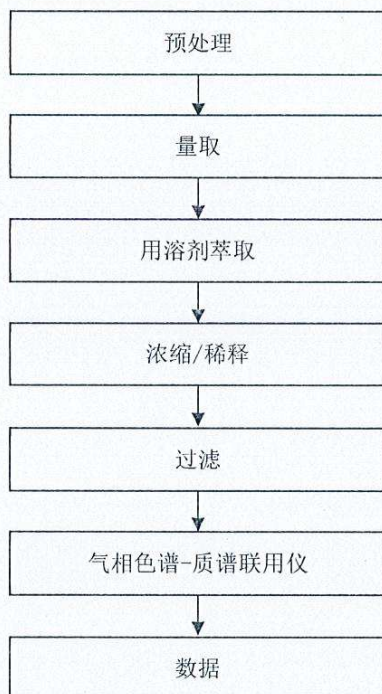
附件

编号: SZXPC24000563901

日期: 2024 年 03 月 13 日

第 7 页, 共 8 页

Phthalates 检测流程图



Unless otherwise agreed in writing, this document is issued by the Company subject to its General Conditions of Service printed overleaf, available on request or accessible at <http://www.sgs.com/en/Terms-and-Conditions.aspx> and, for electronic format documents, subject to Terms and Conditions for Electronic Documents at <http://www.sgs.com/en/Terms-and-Conditions/Terms-e-Document.aspx>. Attention is drawn to the limitation of liability, indemnification and jurisdiction issues defined therein. Any holder of this document is advised that information contained hereon reflects the Company's findings at the time of its intervention only and within the limits of Client's instructions, if any. The Company's sole responsibility is to its Client and this document does not exonerate parties to a transaction from exercising all their rights and obligations under the transaction documents. This document cannot be reproduced except in full, without prior written approval of the Company. Any unauthorized alteration, forgery or falsification of the content or appearance of this document is unlawful and offenders may be prosecuted to the fullest extent of the law. Unless otherwise stated the results shown in this test report refer only to the sample(s) tested.

Attention: To check the authenticity of testing/inspection report & certificate, please contact us at telephone: (86-755) 8107 4443, or email: CN.Doccheck@sgs.com

Room 101/201, Part 44 Room 101, Part 24 Room 101, Part 24 Room 201/501, Part 2, Jieqiao Building, Industrial Park Area No. 430, Hua Road, Bantian Community, Bantian Street, Longgang Sub-district, Shenzhen, Guangdong, China 518129 www.sgs.com

中国·广东·深圳市龙岗区坂田街道坂田社区吉华路430号工业园(坂田)工业厂区厂房4号101-201、2号101、3号101、3号101-501 邮编:518129 t:(86-755)25328888 sgs.china@sgs.com

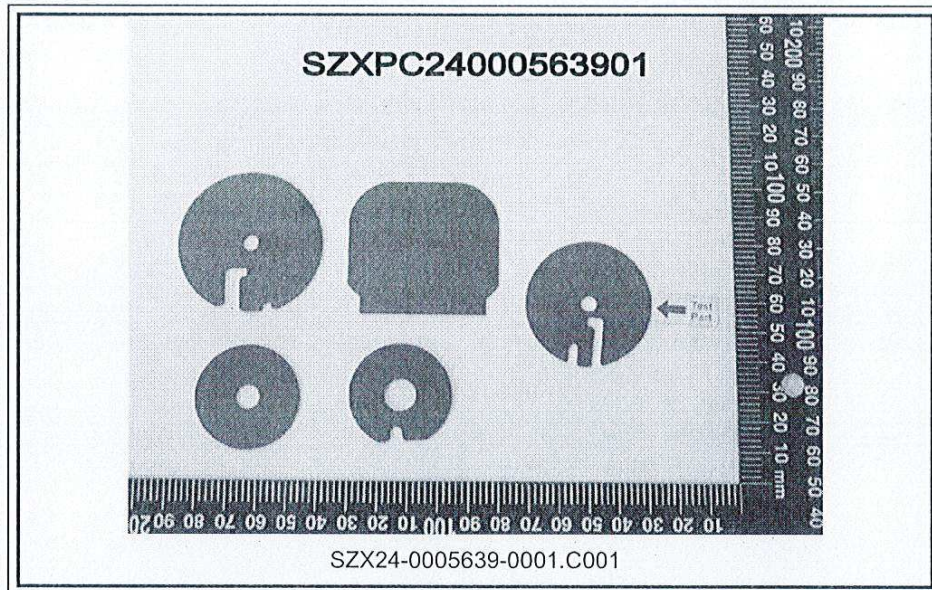
检测报告

编号: SZXPC24000563901

日期: 2024 年 03 月 13 日

第 8 页, 共 8 页

样品照片:



此照片仅限于随 SGS 正本报告使用

报告结束



Unless otherwise agreed in writing, this document is issued by the Company subject to its General Conditions of Service printed overleaf, available on request or accessible at <http://www.sgs.com/en/Terms-and-Conditions.aspx> and, for electronic format documents, subject to Terms and Conditions for Electronic Documents at <http://www.sgs.com/en/Terms-and-Conditions/Terms-e-Document.aspx>. Attention is drawn to the limitation of liability, indemnification and jurisdiction issues defined therein. Any holder of this document is advised that information contained hereon reflects the Company's findings at the time of its intervention only and within the limits of Client's instructions, if any. The Company's sole responsibility is to its Client and this document does not exonerate parties to a transaction from exercising all their rights and obligations under the transaction documents. This document cannot be reproduced except in full, without prior written approval of the Company. Any unauthorized alteration, forgery or falsification of the content or appearance of this document is unlawful and offenders may be prosecuted to the fullest extent of the law. Unless otherwise stated the results shown in this test report refer only to the sample(s) tested.

Attention: To check the authenticity of testing/inspection report & certificate, please contact us at telephone: (86-755) 8307 1443, or email: CN.Doccheck@sgs.com

Room 501-507, Part 44 Room 101, Part 28 Room 101, Part 14 Room 101, Part 1, Jianshe (Building) Industrial Park Area No. 40, Jianshe Road, Bantian Community, Bantian Street, Longgang District, Shenzhen, Guangdong, China 518129 www.sgs.com

中国·广东·深圳市龙岗区坂田街道社区吉华路40号江苏（坂田）工业厂区厂房号101-501, 2号101, 3号101, 3号301-501 邮编: 518129 (86-755) 25326888 sgs.china@sgs.com



检测报告

编号: SZXEC24002391204_1

日期: 2024 年 09 月 19 日

第 1 页, 共 5 页

客户名称: 诚信漆包线(惠州)有限公司 / 广东省佛山市环宸磁电科技有限公司
客户地址: 惠州市惠澳大道惠南高新科技产业园金钟路 19 号 A7 栋 / 广东省佛山市顺德区北滘镇西海村北围工业大道 11 号厂房二之二

样品名称: 丝包绞线
客户参考信息: UDATC *UEW/ UDHTC *UEW
以上样品及信息由客户提供。

此报告替代原来编号为 SZXEC24002391204, 日期为 2024 年 07 月 31 日的报告。

SGS 工作编号: SZP24-033167
样品接收时间: 2024 年 07 月 26 日
检测周期: 2024 年 07 月 26 日 ~ 2024 年 07 月 31 日
检测要求: 根据客户要求检测
检测方法: 见后续页。
检测结果: 见后续页。

检测要求	结论
欧盟 RoHS 指令 2011/65/EU 附录 II 的修正指令(EU) 2015/863 - 铅、汞、镉和六价铬	符合

通标标准技术服务有限公司深圳分公司
授权签名

石常福

Ford Shi 石常福
批准签署人

scan to see the report



12FAE2A1



Unless otherwise agreed in writing, this document is issued by the Company subject to its General Conditions of Service printed overleaf, available on request or accessible at <http://www.sgs.com/en/Terms-and-Conditions.aspx> and, for electronic format documents, subject to Terms and Conditions for Electronic Documents at <http://www.sgs.com/en/Terms-and-Conditions/Terms-e-Documents.aspx>. Attention is drawn to the limitation of liability, indemnification and jurisdiction issues defined therein. Any holder of this document is advised that information contained hereon reflects the Company's findings at the time of its intervention only and within the limits of Client's instructions, if any. The Company's sole responsibility is to its Client and this document does not exonerate parties to a transaction from exercising all their rights and obligations under the transaction documents. This document cannot be reproduced except in full, without prior written approval of the Company. Any unauthorized alteration, forgery or falsification of the content or appearance of this document is unlawful and offenders may be prosecuted to the fullest extent of the law. Unless otherwise stated the results shown in this test report refer only to the sample(s) tested.
Attention: To check the authenticity of testing/inspection report & certificate, please contact us at telephone: (86-755) 8307 1443, or email: CH.Decheur@sgs.com
Room 101, Plant 4 Room 101, Plant 14 Room 101, Plant 3 Room 101, Plant 1, Donghai (Shenzhen) Industrial Plant Area No. 40, Jia Road, Bantian Community, Bantian Street, Longgang District, Shenzhen, Guangdong, China 518129 www.sgs.com
中国·广东·深圳市龙岗区坂田街道坂田社区吉华路40号工业(坂田)工业区厂房4号101-101、2号101、3号101-101 邮编:518129 电话:(86-755)25328888 sgs.china@sgs.com

Member of the SGS Group (SGS SA)



检测报告

编号: SZXEC24002391204_1

日期: 2024 年 09 月 19 日

第 2 页, 共 5 页

检测结果:

检测部件外观描述:

样品序号	样品编号	SGS 样品 ID	样品描述
SN1	A2	SZX24-0023912-0001.C002	红铜色金属丝

备注:

- (1) 1 mg/kg = 1 ppm = 0.0001%
- (2) MDL = 方法检出限
- (3) ND = 未检出 (< MDL)
- (4) "-" = 未规定

欧盟 RoHS 指令 2011/65/EU 附录 II 的修正指令(EU) 2015/863 - 铅、汞、镉和六价铬

检测方法: 参考 IEC 62321-4:2013+AMD1:2017, IEC 62321-5:2013 和 IEC 62321-7-1:2015, 采用 ICP-OES/AAS 和 UV-Vis 进行分析。

检测项目	限值	单位	MDL	A2
铅 (Pb)	1000	mg/kg	2	ND
汞 (Hg)	1000	mg/kg	2	ND
镉 (Cd)	100	mg/kg	2	ND
六价铬 (Cr(VI))▼	-	µg/cm²	0.10	ND

备注:

- (1) 最大允许极限值引用自 RoHS 指令(EU) 2015/863。
- (2) IEC 62321 系列等同于 EN 62321 系列。
- (3) ▼ =
 - a. 当六价铬的浓度高于 0.13 µg/cm² 时, 样品为阳性, 即含有六价铬;
 - b. 当六价铬的浓度为 ND (低于 0.10 µg/cm²) 时, 样品为阴性, 即未检测到六价铬;
 - c. 当六价铬的浓度介于 0.10 µg/cm² 与 0.13 µg/cm² 之间时, 无法直接判定是否检测到六价铬, 因不同个体的样品表面差异可能会影响测定结果。

由于未获知样品的存储条件和生产日期, 样品的六价铬检测结果仅能代表检测时样品含六价铬的状态。

备注: 本报告增加了客户参考信息。

除非另有说明, 参照 ILAC-G8:09/2019, 使用简单接受 ($w=0$) 的二元判定规则进行符合性判定。

除非另有说明, 此报告结果仅对检测的样品负责。本报告未经本公司书面许可, 不可部分复制。

检测报告仅用于客户科研、教学、内部质量控制、产品研发等目的, 仅供内部参考。



Unless otherwise agreed in writing, this document is issued by the Company subject to its General Conditions of Service printed overleaf, available on request or accessible at <http://www.sgs.com/en/Terms-and-Conditions.aspx> and, for electronic format documents, subject to Terms and Conditions for Electronic Documents at <http://www.sgs.com/en/Terms-and-Conditions/Terms-e-Document.aspx>. Attention is drawn to the limitation of liability, indemnification and jurisdiction issues defined therein. Any holder of this document is advised that information contained hereon reflects the Company's findings at the time of its intervention only and within the limits of Client's instructions, if any. The Company's sole responsibility is to its Client and this document does not exonerate parties to a transaction from exercising all their rights and obligations under the transaction documents. This document cannot be reproduced except in full, without prior written approval of the Company. Any unauthorized alteration, forgery or falsification of the content or appearance of this document is unlawful and offenders may be prosecuted to the fullest extent of the law. Unless otherwise stated the results shown in this test report refer only to the sample(s) tested.

Attention: To check the authenticity of testing/inspection report & certificate, please contact us at telephone: (86-755) 8307 1443, or email: CN.Doccheck@sgs.com

Room 121-201, Plant 44 Room 101, Plant 24 Room 101, Plant 14 Room 101, Plant 13, Jiangnan Industrial Park Area No. 438, Jiusi Road, Baotian Community, Baotian Street, Longgang District, Shenzhen, Guangdong China 518129 www.sgs.com

中国·广东·深圳市龙岗区坂田街道社区吉华路438号江澜(坂田)工业厂区4号101-104、2号101、3号101-501 邮编:518129 t:(86-755) 25326888 sgs.china@sgs.com

Member of the SGS Group (SGS SA)

检测报告

编号: SZXEC24002391204_1

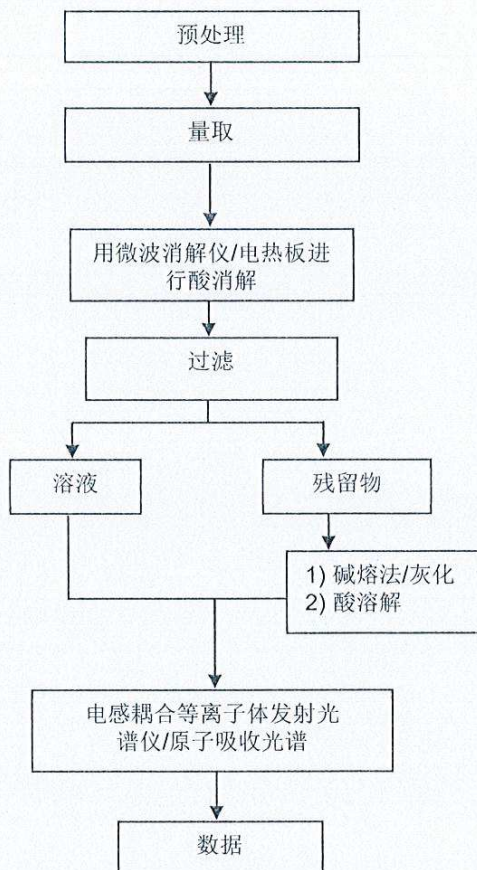
日期: 2024 年 09 月 19 日

第 3 页, 共 5 页

附件

元素检测流程图

样品按照下述流程被完全消解



Unless otherwise agreed in writing, this document is issued by the Company subject to its General Conditions of Service printed overleaf, available on request or accessible at <http://www.sgs.com/en/Terms-and-Conditions.aspx> and, for electronic format documents, subject to Terms and Conditions for Electronic Documents at <http://www.sgs.com/en/Terms-and-Conditions/Terms-e-Document.aspx>. Attention is drawn to the limitation of liability, indemnification and jurisdiction issues defined therein. Any holder of this document is advised that information contained hereon reflects the Company's findings at the time of its intervention only and within the limits of Client's instructions, if any. The Company's sole responsibility is to its Client and this document does not exonerate parties to a transaction from exercising all their rights and obligations under the transaction documents. This document cannot be reproduced except in full, without prior written approval of the Company. Any unauthorized alteration, forgery or falsification of the content or appearance of this document is unlawful and offenders may be prosecuted to the fullest extent of the law. Unless otherwise stated the results shown in this test report refer only to the sample(s) tested.

Attention: To check the authenticity of testing / inspection report & certificate, please contact us at telephone: (86-755) 8307 1443, or email: CN Doccheck@sgs.com

Room 101-201, Plant 4, Room 101, Plant 1 & Room 101, Plant 1 & Room 201-201, Plant 1, Jiangnan Industrial Park Area No. 436, Jiuhe Road, Bantian Community, Bantian Street, Longgang District, Shenzhen, Guangdong China 518129 www.sgs.com

中国·广东·深圳市龙岗区坂田街道坂田社区吉华路436号(坂田)工业厂区厂房4号101-201, 2号101, 3号101-501 邮编: 518129 (86-755) 25326888 sgs.china@sgs.com

检测报告

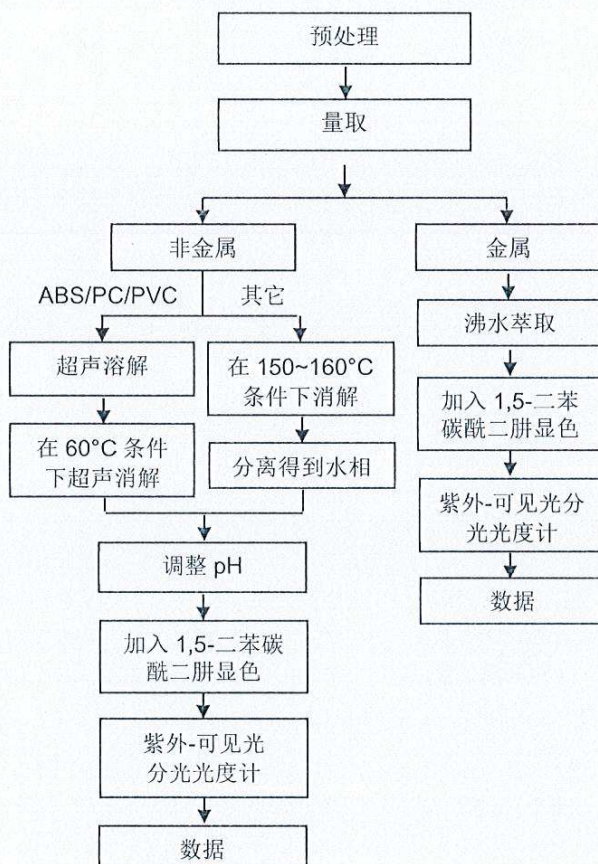
附件

编号: SZXEC24002391204_1

日期: 2024 年 09 月 19 日

第 4 页, 共 5 页

六价铬检测流程图



Unless otherwise agreed in writing, this document is issued by the Company subject to its General Conditions of Service printed overleaf, available on request or accessible at <http://www.sgs.com/en/Terms-and-Conditions.aspx> and, for electronic format documents, subject to Terms and Conditions for Electronic Documents at <http://www.sgs.com/en/Terms-and-Conditions/Terms-e-Documents.aspx>. Attention is drawn to the limitation of liability, indemnification and jurisdiction issues defined therein. Any holder of this document is advised that information contained hereon reflects the Company's findings at the time of its intervention only and within the limits of Client's instructions, if any. The Company's sole responsibility is to its Client and this document does not exonerate parties to a transaction from exercising all their rights and obligations under the transaction documents. This document cannot be reproduced except in full, without prior written approval of the Company. Any unauthorized alteration, forgery or falsification of the content or appearance of this document is unlawful and offenders may be prosecuted to the fullest extent of the law. Unless otherwise stated the results shown in this test report refer only to the sample(s) tested.

Attention: To check the authenticity of testing/inspection report & certificate, please contact us at telephone: (86-755) 8307 1443, or email: CN.Doccheck@sgs.com

Room 101-201, Plant 4 Room 101, Plant 10 Room 101, Plant 10 Room 101, Plant 10, Yantian Road Industrial Park Area No. 408, Yantian Road, Yantian Community, Yantian District, Shenzhen, Guangdong China 518129 www.sgs.com.cn

中国·广东·深圳市龙岗区坂田街道坂田社区吉华路408号101室(坂田) 工业厂区厂房4号101-201, 2号101, 3号101, 3号101-501 邮编: 518129 (86-755) 25322888 sgs.china@sgs.com

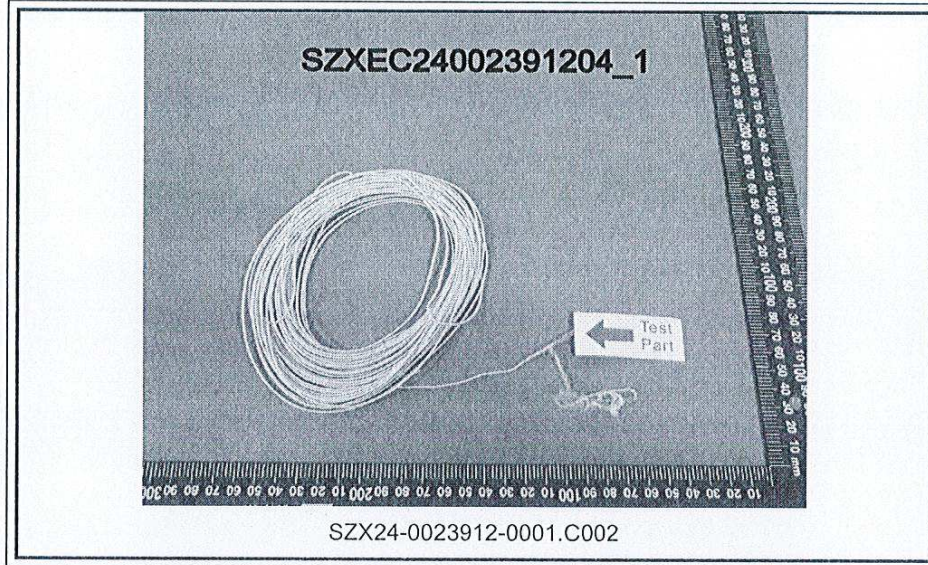
检测报告

编号: SZXEC24002391204_1

日期: 2024 年 09 月 19 日

第 5 页, 共 5 页

样品照片:



此照片仅限于随 SGS 正本报告使用

报告结束



Unless otherwise agreed in writing, this document is issued by the Company subject to its General Conditions of Service printed overleaf, available on request or accessible at <http://www.sgs.com/en/Terms-and-Conditions.aspx> and, for electronic format documents, subject to Terms and Conditions for Electronic Documents at <http://www.sgs.com/en/Terms-and-Conditions/Terms-e-Documents.aspx>. Attention is drawn to the limitation of liability, indemnification and jurisdiction issues defined therein. Any holder of this document is advised that information contained hereon reflects the Company's findings at the time of its intervention only and within the limits of Client's instructions, if any. The Company's sole responsibility is to its Client and this document does not exonerate parties to a transaction from exercising all their rights and obligations under the transaction documents. This document cannot be reproduced except in full, without prior written approval of the Company. Any unauthorized alteration, forgery or falsification of the content or appearance of this document is unlawful and offenders may be prosecuted to the fullest extent of the law. Unless otherwise stated the results shown in this test report refer only to the sample(s) tested.

Attention: To check the authenticity of testing/inspection report & certificate, please contact us at telephone: (86-755) 8307 1443, or email: CN.Doccheck@sgs.com

Room 102-101, Plant 44 Room 101, Plant 24 Room 101, Plant 24 Room 301-301, Plant 1, Jieqian Road, Bantian Community, Bantian Street, Longgang District, Shenzhen, Guangdong, China 518129 www.sgs.com.cn

中国·广东·深圳市龙岗区坂田街道社区吉华路410号正源(银田)工业厂区厂房4号101-101, 2号101, 3号101, 3号101-501 邮编: 518129 t:(86-755) 25326888 sgs.china@sgs.com