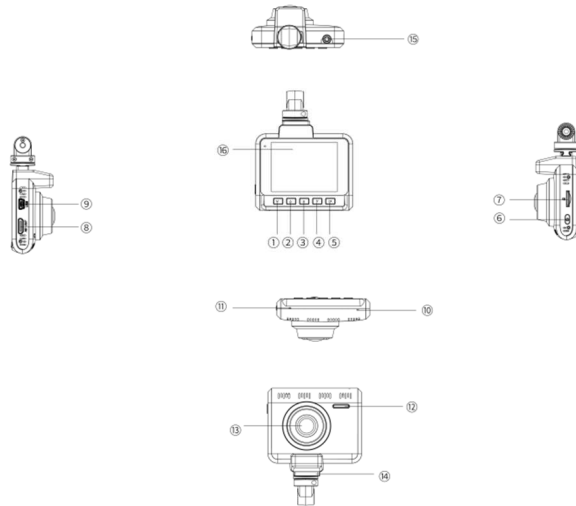


1. Product Illustration
2. Keys and Functions
3. Installation
3. Charging
4. Shooting Videos /Videos Playback
5. Menu Setting Instruction
6. Product Specification
7. GPS Player Software Installation and Instruction
8. Steps to Install APP on Smart Phone
9. WI-FI Connection Instruction
10. FAQ

## 1. Product Illustration



- |               |             |                 |                 |
|---------------|-------------|-----------------|-----------------|
| 1 ) Menu/Mode | 2 ) Up      | 3) SOS/Wi-Fi    | 4 ) Down        |
| 5 ) OK        | 6 ) Power   | 7 ) TF slot     | 8 ) HD OUT      |
| 9 ) USB port  | 10 ) MIC    | 11) Reset       | 12 ) Speaker    |
| 13 ) Lens     | 14 ) Holder | 15 ) AV IN port | 16 ) LCD screen |

## 2. Keys and Functions

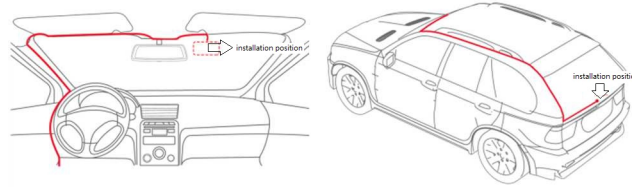
Key	Function	Instruction
Power	Power on / off	1.Power on: Short press for power on and screen saver or light screen 2.Power off : Long press for power off
Reset	Reset	Reboot the dash cam at any case
OK	Start/Stop recording Confirm setting Take photo/Playback	1.Record mode : short press to start/stop recording 2. Photo mode : short press to take photo 3. Menu mode : confirm setting 4. Playback mode: short press to playback
Menu/ Mode	Mode switch Menu setting	1. Mode switch: long press to switch playback mode 2.Menu setting : short press to switch the setting list
Up	Up/Mute/switch	1.Menu setting : up 2.Video mode : long press to mute; short press to switch front and rear display when it is recording with dual lens
Down	Down	1.Menu mode : down 2.Video mode : short press to take photo when it is recording
SOS	Lock videos / WI-FI	1.During recording, short press to lock current video; in video mode, short press to start a 20 seconds locked video 2.Long press to switch WI-FI

## 3. Installation

- Never install this product while driving.

- Install this product near the rear-view mirror to obtain the best open-field view. Do not install in a location that will obstruct your required driving view.
- Make sure that the lens is within the wiping range of the windscreen wiper to ensure a clear view even when it rains.
- Do not touch the lens with your fingers. Finger grease may be left on the lens and will result in unclear videos.

The installation diagram, as follows:



#### 4. Charging

- Car charger connects to the car cigarette lighter ;
- Connect USB cable to PC for charging
- The device will start up automatically and record as soon as power supplied, and the device will power off after cutting the power supply

#### 5. Shooting Videos/ Videos Playback

## Video Mode:

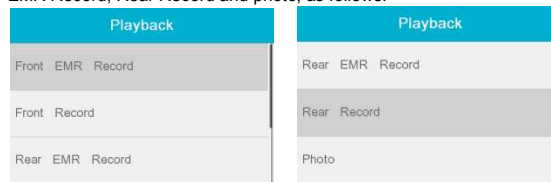
In the video mode, there is a video recording icon shown on the top left corner of the LCD; short press OK button to start recording, the red video indication light start to flash, that is the DVR is under recording, short press OK button again to stop recording, as follows:



**Attention :** Under the video mode, long press **up key** to mute or not; short press **SOS key** to lock current recording video during recording.

## Videos Playback

Long press **Menu key** to switch playback mode, the playback icon will be shown on the upper screen, and there will be 5 folders----Front EMR Record, Front Record, Rear EMR Record, Rear Record and photo, as follows:



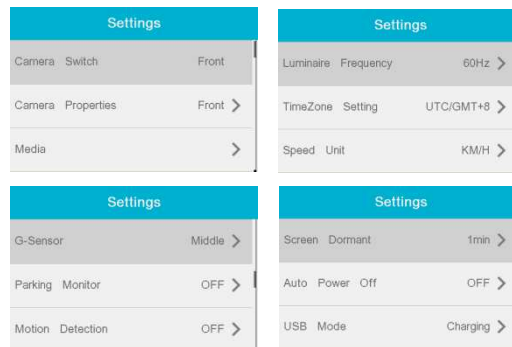
**Attention:** Choosing the folder that you want to playback, then click **OK key** to enter, taking **Front Record folder** for example, as follows:



It is easy to choose the video that you want to delete or playback, and it will confirm with you whether you are going to delete the videos before you deleting them. If you want to return to video mode, just needing to short press the **Menu key**.

## 6. Menu Setting Instruction

Short press **Menu Key** to enter the setting interface after power on, there will be more than 20 settings, as follows:



**Attention :**

Return to video mold by short press on **Menu key**.

## 7. Product Specification:

CPU	Hi3559V200
Sensor	8MP + 2MP
Lens	160°+ 130°, F 2.1 + F1.8
Screen	2.35 inch IPS TP
Video Resolution	1-CH 4K 3840*2160P/30FPS, 2-CH 4K 3840*2160P/30FPS + FHD 1920*1080P/30FPS
Photo Resolution	20M
Battery	250mAh
Dimension	75.2*64*43mm
Video Codec	H.265 , MP4
Color	Black
Loop Recording	seamless recording
Auto turn on/off while vehicle power on/off	Support turn on while vehicle starts. And turn off while vehicle shutdowns
Motion detection	Support
Photo Format	JPG
Memory card	TF card, Class 10 or above , Max support 128GB
Wi-Fi	Support
GPS	Built in
Power Interface	5V 2A
Battery	Built-in 250mAh Li-ion Battery
Parking Mode	Support

## 8. GPS player Software Installation and Instruction

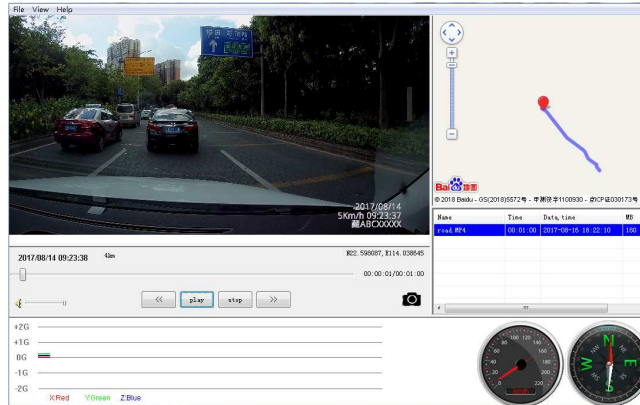
## (Only suitable for the units with GPS function)

If need check the GPS information, the professional player must be installed firstly

1. Please install the customized video player
2. Please copy the customized video player to computer and install.

### Using the player software:

1. Please open the customized video player and install it for the first time use.
2. Click "**File –Open**" to choose the file which need play, and open the play mode directly, as below:





## 9. Steps to Install APP on Smart Phone

### A. Android system mobile phone

1. Open the "Google play store", searching "DashCam Player" or scanning the following two-dimensional code to download and install.



### B. IOS system Apple phone

1. Open the "Apple store" search "DashCam Player" or scan the following two-dimensional code to download and install.



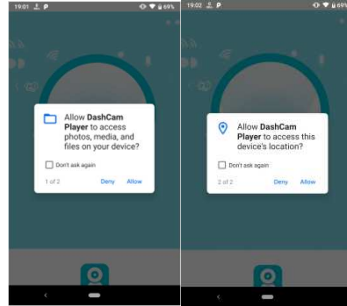
2. After the installation is completed, if you want "DashCam Player" access to cell

phone photos, please click "OK" (Note: you must select "OK", otherwise you can't preview the pictures download by APP )

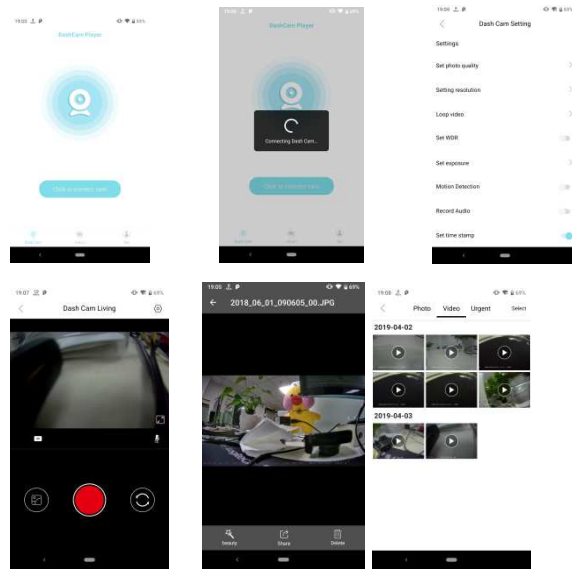
## 10. Wi-Fi Connection Instruction

### A. Android system mobile phone

1. Turn on the Wi-Fi of device (long press **SOS key**), its Wi-Fi name is blackview\_...., password is 88889999, then connecting your phone with device. By the way, pls allow the permissions as follows:

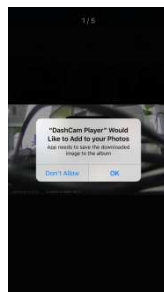


2. Open the APP" DashCam Player ", click "click to connect cam", then you can operate your device directly, as shown below

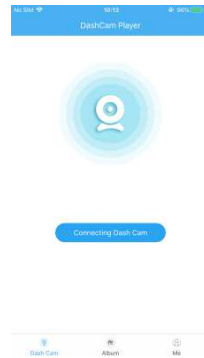


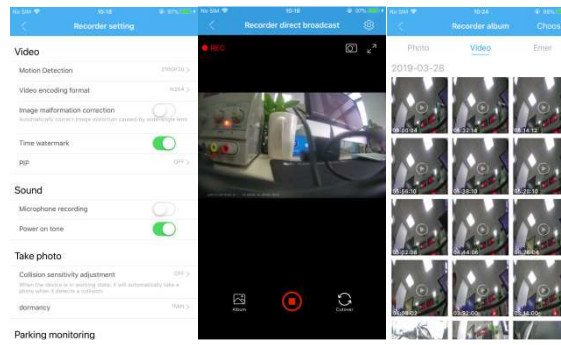
## B. Apple IOS system phone

1. Turn on the Wi-Fi of device (long press **SOS key**), its Wi-Fi name is blackview\_..., password is 88889999, then connecting your phone with device. By the way, please allow the permissions as follows:



2. Then, open "DashCam Player" APP to operate your device directly, as shown below:





## 10. FAQ

Under normal operating conditions, if there are problems with the device, please refer to the following methods to solve.

### **Cannot take picture and record**

Please check whether there is enough space for of TF card, or if it is locked.

### **Stopping automatically while recording**

Due to the huge amount of HD video data, please use high-speed C10 TF card with SDHC compatible, there will be the mark of C10 on the TF card.

### **There is "wrong file" shown on LCD when replay the photo/video**

Uncompleted files because of TF card storage error, please format your TF card.

### **Fuzzy image**

Please check whether the lens stays with dirt, fingerprints, if so , please clean it before shooting.

### **Horizontal stripes interference in the image,**

This is due to the wrong setting of light frequency error, please set the frequency 60HZ or 50HZ according to the local power supply.

### **Hang off**

Please reset to recover when device hangs off.

## Common Troubleshooting

Tips: This system max supports **128GB** TF card in storage, in order to ensure recording normally, please use good quality card, such as Kingston, SanDisk, Samsung and so on. Since the recording system has to read and write data fast, please use the Class 10 high-speed card. While the system is working, please do not insert or pull out the TF card, in case of damaging the card.

1. Dash cam do not power on after car engine start: Please check whether the power connection is good.
2. It can't record a normal video after the boot : Please check whether TF card inserted , or you need to format the TF card once; If TF card is damaged, please insert new card.
3. It crashes and other abnormal case: please press the RESET button to reset dash cam.
4. Video blur: Please check whether lens is clean, please wipe the lens and front windshield!
5. Press the power button can't boot: Please check the connection and power.
- 6.App picture is not smooth or can't be achieved: try to keep the number of background software less in your mobile phone, or keep the phone near the dash cam; or close APP and restart.

## **Disclaimer**

Dash Cam is the recorder device of video, audio and other related information for vehicle on the road, its files are only as auxiliary reference for accident.

Special version: The device must records files under normal recording status.

But in the following situation, it will lead to files to be damaged or lost;

1. If you pull out the TF card in the recording status, final video files will be damaged or lost.
2. If there is illegal blackout in the recording status, final video files will be damaged or lost.
3. If there is a destructive collision in the recording status, video and audio files will be damaged or lost.
4. If there is a destructive collision in the recording status so that Memory card is loose, video and audio files will be damaged or lost.

The audio and video of car camcorder is only for a reference, we don't take any responsibility due to data-loss under the abnormal circumstances.

This device complies with Part 15 of the FCC rules. Operation is subject to the following two conditions: 1) this device may not cause harmful interference, and 2) this device must accept any interference received, including interference that may cause undesired operation.

This equipment has been tested and found to comply with the limits for a Class B digital device, pursuant to Part 15 of the FCC rules. These limits are designed to provide reasonable protection against harmful interference in a residential installation. This equipment generates, uses and can radiate radio frequency energy and if not installed and used in accordance with the instructions, may cause harmful interference to radio communications. However, there is no guarantee that interference will not occur in a particular installation. If this equipment does cause harmful interference to radio or television reception, which can be determined by turning the equipment off and on, the user is encouraged to try correct the interference by one or more of the following measures:

- Reorient the receiving antenna.
- Increase the separation between the equipment and receiver.
- Connect the equipment into an outlet on a circuit different from that to which the receiver is connected.
- Consult the dealer or an experienced radio/TV technician for help.

You are cautioned that changes or modifications not expressly approved by the party responsible for compliance could void your authority to operate the equipment.

The distance between user and products should be no less than 20cm