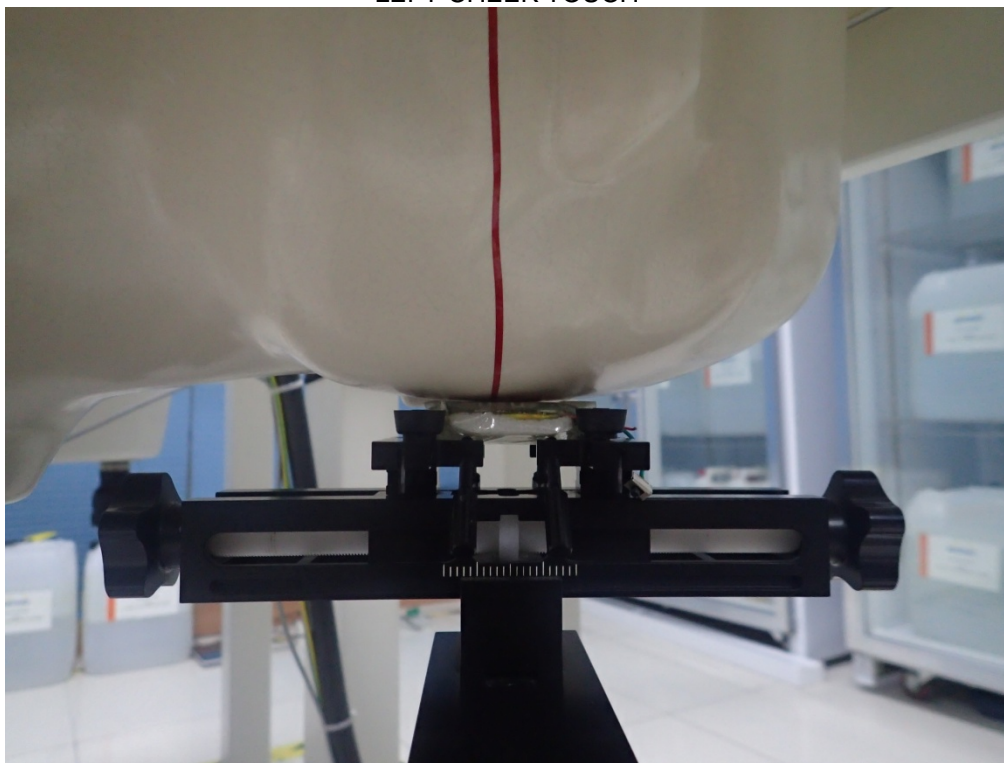


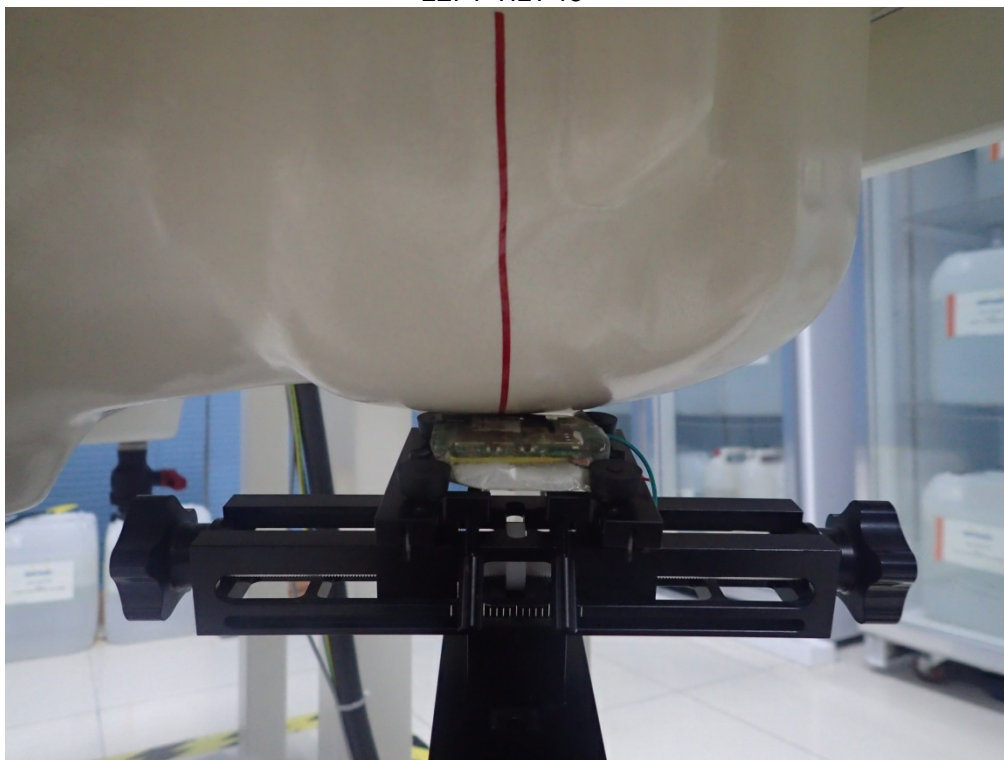
## TEST SETUP PHOTOGRAPHS & EUT PHOTOGRAPHS

### Test Setup Photographs

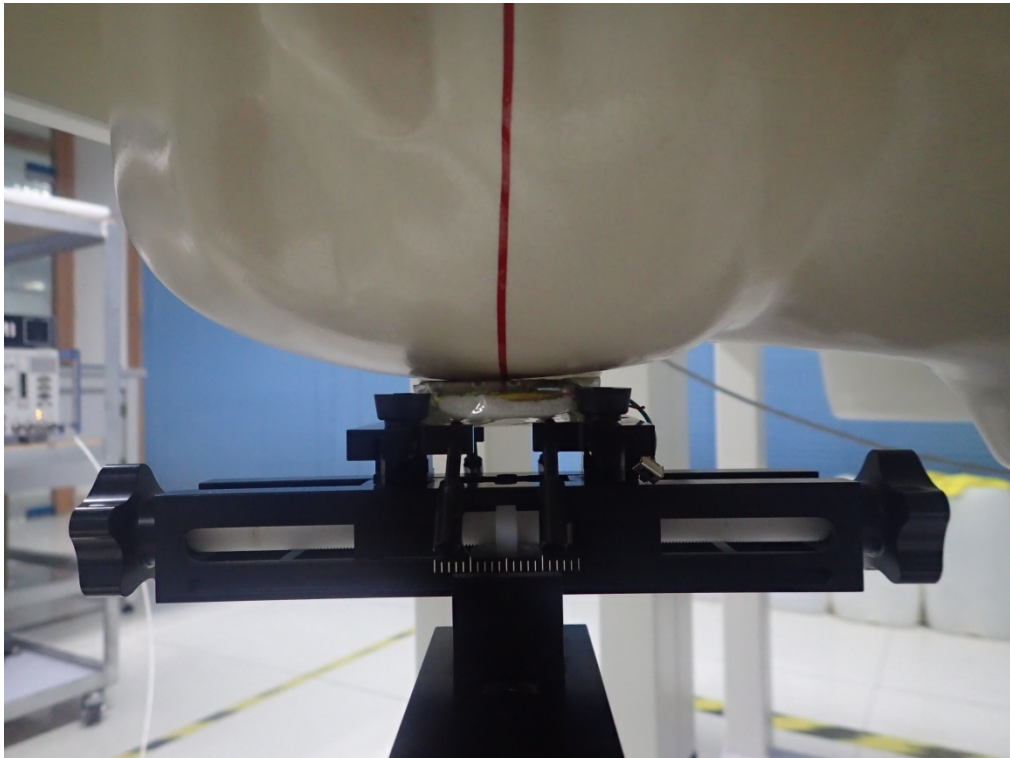
LEFT-CHEEK TOUCH



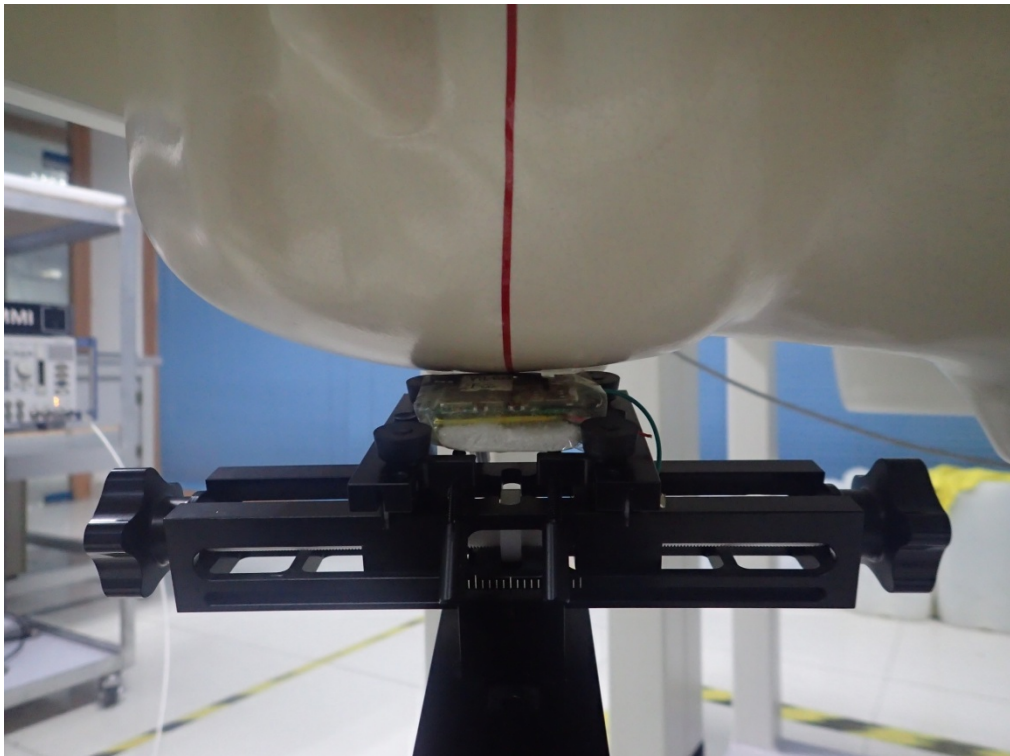
LEFT-TILT 15°



RIGHT-CHEEK TOUCH

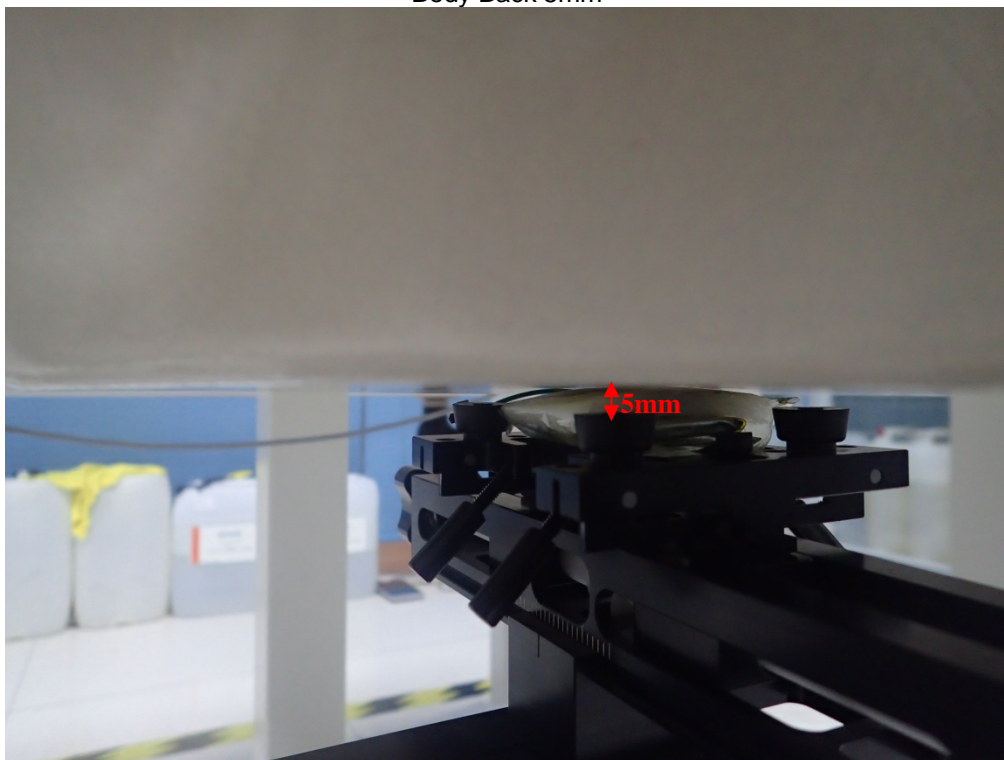


RIGHT-TILT 15°





Body Back 5mm

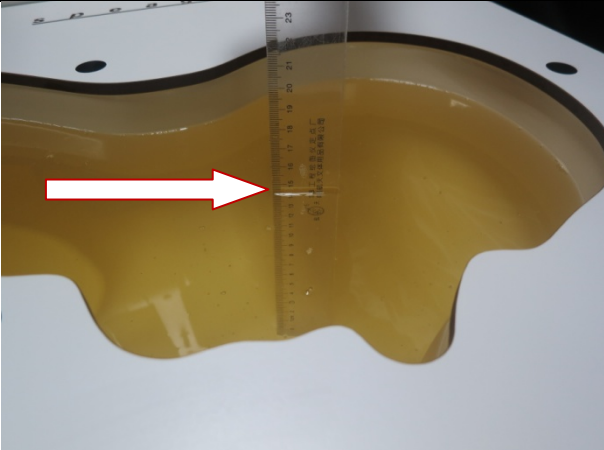
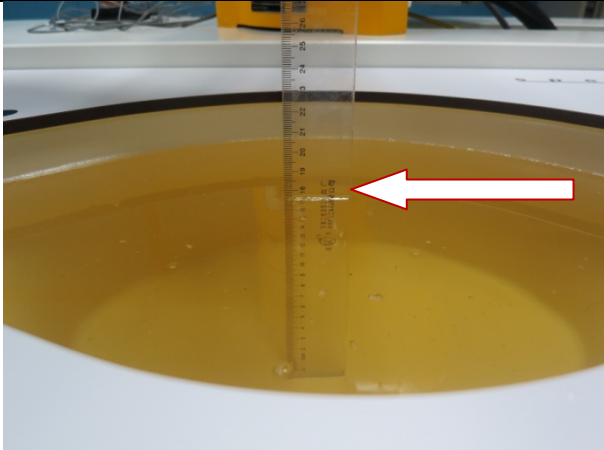
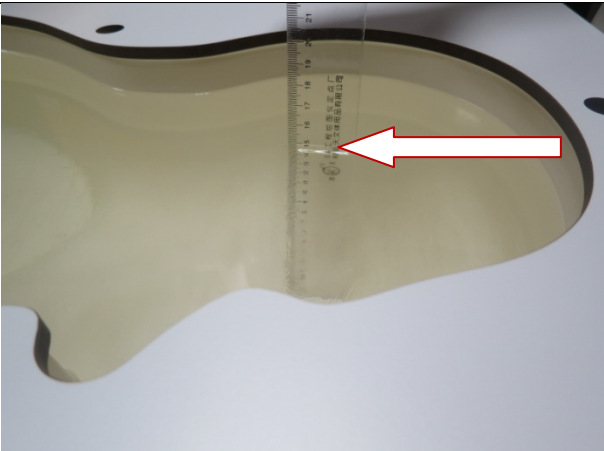



Body Front 5mm



**DEPTH OF THE LIQUID IN THE PHANTOM—ZOOM IN**

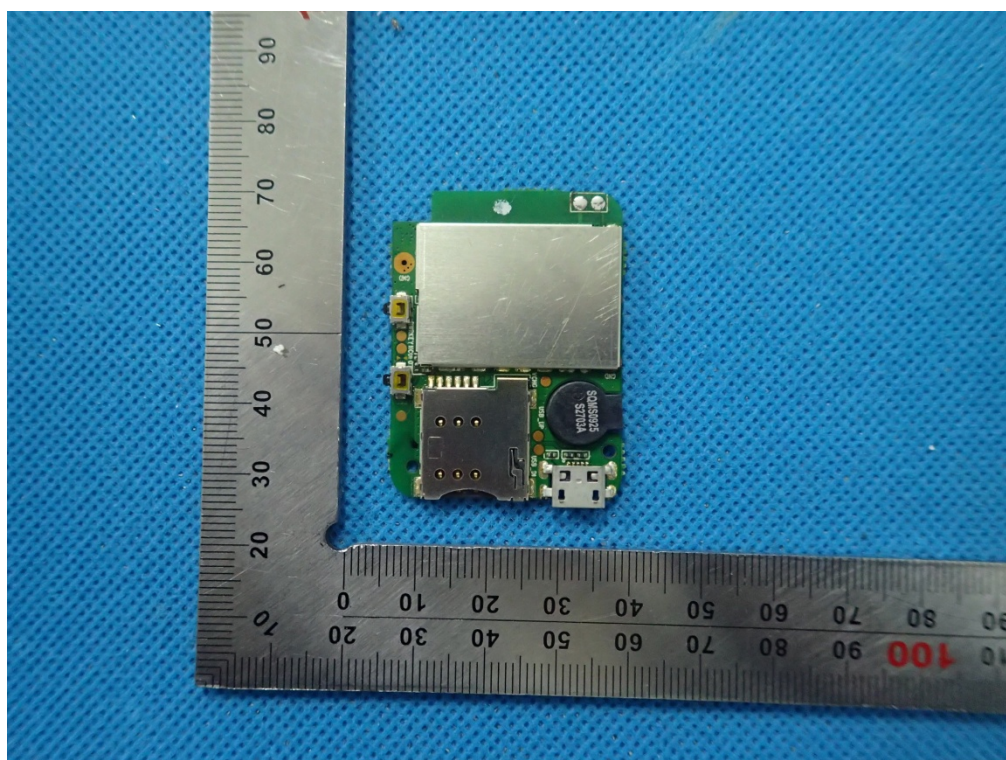
Note : The position used in the measurement were according to IEEE 1528-2013

<p>850MHz head</p>  A photograph showing a ruler placed vertically inside a head phantom. A red arrow points to the liquid level on the ruler, which is approximately at the 18 cm mark.	<p>850MHz body</p>  A photograph showing a ruler placed vertically inside a body phantom. A red arrow points to the liquid level on the ruler, which is approximately at the 18 cm mark.
<p>1900MHz head</p>  A photograph showing a ruler placed vertically inside a head phantom. A red arrow points to the liquid level on the ruler, which is approximately at the 18 cm mark.	<p>1900MHz body</p>  A photograph showing a ruler placed vertically inside a body phantom. A red arrow points to the liquid level on the ruler, which is approximately at the 18 cm mark.

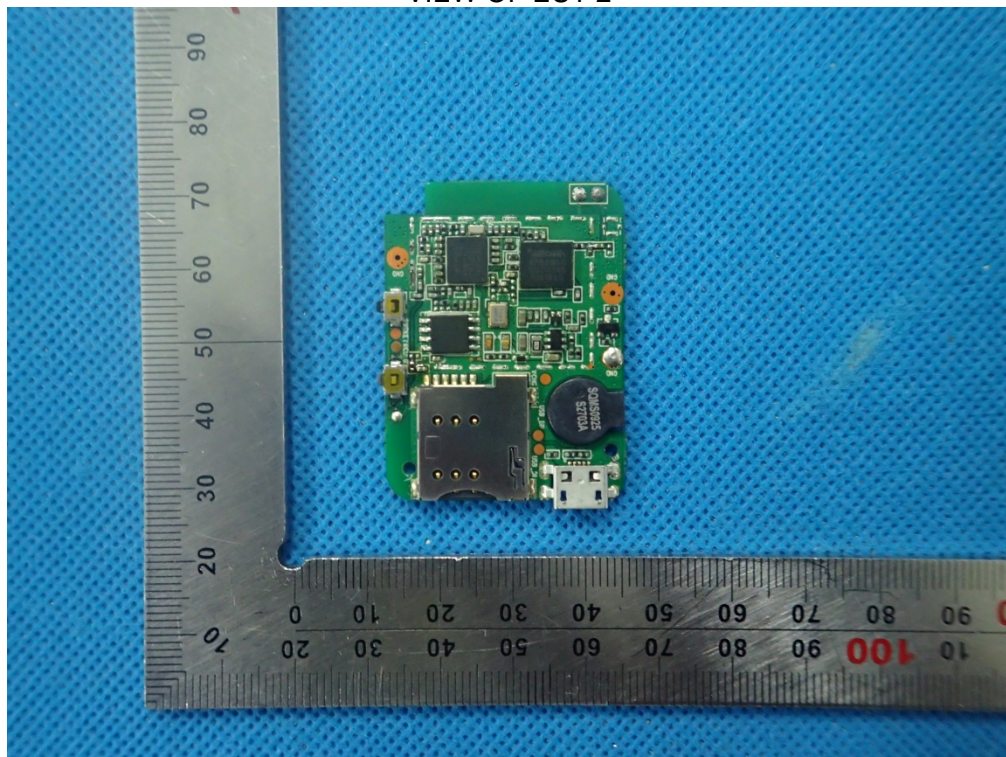


## EUT PHOTOGRAPHS

### VIEW OF EUT-1



### VIEW OF EUT-2



VIEW OF EUT-3

