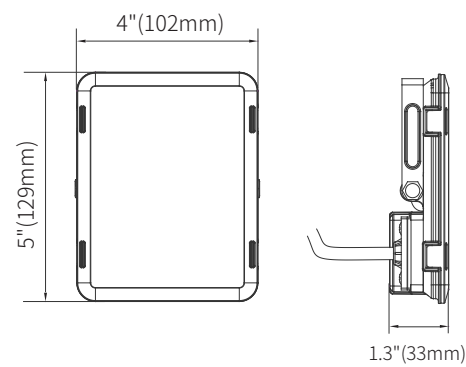


RGBW Smart LED Flood Light

User Guide

Thanks for purchasing our product, to ensure full understanding of the product and know how to use it properly, please read the user guide thoroughly and keep it for potential use.

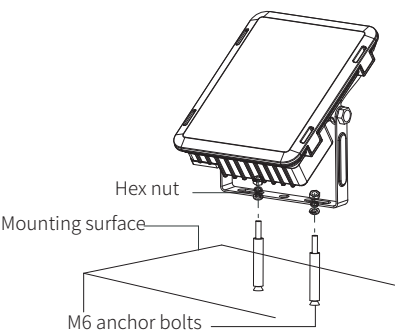
Dimensions



SANSI

1

Installation

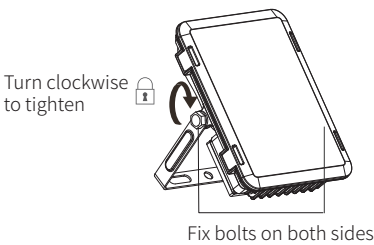


1. Take the product out of the package. Read the user manual carefully.
2. Prepare the anchor bolts on the mounting surface according to the mounting slots on the bracket.
3. Install the product onto the mounting surface and tighten the hex nuts afterwards.

2

Angle adjustment

1. Loosen the fixing bolts on both sides by turning counter-clockwise. Only loosen the bolts until the mounting bracket could be adjusted.
2. Adjust the light panel to the desired angle, then re-tighten the fixing bolts by turning them clockwise.



Get the App

You can install the Stellar BLE App via below methods:

Android:

1. Open Google Play.
2. Search for "Stellar BLE."
3. Download and install the App.

3

iOS:

1. Open App Store.
2. Search for "Stellar BLE".
3. Tap "Get" to install the App.

Add device

- 1.Prepare the smart flood light and connect the power cable.
- 2.Install the Stellar BLE, open the App.
- 3.Make sure your phone's bluetooth is on and keep your phone close to the light.
- 4.Tap "+" at the top right of the "Light" interface and select "Add Devices" to start searching for the device.
- 5.When the device is displayed in the list, select the device you want to add and tap "NEXT" to continue.
- 6.Wait for the device to be connected and added successfully, tap "OK" to finish .

Factory reset

- 2 methods to reset the device
- 1.You can select "Disconnect" on the Light Information interface, then select Remove, reset successfully after the light blinks.
 - 2.You can also complete the reset by quickly switching On and Off for 6 times.

4

Product Parameters

Model : C21FG002-B0100A40
Enclosure Color : Black
Material : PC + Aluminum
Input : AC 120V,60Hz
Rated Power : 100W
Color Temperature : RGB+5000K
Controlled by : Mobile App
Connection : Bluetooth
Beam Angle : 110°
Lifespan : 25,000 hrs
Dimensions : 4*5*1.3"(102*129*33mm)
Net Weight : 460g
Working Temperature : 14-104°F
Working Humidity : 10%-90% RH
IP Rating: IP66

Warnings

1. Ensure the voltage of the power supply complies with the operating voltage of the product before use.
2. The light source of this product is not replaceable; when the light source reaches its lifecycle, the whole luminaire shall be replaced. Do not attempt to disassemble the product.

5

3. Do not look into the operating light.
4. Do not assemble the product under live conditions.
5. The assembly and maintenance can only be performed by a qualified specialist.
6. If the power cord of the outer material is damaged, it must be recorded and repaired by the manufacturer or its authorized service center; or replaced by similar qualified specialist.

This equipment complies with FCC radiation exposure limits set forth for an uncontrolled environment.
This equipment should be installed and operated with minimum distance 20cm between the radiator & your body.

Please take attention that changes or modification not expressly approved by the party responsible for compliance could void the user's authority to operate the equipment. This device complies with Part 15 of the FCC Rules. Operation is subject to the following two conditions:
(1) This device may not cause harmful interference, and
(2) This device must accept any interference received, including interference that may cause undesired operation.
FCCID: 2A4AE-C21FG002



6

Warranty & Contact

1-year warranty
Email: service@sansiled.com
Web: www.sansiled.com
Mfg. date is printed on the certificate of approval

7