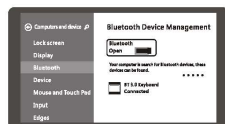
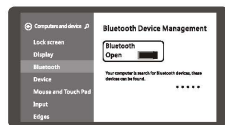
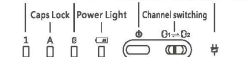


Win8 Connection Instructions:

Number keys Bluetooth Light Power Switch Charging indicator



When contact 2 devices on the same time, toggle $\text{F1} \rightleftharpoons \text{F2}$ switch key, that could switch to paired device freely.

1. please open the power switch on the right top of keyboard, press it 1s to open the power switch (press 4s to close the power switch).

2. press $\text{Fn} + \text{Caps Lock}$ matching code key, the blue light will twinkle ,then the device into searching and matching.

3. On the start page open the "setting" —— "charge the computer setting" —— open the "Bluetooth" .

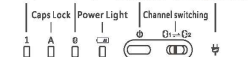
4. Open the "Bluetooth" into searching, then you will find "BT 3.0 Keyboard" click to next step.

5. According the table PC tips to input the correct password then click "Enter" button.

6. There have a tip for connecting successfully ,you can use your keyboard comfortably .

iOS Connection Instructions:

Number keys Bluetooth Light Power Switch Charging indicator



When contact 2 devices on the same time, toggle $\text{F1} \rightleftharpoons \text{F2}$ switch key, that could switch to paired device freely.

1. please open the power switch on the right top of keyboard, press it 1s to open the power switch (press 4s to close the power switch).

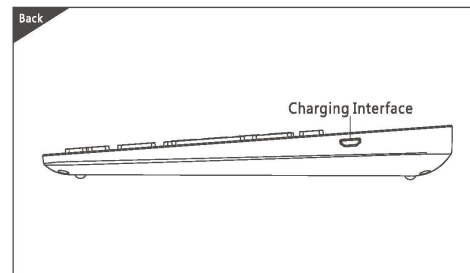
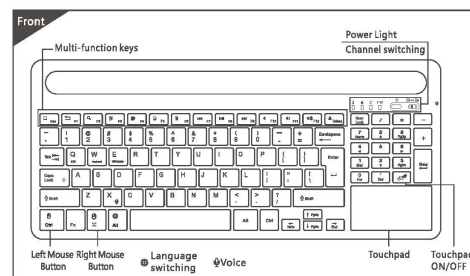
2. press $\text{Fn} + \text{Caps Lock}$ matching code key, the blue light will twinkle ,then the device into searching and matching.

3. Click the "Setting" on the iPad .then open the "Bluetooth" .

4. Open the "Bluetooth" into searching, then you will find "BT 3.0 Keyboard" click to next step.

5. According the table PC tips to input the correct password then click "Enter" button.

6. There have a tip for connecting successfully ,you can use your keyboard comfortably .



We hereby declare that (all essential radio test suites have been carried out and that) the above named product is in conformity to all the essential requirements of Directive 1999/5/EC. The product carries the CE Mark: CE0168

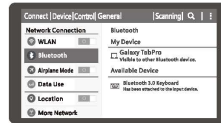
Normal working environment : - 25°C + 65°C

B021 Multi-channel Universal Desktop Slot Keyboard For Tablet PC User Manual

Notice : Please read use manual carefull before you start use this product.

Android Connection Instructions:

Number keys Bluetooth Light Power Switch Charging indicator



1. please open the power switch on the right top of keyboard ,press it 1s to open the power switch (press 4s to close the power switch).

2. press $\text{Fn} + \text{Caps Lock}$ matching code key, the blue light will twinkle ,then the device into searching and matching.

3. On the start page open the "setting" —— then open the Bluetooth.

4. Open the "Bluetooth" into searching, then you will find "BT 3.0 Keyboard" click to next step.

5. According the table PC tips to input the correct password then click "Enter" button.

6. There have a tip for connecting successfully ,you can use your keyboard comfortably .

When contact 2 devices on the same time, toggle $\text{F1} \rightleftharpoons \text{F2}$ switch key, that could switch to paired device freely.

Remarks : After connecting successfully the next time you don't need match code, just open the Bluetooth keyboard power switch and the tablet PC "Bluetooth" . The BT keyboard wills search the device and automatic connects.

Warranty Card

User information

Company or personage full name

Contact address

TEL Zip

The purchased product name and model NO.

Purchased date

This reason due to the product broken and damage is not include on the warranty.

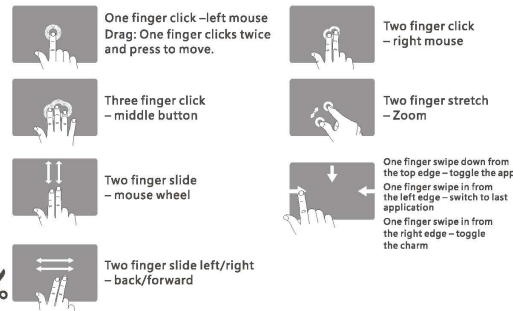
- (1) Accident, misuse, improper operation, or any unauthorized repair, modified or removed
- (2) Improper operation or maintenance, when operation violation of the instructions or connection unsuitability power supply.



Three System Function Key Combinations(fn+)

Fn+ iOS Apple iOS System		Fn+ Android Switch to Android System		Fn+ Win Switch to Win System	
F1	Return to desktop	F1	Return to desktop	F1	Return to desktop
F2	Return to the previous page	F2	Return to the previous page	F2	Return to the previous page
F3	Search	F3	Search	F3	Search
F4	Select	F4	Select	F4	Select
F5	Cut	F5	Cut	F5	Cut
F6	Paste	F6	Paste	F6	Paste
F7	Copy	F7	Copy	F7	Copy
F8	Progress	F8	Progress	F8	Progress
F9	Play/Pause	F9	Play/Pause	F9	Play/Pause
F10	Next	F10	Next	F10	Next
F11	Mute	F11	Mute	F11	Mute
F12	Volume+	F12	Volume+	F12	Volume+
F13	Volume-	F13	Volume-	F13	Volume-
F14	Lock	F14	Lock	F14	Lock

Touchpad Functions



This device complies with Part 15 of the FCC Rules. Operation is subject to the following two conditions:

- (1) this device may not cause harmful interference, and**
- (2) this device must accept any interference received, including interference that may cause undesired operation.**

This device and its antenna(s) must not be co-located or operating in conjunction with any other antenna transmitter.

Changes or modifications not expressly approved by the party responsible for compliance could void the user's authority to operate the equipment.

Note:

This equipment has been tested and found to comply with the limits for a Class B digital device, pursuant to part 15 of the FCC Rules. These limits are designed to provide reasonable protection against harmful interference in a residential installation. This equipment generates, uses and can radiate radio frequency energy and, if not installed and used in accordance with the instructions, may cause harmful interference to radio communications. However, there is no guarantee that interference will not occur in a particular installation. If this equipment does cause harmful interference to radio or television reception, which can be determined by turning the equipment off and on, the user is encouraged to try to correct the interference by one or more of the following measures:

- Reorient or relocate the receiving antenna.**
- Increase the separation between the equipment and receiver.**
- Connect the equipment into an outlet on a circuit different from that to which the receiver is connected.**
- Consult the dealer or an experienced radio/TV technician for help.**