

EA500 Series Quick Reference Guide



Appearance and Buttons

Front view



- To turn on device: Hold power button until the device switches on.
- To turn off device: Hold power button during operation until the device shows a menu, select "Power off".
- To turn off display: Press the power button .Device also turn off the display automatically if left idle for some time. That amount of time can be configure at "Setting→Display→Sleep"
- To turn on the display: Press the power button lightly .

Side view



Rear view



Installing SIM/ SD Card

Take the thimble to remove the card holder, place the SIM card 1, card 2 and SD card correctly on the card slot (as shown below):



SIM Card 2



SIM Card 1



SD Slot

Direct charging instructions

Plug the Type C USB data cable into one end of the power adapter and directly connect one end of the Type C USB data cable to the charging socket of the device for charging. The charging indicator on the device in charging state is red, and the red light is off after the charger is fully charged.



Power Adapter



Type-C USB Cable

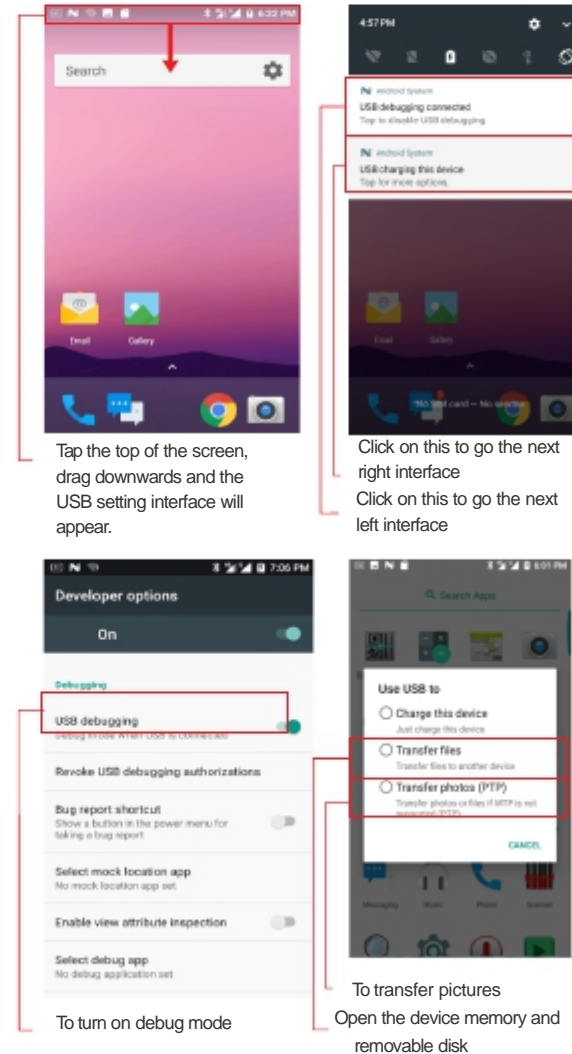
Battery Operation

The device battery is Li-ion type battery and not removable, which should only be charged by using original power supply. Do not store battery in hot, humid, or corrosive environment. Do not break or crack battery. Do not store battery when it is fully charged completely drained. Please shut down the device to save. Note: The battery should be charged for at least 8 hours before the first use.



Connecting to PC

After you install the Android driver or an Android smart phone assistant, you can connect the devices to your PC with USB cable provided. (You can download the software mentioned above from <http://www.ute.com>. After device connected to your PC, the screen would display like this:



Open the system storage and removable disk at the same time in Windows PC → my computer can view the storage device, and can transfer and store data

Note: If you want to insert a memory card on your device to use it as a removable disk, if you do not insert a memory card, you will not see a removable disk on my computer

CAUTION!

- To ensure the unit working properly, please keep all connectors away from the contaminants staying inside of them such as dust, grease, mud, and water. The negligence may cause the unit with no communication, short circuited, overheated and so on.
- If the connector is damaged, please ensure the connector is being fully repaired before using the unit to avoid causing short circuited.

<http://www.ute.com/>

Copyright 2018 unitech Electronics Co., Ltd. All rights reserved.
unitech is a registered trademark of unitech Electronics Co., Ltd.

Thank you for purchasing the unitech product.
For other product documentation, please scan the QR code for more information.



WARNING

Declaration

This device (FCC ID: HLEEA500BTNFL) complies with part 15 of the FCC rules. Operation is subject to the following two conditions: (1) the device may not cause harmful interference, and (2) this device must accept any interference received, including interference that may cause undesired operation.

This equipment has been tested and found to comply with the limits for a Class B digital device, pursuant to Part 15 of the FCC Rules. These limits are designed to provide reasonable protection against harmful interference in a residential installation. This equipment generates, uses and can radiate radio frequency and, if not installed and used in accordance with the instructions, may cause harmful interference to radio communications. However, there is no guarantee that interference will not occur in a particular installation. If this equipment does cause harmful interference to radio or television reception, which can be determined by turning the equipment off and on, the user is encouraged to try to correct the interference by one or more of the following measures:

- Reorient or relocate the receiving antenna.
- Increase the separation between the equipment and receiver.
- Connect the equipment into an outlet on a circuit different from that to which the receiver is connected.
- Consult the dealer or an experienced radio/TV technician for help.

Declaration:

This device complies with Part 15 of the FCC Rules. Operation is subject to the following two conditions:

- (1) This device may not cause harmful interference.
- (2) This device must accept any interference received, including interference that may cause undesired operation.

Warning:

Changes or modifications made to this equipment not expressly approved by unitech may void the FCC authorization to operate this equipment.

Operations in the 5.15-5.25GHz band are restricted to indoor usage only.

The device complies with the RF Exposure requirements when the devices. If use near the body is maintained at a minimum separation distance of 1.0 cm using a device holster/case which is not composed of metal components or is operated at more than 1.0cm from the body.

The Specific Absorption Rate (SAR) is the unit of measurement for the amount of radio frequency energy absorbed by the body when using a device. The SAR value is determined at the highest certified power level in laboratory conditions, but the actual SAR level of the device when being operated can be well below the value. This is because the device is designed to use the minimum power required to reach the network. The SAR limit adopted by USA and Canada is 1.6 watts/kilogram (W/kg) averaged over one gram of tissue. The Highest SAR value reported under this standard product certification for use the ear is 1.193W/kg and when properly worn on the body is 0.849 W/kg.