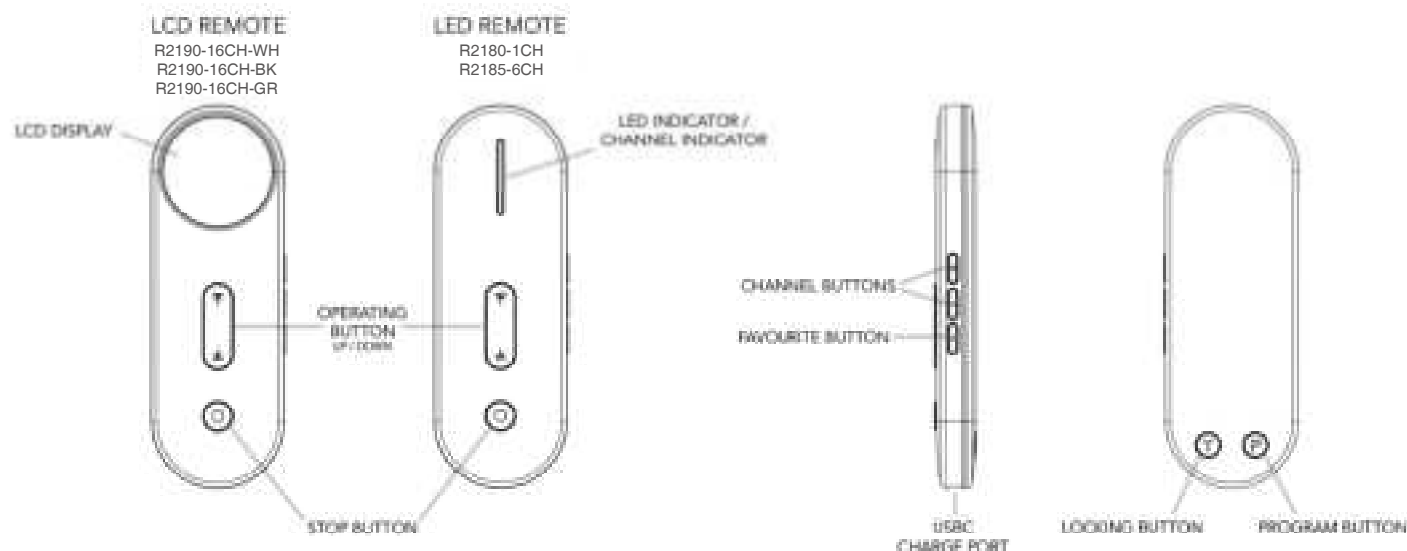


Remote Layout

NOTE: The LCD remote screen displays the battery level of the blind on the LEFT side and the battery level of the remote on the RIGHT side.



Pairing Remote

NOTE: Pairing can not be done under group channel or 0 channel

Option 1 : Power on the motor and then add the remote



Option 2 : Add controller B via pre-existing controller A



Direction Reverse

Checking current direction



Option 1 : Changing direction if the limits are not set



Option 2 : Changing direction if the limits are set



Upper and Lower Limit Setting

NOTE : Before limits are set, the motor will run in jog mode. For continuous operation hold down the UP or DOWN button for 2 seconds. Once limits are set, motor will run continuously between limits. Upper and Lower Limits cannot be set at the same point.

Setting Upper Limit



Setting Lower Limit



Jog Mode / Continuous Mode

NOTE : Before limits are set the motor is in jog mode. When in jog mode hold UP or DOWN for continuous operation. Motor cannot be set to continuous mode before limits are set.

Same operation is used to move between both modes



Setting and Cancelling Favourite Position

NOTE : One Favourite Position can be set at a time.

Setting Favourite position



Cancelling Favourite Position



Hot Key for Favourite Position



Adjusting Upper and Lower Limits

NOTE: Process has a 4 minute time limit.

Adjusting Upper Limit



1. Press and hold UP & FAW Button for 4s



2. Jog x 1



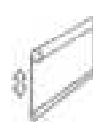
3. Move Blind UP or DOWN



4. Position at new Upper Limit



5. Press and hold UP & FAW Button for 2s



6. Jog x 2

Adjusting Lower Limit



1. Press and hold DOWN & FAW Button for 4s



2. Jog x 1



3. Move Blind UP or DOWN



4. Position at new Lower Limit



5. Press and hold DOWN & FAW Button for 2s



6. Jog x 2

Remove All Limits

NOTE: The motor limits should be set immediately after installing the blind to protect the blind from damage or misuse.

Removing all set limits



1. Press PROG Button



2. Jog x 1



3. Press STOP



4. Jog x 1



5. Press PROG Button



6. Jog x 1

Remove Controllers

NOTE: Removing controllers does not remove set limits. To use a remote to remove a second remote, both must be paired to motor.

Remove a Single Controller



1. Press and Hold MHB for 2s



2. Jog x 1



3. Press PROG Button



4. Jog x 1

Remove Controller B via Controller A



1. Press PROG Button on Controller A



2. Jog x 1



3. Press PROG Button on Controller A



4. Jog x 1



5. Press STOP on Controller B



6. Jog x 1

Remove All Controllers



1. Press PROG Button



2. Jog x 1



3. Press PROG Button



4. Jog x 1



5. Press DOWN Button



6. Jog x 1

Adjust Motor Speed

NOTE: The motors have 3 speeds. The speeds of this motor are 30 / 25 / 30 RPM. If the motor does not jog at the final stage, the maximum speed has been reached. If the motor is faster it will return to its default speed.

Increase Motor Speed



Decrease Motor Speed



Soft Start/Stop

NOTE: Soft Start/Stop is on as factory default.

Turn Soft Stop/Start On



Turn Soft Stop/Start Off



Charging Light On/Off

NOTE: When motor is plugged in for charging a blue LED light will flash 5 times. During charging the blue LED light flashes 3 times every 8 seconds. When the motor is fully charged the blue LED light will stay on. This function turns the flashing charging light on or off.

Turn Charging Light On or Off



Function Lock

NOTE: When Function Lock is on all setting options are locked for that individual remote. Function lock must be turned off to make any changes to the settings. The LCD remote screen flashes 5 times to show it has changed in or out of locking mode. When operating the LCD remote in locked mode the screen flashes. The LED indicator of the LED remote will flash blue 5 times when moving in or out of locking mode.

Turn Function Lock on/Off



1. Press and hold T Button for 12s

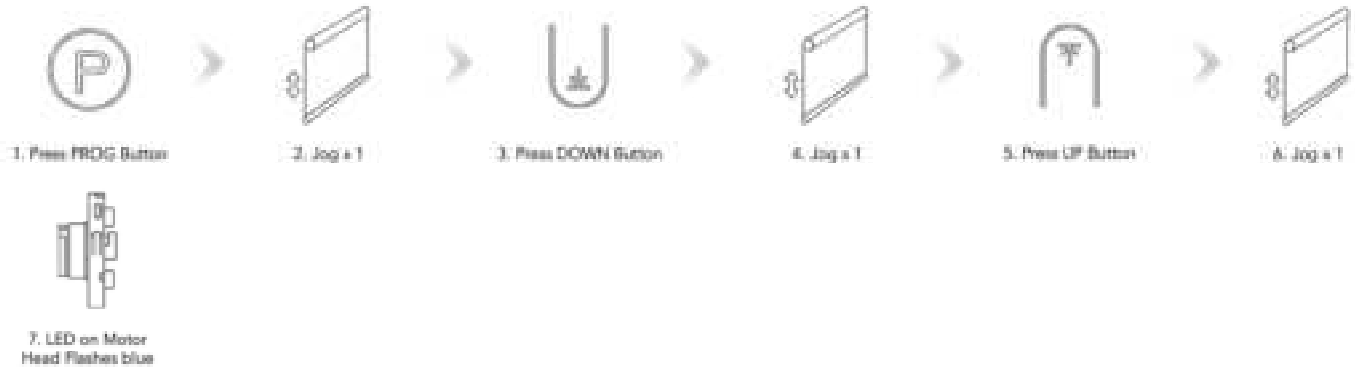
Bluetooth Connection

NOTE : Make sure bluetooth on the mobile phone is turned on. User must have LL OneTouch app installed. These steps will put the motor in the correct mode to connect to the app. See separate detailed App instructions for full connection and installation process.

Option 1 : Entering Bluetooth Mode with Motor Head



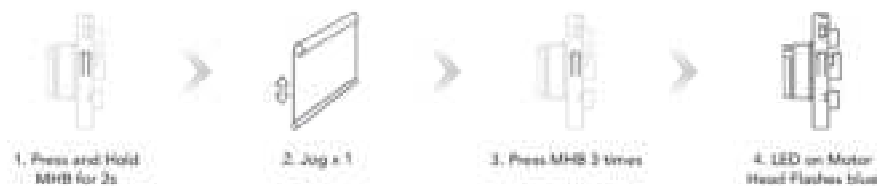
Option 2 : Entering Bluetooth Mode with Remote



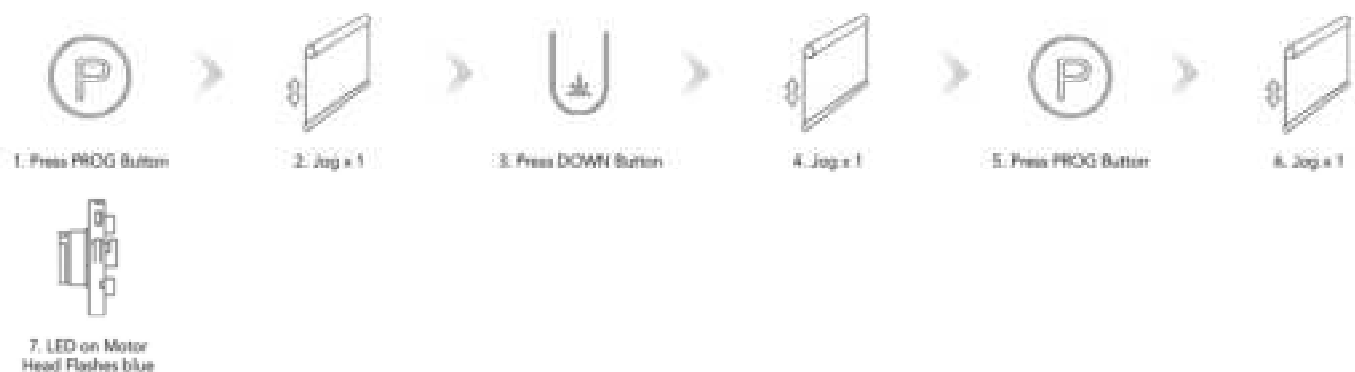
Smart Hub

NOTE : Enables the user to operate the motor when out of range using the HUB. User must have LLOneTouch app installed. These steps will put the motor in the correct mode to connect to the app. See separate detailed App instructions for full connection and installation process.

Option 1 : Entering Mode with Motor Head



Option 2 : Entering Mode with Remote



FCC Compliance Statement

This device complies with part 15 of the FCC Rules. Operation is subject to the following two conditions: (1) This device may not cause harmful interference, and (2) this device must accept any interference received, including interference that may cause undesired operation. This equipment has been tested and found to comply with the limits for a Class B digital device, pursuant to Part 15 of the FCC Rules. These limits are designed to provide reasonable protection against harmful interference in a residential installation. This equipment generates, uses and can radiate radio frequency energy and, if not installed and used in accordance with the instructions, may cause harmful interference to radio communications. However, there is no guarantee that interference will not occur in a particular installation. If this equipment does cause harmful interference to radio or television reception, which can be determined by turning the equipment off and on, the user is encouraged to try to correct the interference by one or more of the following measures:

Reorient or relocate the receiving antenna.

Increase the separation between the equipment and receiver.

Connect the equipment into an outlet on a circuit different from that to which the receiver is connected.

Consult the dealer or an experienced radio/TV technician for help.

FCC Caution:

Any Changes or modifications not expressly approved by the party responsible for compliance could void the user's authority to operate the equipment.

Innovation, Science and Economic Development (ISED) Canada Compliance Statement

This device contains licence-exempt transmitter(s)/receiver(s) that comply with Innovation, Science and Economic Development Canada's licence-exempt RSS(s). Operation is subject to the following two conditions:

1.This device may not cause interference.

2.This device must accept any interference, including interference that may cause undesired operation of the device.

L'émetteur/récepteur exempt de licence contenu dans le présent appareil est conforme aux CNR d'Innovation, Sciences et Développement économique Canada applicables aux appareils radio exempts de licence. L'exploitation est autorisée aux deux conditions suivantes :

1.L'appareil ne doit pas produire de brouillage;

2.L'appareil doit accepter tout brouillage radioélectrique subi, même si le brouillage est susceptible d'en compromettre le fonctionnement.