

System Performance Check Report for D2450V2 - SN899

Exposure Conditions

Frequency [MHz]   Channel Number	2450.000   0	TSL Permittivity	39.6
Group   UID	CW   0--	TSL Conductivity [S/m]	1.79
Conversion Factor	7.64	Phantom Section   TSL	Flat   HSL

Hardware Setup

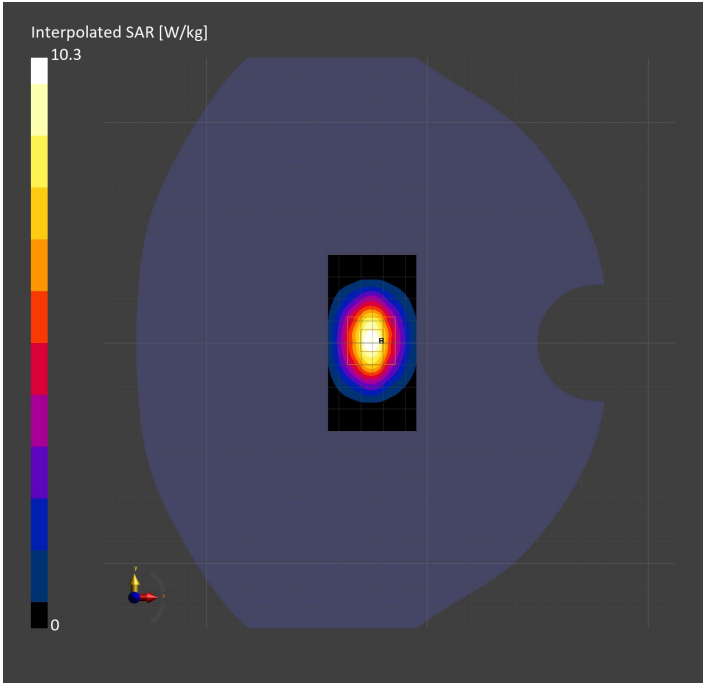
Probe   Calibration Date	EX3DV4 - SN7587   2023-04-18	Phantom	Twin-SAM V8.0 (30deg probe tilt)
DAE   Calibration Date	DAE4 Sn1239   2023-03-16	TSL Type	HBBL-600-10000
Software Version	16.2.4.2524		

Scans Setup

	Area Scan	Zoom Scan
Grid Extents [mm]	40.0 x 80.0	30.0 x 30.0 x 30.0
Grid Steps [mm]	10.0 x 10.0	5.0 x 5.0 x 1.5
Sensor Surface [mm]	3.0	1.4
Graded Grid	N/A	Yes
M2/M1 [%]		82.1
Dist 3dB Peak [mm]		9.0

Measurement Results

	Area Scan	Zoom Scan
psSAR1g [W/Kg]	5.37	5.38
psSAR10g [W/Kg]	2.50	2.61
Power Drift [dB]	N/A	-0.01



System Performance Check Report for D5GHzV2 - SN1138

Exposure Conditions

Frequency [MHz]   Channel Number	5250.000   0	TSL Permittivity	35.7
Group   UID	CW   0--	TSL Conductivity [S/m]	4.70
Conversion Factor	5.56	Phantom Section   TSL	Flat   HSL

Hardware Setup

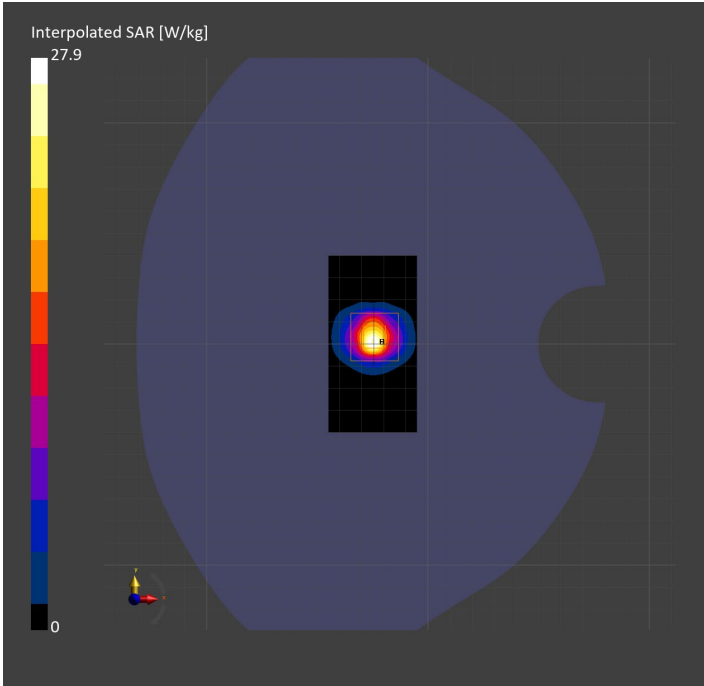
Probe   Calibration Date	EX3DV4 - SN7810   2023-04-25	Phantom	Twin-SAM V8.0 (30deg probe tilt)
DAE   Calibration Date	DAE4 Sn1439   2023-03-16	TSL Type	HBBL-600-10000
Software Version	16.2.4.2524		

Scans Setup

	Area Scan	Zoom Scan
Grid Extents [mm]	40.0 x 80.0	22.0 x 22.0 x 22.0
Grid Steps [mm]	10.0 x 10.0	4.0 x 4.0 x 1.4
Sensor Surface [mm]	3.0	1.4
Graded Grid	N/A	Yes
M2/M1 [%]		63.3
Dist 3dB Peak [mm]		7.4

Measurement Results

	Area Scan	Zoom Scan
psSAR1g [W/Kg]	6.25	7.32
psSAR10g [W/Kg]	1.86	2.12
Power Drift [dB]	N/A	0.00



System Performance Check Report for D1900V2 - SN5d163

Exposure Conditions

Frequency [MHz]   Channel Number	1900.000   0	TSL Permittivity	39.6
Group   UID	CW   0--	TSL Conductivity [S/m]	1.44
Conversion Factor	7.53	Phantom Section   TSL	Flat   HSL

Hardware Setup

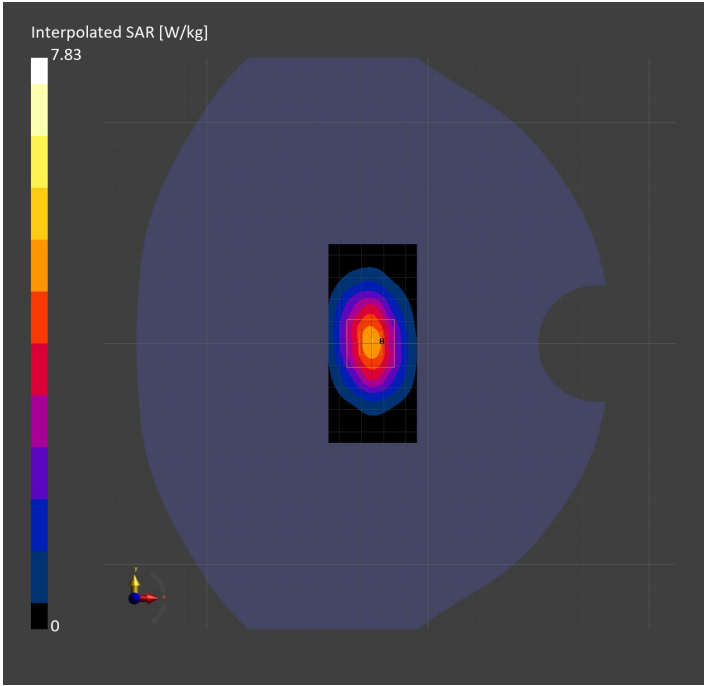
Probe   Calibration Date	EX3DV4 - SN7807   2023-04-11	Phantom	Twin-SAM V8.0 (30deg probe tilt)
DAE   Calibration Date	DAE4 Sn1799   2023-04-04	TSL Type	HBBL-600-10000
Software Version	16.2.4.2524		

Scans Setup

	Area Scan	Zoom Scan
Grid Extents [mm]	40.0 x 90.0	30.0 x 30.0 x 30.0
Grid Steps [mm]	10.0 x 15.0	6.0 x 6.0 x 1.5
Sensor Surface [mm]	3.0	1.4
Graded Grid	N/A	Yes
M2/M1 [%]		81.5
Dist 3dB Peak [mm]		9.7

Measurement Results

	Area Scan	Zoom Scan
psSAR1g [W/Kg]	4.12	4.15
psSAR10g [W/Kg]	2.15	2.17
Power Drift [dB]	N/A	0.02



# System Performance Check Report for D1750V2 - SN1050

## Exposure Conditions

Frequency [MHz]   Channel Number	1750.000   0	TSL Permittivity	39.9
Group   UID	CW   0--	TSL Conductivity [S/m]	1.36
Conversion Factor	8.02	Phantom Section   TSL	Flat   HSL

## Hardware Setup

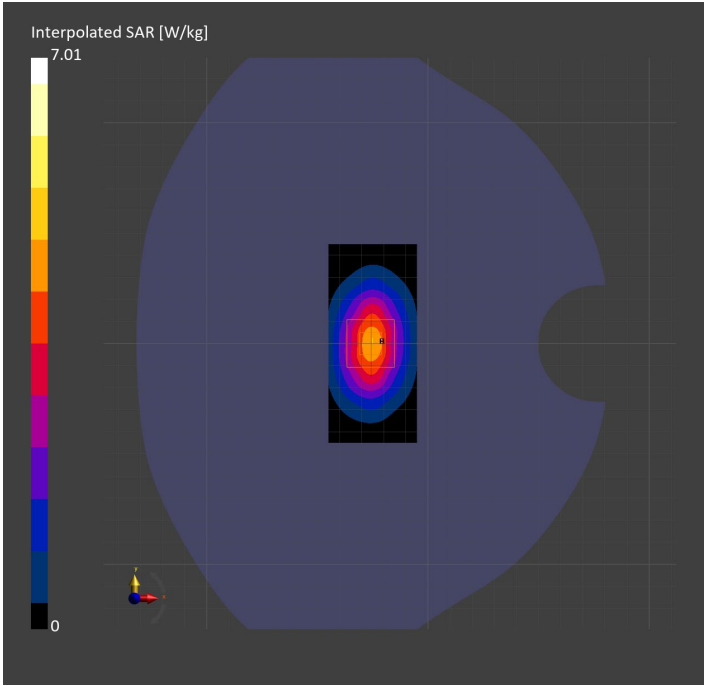
Probe   Calibration Date	EX3DV4 - SN7807   2023-04-11	Phantom	Twin-SAM V8.0 (30deg probe tilt)
DAE   Calibration Date	DAE4 Sn1799   2023-04-04	TSL Type	HBBL-600-10000
Software Version	16.2.4.2524		

## Scans Setup

	Area Scan	Zoom Scan
Grid Extents [mm]	40.0 x 90.0	30.0 x 30.0 x 30.0
Grid Steps [mm]	10.0 x 15.0	6.0 x 6.0 x 1.5
Sensor Surface [mm]	3.0	1.4
Graded Grid	N/A	Yes
M2/M1 [%]		81.5
Dist 3dB Peak [mm]		10.8

## Measurement Results

	Area Scan	Zoom Scan
psSAR1g [W/Kg]	3.75	3.75
psSAR10g [W/Kg]	2.01	2.01
Power Drift [dB]	N/A	-0.01



System Performance Check Report for D2300V2 - SN1058

Exposure Conditions

Frequency [MHz]   Channel Number	2300.000   0	TSL Permittivity	39.4
Group   UID	CW   0--	TSL Conductivity [S/m]	1.62
Conversion Factor	7.71	Phantom Section   TSL	Flat   HSL

Hardware Setup

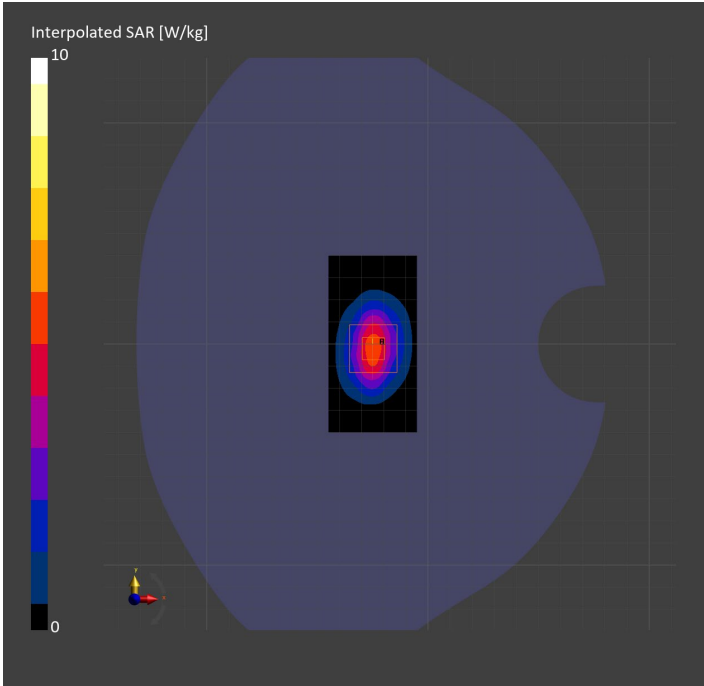
Probe   Calibration Date	EX3DV4 - SN7482   2023-04-18	Phantom	Twin-SAM V8.0 (30deg probe tilt)
DAE   Calibration Date	DAE4 Sn1380   2023-02-14	TSL Type	HBBL-600-10000
Software Version	16.2.4.2524		

Scans Setup

	Area Scan	Zoom Scan
Grid Extents [mm]	40.0 x 80.0	30.0 x 30.0 x 30.0
Grid Steps [mm]	10.0 x 10.0	5.0 x 5.0 x 1.5
Sensor Surface [mm]	3.0	1.4
Graded Grid	N/A	Yes
M2/M1 [%]		79.7
Dist 3dB Peak [mm]		8.0

Measurement Results

	Area Scan	Zoom Scan
psSAR1g [W/Kg]	4.37	4.97
psSAR10g [W/Kg]	2.03	2.44
Power Drift [dB]	N/A	-0.08



Measurement Report for Device, FRONT, Validation band, UID 0 -, Channel 0 (30000.0MHz)

Device under Test Properties

Model, Manufacturer	Dimensions [mm]	IMEI	DUT Type
, Device	100.0 x 100.0 x 100.0		Phone

Exposure Conditions

Phantom Section	Position, Test Distance [mm]	Band	Group, UID	Frequency [MHz], Channel Number	Conversion Factor
5G Air	FRONT, 5.55	Validation band	CW, 0--	30000.0, 0	1.0

Hardware Setup

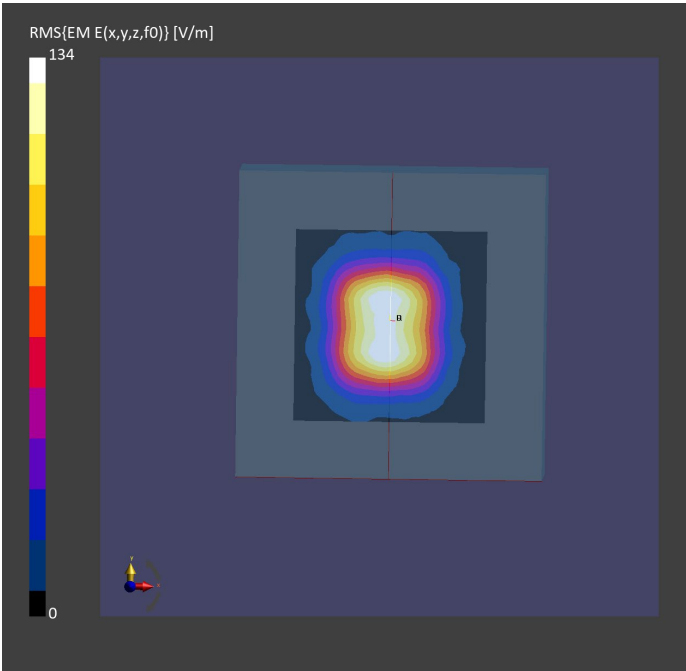
Phantom	Medium	Probe, Calibration Date	DAE, Calibration Date
mmWave- xxxx	---Air	EUmmWV4 - SN9589_F1-55GHz, 2022-09-20	DAE4 Sn1377, 2022-09-15

Scan Setup

	5G Scan
Grid Extents [mm]	60.0 x 60.0
Grid Steps [lambda]	0.25 x 0.25
Sensor Surface [mm]	5.55
MAIA	N/A

Measurement Results

	5G Scan
Date	2023-03-16, 19:11
Avg. Area [cm²]	4.00
psPDn+ [W/m²]	34.7
psPDtot+ [W/m²]	36.1
psPDmod+ [W/m²]	36.2
E <sub>max</sub> [V/m]	134
Power Drift [dB]	-0.02



Measurement Report for Validation band: CW, FRONT

Exposure Conditions

Band	Validation band	Phantom Section	5G
Frequency [MHz]   Channel Number	30000.0   0	Conversion Factor	1.0
Group   UID	CW, 0--	Position   Test Distance [mm]	FRONT   5.55

Hardware Setup

Probe   Calibration Date	EUmmWV4 - SN9589_F1-55GHz   2022-09-20	Phantom	mmWave   xxxx
DAE   Calibration Date	DAE4 Sn1377   2022-09-15	Medium	Air   -
Software Version	3.2.2.2358		

Scan Setup

Scan Type	5G Scan	Grid Extents [mm]	60.0 x 60.0
Grid Steps [lambda]	0.25 x 0.25	Sensor Surface [mm]	5.55

Measurement Results

Avg. Area [cm²]	4.00
psPDn+ [W/m²]	35.2
psPDtot+ [W/m²]	36.6
psPDmod+ [W/m²]	39.3
E <sub>max</sub> [V/m]	143
Power Drift [dB]	-0.01

