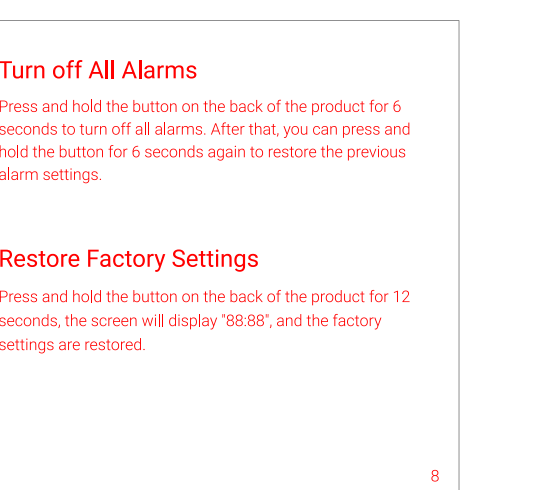
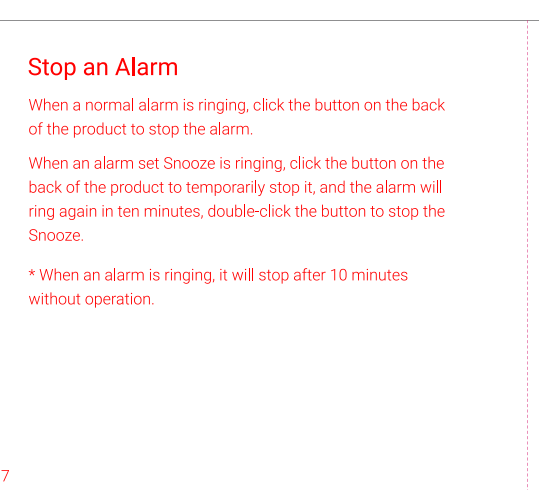
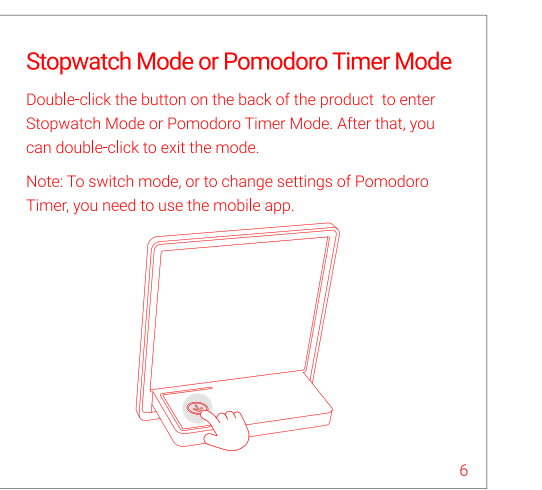
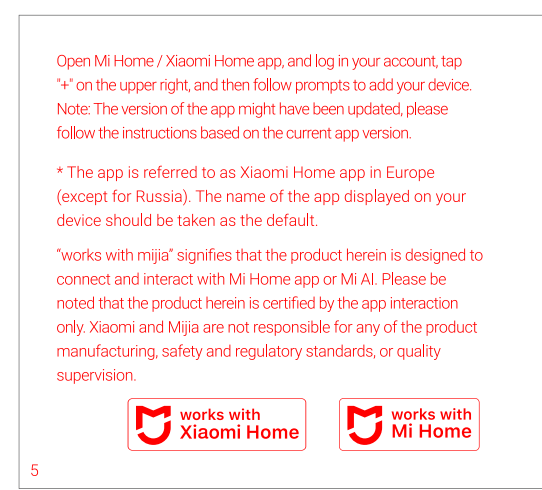
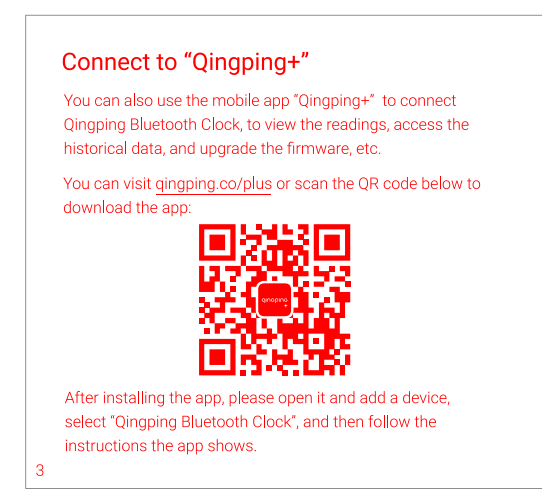
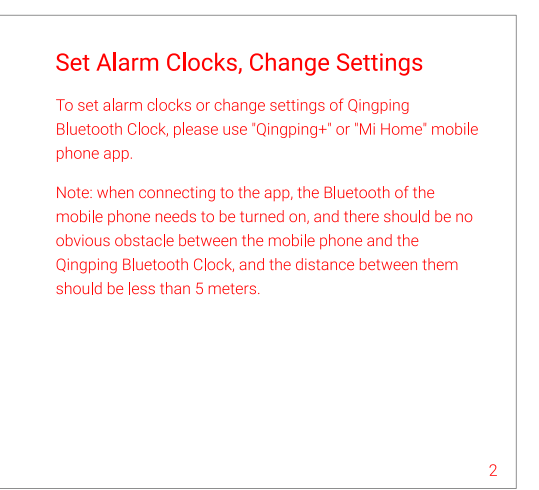
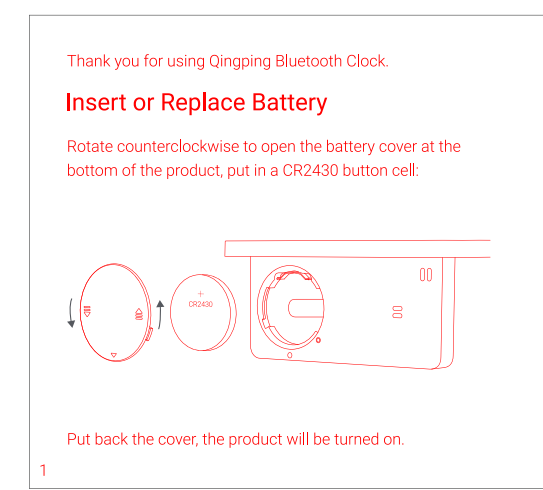




iii

iii



Measuring Items and Ranges

| Item | Range |
|-------------------|------------------------|
| Temperature | -8 ~ 50°C (-16 ~ 95°F) |
| Relative Humidity | 0 ~ 95% |

* Please do not place the product in an environment with humidity greater than 95% for a long time.

Specifications

Model: Q521
Weight: 50g (not including battery)
Size: 52.27*42.27*42mm
Material: ABS, PC
Battery: CR2032 (not included)
CR2032 (3V/200mAh)

Attention

- Do not place the unit face at the bottom of the product.
- This product is not waterproof or dustproof.
- Do not throw the battery or the product with stability into the fire or water.
- Do not disassemble the product by yourself to avoid injury.

FAQ

| Customer Problem | Answer/Solution |
|---|--|
| When the environment changes drastically, the accuracy of the measurement is affected. | When the environment changes drastically, the accuracy of the measurement is affected. Please wait for about 10 minutes before using the product again. The accuracy of the measurement will be restored. |
| When the product is used in a humid environment, the accuracy of the measurement is affected. | When the product is used in a humid environment, the accuracy of the measurement is affected. Please wait for about 10 minutes before using the product again. The accuracy of the measurement will be restored. |

Customer Problem

When the product is used in a humid environment, the accuracy of the measurement is affected.

Answer/Solution

When the product is used in a humid environment, the accuracy of the measurement is affected. Please wait for about 10 minutes before using the product again. The accuracy of the measurement will be restored.

Error Code

| Error Code on the Screen | Meaning/Solution |
|--------------------------|--|
| E1 | The environment temperature exceeded the measurement range of the product. |
| E2 | The device is malfunctioning. |

Performance Faults

The screen displayed on the screen is unresponsive or the screen cannot display content.

No response when the button is pressed.

The button is not pressed down.

The sensor is not working properly.

Warranty

In the covering and regions where Qingqing Technology (Beijing) Co., Ltd. has established branches or other sales entities, the product is provided a 1-year limited warranty service for the locally sold Qingqing Bluetooth Clock. The warranty service terms are:

1. Within 15 days from the date of the receipt of the product, the fault is found in the "Performance Faults" after the fault is confirmed by our after-sales service department, the customer can have the refund or exchange the product for free.
2. After the 15th day after the receipt of the product, the fault is found in the "Performance Faults" after the fault is confirmed by our after-sales service department, the customer can have the refund or exchange the product for free.

3. Within 12 months from the date of receipt, if the product has faults listed in the "Performance Faults", after the fault is confirmed by our after-sales service department, the customer can have the refund or exchange the product for free.

In the covering and regions where Qingqing Technology (Beijing) Co., Ltd. has not established a branch or other sales entities, the product is provided a 1-year limited warranty service for the locally sold Qingqing Bluetooth Clock. The warranty service terms are:

1. Within 15 days from the date of the receipt of the product, the fault is found in the "Performance Faults" after the fault is confirmed by our after-sales service department, the customer can have the refund or exchange the product for free.
2. After the 15th day after the receipt of the product, the fault is found in the "Performance Faults" after the fault is confirmed by our after-sales service department, the customer can have the refund or exchange the product for free.

Non-warranty

1. Unauthorized repair, misuse, collision, negligence, abuse, liquid damage, accident, abnormal usage or other causes not originally supplied with the product.
2. The warranty is not applicable.
3. Damage caused by fire, flood, etc.
4. The situation does not meet the fault listed in the "Performance Faults".

FCC Warning Statement Changes or modifications not expressly approved by the party responsible for compliance could void the user's authority to operate the equipment. This equipment has been tested and found to comply with the limits for a Class B digital device, pursuant to Part 15 of the FCC Rules. These limits are designed to provide reasonable protection against harmful interference in a residential installation. This equipment generates uses and can radiate radio frequency energy and, if not installed and used in accordance with the instructions, may cause harmful interference to radio communications. However, there is no guarantee that interference will not occur in a particular installation. If this equipment does cause harmful interference to radio or television reception, which can be determined by turning the equipment off and on, the user is encouraged to try to correct the interference by one or more of the following measures:

- Reorient or relocate the receiving antenna.
- Increase the separation between the equipment and receiver.
- Connect the equipment into an outlet on a circuit different from that to which the receiver is connected.
- Consult the dealer or an experienced radio/TV technician for help.

This device complies with part 15 of the FCC Rules. Operation is subject to the following two conditions: (1) This device may not cause harmful interference, and (2) this device must accept any interference received, including interference that may cause undesired operation.

The device has been evaluated to meet general RF exposure requirement.