

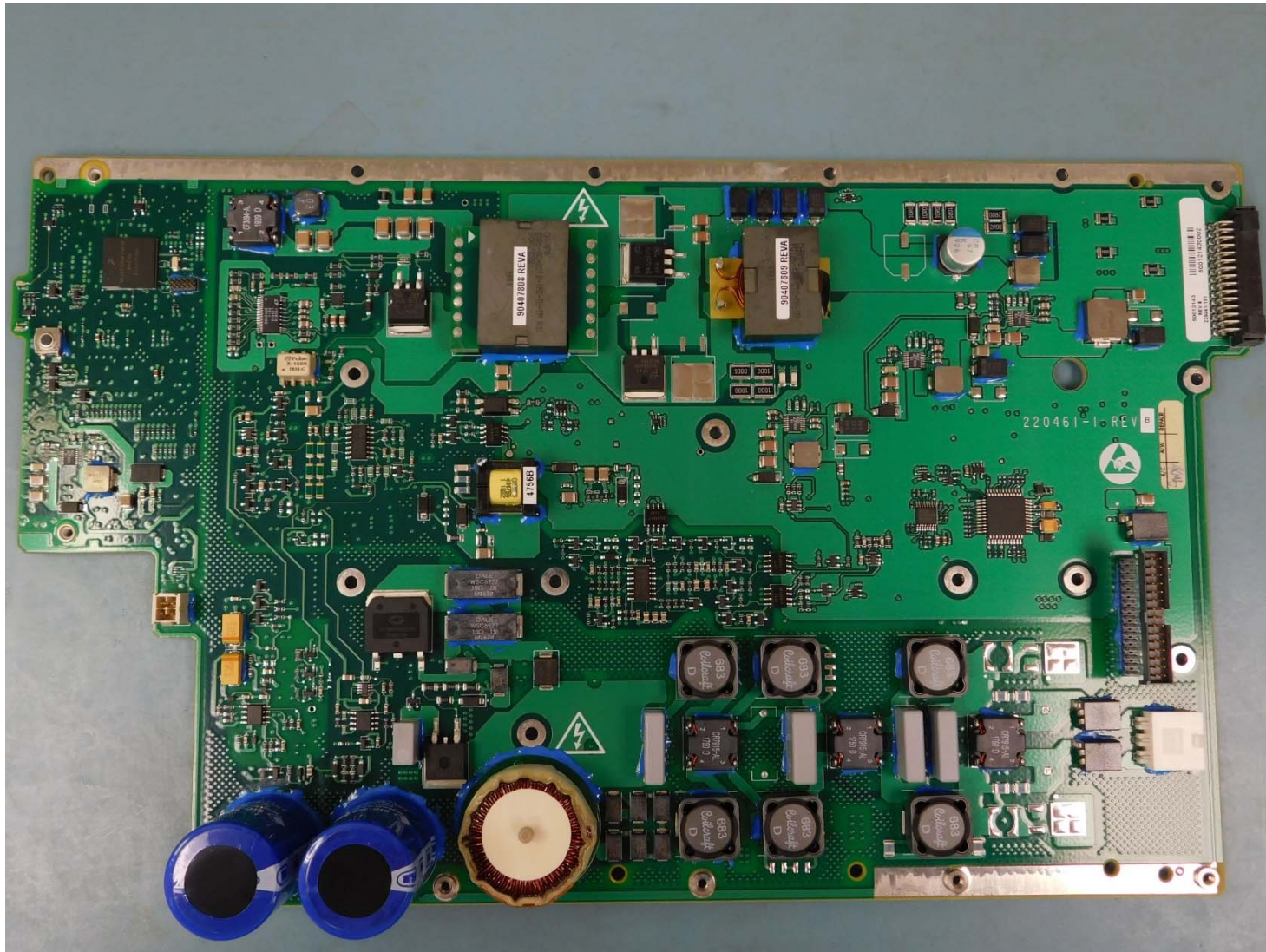
## LIST OF FIGURES

FIGURE 1: HPA PSU – POWER SUPPLY FRONT .....	2
FIGURE 2: HPA PSU POWER SUPPLY BOTTOM .....	3
FIGURE 3: HPA DRIVER AND OUTPUT BOARDS.....	4
FIGURE 4: HPA HEAT SINK .....	5
FIGURE 5: HPA BACK PLANE POWER INTERFACE .....	6
FIGURE 6: HPA BACK PLANE .....	7

**CONFIDENTIAL, UNPUBLISHED PROPERTY OF ONE OR MORE OF THE FOLLOWING - EMS TECHNOLOGIES CANADA, LTD., FORMATION INC., SKY CONNECT LLC (COLLECTIVELY “EMS AVIATION”).**

### **USE AND DISTRIBUTION LIMITED SOLELY TO AUTHORIZED PERSONNEL**

The use, disclosure, reproduction, modification, transfer or transmittal of this work for any purpose, in any form, or by any means without the prior written permission of EMS Aviation is strictly prohibited. This document does not contain technical data as defined in the International Traffic and Arms Regulations (ITAR) 22 CFR 120-130.



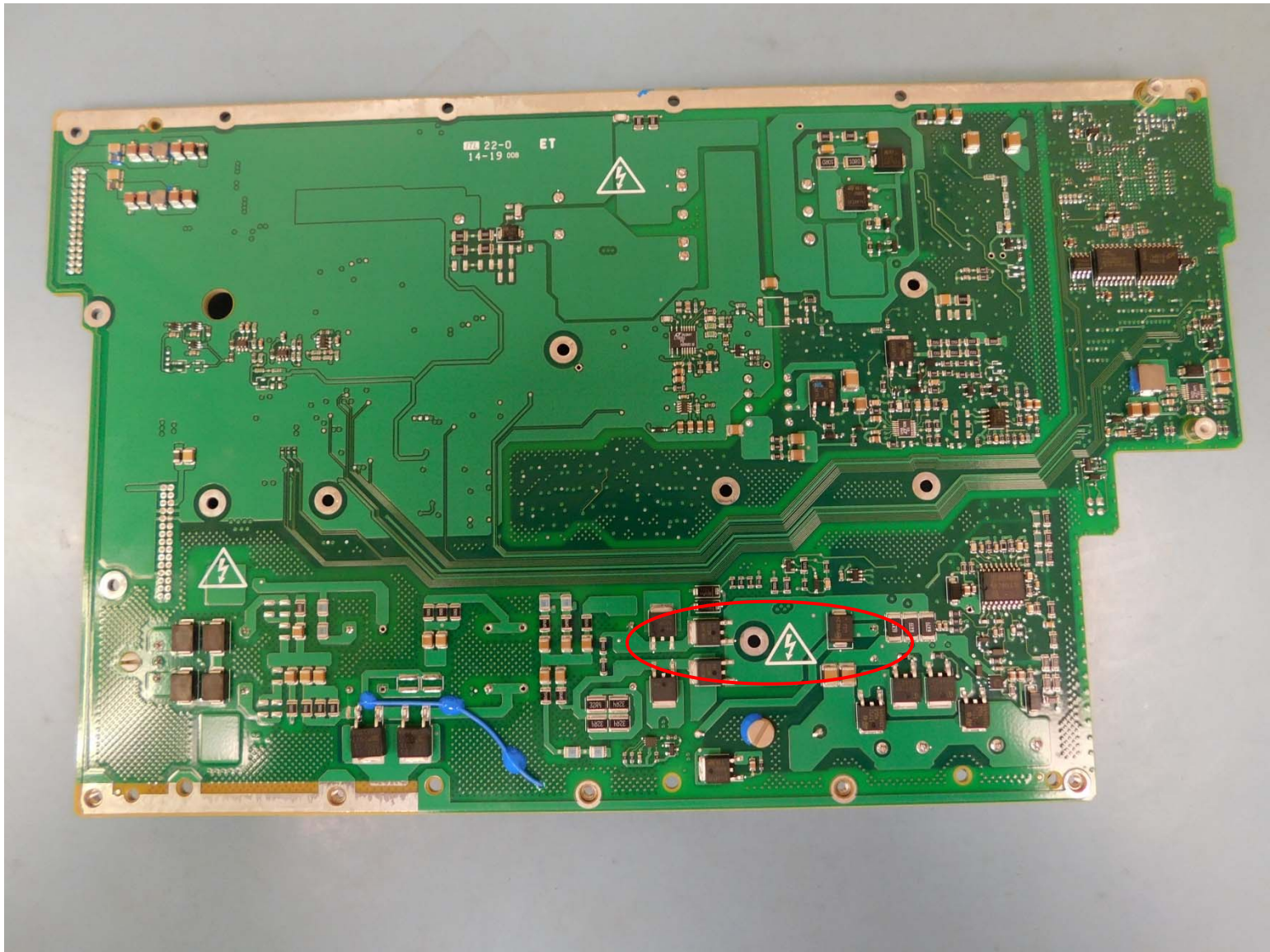
**Figure 1: HPA PSU – Power Supply Front**

**CONFIDENTIAL, UNPUBLISHED PROPERTY OF ONE OR MORE OF THE FOLLOWING - EMS TECHNOLOGIES CANADA, LTD., FORMATION INC., SKY CONNECT LLC (COLLECTIVELY “EMS AVIATION”).**

**USE AND DISTRIBUTION LIMITED SOLELY TO AUTHORIZED PERSONNEL**

The use, disclosure, reproduction, modification, transfer or transmittal of this work for any purpose, in any form, or by any means without the prior written permission of EMS Aviation is strictly prohibited. This document does not contain technical data as defined in the International Traffic and Arms Regulations (ITAR) 22 CFR 120-130.





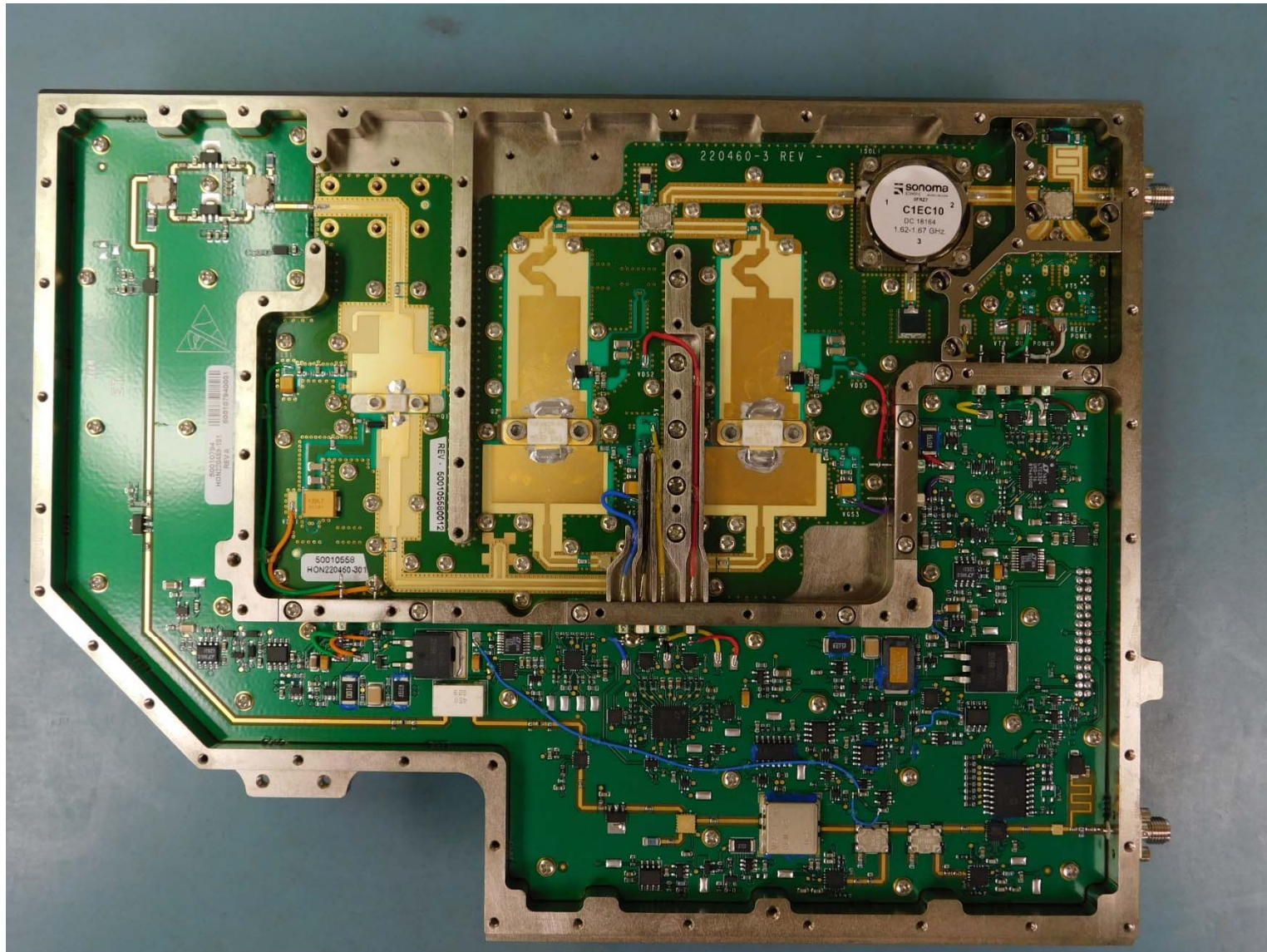
**Figure 2: HPA PSU Power Supply Bottom**

**CONFIDENTIAL, UNPUBLISHED PROPERTY OF ONE OR MORE OF THE FOLLOWING - EMS TECHNOLOGIES CANADA, LTD., FORMATION INC., SKY CONNECT LLC (COLLECTIVELY “EMS AVIATION”).**

**USE AND DISTRIBUTION LIMITED SOLELY TO AUTHORIZED PERSONNEL**

The use, disclosure, reproduction, modification, transfer or transmittal of this work for any purpose, in any form, or by any means without the prior written permission of EMS Aviation is strictly prohibited. This document does not contain technical data as defined in the International Traffic and Arms Regulations (ITAR) 22 CFR 120-130.



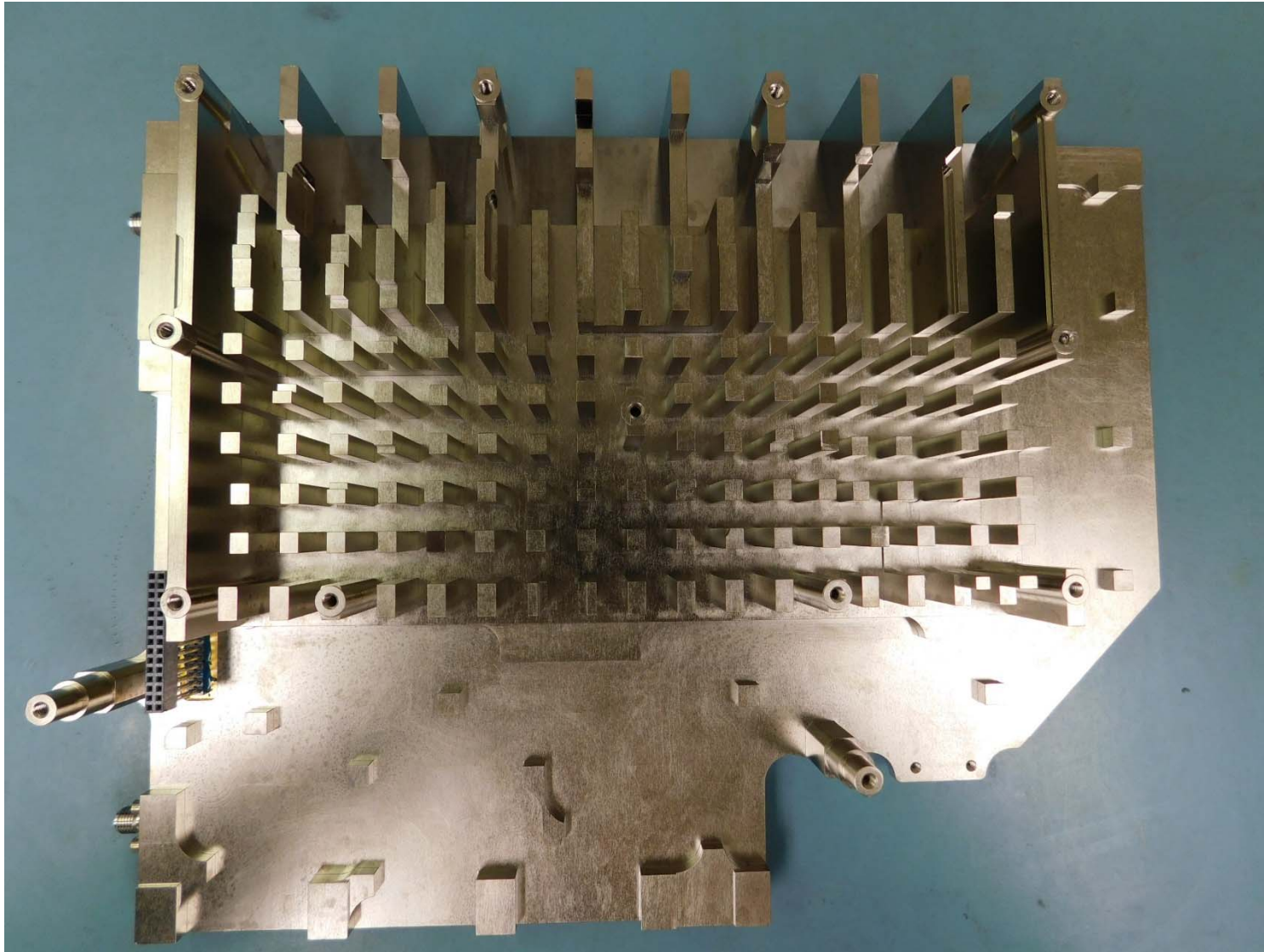


**Figure 3: HPA Driver and Output Boards**

**CONFIDENTIAL, UNPUBLISHED PROPERTY OF ONE OR MORE OF THE FOLLOWING - EMS TECHNOLOGIES CANADA, LTD., FORMATION INC., SKY CONNECT LLC (COLLECTIVELY “EMS AVIATION”).**

**USE AND DISTRIBUTION LIMITED SOLELY TO AUTHORIZED PERSONNEL**

The use, disclosure, reproduction, modification, transfer or transmittal of this work for any purpose, in any form, or by any means without the prior written permission of EMS Aviation is strictly prohibited. This document does not contain technical data as defined in the International Traffic and Arms Regulations (ITAR) 22 CFR 120-130.



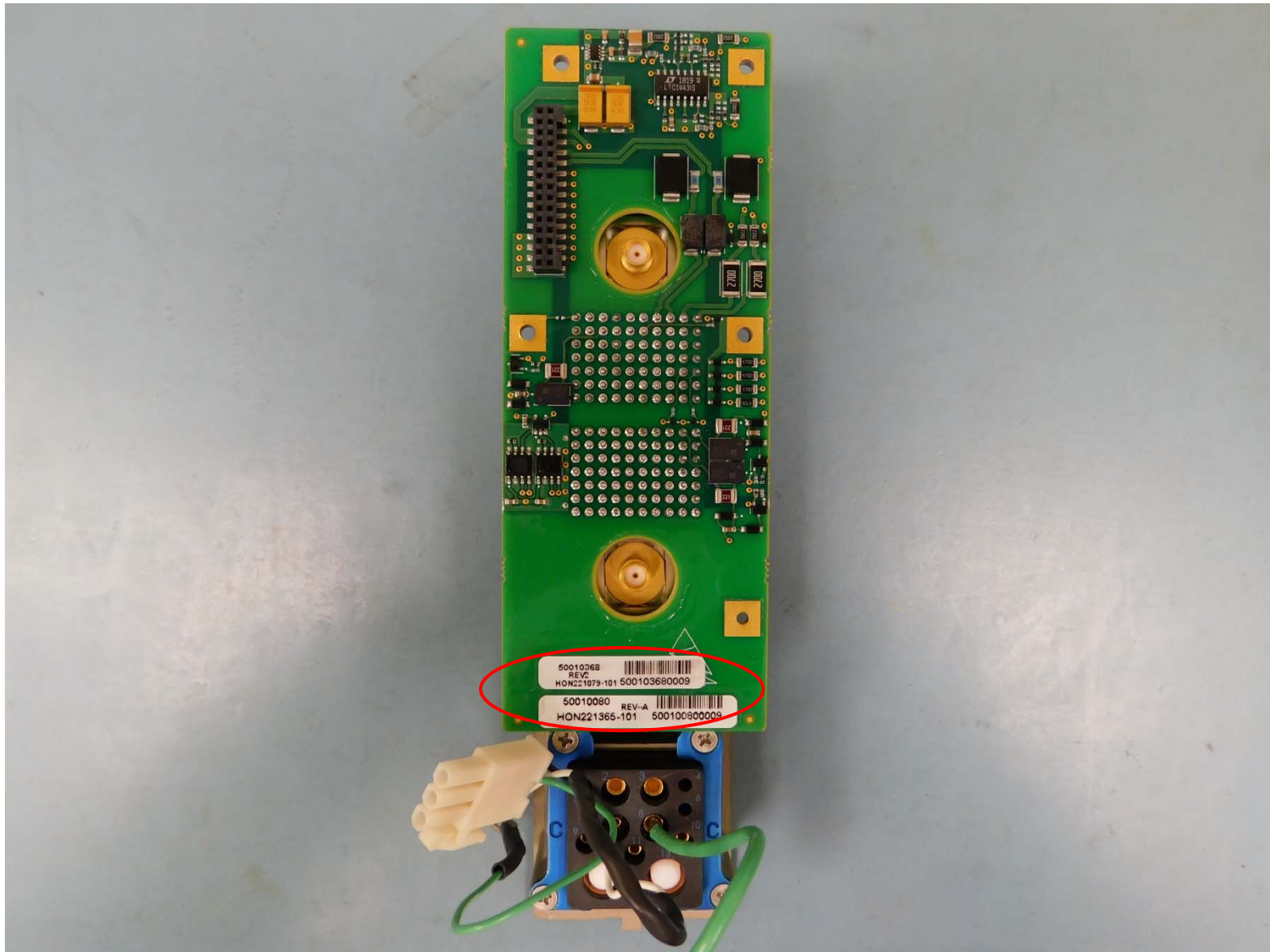
**Figure 4: HPA Heat Sink**

**CONFIDENTIAL, UNPUBLISHED PROPERTY OF ONE OR MORE OF THE FOLLOWING - EMS TECHNOLOGIES CANADA, LTD., FORMATION INC., SKY CONNECT LLC (COLLECTIVELY “EMS AVIATION”).**

**USE AND DISTRIBUTION LIMITED SOLELY TO AUTHORIZED PERSONNEL**

The use, disclosure, reproduction, modification, transfer or transmittal of this work for any purpose, in any form, or by any means without the prior written permission of EMS Aviation is strictly prohibited. This document does not contain technical data as defined in the International Traffic and Arms Regulations (ITAR) 22 CFR 120-130.



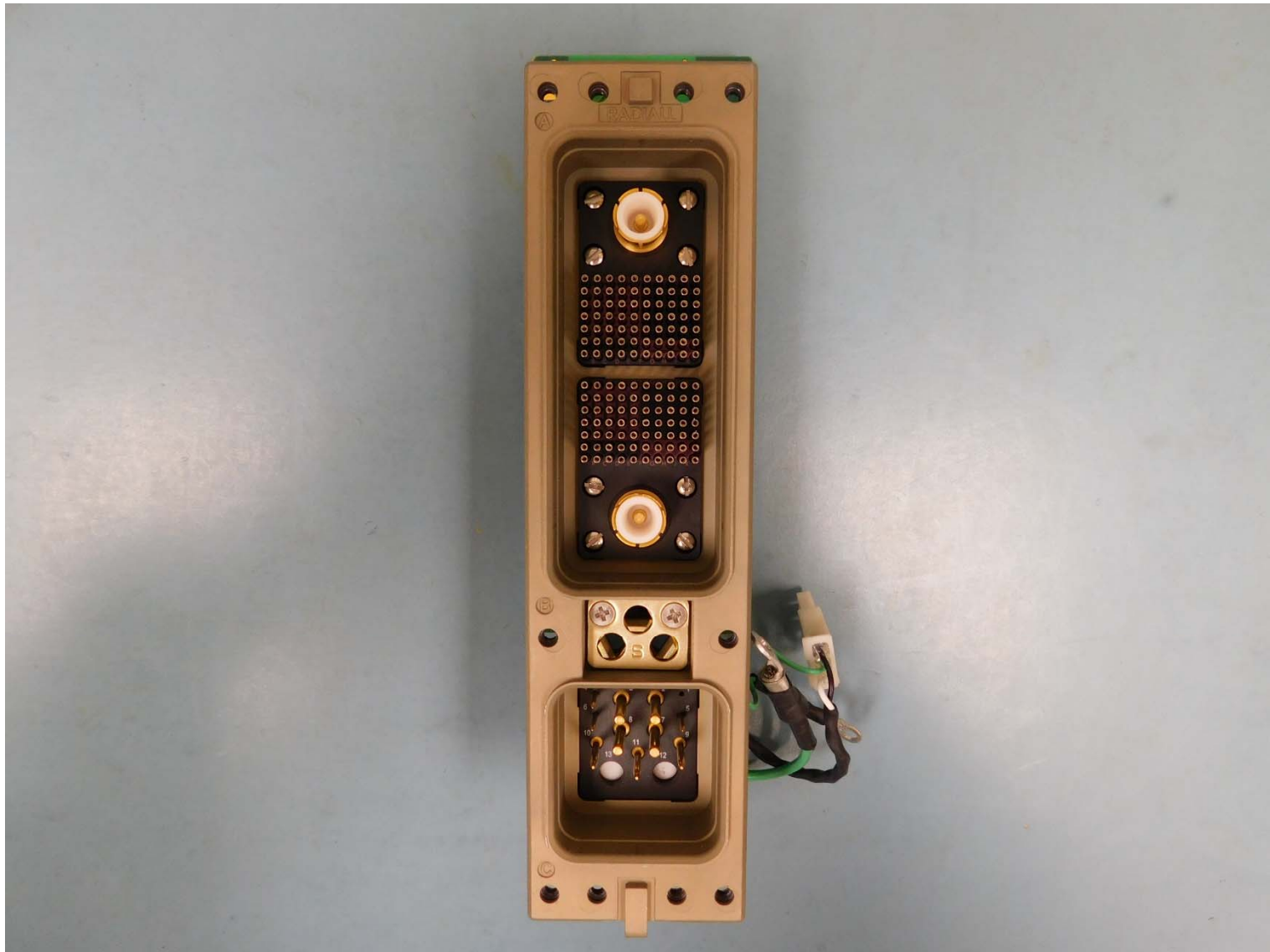


**Figure 5: HPA Back Plane Power Interface**

**CONFIDENTIAL, UNPUBLISHED PROPERTY OF ONE OR MORE OF THE FOLLOWING - EMS TECHNOLOGIES CANADA, LTD., FORMATION INC., SKY CONNECT LLC (COLLECTIVELY “EMS AVIATION”).**

**USE AND DISTRIBUTION LIMITED SOLELY TO AUTHORIZED PERSONNEL**

The use, disclosure, reproduction, modification, transfer or transmittal of this work for any purpose, in any form, or by any means without the prior written permission of EMS Aviation is strictly prohibited. This document does not contain technical data as defined in the International Traffic and Arms Regulations (ITAR) 22 CFR 120-130.



**Figure 6: HPA Back Plane**

**CONFIDENTIAL, UNPUBLISHED PROPERTY OF ONE OR MORE OF THE FOLLOWING - EMS TECHNOLOGIES CANADA, LTD., FORMATION INC., SKY CONNECT LLC (COLLECTIVELY “EMS AVIATION”).**

**USE AND DISTRIBUTION LIMITED SOLELY TO AUTHORIZED PERSONNEL**

The use, disclosure, reproduction, modification, transfer or transmittal of this work for any purpose, in any form, or by any means without the prior written permission of EMS Aviation is strictly prohibited. This document does not contain technical data as defined in the International Traffic and Arms Regulations (ITAR) 22 CFR 120-130.