



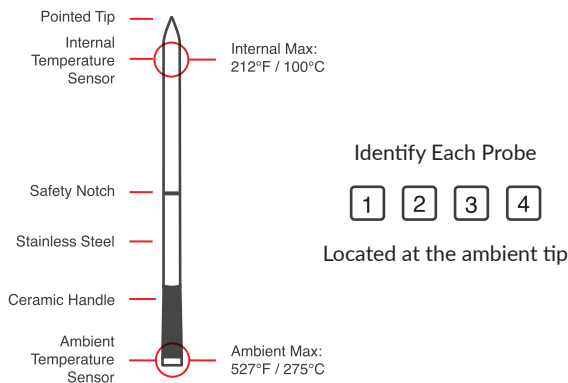
**Thank you for choosing MEATER:
The World's First Wireless Smart Meat Thermometer.**

Home cooked gourmet meals are only a few steps away!

Please follow the Important Safety Information (located behind this page and in the MEATER app) for the best MEATER experience. For more information, please visit www.meater.com.

If you need help, contact support@apptionlabs.com.

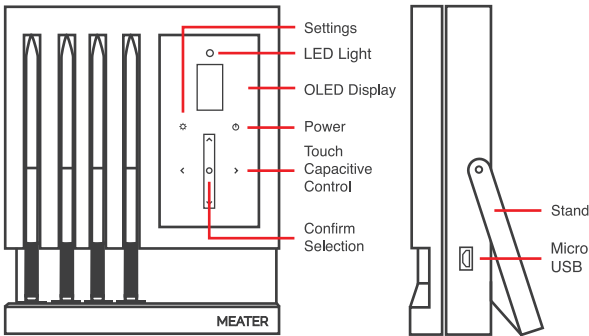
Wireless Probe



- Charge the probes by turning OFF the MEATER Block
- Charge the probes for 8+ hours before each use
- Probes last 24+ hours per charge

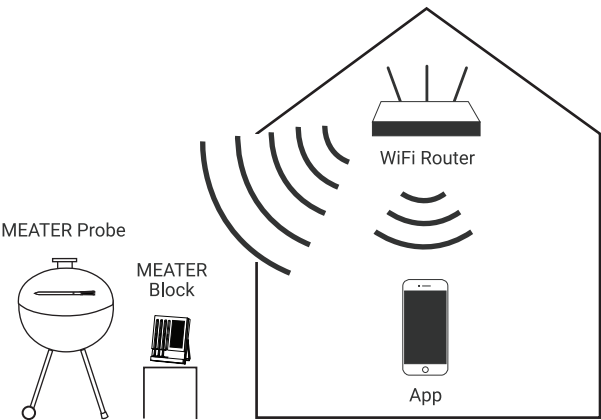
Charger

When the MEATER Block is ON, all Probes are ON

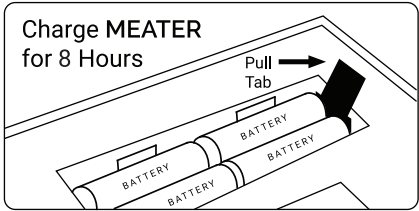


- 4 x AA battery operation: 50 hours
- USB power: 5V 500mA minimum required
(Micro USB cable and power adapter not included)
- USB power does not recharge MEATER Block batteries
- USB power takes priority over battery power

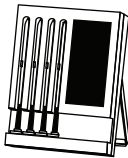
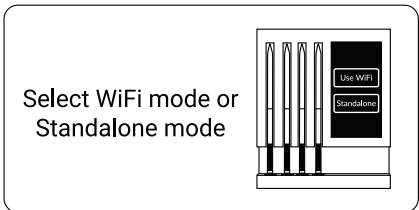
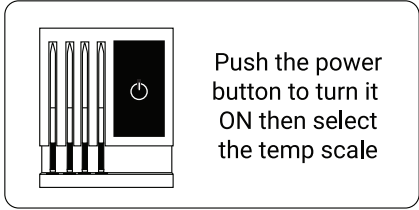
Place the MEATER Block close to Probes



Getting Started



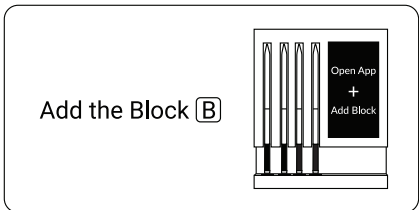
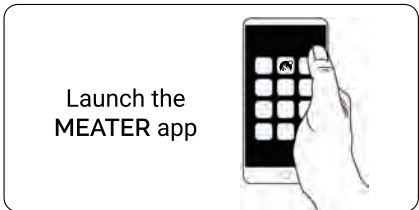
Leave the Block powered OFF to charge the MEATER probes.



Standalone Mode:
Cook without the use of your smart phone



WiFi Mode: Bluetooth to WiFi bridge only. Cook and monitor on your smart phone



Standalone mode:

To select a probe, tap ⚡

To check remaining time, internal temp, ambient temp, and target temp, tap < >

To setup, adjust, or cancel a cook, select the probe and tap [O]

To switch between Standalone and WiFi mode, turn the Block OFF then ON.



Important Safety Information

- Use MEATER only for its intended purpose.
- MEATER is designed for use in meat (food).
- To protect against the risk of electric shock, do not immerse the charging block in water or other liquids.
- To avoid damage to MEATER, insertion of the probe in the meat past the Safety Notch is necessary.
- For best performance, DO NOT insert any part of the MEATER ceramic handle into the meat.
- DO NOT use MEATER probes in a microwave or pressure cooker.
- DO NOT drop MEATER on a hard surface.
- MEATER probes are not dishwasher safe. Please hand wash with soap and water before and after each use.
- Make sure the MEATER probes are completely dry when placed back in the charger or MEATER Block.
- MEATER is water resistant, not waterproof. Do not submerge in water for long periods of time.
- Please take caution with the pointed tip of the probe.
- Probe will be very hot during or just after a cook. DO NOT touch with bare hands.
- DO NOT submerge the MEATER probe in cold water after cooking. Wait until it has cooled down prior to washing.
- MEATER is not a toy. Close supervision is necessary if MEATER is to be used near children.
- The internal sensor max is 212°F (100°C). Temps above the maximum may potentially damage MEATER.
- The ambient sensor max is 527°F (275°C). Temps above the maximum may potentially damage MEATER.
- When cooking, ensure the ambient sensor or any part of the probe is not touching any HOT cooking surface.
- Avoid applying left/right/up/down pressure on the MEATER ceramic handle when removing from the meat. To remove, pull and twist on the same horizontal axis of insertion.
- Consuming raw or undercooked meats, poultry, or seafood may increase your risk of foodborne illness. To reduce the risk, cook your food to USDA safe temperatures.
- When not in use, store MEATER in a dry and cool place.
- The MEATER Block is not waterproof. Please keep covered in inclement weather and out of dishwashers and sinks.
- The MEATER Block is not fireproof. Do not leave it on or near hot surfaces.
- Keep out of direct sunlight.

Information For The User

Warning: Changes or modifications to this unit not expressly approved by the party responsible for compliance could void the users' authority to operate the equipment.

MEATER Charger Model Number: MT-BL01
MEATER Probe Model Number: MT-PR01,MT-PR02,MT-PR03,MT-PR04
Probe FCC ID: 2AI5IMTPR
Block Charger FCC ID: 2AI5IMTBK
Patents: www.meater.com/patents

This device complies with part 15 of the FCC Rules. Operation is subject to the following two conditions: (1) this device may not cause harmful interference, and (2) this device must accept any interference received, including interference that may cause undesired operation.

Federal Communication Commission Interference Statement

This equipment has been tested and found to comply with the limits for a Class B digital device, pursuant to Part 15 of the FCC Rules. These limits are designed to provide reasonable protection against harmful interference in a residential installation. This equipment generates, uses and can radiate radio frequency energy and, if not installed and used in accordance with the instructions, may cause harmful interference to radio communications. However, there is no guarantee that interference will not occur in a particular installation. If this equipment does cause harmful interference to radio or television reception, which can be determined by turning the equipment off and on, the user is encouraged to try to correct the interference by one of the following measures:

- Reorient or relocate the receiving antenna.
- Increase the separation between the equipment and receiver.
- Connect the equipment into an outlet on a circuit different from that to which the receiver is connected.
- Consult the dealer or an experienced radio/TV technician for help.

FCC Radiation Exposure Statement:

This equipment complies with FCC radiation exposure limits set forth for an uncontrolled environment. This equipment should be installed and operated with minimum distance 20cm between the radiator & your body.

FCC use frequency range: 2402-2480MHz, 2412-2462MHz



Limited Warranty and Return Policy

Apption Labs hereby warrants that MEATER is free from defects in parts, materials and workmanship for a period of one (1) year from the date from proof of purchase. Should any repairs or servicing under this warranty be required by you during the limited warranty term, please contact the Customer Happiness Team at Apption Labs:

Email: support@apptionlabs.com

Full warranty and return policy can be found on our online website, meater.com/warranty-returns.

Full company policies can be found on our online website, meater.com/support, and supercedes any information found in this user guide.