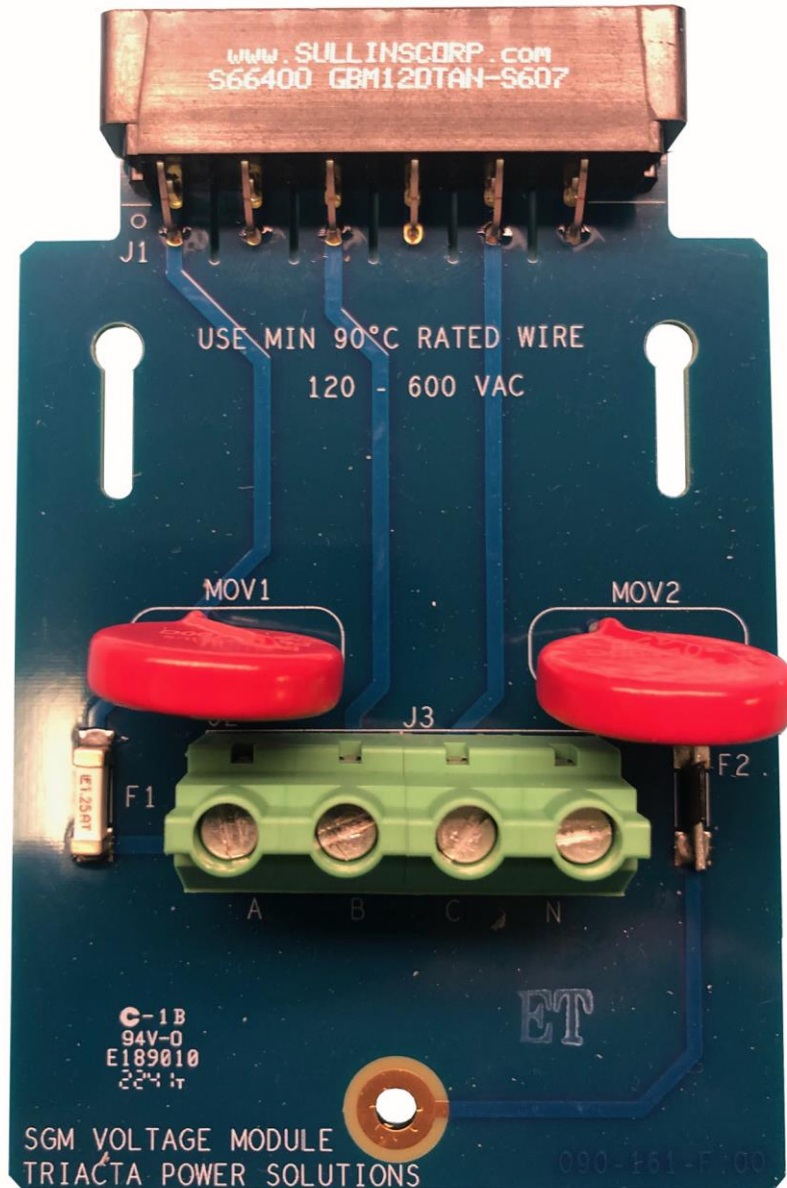


These are all of the images of modules used on the Gateway Multipoint (G5) product.

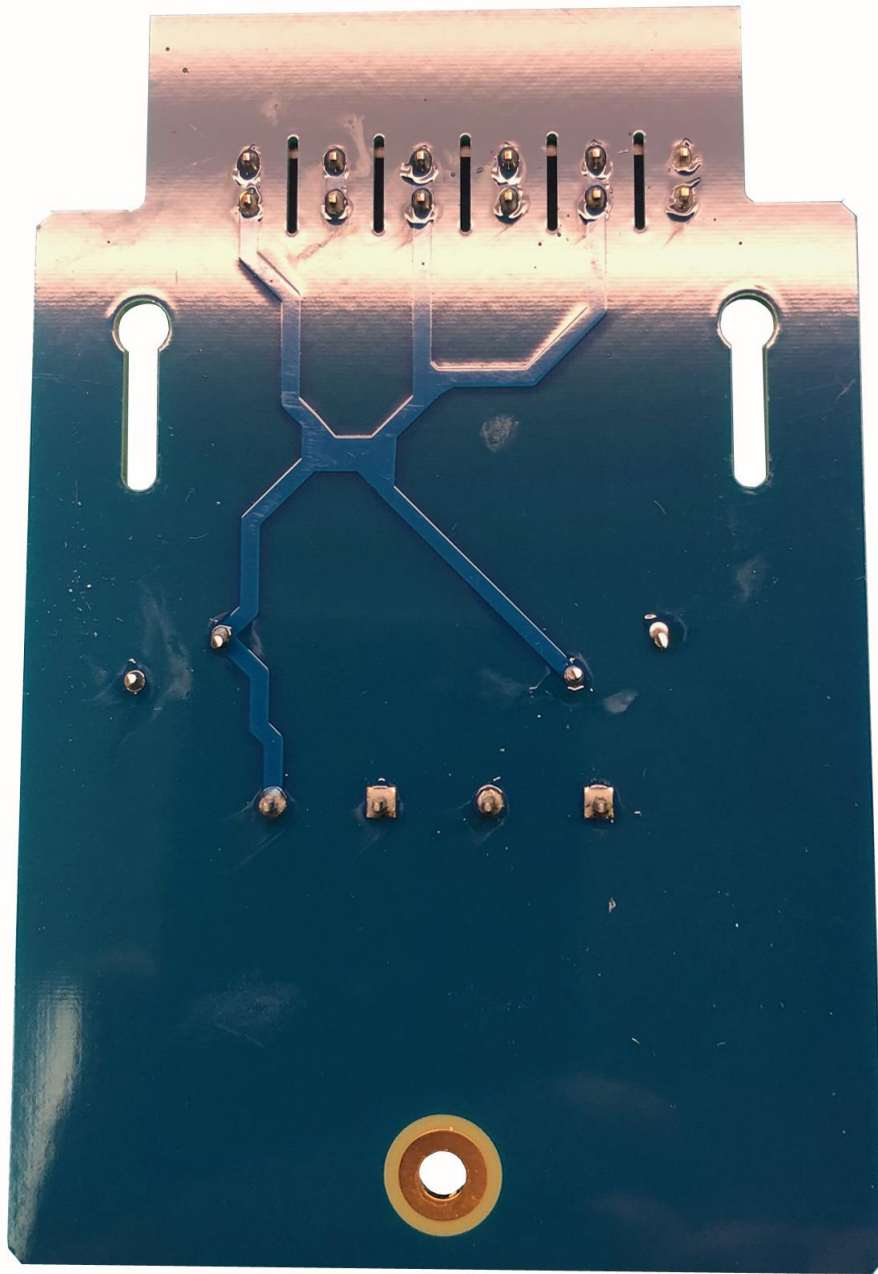
Power Entry Side 1



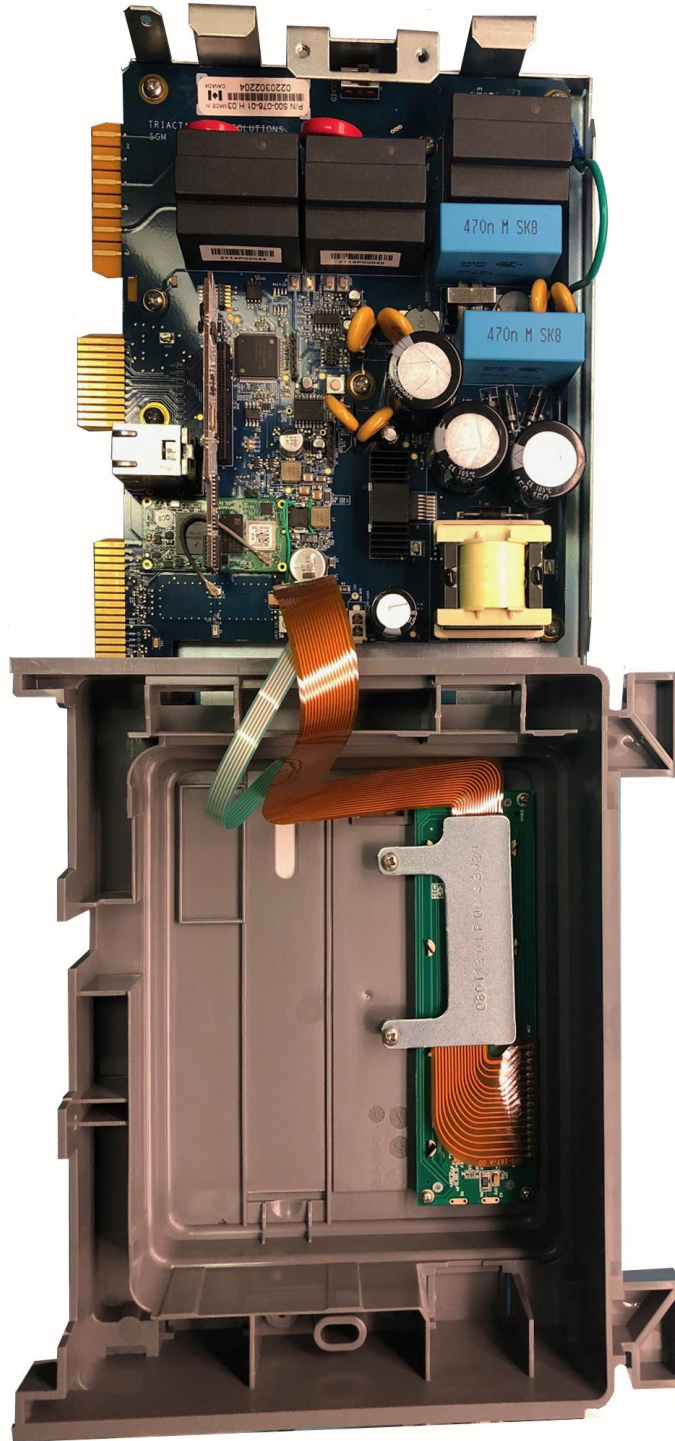
This document contains confidential information, which is proprietary to TRIACTA Power Solutions LP, a division of METERGY. No part of its contents may be used, copied, disclosed or conveyed to any party in any manner whatsoever without prior written permission from TRIACTA Power Solutions LP, a division of METERGY.

© Copyright 2023, TRIACTA Power Solutions LP, a division of METERGY.

Power Entry Side 2

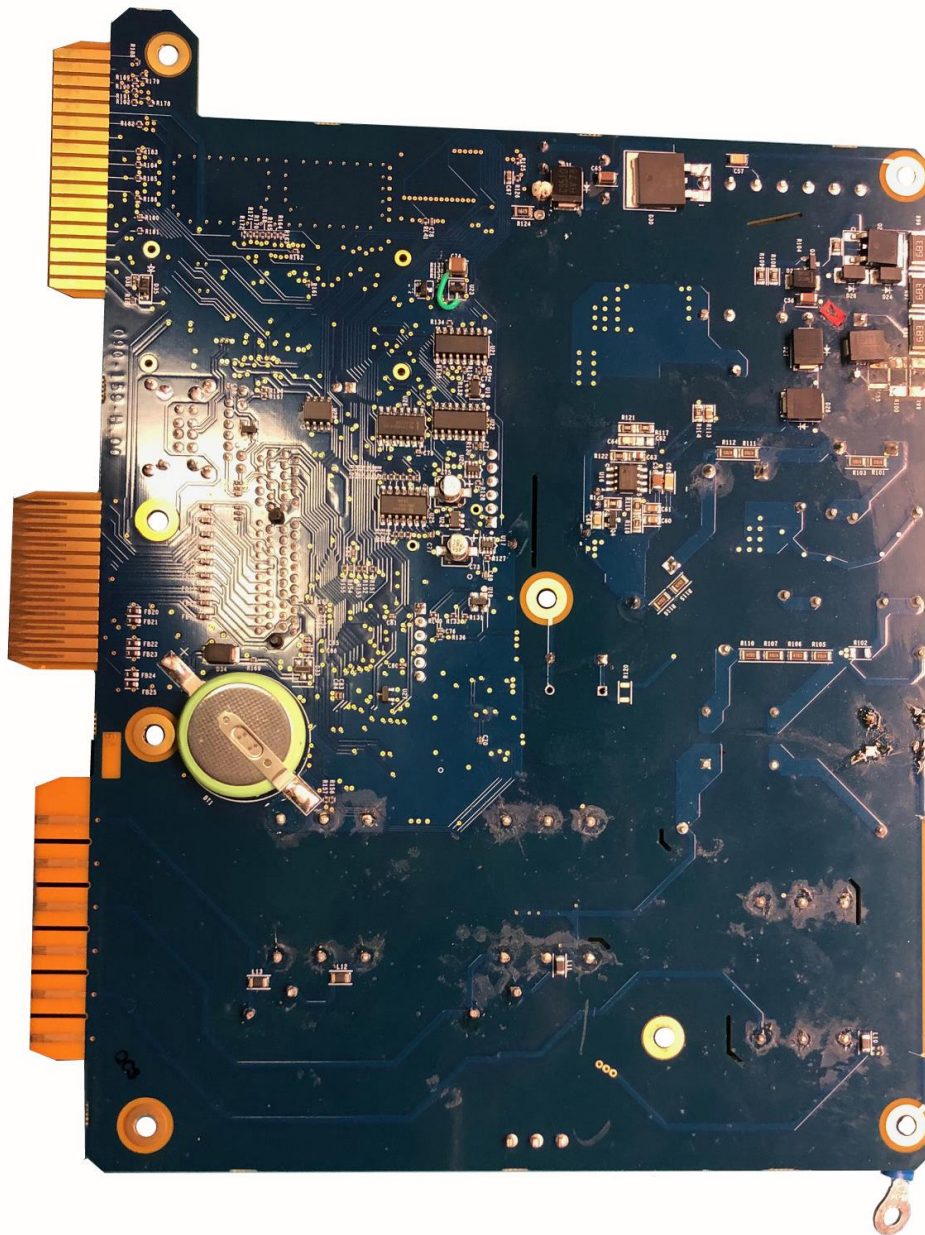


Meter Module with Cover

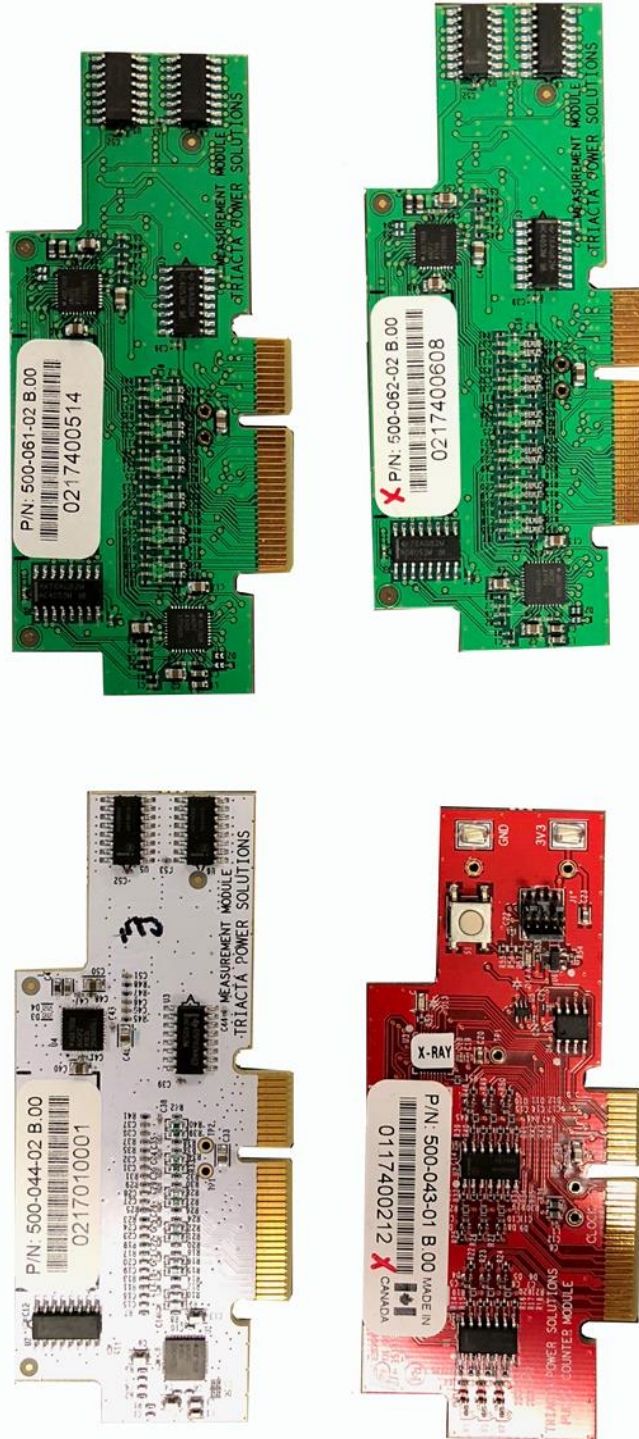




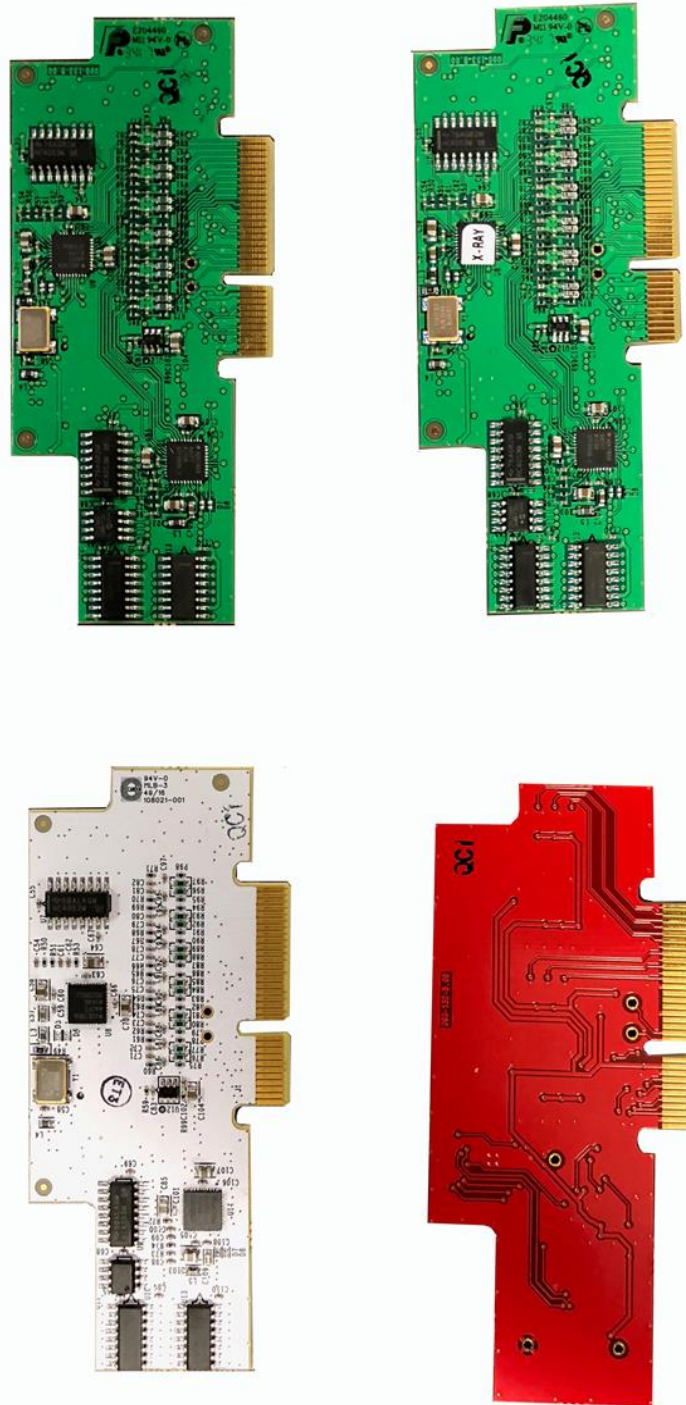
Motherboard Side 2 (without Base)



Measurement Modules 3 and Pulse Module 1 (Side 1)

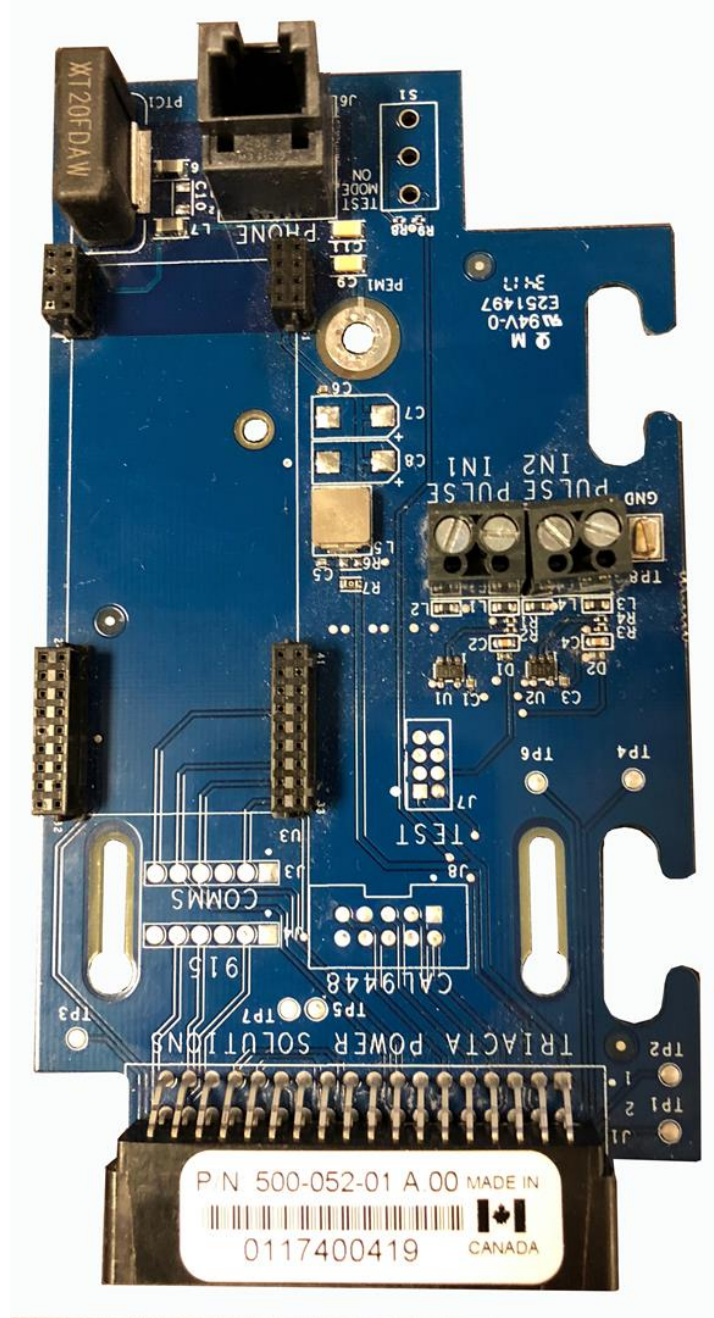


Measurement Modules 3 and Pulse Module 1 (Side 2)

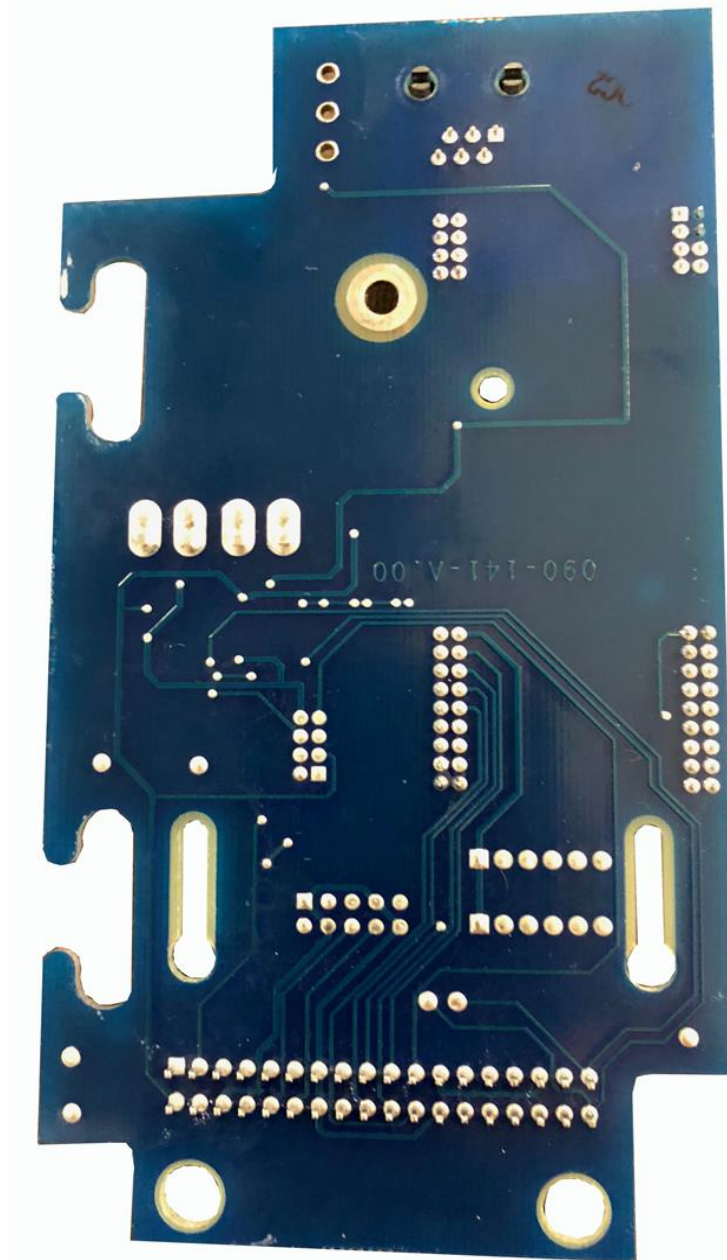




Communications Module (Side 1)

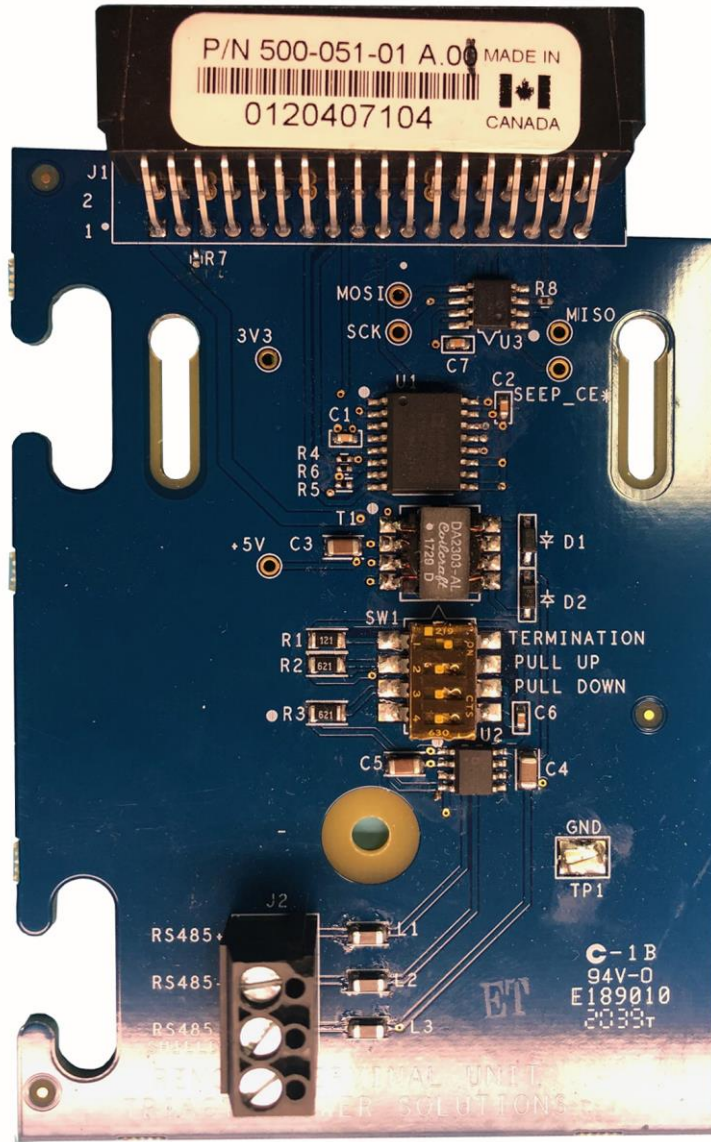


Communications Module (Side 2)

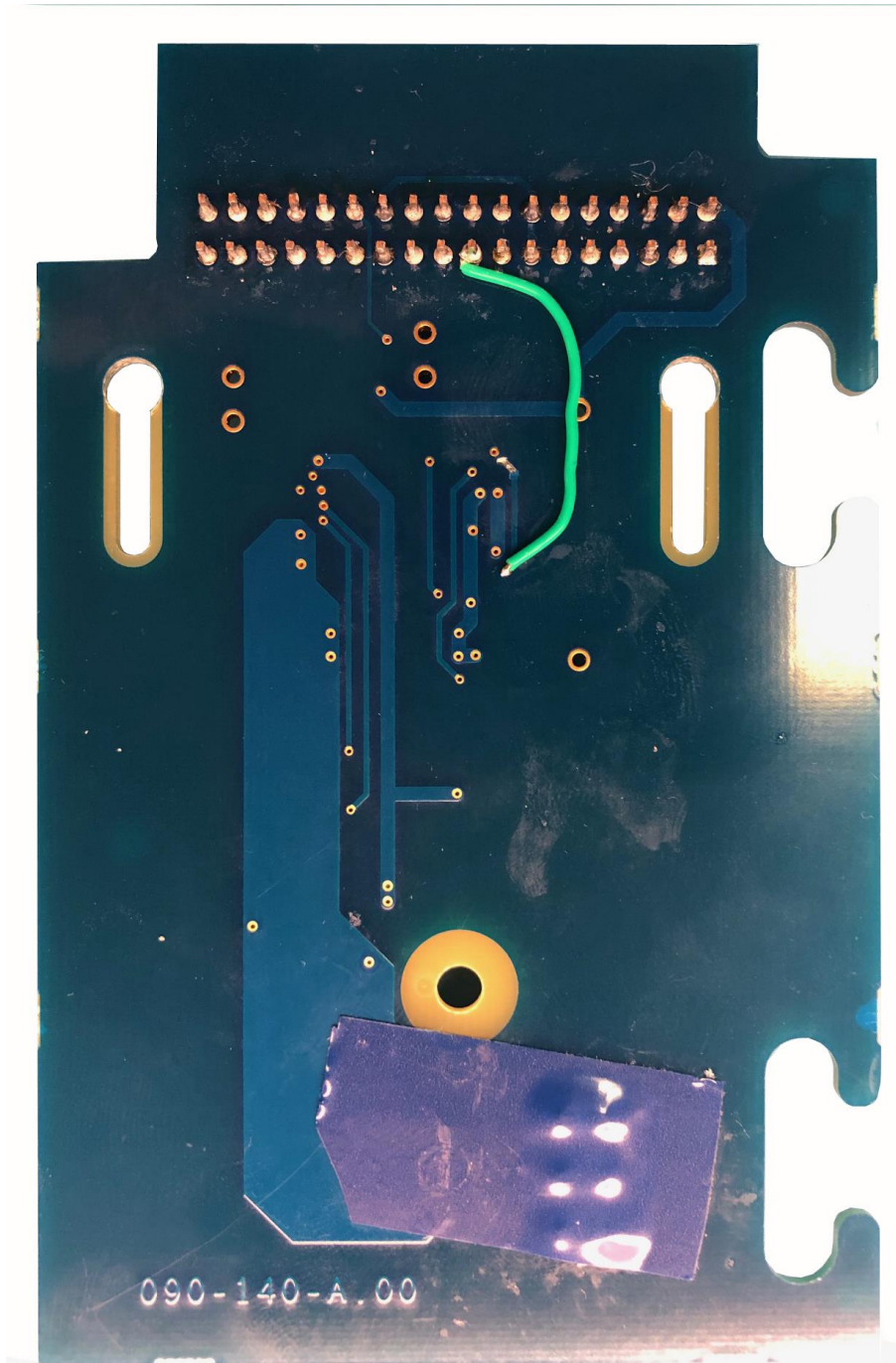




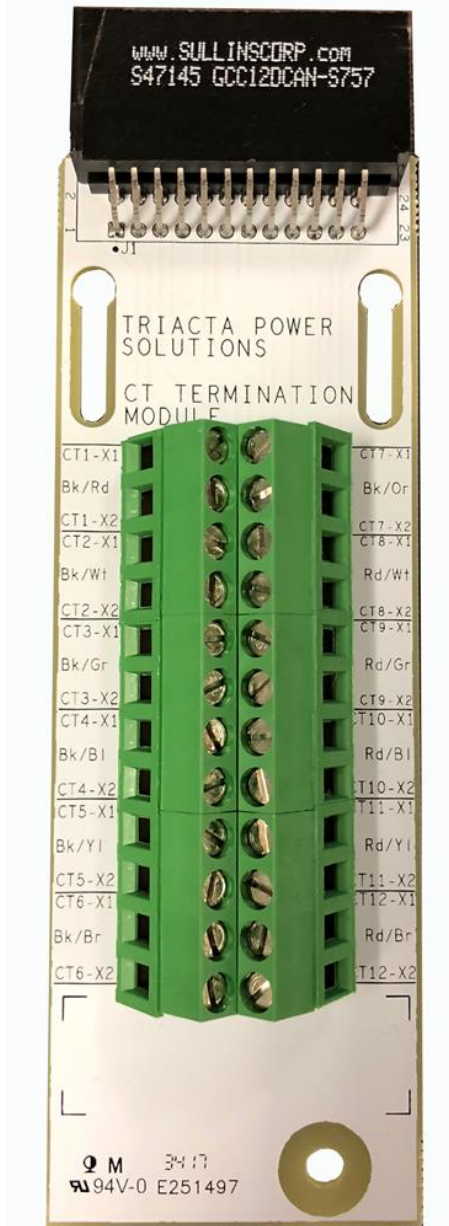
Communications Module (RTU Side 1)



Communications Module (RTU Side 2)

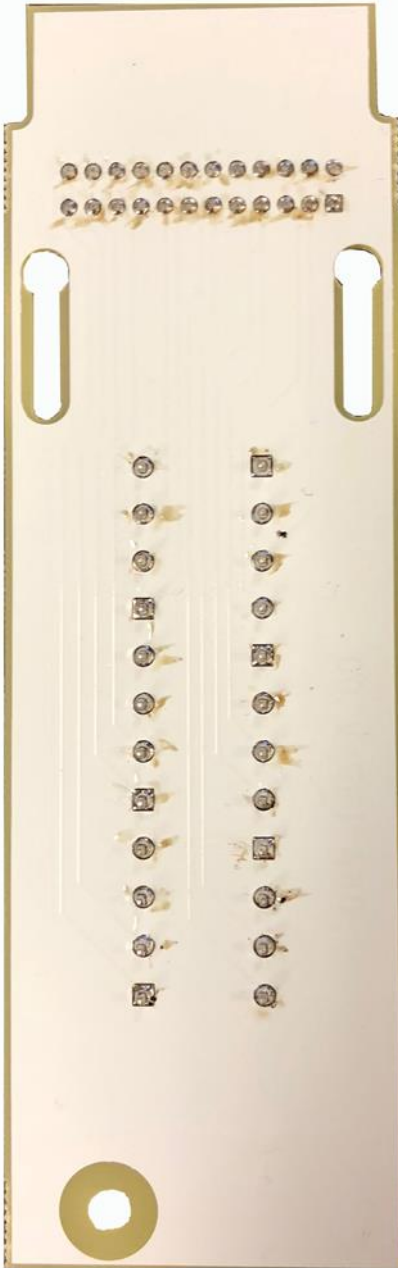


# CT Termination Module (Side 1)

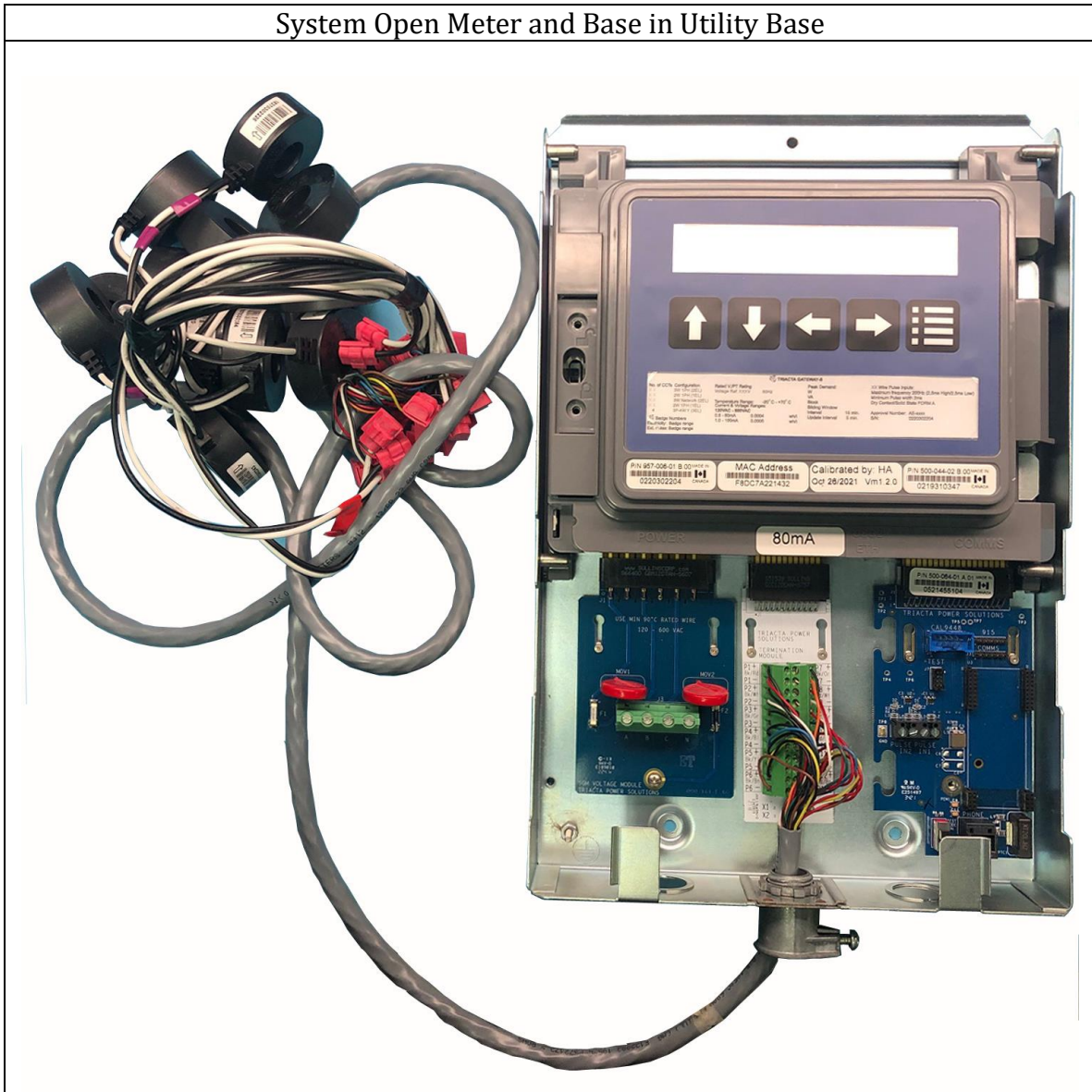




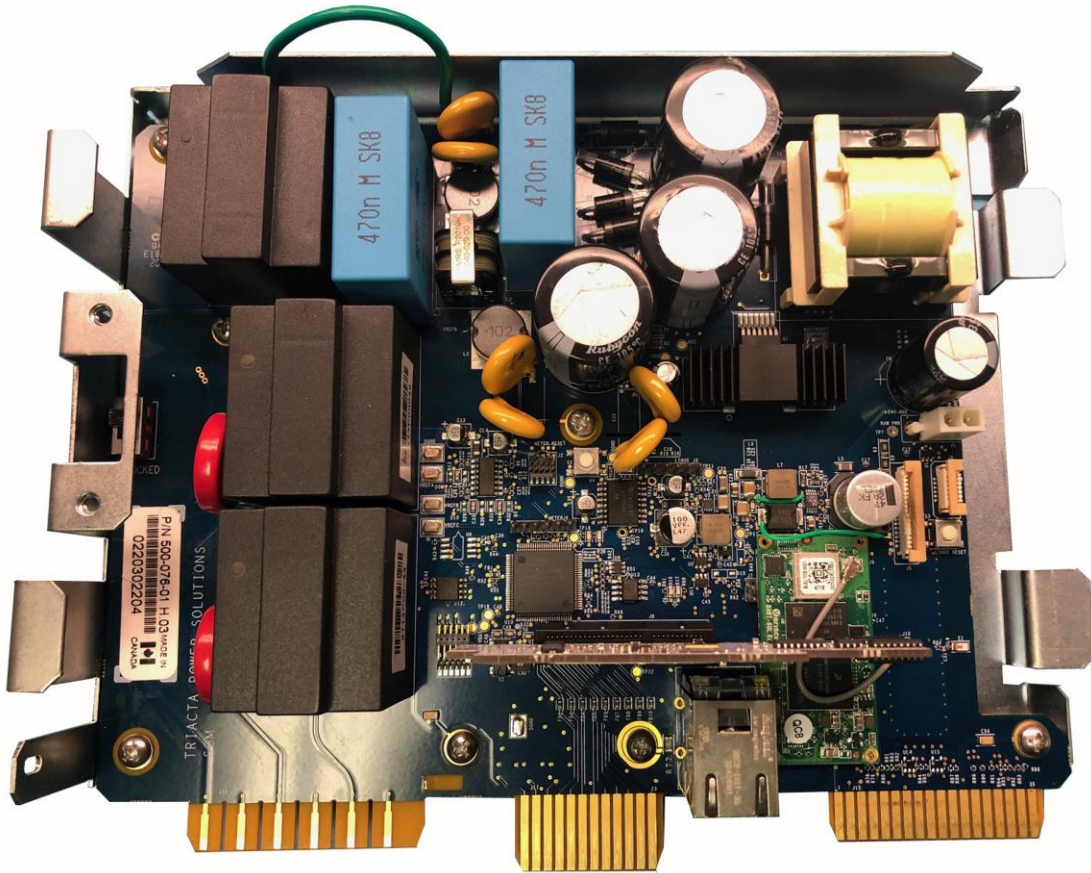
CT Termination Module (Side 2)



## System Open Meter and Base in Utility Base

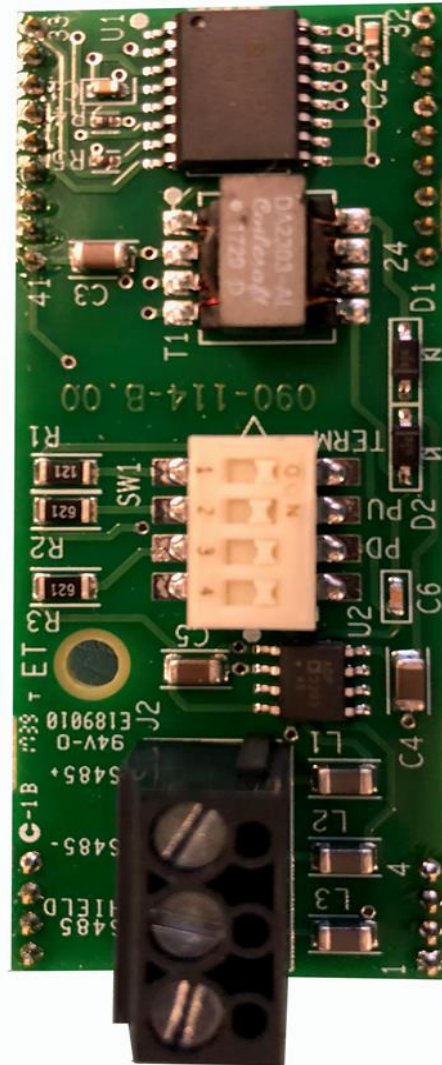


## Measurement Modules in Slots of Motherboard





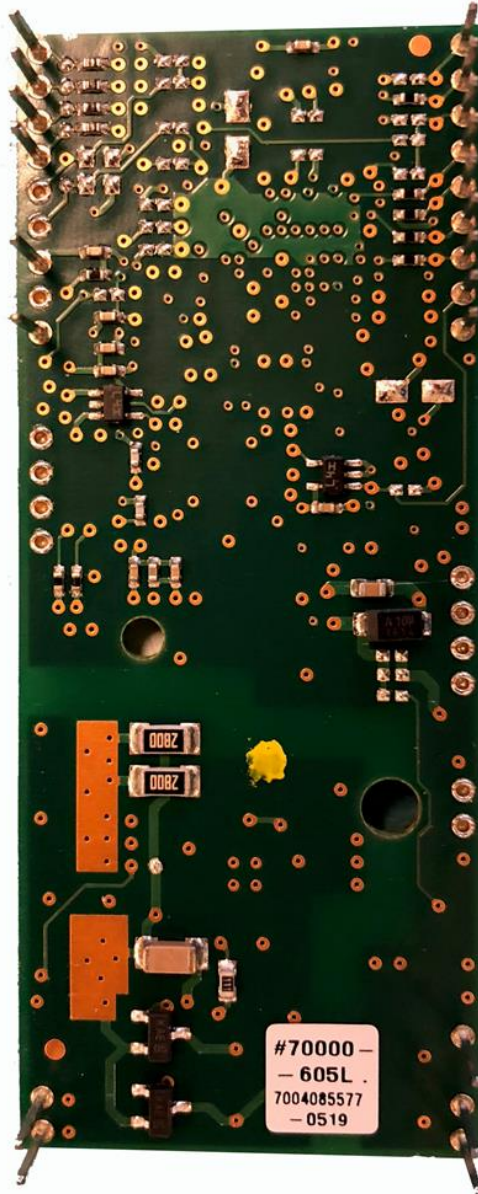
RTU Module (Side 1) Note: Fits into Communications Module



RTU Module (Side 2) Note: Fits into Communications Module



Modem Module (Side 2) Note: This plugs into Communications Module





Modem Module (Side 1) Note: This fits into the Communications Module

