

# Test Setup Photos

## EMI - Radiated Measurement Photos

### Semi-anechoic Chamber #1

FCC Part 15C	FCC Part 15E	Test Items	
<b>15.205 / 15.209</b>	<b>15.205 &amp; 209 / 407(b)(1)(2)(5)(6)</b>	General Field Strength Limits (Restricted Bands and Radiated Emission Limits)	Tx
<b>15.205 / 15.209</b>	<b>15.205 &amp; 209 / 407(b)(1)(2)(5)(6)</b>	General Field Strength Limits (Restricted Bands and Radiated Emission Limits)	Rx

### ThinkPad G40 Series



Rear view



Front view

## ThinkPad X30, X40 Series



Rear view



Front view

# EMI - Conducted Measurement Photos

EMI conducted room (shield room)

FCC Part 15C	FCC Part 15E	Test Items	
15.207	15.207 / 407(b)(5)	AC Wireline Conducted emissions	Tx
15.207	15.207 / 407(b)(5)	AC Wireline Conducted emissions	Rx

## ThinkPad G40 Series



## ThinkPad X30 Series



## ThinkPad X40 Series

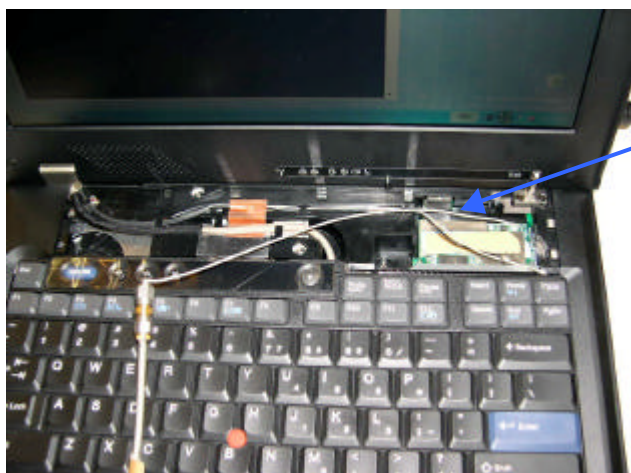


## Conducted Measurement Photos

### EMI Semi-anechoic Chamber #1, Operation Room

FCC Part 15C	FCC Part 15E	Measurement Items	
15.247(a)(2)	15.407(a)(1), (2)	Bandwidth at 6 dB or 26 dB blow	Tx
15.247(b)(3)		Conducted Peak transmit output power	
15.247(d)		Peak Power Spectral Density	
15.247(c)		Out of Band Emissions, Occupied BW (20dB BW)	
15.215(c)			
	15.407(a)(6)	Peak Excursion	

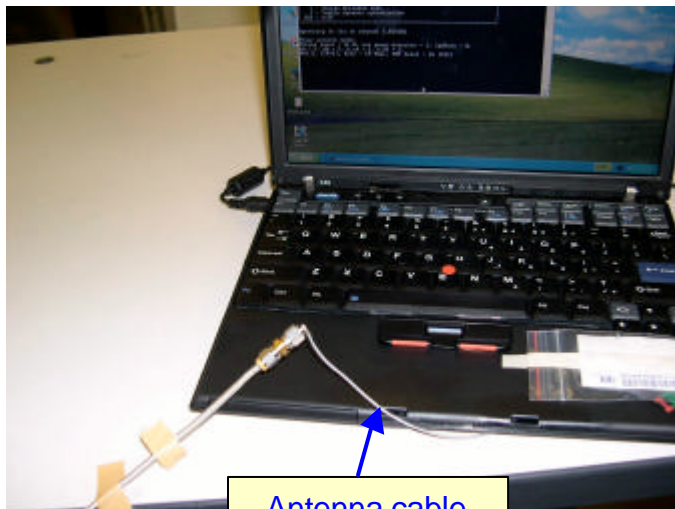
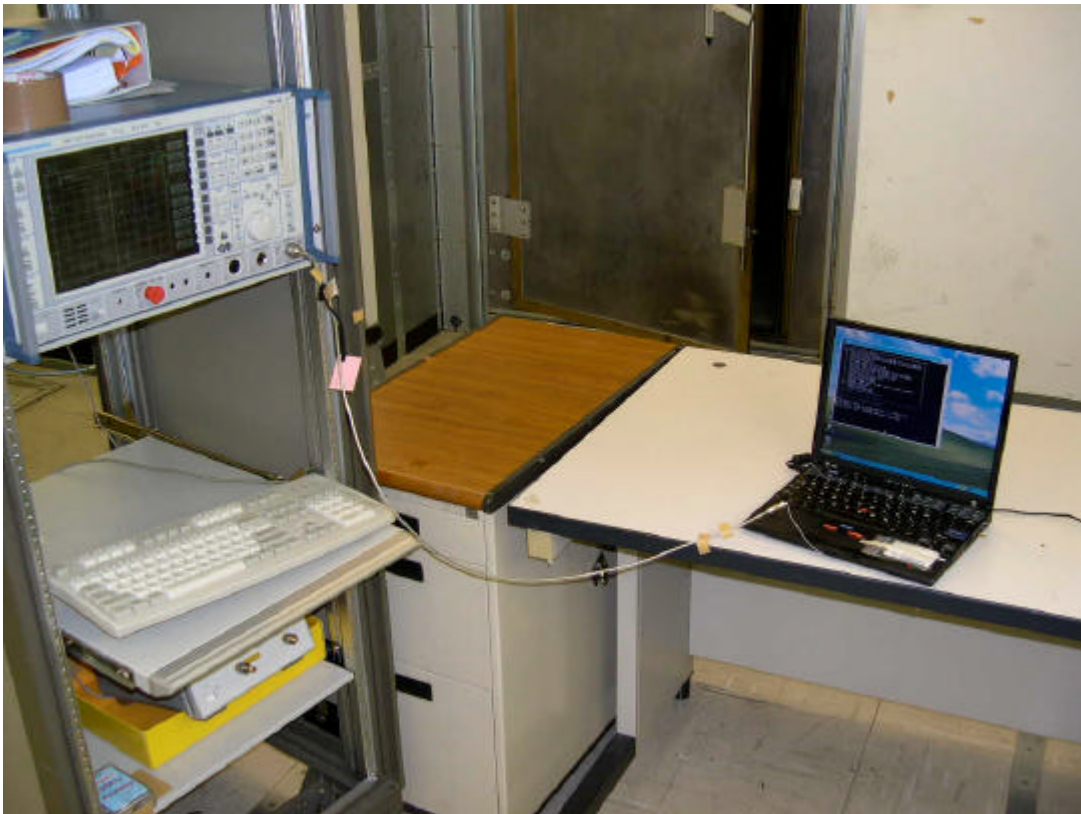
### ThinkPad G40 Series



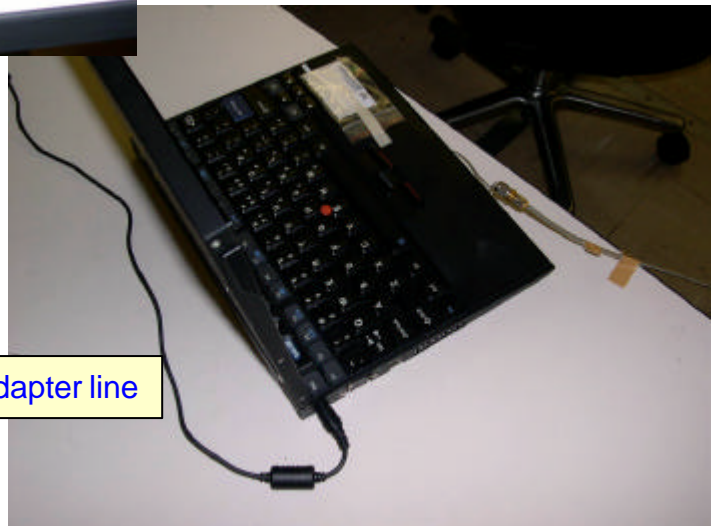
Antenna cable



## ThinkPad X30, X40 Series



Antenna cable



AC Adapter line