

Parameter Information

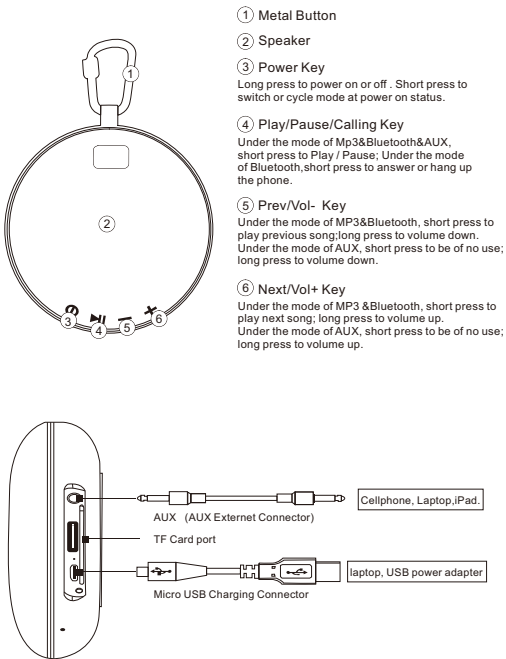
Model : OZ-X5
Bluetooth : 4.1+EDR compliant
Charging Voltage : USB DC 5V /600mA
Li-ion battery: 3.7V/800mAh
Output power: 3W
Speaker impedance: 4Ω
Speaker: D45mm 4Ω 5W
Distortion factor: ≤1%
Frequency range: 100Hz-20KHz above
SNR: ≥ 95dB
AUX IN: Φ3.5 Input connector
Charging time: 1.5 hours
Playing time: 5 hours
Product Size: D115*H39mm
Weight: 190g

Include accessory : 1pc\*USB Cable ,1pc \*3.5mm stereo audio jack.

NOTICE

- Do not throw the product in the fire or place it in a very hot enviroment.
- Do not dismantle the component or make any modifications to the product.
- The user should ask for the detailed instructions and warnings of the product before buying it for the minors.
- All products have passed the strict quality inspection. If you find the product over heating, having a peculiar smell,deformation,etc. Please stop using immediately and contact the manufacturing agents.

Product Part



MANUAL

Make life simple & beautiful

Enjoy various playing mode

A. Bluetooth mode:

switching on the Speaker,it's default BT MODE (or short press MODE button to switch to MP3 MODE), the green light is on, and you will hear a "beep" sound which means the bluetooth receiving module is running correctly, when the speaker is connected with the cell phones (or other devices) with BT function successfully, you can start to Play music, short press the NEXT button for the next song, short press PREV button for last song. short press Play/Pause button to Play/Pause the song.

B. MP3 mode:

Insert the TF card into the speaker,it will automatically switch to MP3 MODE (or short press MODE button to switch to MP3 MODE (TF card was inserted), the green light is on. When you insert the TF card into the speaker, it will automaticly play songs.Short press NEXT button for the NEXT song, short press the PREV button for the last song, short press PLAY/PAUSE button to PLAY/PAUSE the song. When you Pull out the TF card, it will switch to the BT mode.

C. AUX mode :

When plug in AUX cable, will enter AUX mode automatically(or press MODE button to switch to AUX mode (with 3.5mm AUX cable plugged in) ),red light shinning,then ready for playing.Pull out AUX cable will recover to BT mode.

PODUCT WARRANTY CARD

User name: \_\_\_\_\_  
Tel: \_\_\_\_\_  
Address: \_\_\_\_\_  
Product name: \_\_\_\_\_  
Product model: \_\_\_\_\_  
Purchase date: \_\_\_\_\_  
Product fault description: \_\_\_\_\_  
\_\_\_\_\_  
\_\_\_\_\_  
Seller's information: \_\_\_\_\_  
Tel: \_\_\_\_\_  
Sale's date: \_\_\_\_\_  
\_\_\_\_\_

FCC STATEMENT :

This device complies with Part 15 of the FCC Rules. Operation is subject to the following two conditions:  
(1) This device may not cause harmful interference, and  
(2) This device must accept any interference received, including interference that may cause undesired operation.  
Warning: Changes or modifications not expressly approved by the party responsible for compliance could void the user's authority to operate the equipment.  
NOTE: This equipment has been tested and found to comply with the limits for a Class B digital device, pursuant to Part 15 of the FCC Rules. These limits are designed to provide reasonable protection against harmful interference in a residential installation. This equipment generates uses and can radiate radio frequency energy and, if not installed and used in accordance with the instructions, may cause harmful interference to radio communications. However, there is no guarantee that interference will not occur in a particular installation. If this equipment does cause harmful interference to radio or television reception, which can be determined by turning the equipment off and on, the user is encouraged to try to correct the interference by one or more of the following measures:  
Reorient or relocate the receiving antenna.  
Increase the separation between the equipment and receiver.  
Connect the equipment into an outlet on a circuit different from that to which the receiver is connected.  
Consult the dealer or an experienced radio/TV technician for help.

RF warning statement:

The device has been evaluated to meet general RF exposure requirement. The device can be used in portable exposure condition without restriction.

Do not attempt to open or disassemble the product,such action will void the warranty.

RoHS CE