

# DESIGN

## BTH01 Quick User Guide

Wireless Headphones & Transmitter Set  
Units auto-reconnect each time they're turned on



- 01 -

### Warranty & Customer Support

For questions, assistance, support, or warranty claims please contact us with E-mail address as follows:  
[contact@design-tech.com](mailto:contact@design-tech.com)  
[www.design-tech.com](http://www.design-tech.com)



### Package Contents

- BTH01 Headphones
- BTH01 Transmitter/Charging dock
- Micro USB Power Cable
- 3.5mm Audio Cable
- 3.5mm Female to RCA Male Cable
- Optical Cable
- 6.35mm to 3.5mm adapter(for AV receiver)
- User Manual
- Power Adapter

- 02 -

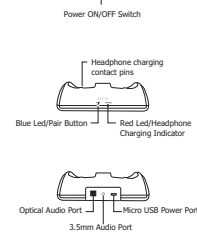
### Overview

#### Headphones:



- 03 -

#### Transmitter:



- 04 -

### LED Indicators of the transmitter

LED Indicator	Status
Flashing Red and Blue alternately	Pairing mode
Solid Blue LED	Connected
Blue LED flashes once per second	Power on and not connected
Red LED on/off	Headphone Charging/Charging complete

### LED Indicators of the headphones

LED Indicator	Status
Flashing Red and Blue alternately	Pairing mode
Blue LED flashes once in 8 seconds	Connected
Blue LED flashes twice in 5 seconds	Power on and not connected
Red LED on/off	Charging/charging complete
Red LED flashes twice in 7 seconds with reminding voice	Low battery

- 05 -

### Turn on BTH01

#### Power up the transmitter/charging dock

Connect the transmitter/charging dock to a compatible power source using AC adapter, Slide ON/OFF switch to "ON" position, POWER LED indicator lights up **BLUE**.



#### Charge and turn on the headphone

Charge headphone for 2.5 hours prior to the initial use: Place the headphone on transmitter/charging dock, the charging begins automatically, the CHARGE LED on the transmitter/charging dock lights up **RED**. When the charging is complete, the CHARGE LED on the transmitter/charging dock will turn off.



- 06 -

### Turn on the headphone:

The headphones turn on automatically when you take it away from the transmitter/charging dock or wear them on your ears. You could also press and hold the multifunction button for 3 seconds to turn on the headphones manually.

Then the headphones will auto connect to the transmitter and the transmitter LED indicator will turn **SOLID blue**. The auto-connection will take around 1-2 minutes. If the headphones volume is too low, please insure both Headphones & TV volume and make them both at the right level. Adjust Volume on Headphone: Short press "+" or "-" to raise or lower the volume. One will hear "beep" when the volume reaches maximum.

**Note: when using the transmitter connection, the headphones play, pause, and previous / next track button operation functions are not workable.**

#### Pair and connect the transmitter with the headphones again after auto-connection failed.

Option 1:  
A.Put the headphones back on the charging dock, then switch it on again.  
C.Take the headphones away from the charging dock or wear on your head, then the auto-connection will be completed in minutes. If it is not workable, you could try it again as above solution list.

- 07 -

### Option 2:

#### Clear the pair history/Restore factory default settings

**Transmitter:**  
When the transmitter is powered on and the headphone has been taken out, press and hold the "PAIR" button for 8 seconds, you will see the red LED on for 1 seconds, then the blue LED on 1 seconds, Make the transmitter power on again, now the factory re-set is completed.

#### Headphones:

When the headphones are powered on, press and hold both Volume + and Volume - button for 5 seconds. Then switch off the headphones and power on again.

#### After the Factory default settings, you need to make both transmitter and headphones into pairing mode for the re-connection.

**Transmitter Pairing mode:** blue and red LED light flashing alternately.  
When the transmitter is powered on and the headphone has been taken out, press and hold the "Blue LED Pair" button for 2 seconds.

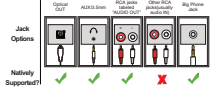
**Headphones Pairing mode:** blue and red led light flashing alternately.  
When the headphones is powered on, it will enter into pairing mode automatically.  
When the headphones is powered off, press and hold the multifunction button for 3 seconds.

- 08 -

Auto-connection: keep the transmitter and headphones close to each other and wait. Once connected, the transmitter LED light will turn **SOLID blue**.

#### Use BTH01 with your TV

**Check your TV output options before the set up**  
BTH01 works with optical output, AUX 3.5mm output, and RCA (labeled "Audio OUT") output.



#### TVs with OPTICAL audio out



- 09 -

After turning on BTH01 and connecting cables, you should be able to hear sound from your headphones. If not,  
• Ensure your TV Speaker is set to "External Speaker",  
• Ensure TV Audio Format is set to "PCM" or "DOLBY/DTS" is off (This is **IMPORTANT**).

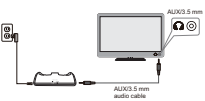


Note: Setting menu may be different depending on different TV brands and model.

To ensure the TV audio out signal is valid, you can contact TV manufacture support with your TV model number and ask  
1) how to set TV audio out to Optical;  
2) how to set Audio Out Format to PCM.

- 10 -

TVs with AUX 3.5mm Audio out

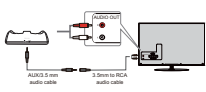


After turning on BTH01 and connecting cables, you should be able to hear sound from your headphones; if not, ensure your TV speaker is set to "Headset".

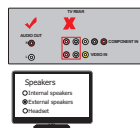


Note: Setting menu may be different depending on different TV brands and model.

TVs with RCA audio out(Red/White ports labeled "AUDIO OUT")



After turning on BTH01 and connecting cables, you should be able to hear sound from your headphones; if not, ensure use TV Red/White ports labeled "AUDIO OUT", other Red/White ports are incorrect (This is **IMPORTANT**).  
• Ensure your TV Speaker is set to "External Speaker".

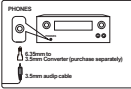


For AUX and RCA out, you can test the signal with the headphone by insert the audio wire directly into the headphone and see whether you can hear sound. If not, and need help for audio signal, you may contact TV manufacture support and ask how to set your TV audio out to the port you are using.

How to set up with AV Receiver

For most AV Receiver (e.g. Yamaha, Denon, etc.), please use the big headphone jack in the front. You need to get a 6.35mm to 3.5mm audio adaptor.

Please use a wired headphone to test the PHONES jack, make sure you can hear sound.



NOTE: Do NOT use the RCA ports on the back of an AV receiver. These are not suitable and will not work or could even permanently damage your BTH01 transmitter!



Use the headphones independently with cellphone

BTH01 headphones can be separately used with cellphone, please follow the step-by-step instruction below:

- 1) Ensure the transmitter is off.
  - 2) Enter the headphones into PAIRING MODE: The BTH01 headphones will enter into pairing mode automatically after it is powered on or disconnected. Turn on: when it is powered off, press and hold the multifunction button for 3 seconds until you see the first sight of the BLUE light.
  - 3) Turn on bluetooth on your smart phone/tablet. Find & select "BTH01" to pair and connect.
- The next time, you want to use your headphones in this way, you will need to select "BTH01" on your smart phone/tablet to reconnect.

**BTH01 Headphones operation instruction when you use with cellphone.**  
Power on: when it is powered off, press and hold the

multifunction button for 3 seconds until you see the first sight of the BLUE light.  
Power off: Press and hold the multifunction button for 3 seconds until you see the first of the RED light.  
To Answer the call: Short press the Multifunction button once.  
To Hang up the call: Hold the Multifunction button once, To reject a call: Hold the Multifunction button for 2 seconds to reject an incoming call.  
Pause/Resume: Press the multi-function button once, Volume Control: Press the volume +/– button once.  
Next / Previous Track: Press and hold the volume + / – button for 2 seconds.  
Important Note: when using the transmitter connection, the headphones play, pause, and previous / next track button operation functions are not workable.

Use BTH01 Headphones as a wired headphones

You could also use the BTH01 headphones as a wired headphones with 3.5mm Aux cable.  
Pairing mode: Blue and Red light flashing alternately.  
Second, connect the BTH01 headphones with a audio sources via 3.5mm AUX cable.  
NOTE: The buttons and microphone on your BTH01 headphones will not work when connected as wired headphones.

Tips Adjust Volume on Headphone

Short press "+" or "-" to raise or lower the volume. One will hear "beep" when the volume reaches maximum.

After use

Place headphones on the transmitter/charging dock to recharge. The headphones will switch off automatically in this way.

Pair and connect the transmitter with the headphones again after auto-connection failed.

1. Put the headphones back on the charging dock.
2. Switch off the transmitter with ON/OFF switch button, then switch it on again.
3. Take the headphones away from the charging dock or wear on your head, then the auto-connection will be completed in minutes. If it is not workable, you could try it again as above solution later.

The sound is cut off

This is due to signal interference with the transmitter or low battery. Adjust the transmitter position to allow for a good connection between the transmitter and the headphones, and charge the headphones sufficiently.

The Headphones is already connected to the transmitter, No sound from the Headphones while watching TV.

- 1) Please ensure your TV audio is set to "External Speaker"
- 2) If you select Optical audio input, please ensure:  
a) Ensure your TV audio format is set to "PCM", the transmitter can decode PCM, but can't decode Dolby/DTS.  
b) Ensure the 3.5mm audio cable is NOT plugged in, or the

transmitter will prioritize the AUX input.

- 3) If you select AUX audio input, please ensure the transmitter is connected to the correct analog audio port on the audio source—Plug in a pair of wired headphones/earbuds into your audio source' audio output to check if it works.

Headphone charging

When headphone battery is low, headphone indicator will flash RED. You will also hear an "beep" from headphone once every 60 seconds. This means it's time to place headphone on the transmitter/charging dock for charging. When headphone are properly seated on the transmitter/charging dock, the CHARGE indicator will light up **Red**. This means headphones are recharging properly. If headphone are not properly placed, the CHARGE indicator will not light up. Once the charging is complete, the **Red** CHARGE LED on transmitter/charging dock will turn off. There is no need to remove headphone from transmitter/charging dock.

Better reception

BTH01 work range reaches up to 100 feet, it may varies due to the environment. If your headphones are picking up noise or interference, move closer to the transmitter. Even within the work range, there may be some "dead spots" where the RF signal cannot be received. This issue is inherent with RF signals and does not indicate a faulty product. Just slightly move the transmitter and the "dead spot" can be corrected.

Suggested care & Maintenance

- Please power off when not in use or before storing.
- Please keep away from excessive heat and humidity.
- Do not use chemicals or detergents to clean this product.
- Extreme temperatures can shorten lifespan of internal components.

Warranty & Customer Support

For questions, assistance, support, or warranty claims, please contact us with E-mail address as follows: [contact@besign-tech.com](mailto:contact@besign-tech.com)

NOTE: This equipment has been tested and found to comply with the limits for a Class B digital device, pursuant to part 15 of the FCC Rules. These limits are designed to provide reasonable protection against harmful interference in a residential installation. This equipment generates uses and can radiate radio frequency energy and, if not installed and used in accordance with the instructions, may cause harmful interference to radio communications. However, there is no guarantee that interference will not occur in a particular installation. If this equipment does cause harmful interference to radio or television reception, which can be determined by turning the equipment off and on, the user is encouraged to try to correct the interference by one or more of the following measures:

- Reorient or relocate the receiving antenna.

- Increase the separation between the equipment and receiver.
  - Connect the equipment into an outlet on a circuit different from that to which the receiver is connected.
  - Consult the dealer or an experienced radio/TV technician for help.
- Changes or modifications not expressly approved by the party responsible for compliance could void the user's authority to operate the equipment.

FCC Radiation Exposure Statement: The antennas used for this transmitter must be installed to provide a separation distance of at least 20 cm from all persons and must not be co-located for operating in conjunction with any other antenna or transmitter.



Correct Disposal of This Product ( Waste Electrical& Electronic Equipment )(Applicable in countries with separate collection systems)

This Marking shown on the product or its literature, indicate that it should not be disposed with other household wastes at the end of its working life.

To prevent possible harm to the environment or human health from uncontrolled waste disposal, please separate this from other types of wastes and recycle it responsibly to promote the sustainable reuse of material resources. Household user should contact either the retailer where they purchased this product, or their local government office, for details of where and how they can take this item for environmentally safe recycling.

Business users should contact their supplier and check the terms and conditions of the purchase contract. This product should not be mixed with other commercial wastes for disposal.

This device complies with Part 15 of the FCC Rules. Operation is subject to the following two conditions:  
(1) this device may not cause harmful interference, and  
(2) this device must accept any interference received, including interference that may cause undesired operation.

**Product Support:**  
E-mail: [contact@besign-tech.com](mailto:contact@besign-tech.com)

**Know more about us, you could visit our website:**  
[www.besign-tech.com](http://www.besign-tech.com)

