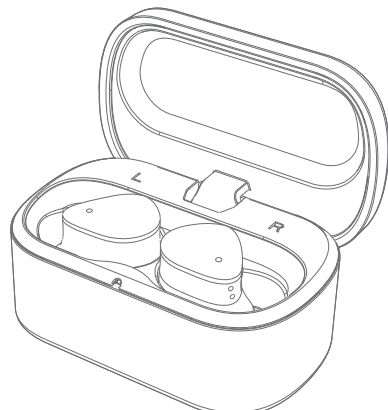


NOBLE

www.nobleaudio.com
https://www.facebook.com/NobleAudio
https://www.instagram.com/nobleaudio/
https://twitter.com/noblebywizard

CE R 217-241235

NOBLE



FoKus Triumph

TRUE WIRELESS STEREO EARPHONE

INSTRUCTION MANUAL

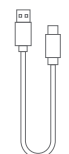
Packing List



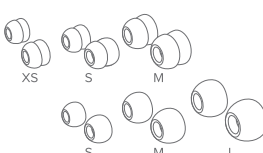
Charging Case x1



Earphones



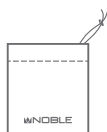
Charging Cable x1



Ear Tips x6



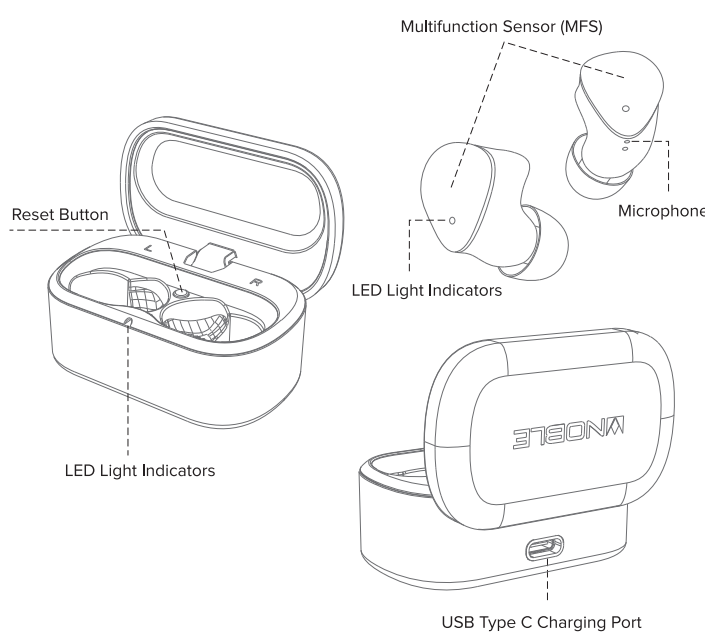
Instruction Manual x1



Storage Bag x1

01

Overview



02

Charging

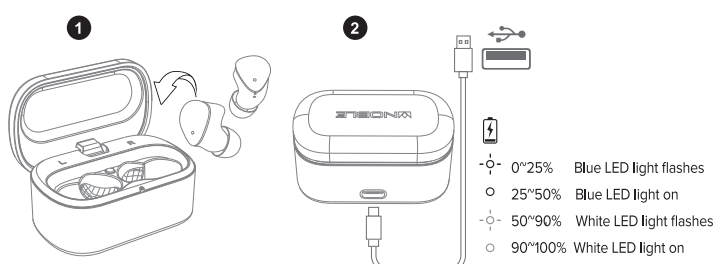
Notes:

Please make sure the earphones and charging case are fully charged prior to first use. The earphones and charging case need to be clean and dry before and during the charging process.

Charging Steps:

- The earphones will power off automatically when put back in the charging case and the charging lid is closed. The LED light will indicate the power capacity when lid is opened or closed.
- Connect the charging case with power source by inserting the USB Type C charging cable.

* Note that the USB Type C cable must have a 10mm male termination.

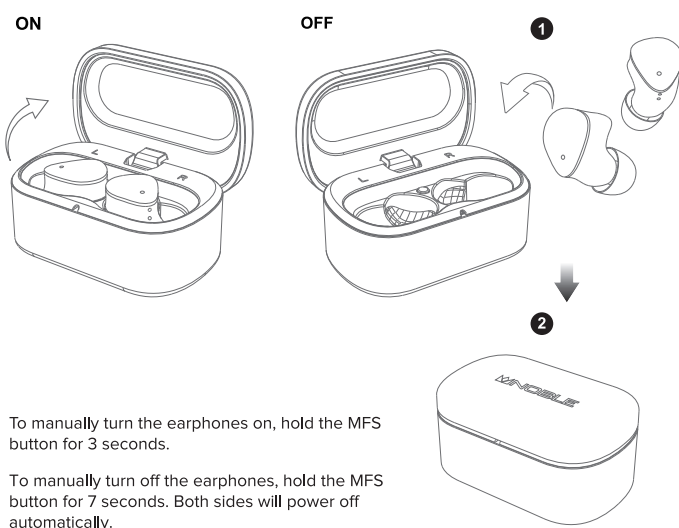


03

Power On / Off

The earphones will power on automatically when charging lid is opened.

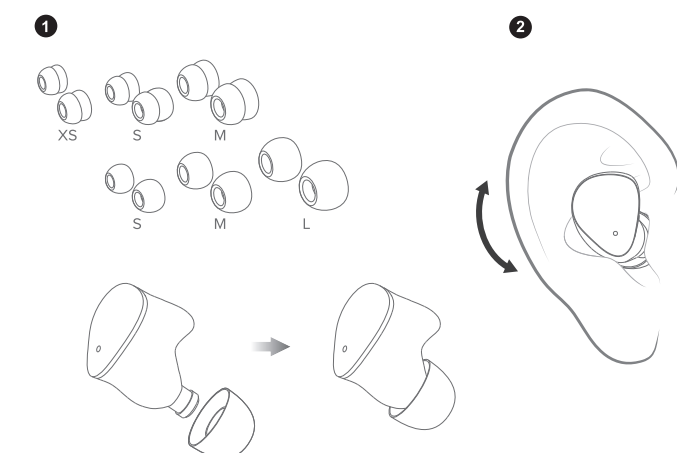
The earphones will power off automatically when put back in the charging case and the charging lid is closed.



04

Fit

- Select an ear tip size suitable for your ear and slide them on to the tip of the earphone.
- Insert the earphones into your ear canals and adjust them to a comfortable fit. Be sure that the earplugs have a secure seal.



05

Pairing/Unpairing Procedure

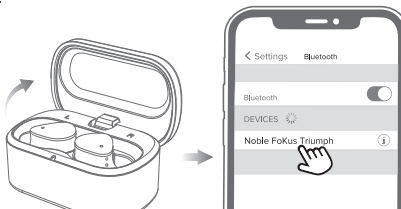
The Noble FoKus Triumph will need to be paired to your device before use. Once paired, they will connect automatically each time they are activated.

Pairing

1. Open the lid of the charging case.

The earphones will power on automatically and enter pairing mode. Blue LED light flashes.

- Enable Bluetooth on your smartphone and search for "Noble FoKus Triumph" in available Bluetooth devices. Once found, select "Noble FoKus Triumph" to initiate pairing. You will hear "connected", now the earphones are ready for use.



Pairing a new device

- Open the lid of your charging case. The earphones will power on automatically and connect to your current device.
- To unpair the earphones from your last connected smartphone by "disconnecting" or deleting "Noble FoKus Triumph" from your smartphone's Bluetooth device list.
- Once disconnected, the earphones will automatically enter pairing mode, with blue and white indicator lights flashing alternately.
- Enable Bluetooth on your new device, and search for "Noble FoKus Triumph" in the available Bluetooth devices. Once found, select "Noble FoKus Triumph" to initiate pairing. You will hear "connected", now the earphones are ready for use.

06

Operation

Play/Pause	Single Click MFS (L/R)
Volume Up+	Triple Click MFS (L)
Volume Down-	Double Click MFS (L)
Previous Track	Double Click MFS (R)
Next Track	Triple Click MFS (R)
Answer Call/Hang Up	Single Click MFS (L/R)
Reject Call	Press the MFS for 2 seconds (L/R)
Voice Assistant function-Siri / Google	Press the MFS for 3 seconds (R)
Ambient mode	Press the MFS for 3 seconds (L)

07

LED Indicator Lights

Usage Scenario	LED Indicator Status
Power On	Blue LED light flashes for one second
Power Off	Blue LED light flashes for one second
Pairing	Blue LED light flashes
Pairing succeeds	Blue LED light flashes every 7 seconds
Playing music or on calling	LED light off
Low Power	Blue LED light flashes twice every 8 seconds
When put earphones in the charger case	Blue LED light on
Earphones are sitted in the charger case	LED light off
Case is charging	0-25% Blue LED light flashes 25-50% Blue LED light on 50-90% White LED light flashes 90-100% White LED light on
Case full charged	White LED light on

Single Pairing mode: Put one side back in the charging case and the other earphone will work independently.

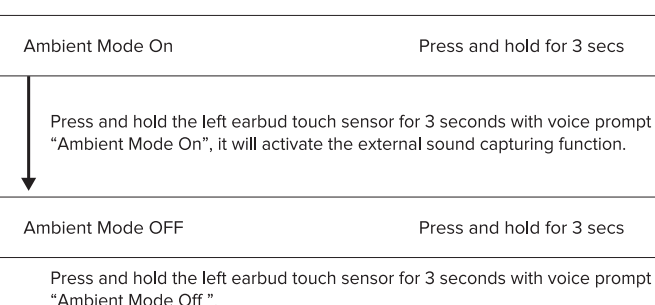
One side will continue working even when the other side is powered off.

Pairing after being taken out of range: The earphones will automatically pair to the smartphone within 3 minutes if they are close to the smartphone again after being taken out of range. If they are not brought within range within three minutes, the headphones will automatically power off.

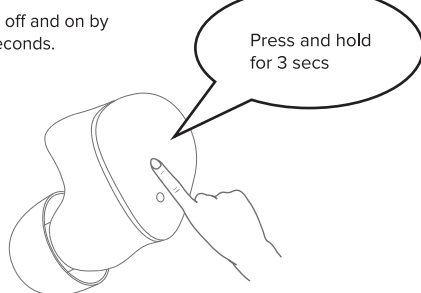
08

Ambient Mode

In standby mode or when playing music



The ambient mode can be turned off and on by pressing the LEFT earbud for 3 seconds.



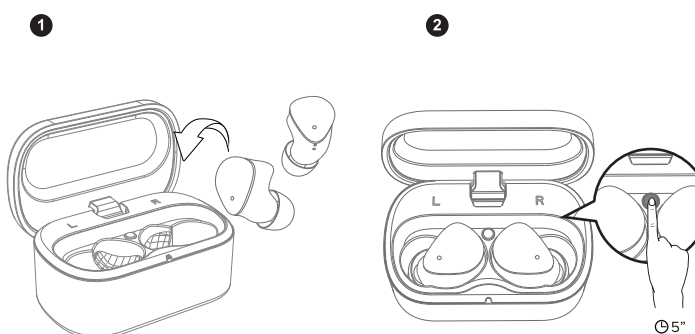
09

Reset Procedure

* If the earphones cannot pair to each other or to your bluetooth devices, please reset them.

- Put both earphones into the charging case
- Hold the reset button for 5 seconds until the blue LED lights on both earphones flash quickly. All previously paired devices will be cleared. The reset process is completed.

In the case that only one earphone is accidentally reset, both earphones will need to be reset to function as a pair again.



10

Specification

Product Model	Noble FoKus Triumph
Bluetooth Version	V 5.3
Bluetooth Profile	A2DP、AVRCP、HFP、HSP
Audio Codec	SBC、AAC、Aptx Adaptive、Qcs
Driver size	Φ6.5mm 20Ω±4.5(15%)
Frequency response	20HZ ~ 20KHZ
Connection Distance	≥10m
Earphone Battery Capacity	45mAh
Charging Case Battery Capacity	400mAh
Play time	7H (50% volume), Talk time: 4H
Charging time	Earbuds: 1.5 hours; charger case: 2 hours
Charging Port	Type C
Power input	5V = 1A

11

Declarations and Warnings

Disconnect previous devices before pairing a new device.

WARNING!

Long-term exposure to high noise volumes may cause permanent hearing loss.

Do not use the Noble FoKus Triumph earphones in locations prohibiting the use of electronic equipment.

Consult your physician prior to using your Noble FoKus Triumph earphones if you have a pacemaker or other electrical medical devices.

This package contains small parts, which may pose a hazard to small children.

Do not disassemble the Noble FoKus Triumph as it contains lithium batteries, and disassembly could result in electric shock or fire or serious injury.

Any disassembly of the Noble FoKus Triumph, or attempt to replace or repair the Noble FoKus Triumph by an unauthorized person, will void the Noble FoKus Triumph warranty.

This product is not designed for use in water or wet environments. Keep product away from water and liquids.

Failure to do so will void any warranty and may cause permanent damage to the product.

12

FCC STATEMENT

This device complies with Part 15 of the FCC Rules. Operation is subject to the following two conditions:

- (1) This device may not cause harmful interference, and
- (2) This device must accept any interference received, including interference that may cause undesired operation.

Warning: Changes or modifications not expressly approved by the party responsible for compliance could void the user's authority to operate the equipment.

NOTE: This equipment has been tested and found to comply with the limits for a Class B digital device, pursuant to Part 15 of the FCC Rules. These limits are designed to provide reasonable protection against harmful interference in a residential installation. This equipment generates uses and can radiate radio frequency energy and, if not installed and used in accordance with the instructions, may cause harmful interference to radio communications. However, there is no guarantee that interference will not occur in a particular installation. If this equipment does cause harmful interference to radio or television reception, which can be determined by turning the equipment off and on, the user is encouraged to try to correct the interference by one or more of the following measures:

Reorient or relocate the receiving antenna.

Increase the separation between the equipment and receiver.

Connect the equipment into an outlet on a circuit different from that to which the receiver is connected.

Consult the dealer or an experienced radio/TV technician for help.

13