

# **Test setup photo of EUT**

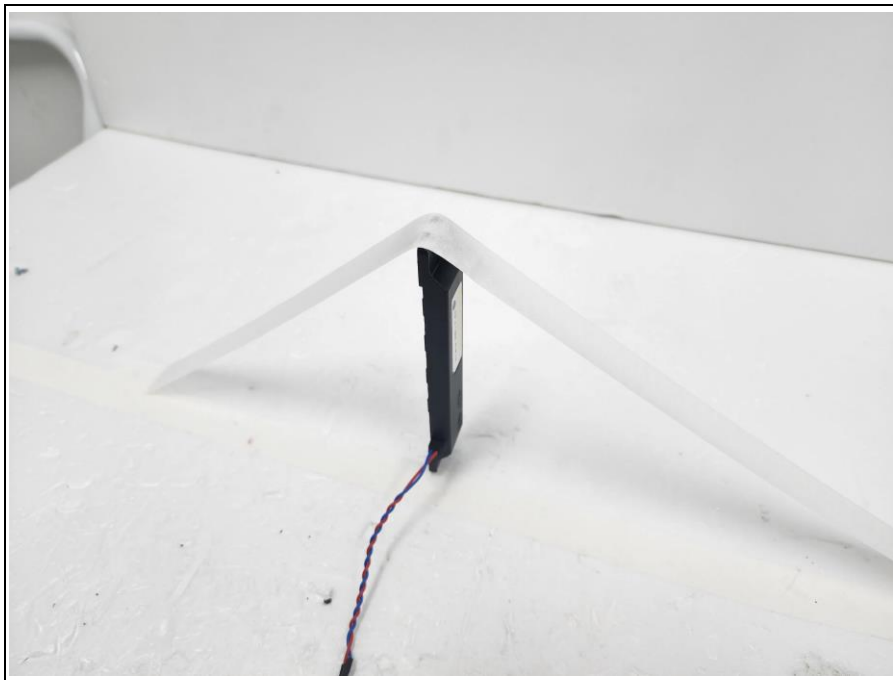
## 1. Orthogonal plane of EUT

- The testing was set in the three orthogonal planes and measured for each position (X, Y, Z).

### X-axis

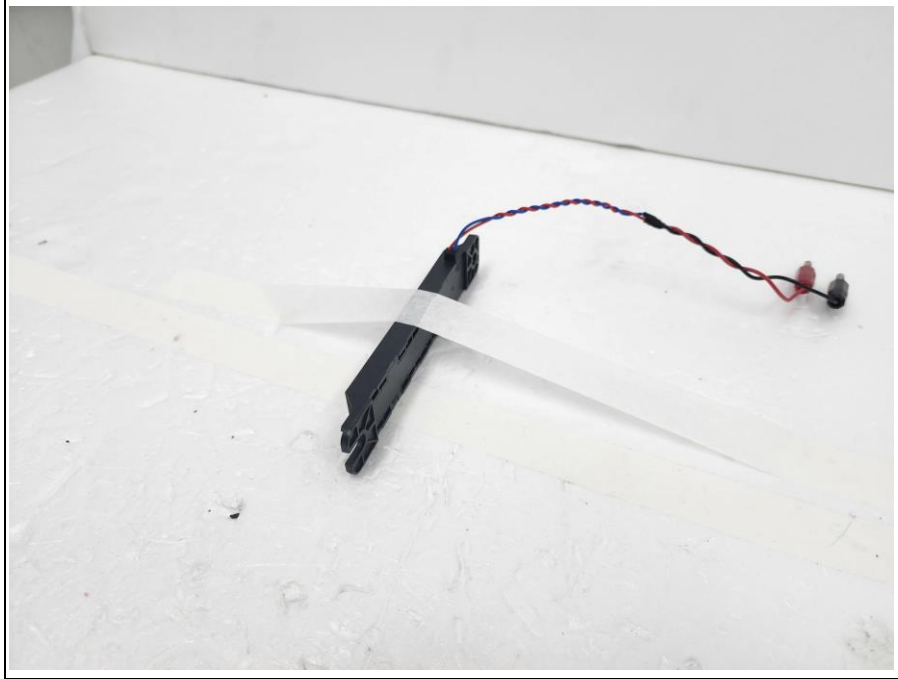


### Y-axis



**Model name: IBU-4E14**

**Z-axis**

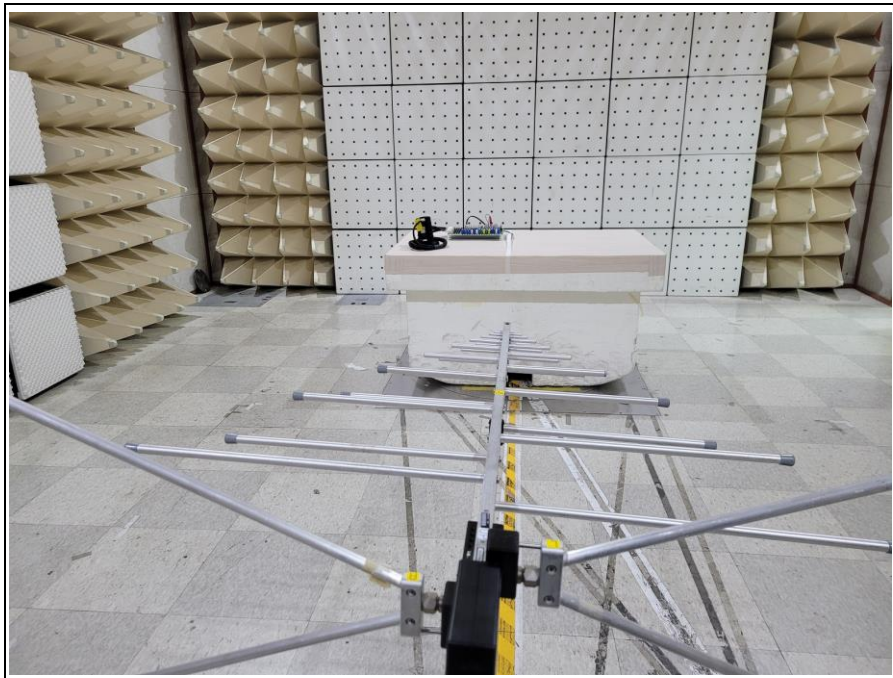


**Model name: IBU-4E14**

## **2. Photo of Radiated Spurious Emission Test (9 kHz ~ 30 MHz)**



## **3. Photo of Radiated Spurious Emission Test (30 MHz ~ 1 000 MHz)**



**Model name: IBU-4E14**