

US Tech Test Report:
FCC ID:
Test Report Number:
Issue Date:
Customer:
Model:

FCC Part 95
KE3-30035901
23-0066
May 11, 2023
Radio Systems Corporation
RFA-621

INTERNAL PHOTOGRAPHS

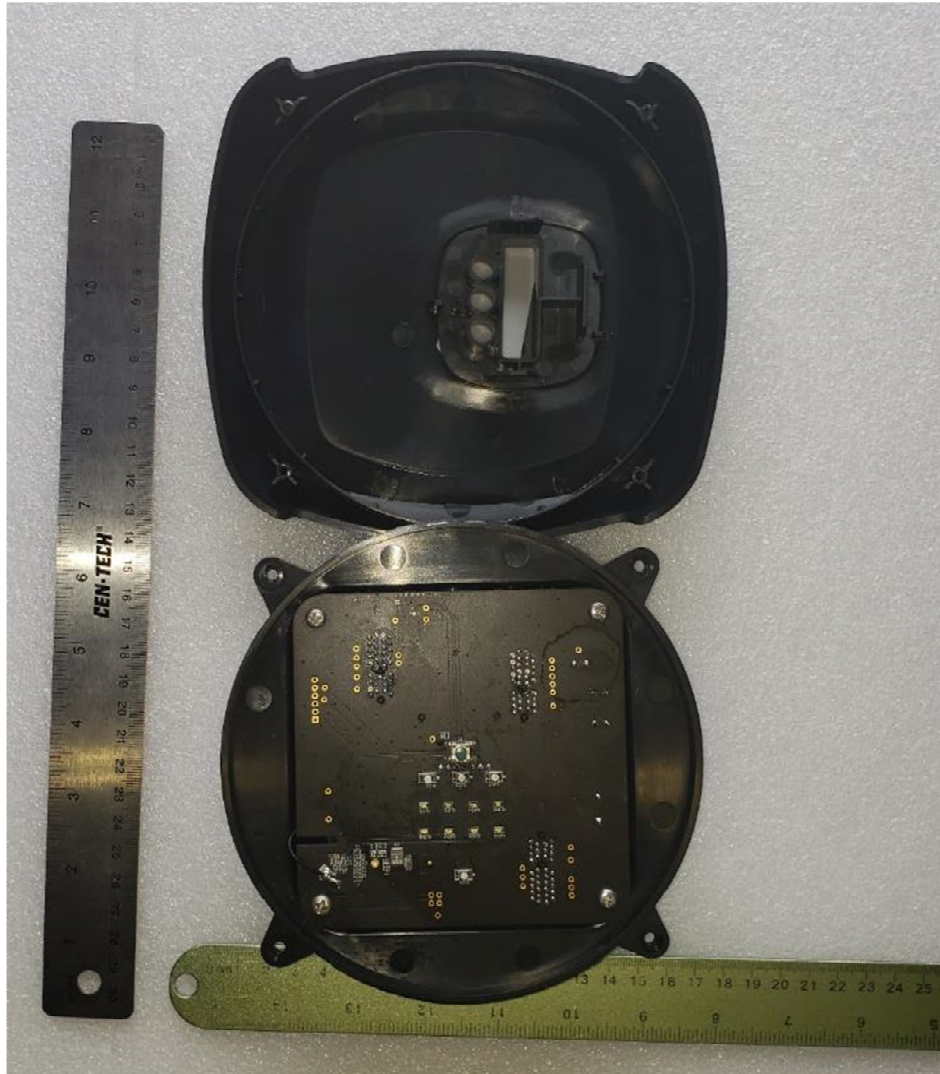


Figure 1. Top Cover Removed

US Tech Test Report:
FCC ID:
Test Report Number:
Issue Date:
Customer:
Model:

FCC Part 95
KE3-30035901
23-0066
May 11, 2023
Radio Systems Corporation
RFA-621

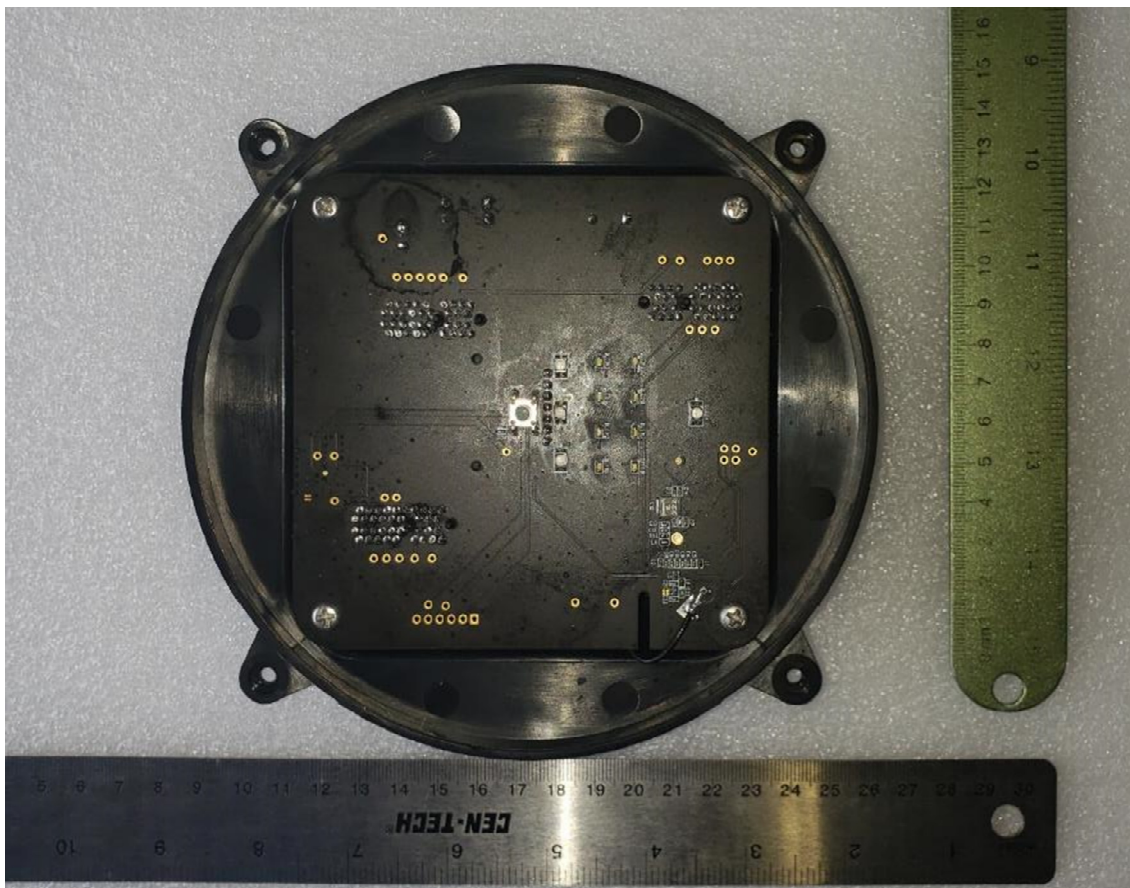


Figure 2. Back of Main PCB

US Tech Test Report:
FCC ID:
Test Report Number:
Issue Date:
Customer:
Model:

FCC Part 95
KE3-30035901
23-0066
May 11, 2023
Radio Systems Corporation
RFA-621

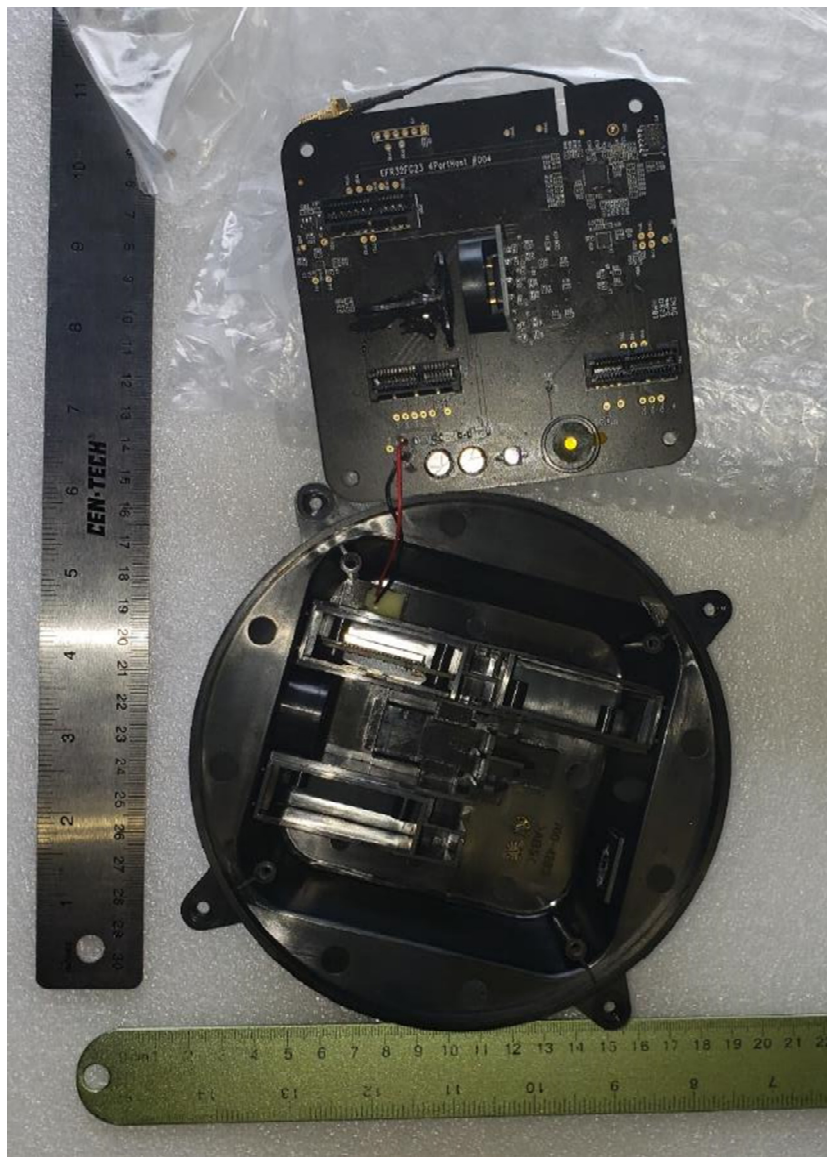


Figure 3. Main PCB Removed Form Enclosure

US Tech Test Report:
FCC ID:
Test Report Number:
Issue Date:
Customer:
Model:

FCC Part 95
KE3-30035901
23-0066
May 11, 2023
Radio Systems Corporation
RFA-621



Figure 4. Front of Main PCB

US Tech Test Report:
FCC ID:
Test Report Number:
Issue Date:
Customer:
Model:

FCC Part 95
KE3-30035901
23-0066
May 11, 2023
Radio Systems Corporation
RFA-621



Figure 5. Wi-Fi Module (Pre-Certified) Enclosure



Figure 6. Wi-Fi Module (Pre-Certified) Removed from Enclosure

US Tech Test Report:
FCC ID:
Test Report Number:
Issue Date:
Customer:
Model:

FCC Part 95
KE3-30035901
23-0066
May 11, 2023
Radio Systems Corporation
RFA-621



Figure 7. Antenna Enclosure Opened

US Tech Test Report:
FCC ID:
Test Report Number:
Issue Date:
Customer:
Model:

FCC Part 95
KE3-30035901
23-0066
May 11, 2023
Radio Systems Corporation
RFA-621

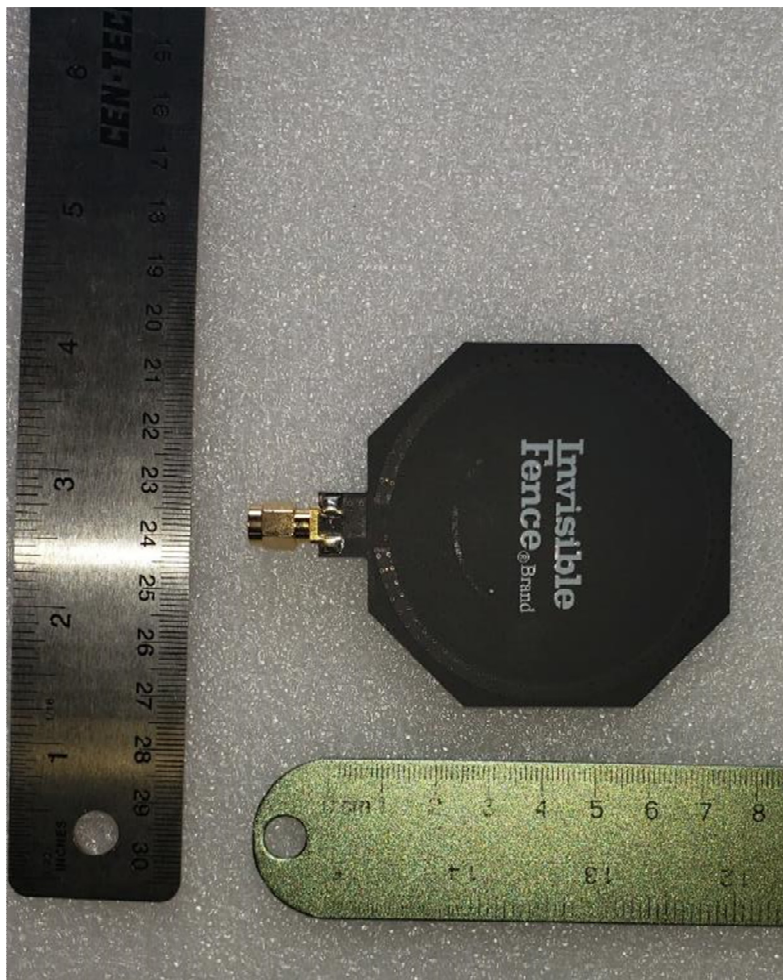


Figure 8. Antenna Front

US Tech Test Report:
FCC ID:
Test Report Number:
Issue Date:
Customer:
Model:

FCC Part 95
KE3-30035901
23-0066
May 11, 2023
Radio Systems Corporation
RFA-621

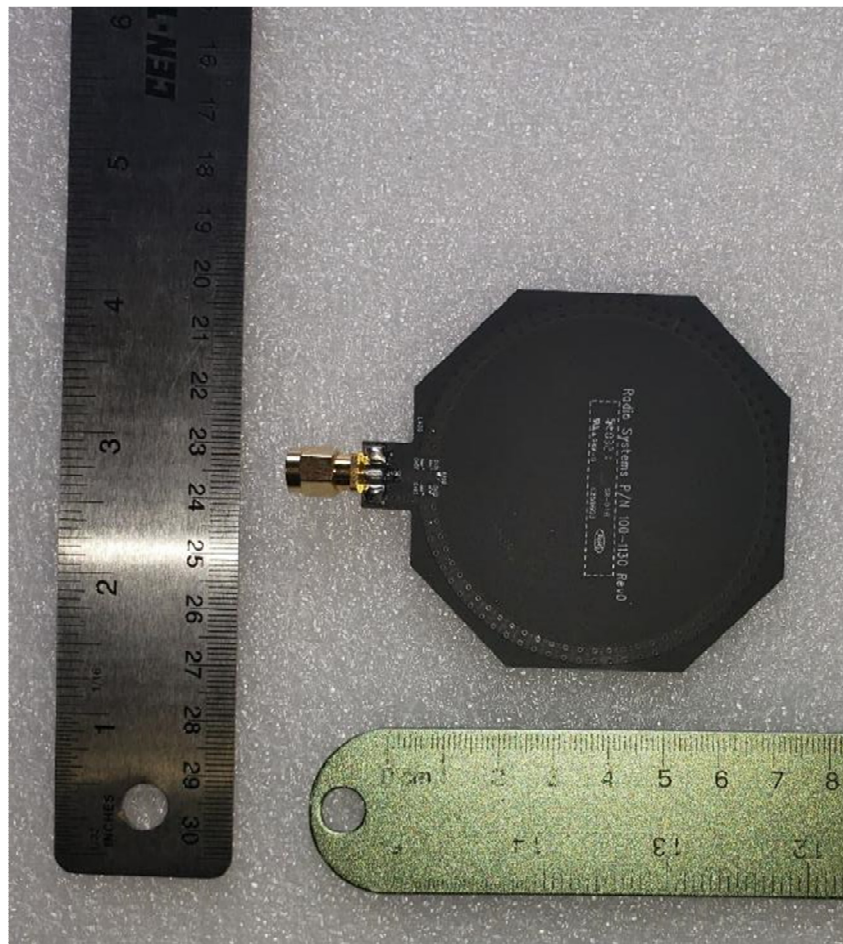


Figure 9. Antenna Back