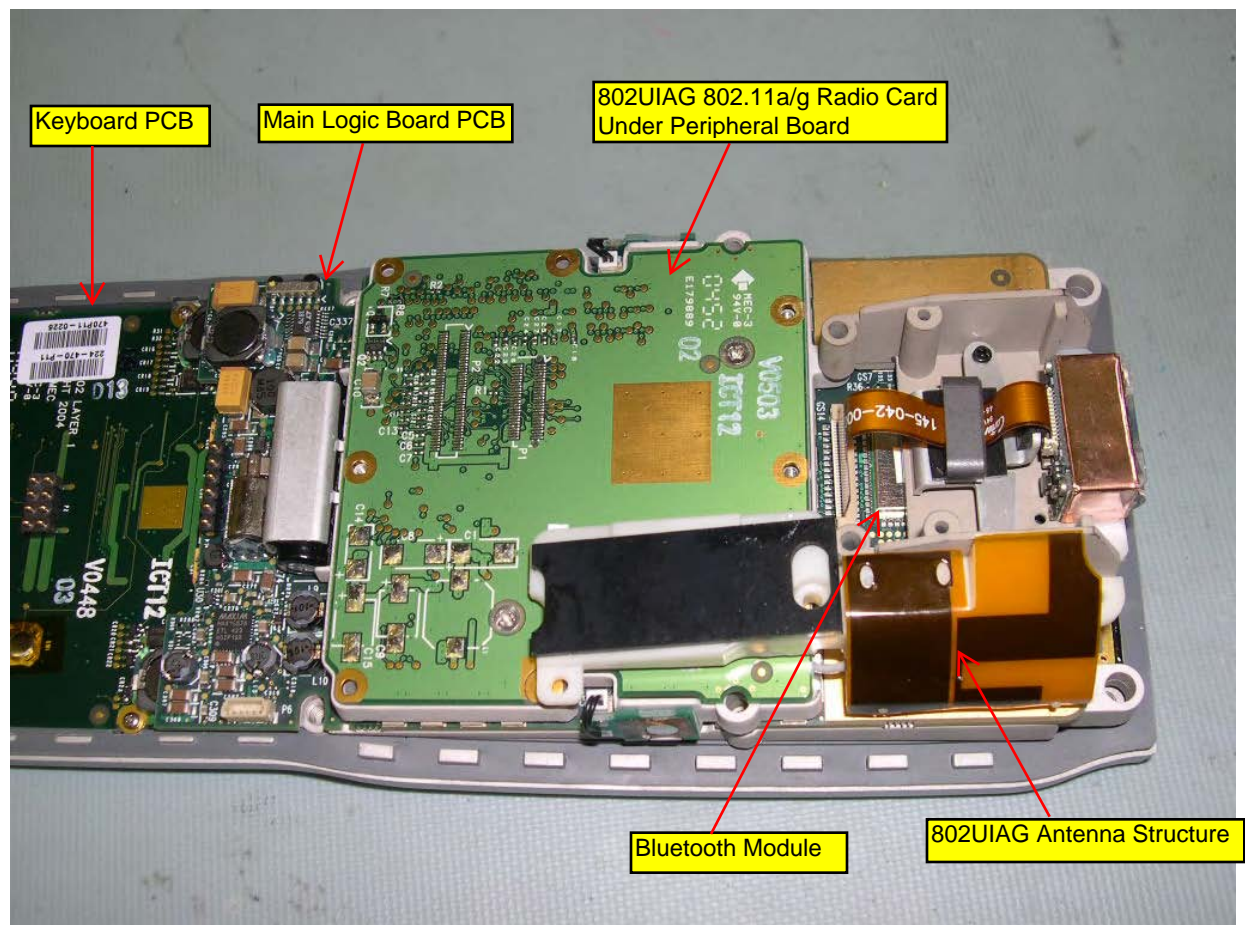


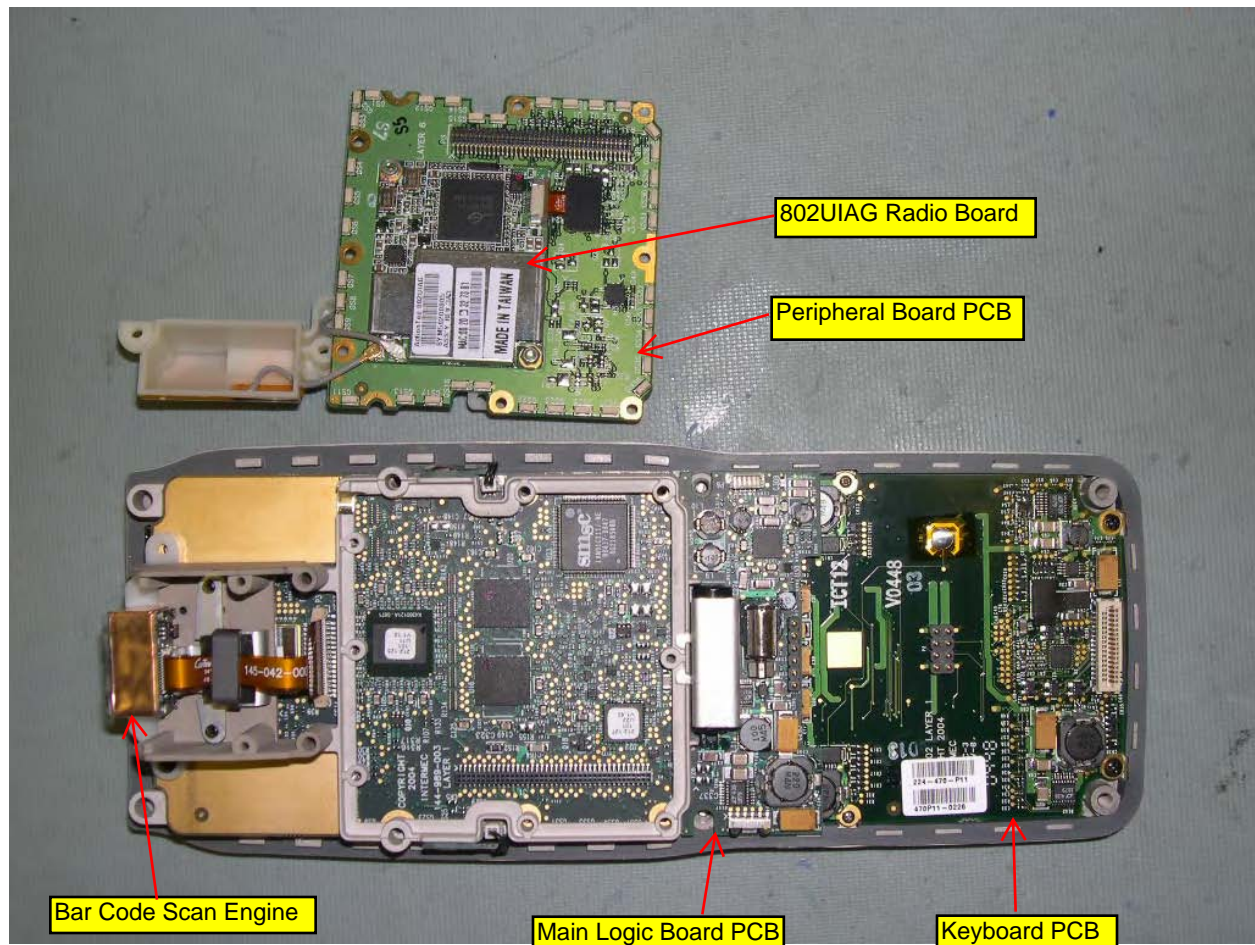
CK60 Internal Photos



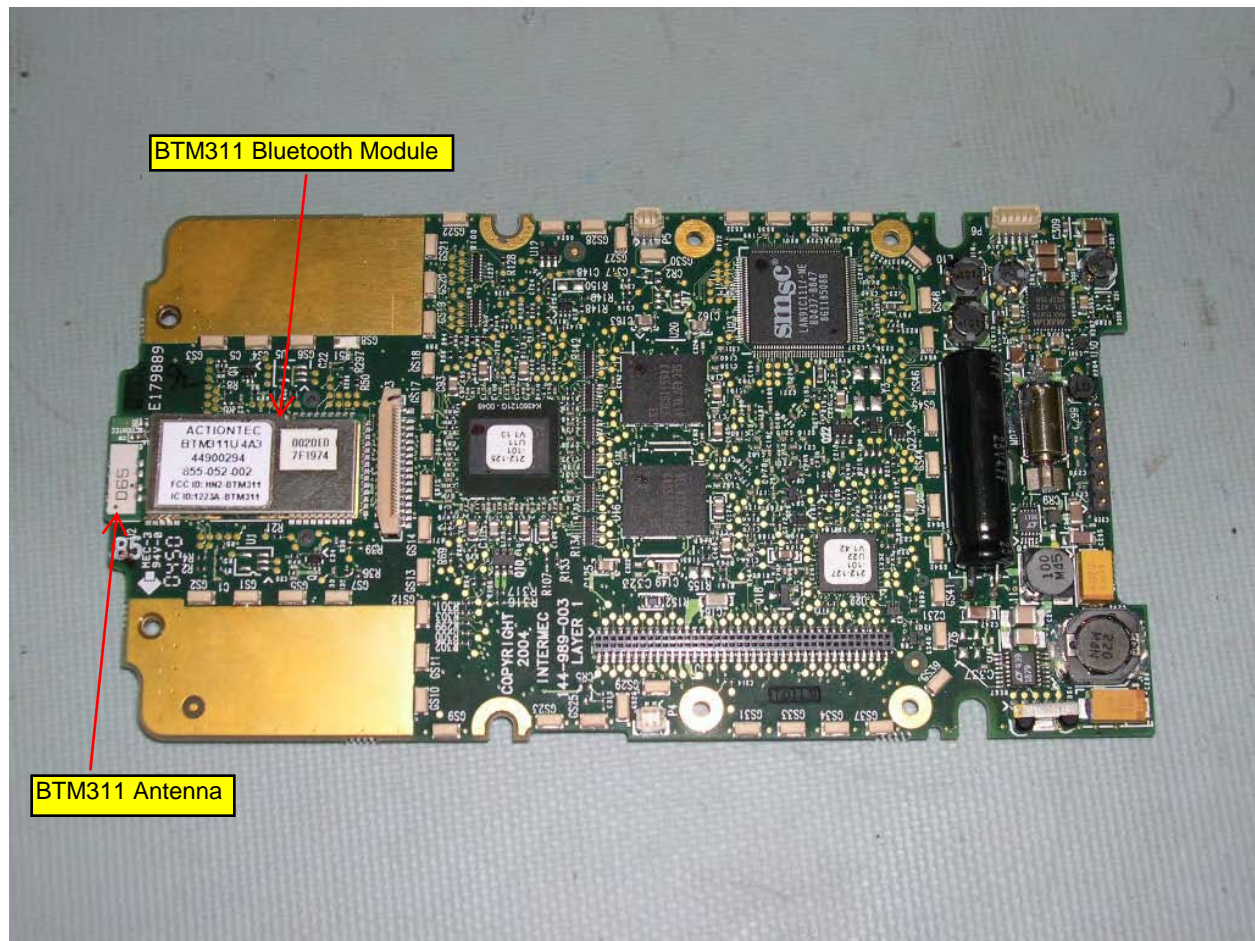
CK60 Unit Disassembled



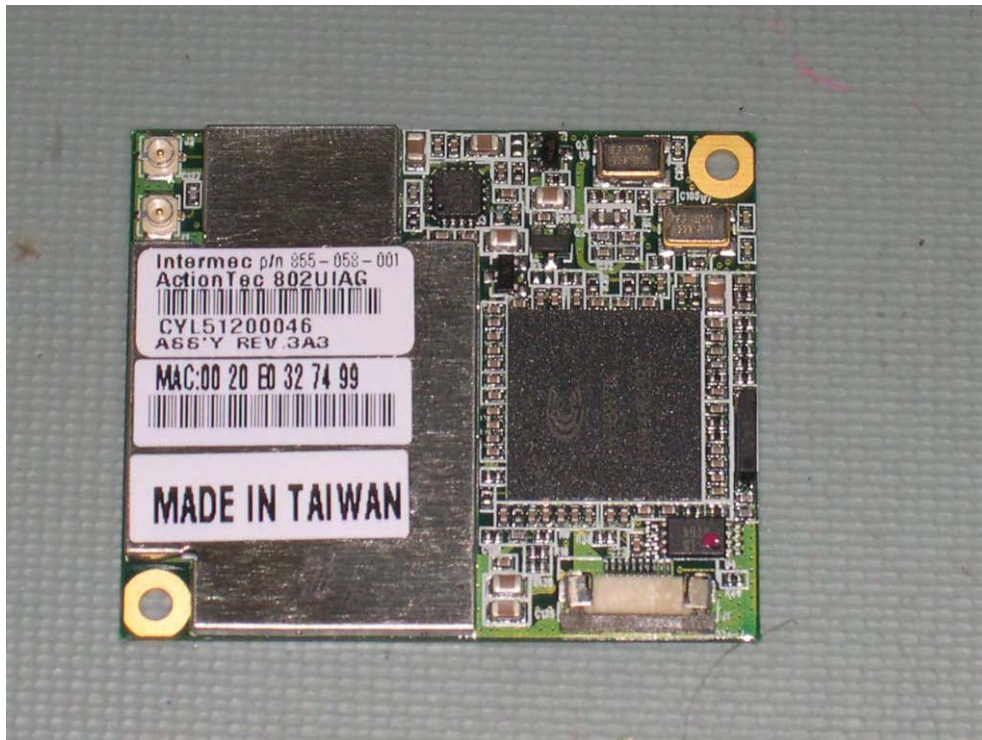
Front Section of CK60



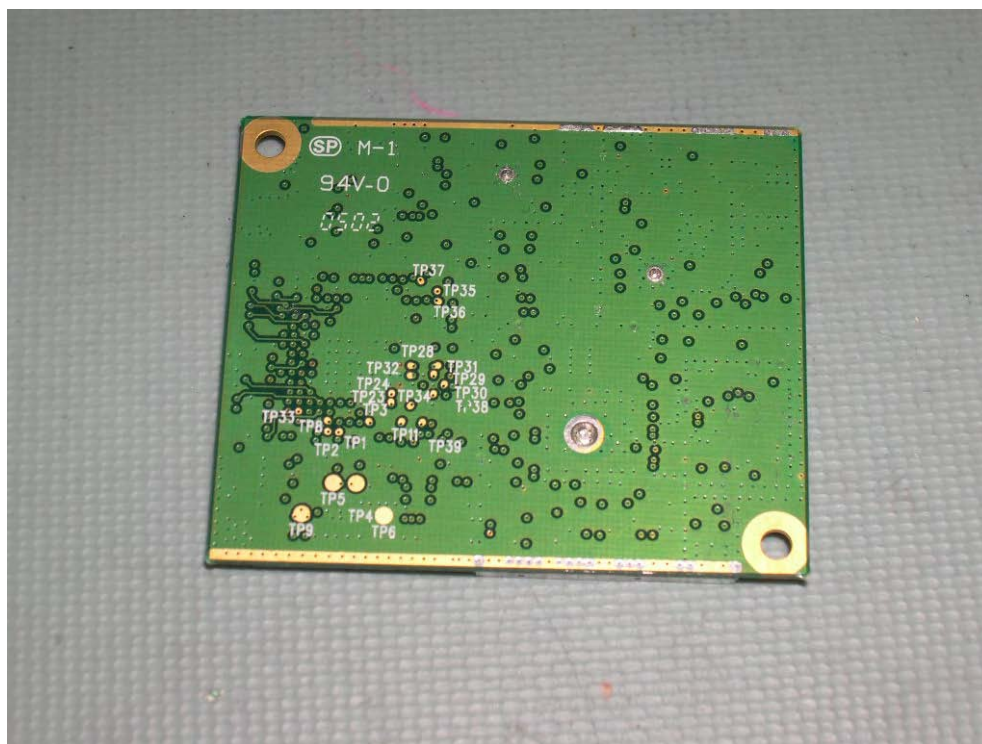
Front Section with 802.11a/g Radio Removed



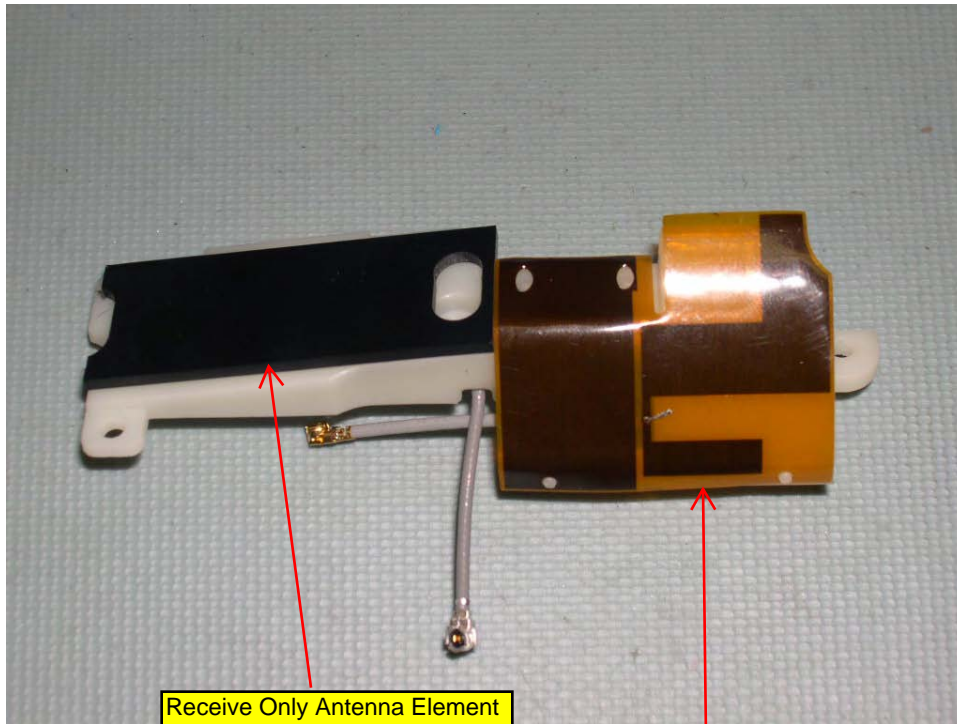
CK60 Main Logic Board (MLB) Showing Location of Bluetooth Module



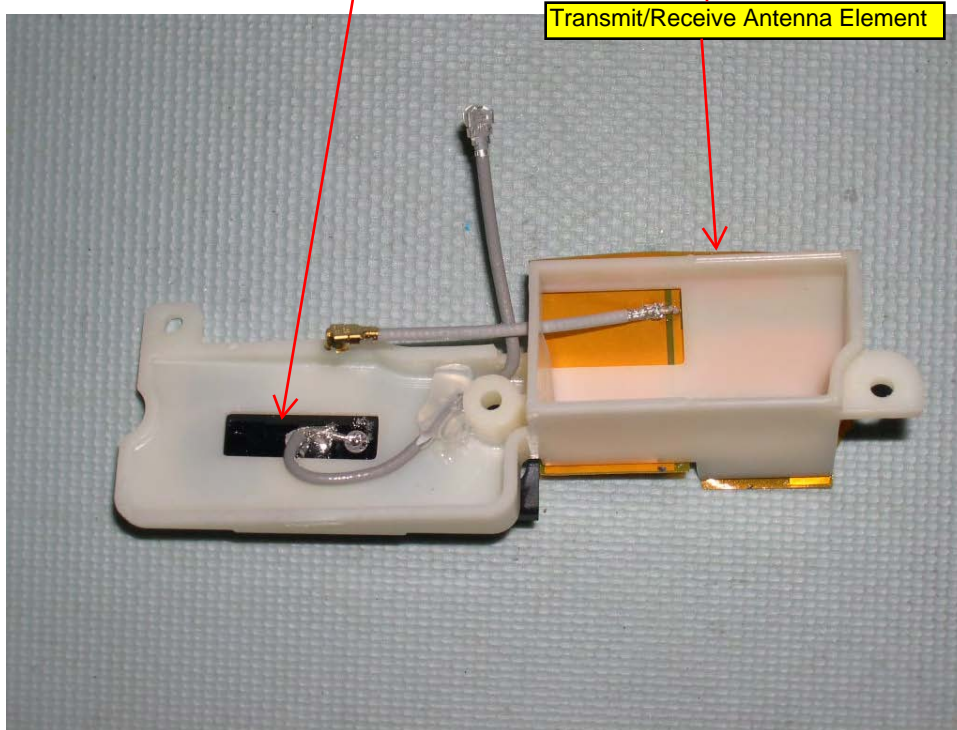
802UIAG Radio Card Front



802UIAG Radio Card Back



802UIAG Antennas Top



802UIAG Antennas Bottom

802UIAG Radio Photos



Top of Radio Card



Back of Radio Card



Top of Radio Card with Shield Removed