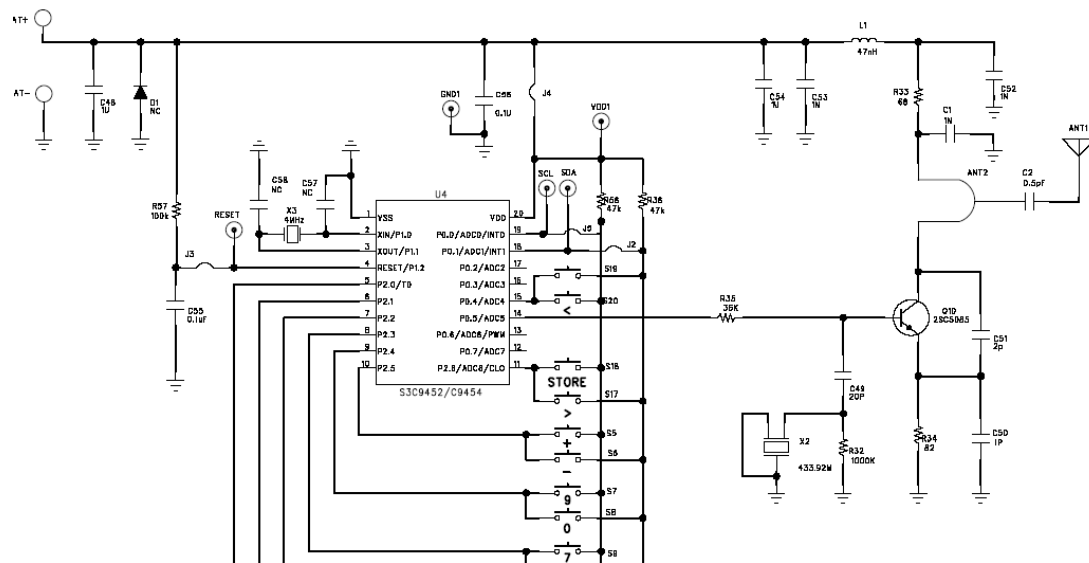


15-1892 Technical Description

15-1892 is an UHF remote control TV receiver, which can be divided into a few parts:

Remote Control

Brief Description of each section:



The whole circuitry operates with a CR2032 battery. The remote control consisted of a S3C9454 MCU and an amplifier Q10. The data is being generated by the MCU, then directly modulate onto the 433.92MHz carrier(X2 resonator) and at last amplified by Q10 before sending out.

Entering Remote Control Test Mode

Please follow the procedure below to use test mode:

1.



Diagram 1. Holding the gain “+” and “-“ button.

2.

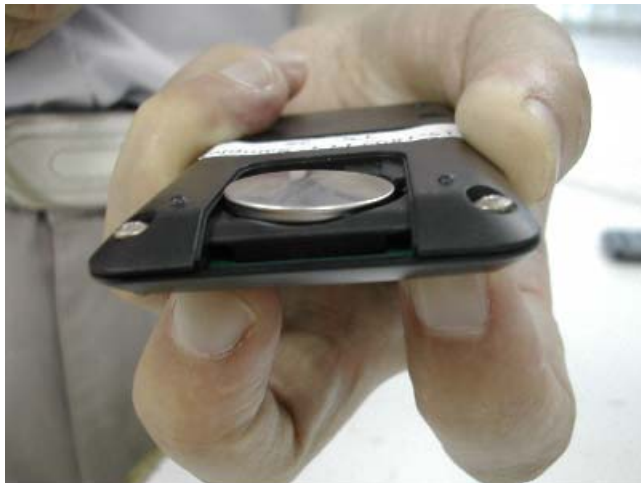


Diagram 2. While holding the two keys, insert the CR2032 battery.

3. Close the battery door and the 433.92MHz carrier is in continuous transmitting mode.