

EXHIBIT 9**Internal Photographs**

(Pursuant to FCC Part 2.1033(b)(7) and 2.1033(c)(12))

The following photographs are attached.

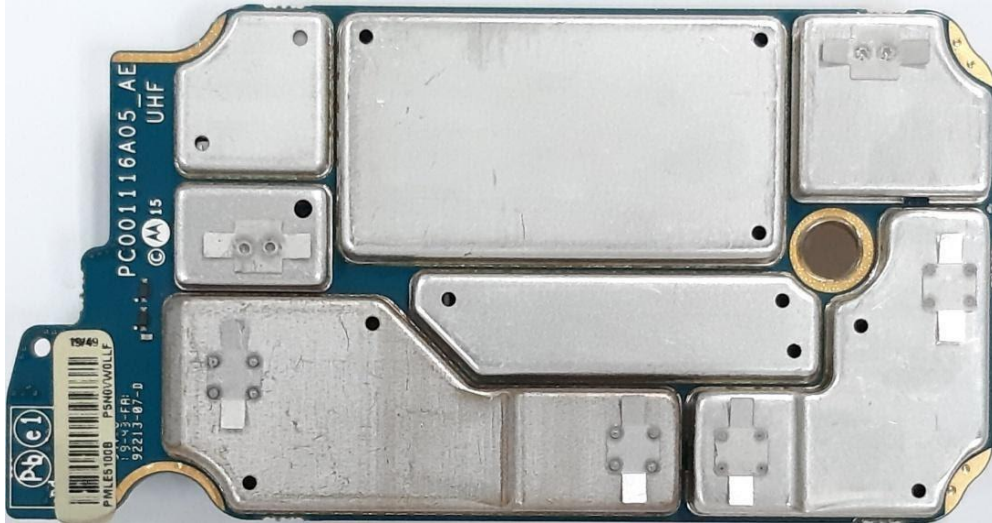
Exhibit

- | | |
|---|----|
| 1. RF board <u>with</u> Shields (Top) (APX6000/APX5000/APX6000XE/APX6000Li/SRX2200) | 9A |
| 2. RF board <u>without</u> Shields (Top) (APX6000/APX5000/APX6000XE/APX6000Li/SRX2200) | 9B |
| 3. RF board <u>with</u> Shields (Bottom) (APX6000/APX5000/APX6000XE/APX6000Li/SRX2200) | 9C |
| 4. RF board <u>without</u> Shields (Bottom) (APX6000/APX5000/APX6000XE/APX6000Li/SRX2200) | 9D |
| 5. Expansion board <u>with</u> shields (Top) (APX6000/APX5000/APX6000XE/APX6000Li/SRX2200) | 9E |
| 6. Expansion board <u>without</u> shields (Top) (APX6000/APX5000/APX6000XE/APX6000Li/SRX2200) | 9F |
| 7. Expansion board <u>with</u> shields (Bottom) (APX6000/APX5000/APX6000XE/APX6000Li/SRX2200) | 9G |
| 8. Expansion board <u>without</u> shields (Bottom) (APX6000/APX5000/APX6000XE/APX6000Li/SRX2200) | 9H |
| 9. Vocon board <u>with</u> shields (Top) (APX6000/APX5000/APX6000XE/APX6000Li/SRX2200) | 9I |
| 10. Vocon board <u>without</u> shields (Top) (APX6000/APX5000/APX6000XE/APX6000Li/SRX2200) | 9J |
| 11. Vocon board <u>with</u> shields (Bottom) (APX6000/APX5000/APX6000XE/APX6000Li/SRX2200) | 9K |
| 12. Vocon board <u>without</u> shields (Bottom) (APX6000/APX5000/APX6000XE/APX6000Li/SRX2200) | 9L |

| | |
|---|-----|
| 13. RF and Vocon boards <u>with</u> chassis and housing (APX6000/APX6000Li/APX5000 Model 1.5) (Front side) | 9M |
| 14. Expansion board <u>with</u> chassis and housing (APX6000/APX6000Li/APX5000 Model 1.5) (Back side) | 9N |
| 15. RF and Vocon boards <u>with</u> chassis and housing (APX6000/APX6000Li/APX5000 Model 2.5) (Front side) | 9O |
| 16. Expansion board <u>with</u> chassis and housing (APX6000/APX6000Li/APX5000 Model 2.5) (Back side) | 9P |
| 17. RF and Vocon boards <u>with</u> chassis and housing (APX6000/ APX6000Li /APX5000 Model 3.5) (Front side) | 9Q |
| 18. Expansion board <u>with</u> chassis and housing (APX6000/ APX6000Li /APX5000 Model 3.5) (Back side) | 9R |
| 19. RF and Vocon boards <u>with</u> chassis and housing of SRX2200 Model 1.5 (Front side) | 9S |
| 20. Expansion board <u>with</u> chassis and housing of SRX2200 Model 1.5 (Back side) | 9T |
| 21. RF and Vocon boards <u>with</u> chassis and housing of SRX2200 Model 3.5 (Front side) | 9U |
| 22. Expansion board <u>with</u> chassis and housing of SRX2200 Model 3.5 (Back side) | 9V |
| 23. RF and Vocon boards <u>with</u> chassis and housing of APX6000XE Model 1.5 (Front side) | 9W |
| 24. Expansion board <u>with</u> chassis and housing of APX6000XE Model 1.5 (Back side) | 9X |
| 25. RF and Vocon boards <u>with</u> chassis and housing of APX6000XE Model 2.5 (Front side) | 9Y |
| 26. Expansion board <u>with</u> chassis and housing of APX6000XE Model 2.5 (Back side) | 9Z |
| 27. RF and Vocon boards <u>with</u> chassis and housing of APX6000XE Model 3.5 (Front side) | 9AA |
| 28. Expansion board <u>with</u> chassis and housing of APX6000XE Model 3.5 (Back side) | 9AB |
| 29. Exploded view of APX6000/APX6000Li/APX5000/SRX2200 Model 1.5 | 9AC |

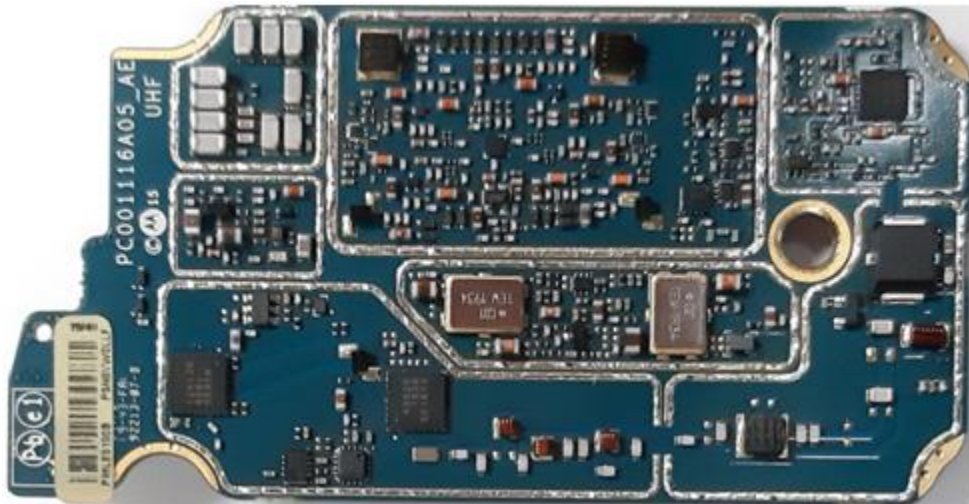
| | |
|---|-----|
| 30. Exploded view of APX6000/APX6000Li/APX5000 Model 2.5 | 9AD |
| 31. Exploded view of APX6000/APX6000Li/APX5000/SRX2200 Model 3.5 | 9AE |
| 32. Exploded view of APX6000XE Model 1.5 | 9AF |
| 33. Exploded view of APX6000XE Model 2.5 | 9AG |
| 34. Exploded view of APX6000XE Model 3.5 | 9AH |

Exhibits 9A



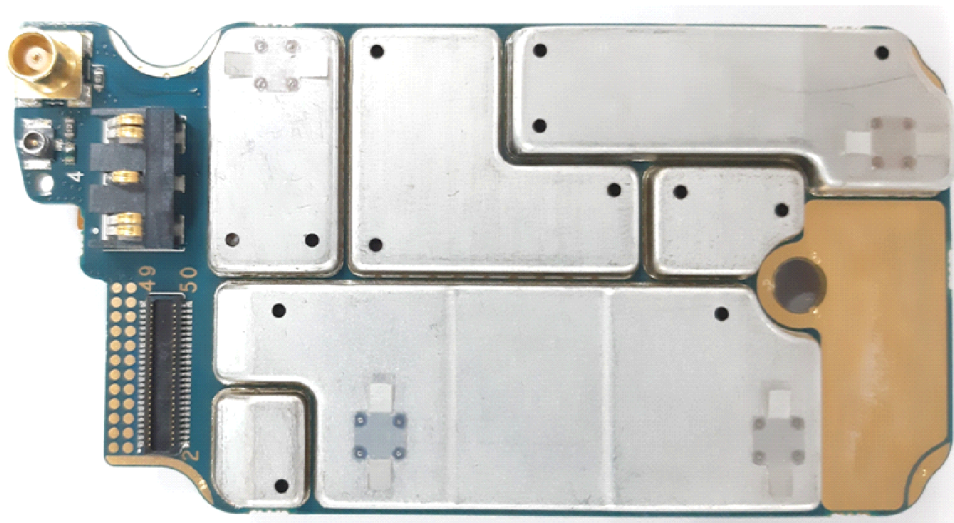
RF board with Shields (Top)
(APX6000/APX5000/APX6000XE/APX6000Li/SRX2200)

Exhibit 9B



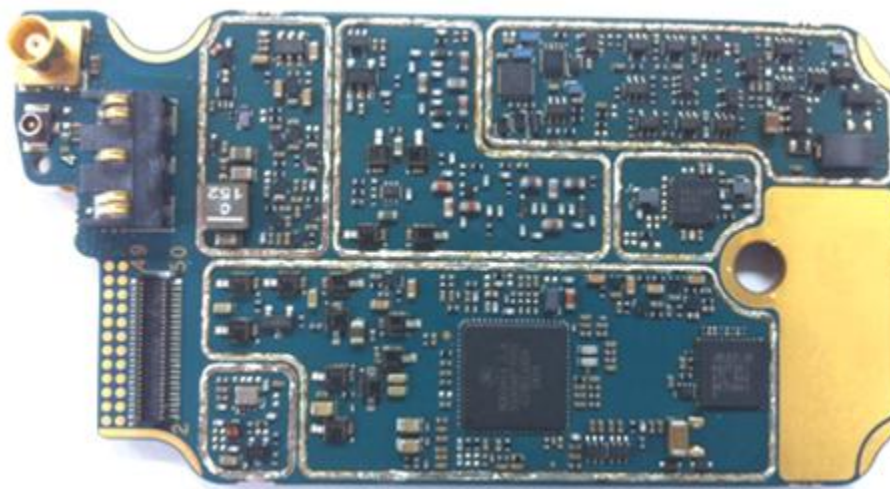
RF board without Shields (Top)
(APX6000/APX5000/APX6000XE/APX6000Li/SRX2200)

Exhibit 9C



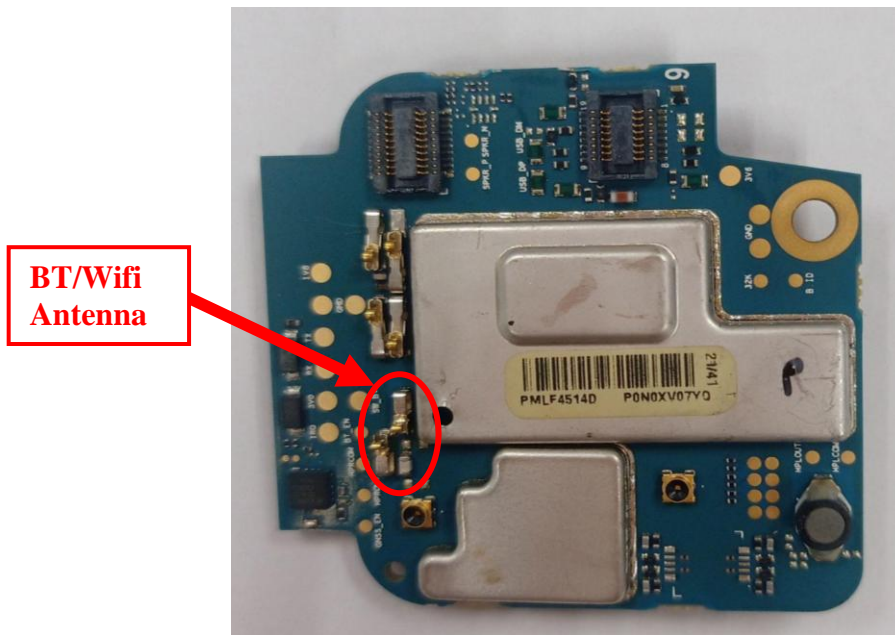
RF board with Shields (Bottom)
(APX6000/APX5000/APX6000XE/APX6000Li/SRX2200)

Exhibit 9D



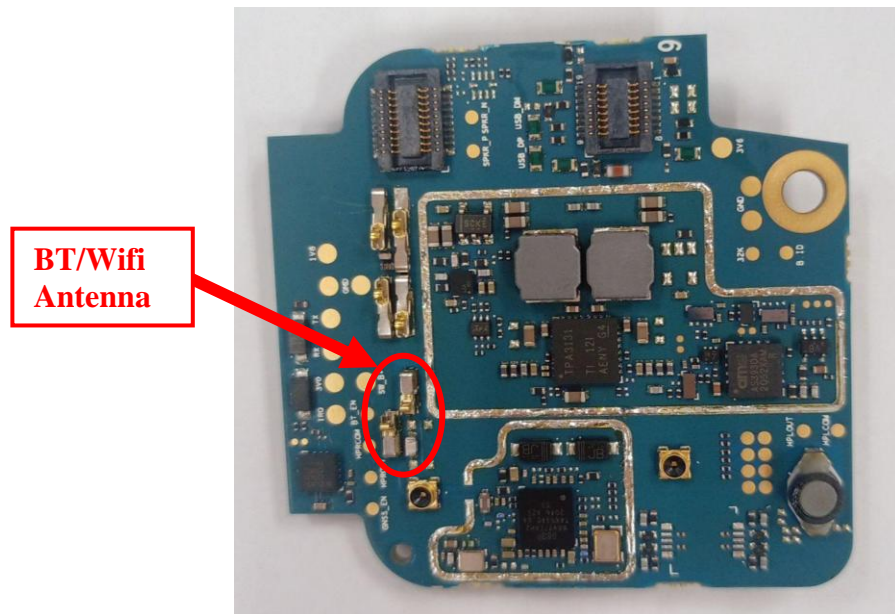
RF board without Shields (Bottom)
(APX6000/APX5000/APX6000XE/APX6000Li/SRX2200)

Exhibit 9E



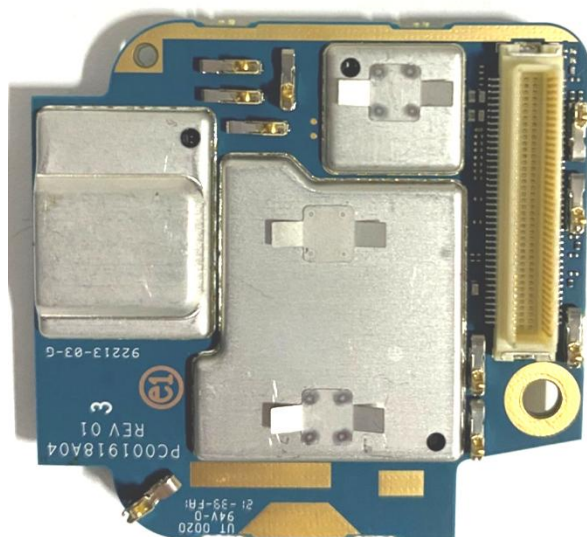
Expansion board with shields (Top)
(APX6000/APX5000/APX6000XE/APX6000Li/SRX2200)

Exhibit 9F



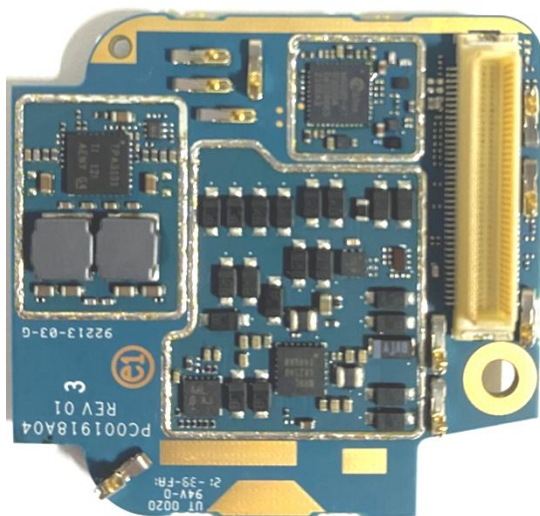
Expansion board without shields (Top)
(APX6000/APX5000/APX6000XE/APX6000Li/SRX2200)

Exhibit 9G



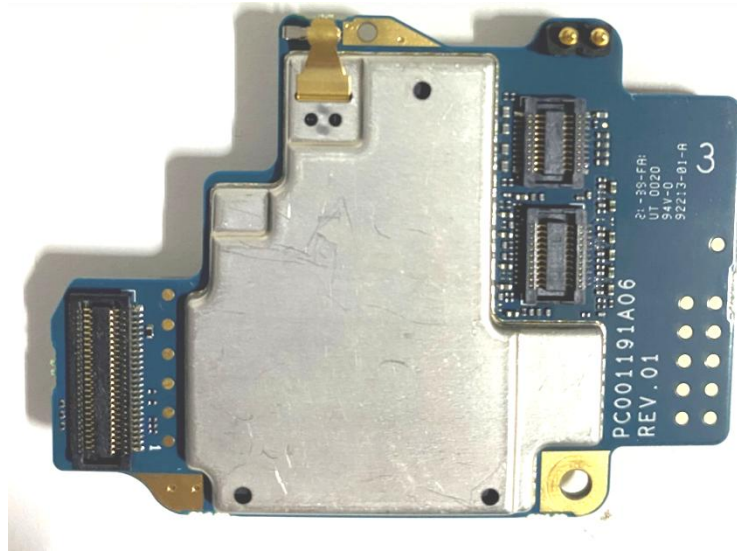
Expansion board with shields (Bottom)
(APX6000/APX5000/APX6000XE/APX6000Li/SRX2200)

Exhibit 9H



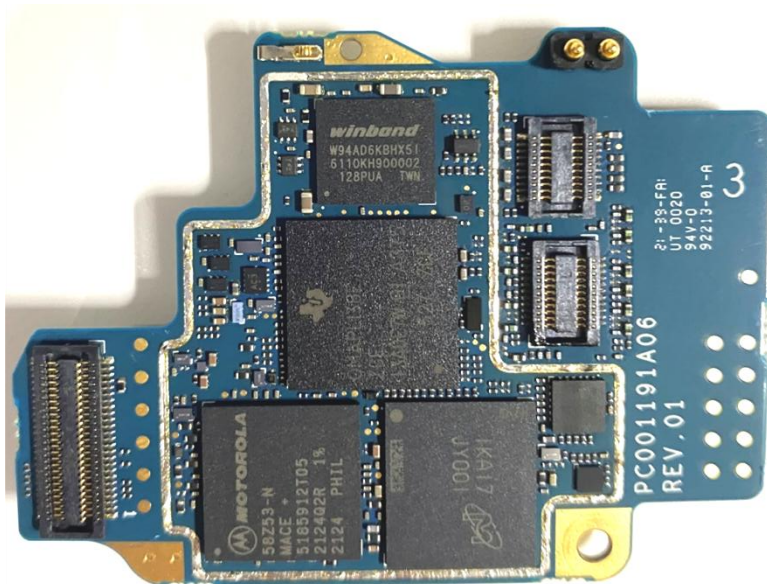
Expansion board without shields (Bottom)
(APX6000/APX5000/APX6000XE/APX6000Li/SRX2200)

Exhibit 9I



Vocon board with shields (Top)
(APX6000/APX5000/APX6000XE/APX6000Li/SRX2200)

Exhibit 9J



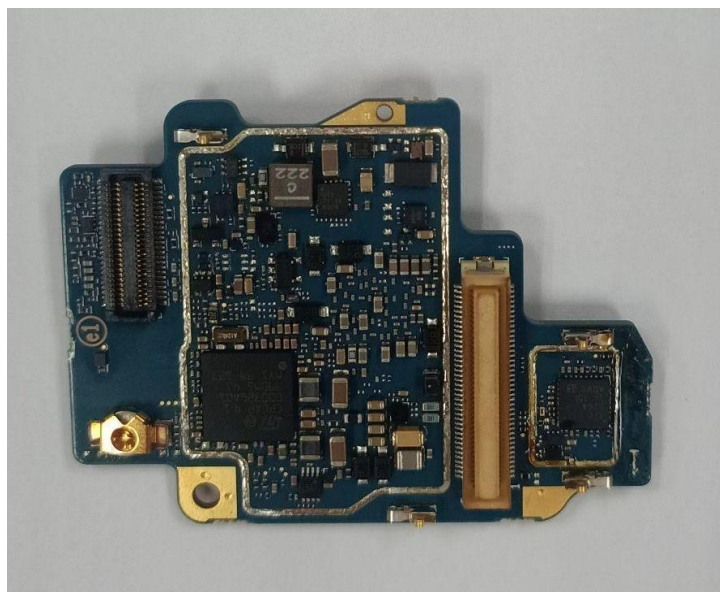
Vocon board without shields (Top)
(APX6000/APX5000/APX6000XE/APX6000Li/SRX2200)

Exhibit 9K



Vocon board with shields (Bottom)
(APX6000/APX5000/APX6000XE/APX6000Li/SRX2200)

Exhibit 9L



Vocon board without shields (Bottom)
(APX6000/APX5000/APX6000XE/APX6000Li/SRX2200)

Exhibit 9M



RF and Vocon boards with chassis and housing of APX6000/APX6000Li/APX5000 Model 1.5
(Front side)

Exhibit 9N



Expansion board with chassis and housing of APX6000/APX6000Li/APX5000 Model 1.5
(Back side)

Exhibit 90



RF and Vocon boards with chassis and housing of APX6000/APX6000Li/APX5000 Model 2.5
(Front side)

*This overall photo for Model 2.5 is not taken per the latest changes. However, the respective board with change is shown on 9I & 9J

Exhibit 9P



Expansion board with chassis and housing of APX6000/APX6000Li/APX5000 Model 2.5
(Back side)

*This overall photo for Model 2.5 is not taken per the latest changes. However, the respective board with change is shown on 9E & 9F.

Exhibit 9Q



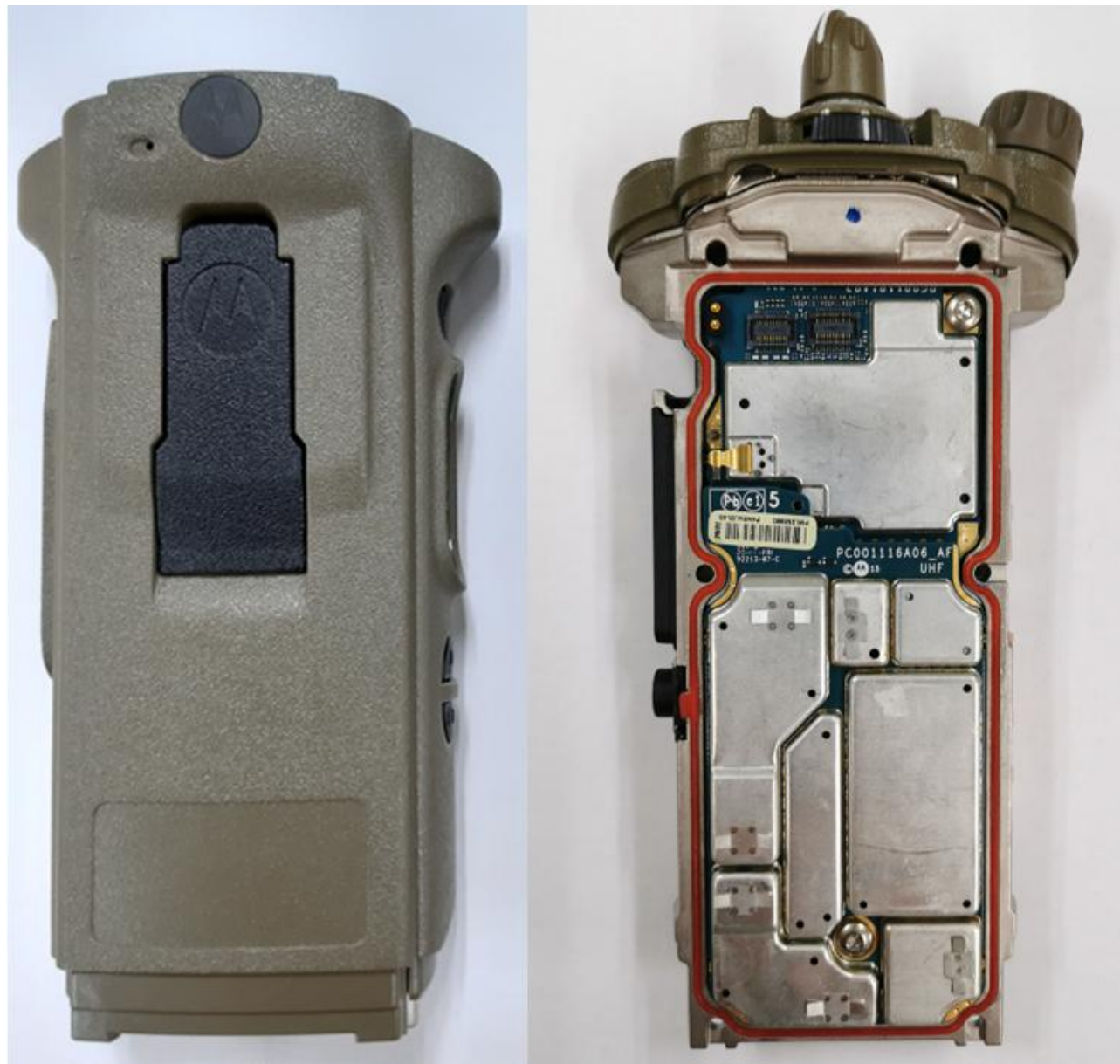
RF and Vocon boards with chassis and housing of APX6000/APX6000Li/APX5000 Model 3.5
(Front side)

Exhibit 9R



Expansion board with chassis and housing of APX6000/APX6000Li/APX5000 Model 3.5
(Back side)

Exhibit 9S



RF and Vocon boards with chassis and housing of SRX2200 Model 1.5
(Front side)

*This overall photo for Model 1.5 is not taken per the latest changes. However, the respective board with change is shown on 9I & 9J

Exhibit 9T



Expansion board with chassis and housing of SRX2200 Model 1.5
(Back side)

*This overall photo for Model 1.5 is not taken per the latest changes. However, the respective board with change is shown on 9E & 9F

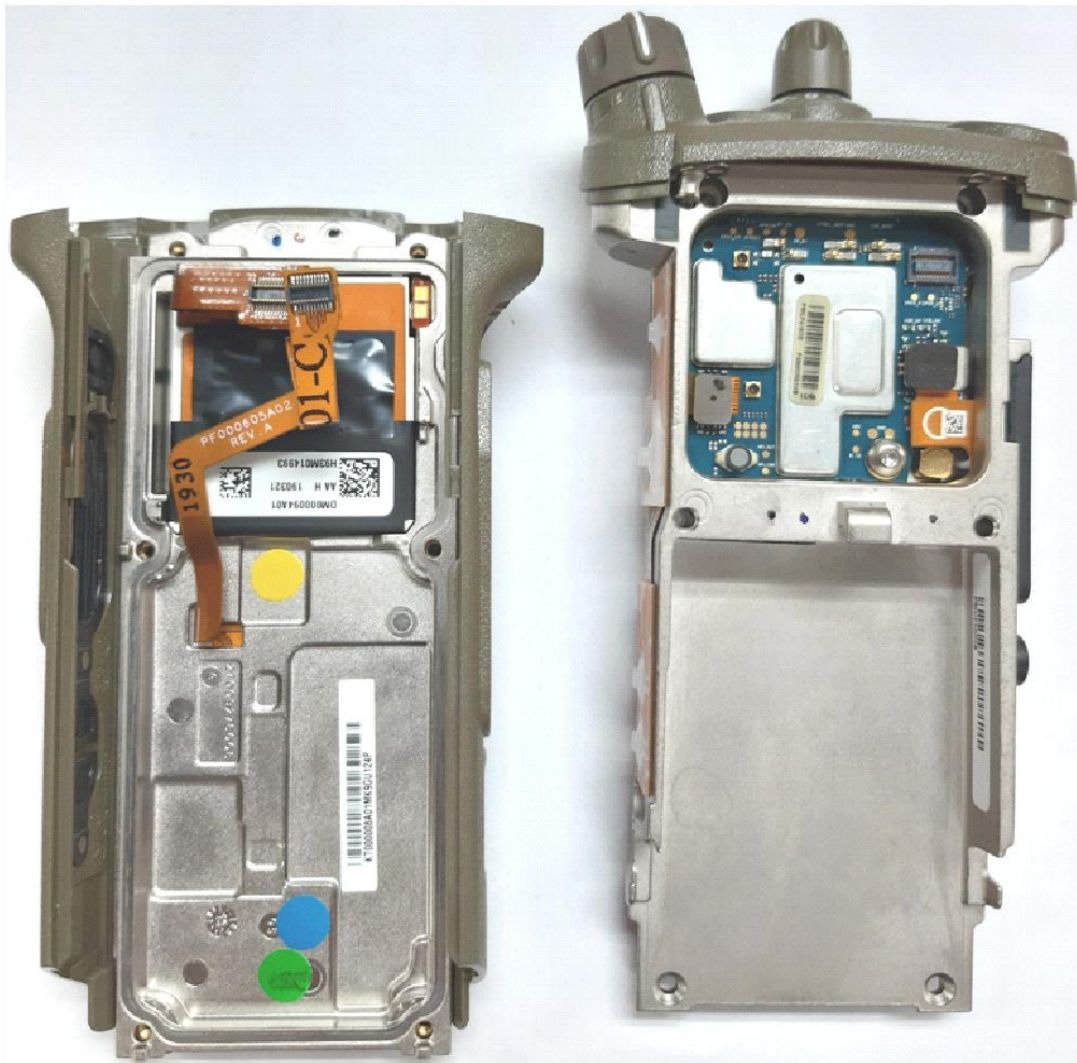
Exhibit 9U



RF and Vocon boards with chassis and housing of SRX2200 Model 3.5
(Front side)

*This overall photo for Model 3.5 is not taken per the latest changes. However, the respective board with change is shown on 9I & 9J

Exhibit 9V



Expansion board with chassis and housing of SRX2200 Model 3.5
(Back side)

*This overall photo for Model 3.5 is not taken per the latest changes. However, the respective board with change is shown on 9E & 9F

Exhibit 9W



RF and Vocon boards with chassis and housing of APX6000XE Model 1.5
(Front side)

Exhibit 9X



Expansion board with chassis and housing of APX6000XE Model 1.5
(Back side)

Exhibit 9Y



RF and Vocon boards with chassis and housing of APX6000XE Model 2.5
(Front side)

*This overall photo for Model 2.5 is not taken per the latest changes. However, the respective board with change is shown on 9I & 9J

Exhibit 9Z



Expansion board with chassis and housing of APX6000XE Model 2.5
(Back side)

*This overall photo for Model 2.5 is not taken per the latest changes. However, the respective board with change is shown on 9E & 9F.

Exhibit 9AA

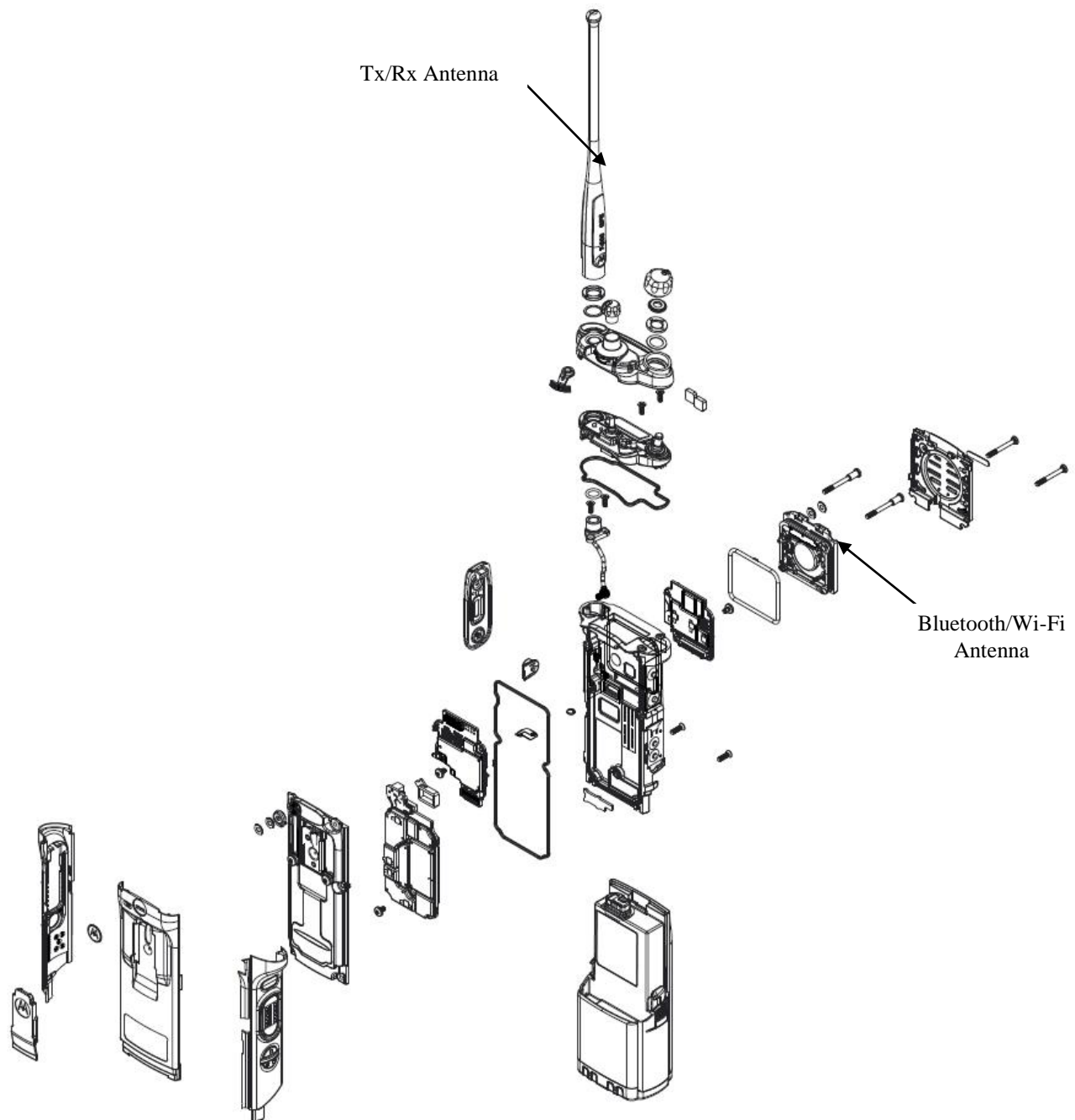


RF and Vocon boards with chassis and housing of APX6000XE Model 3.5
(Front side)

Exhibit 9AB

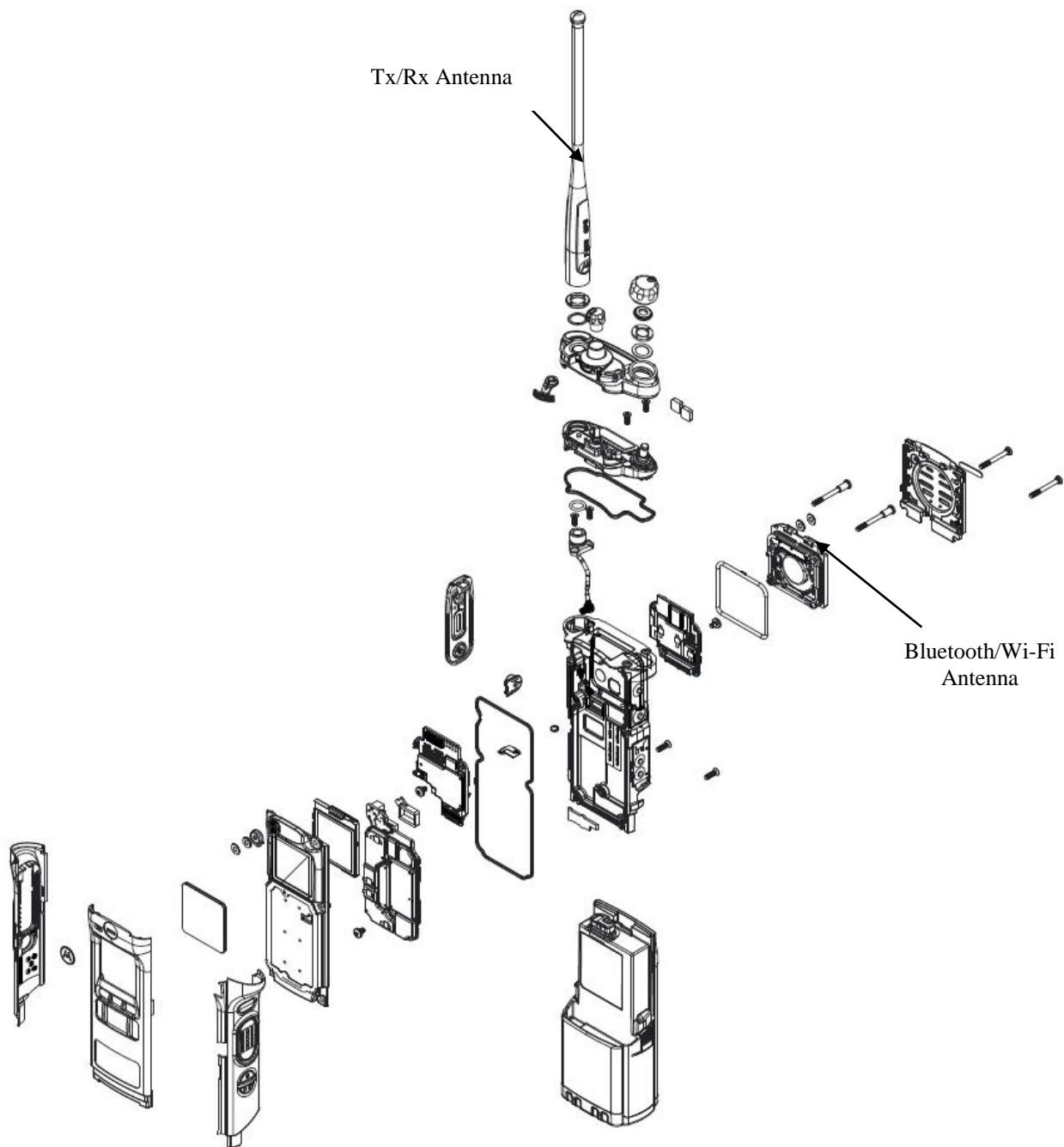


Expansion board with chassis and housing of APX6000XE Model 3.5
(Back side)

Exhibit 9AC

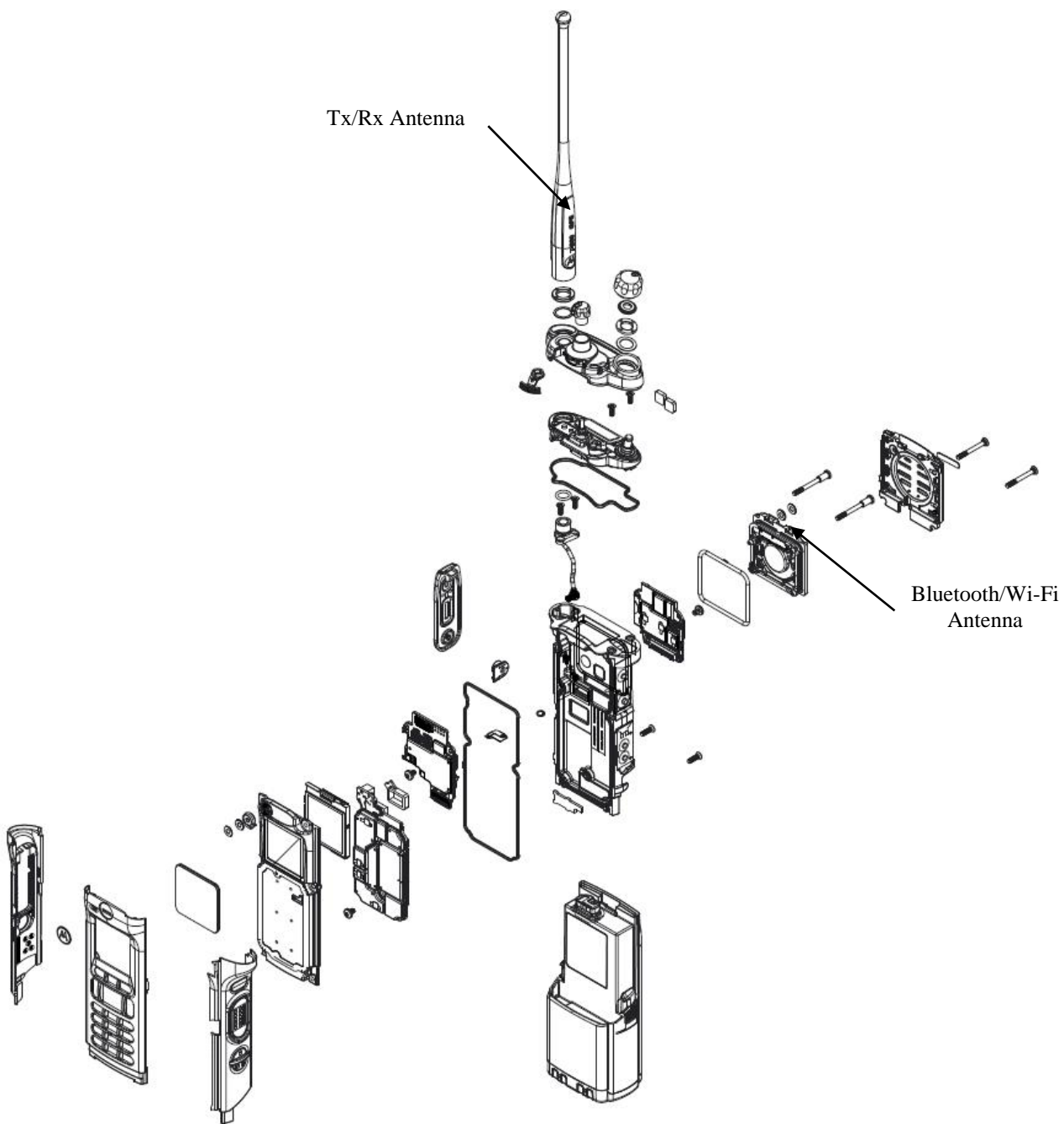
Exploded view of APX6000/APX6000Li/APX5000/SRX2200 Model 1.5

Exhibit 9AD



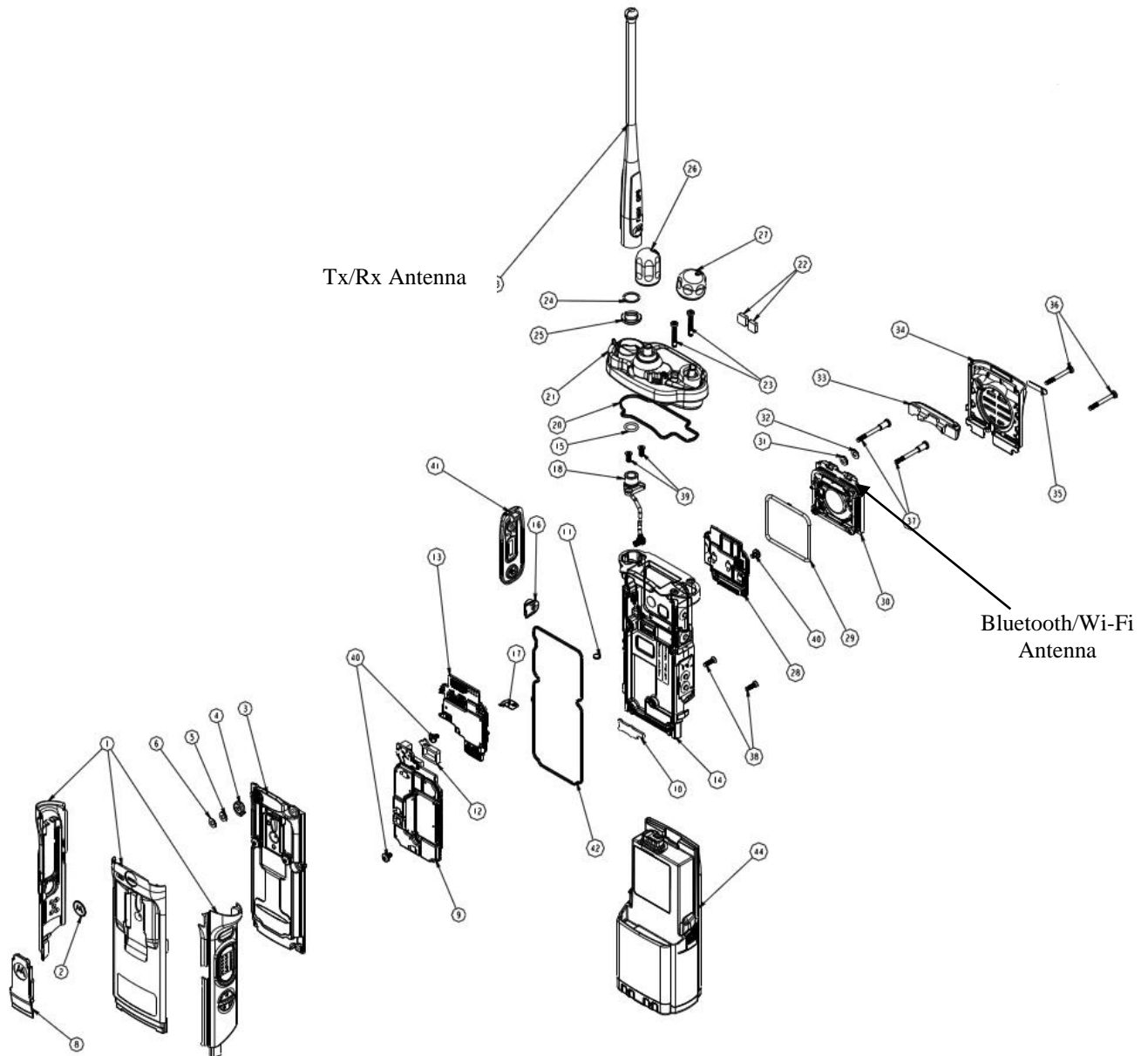
Exploded view of APX6000/APX6000Li/APX5000 Model 2.5

Exhibit 9AE



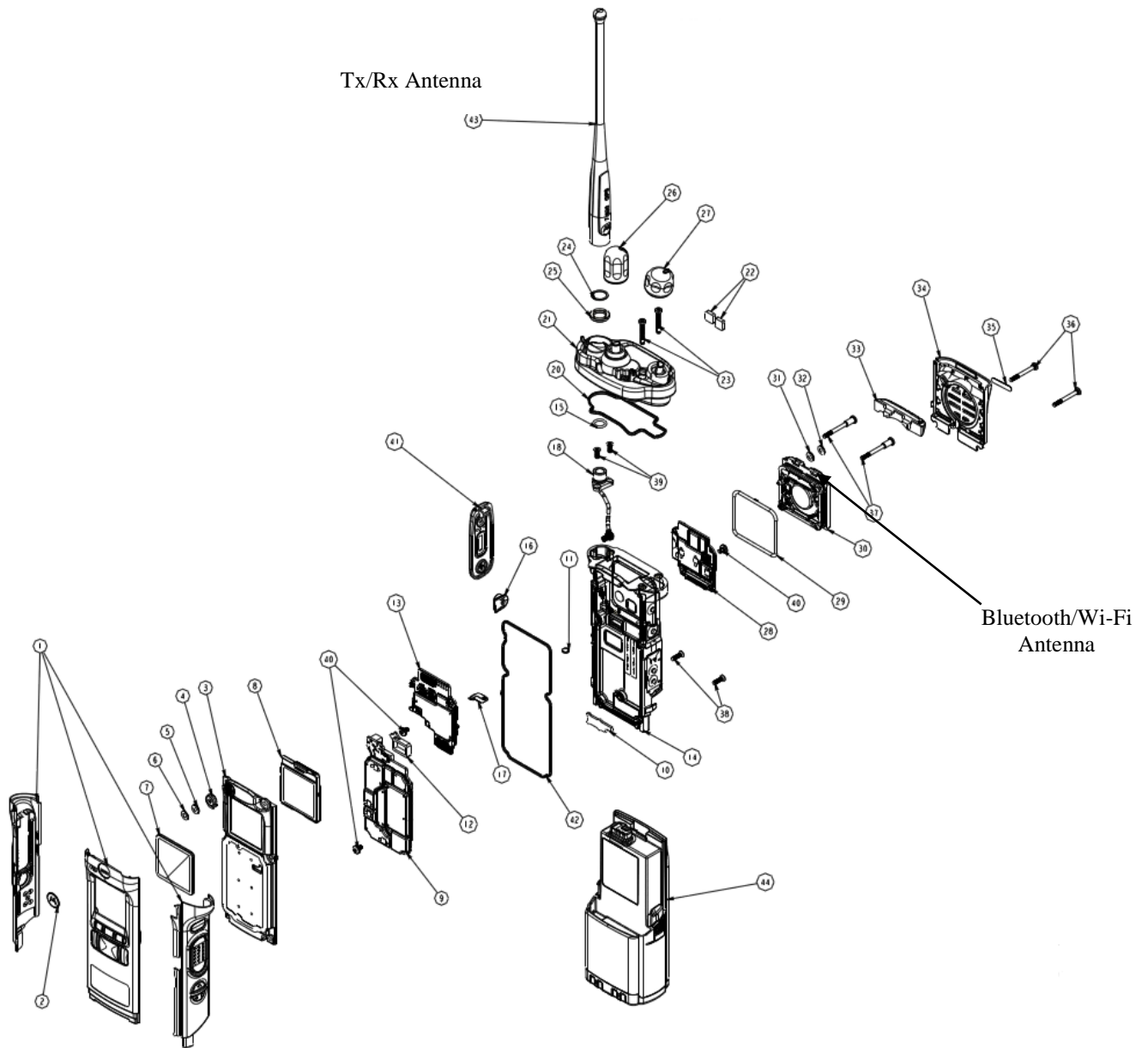
Exploded view of APX6000/APX6000Li/APX5000/SRX2200 Model 3.5

Exhibit 9AF



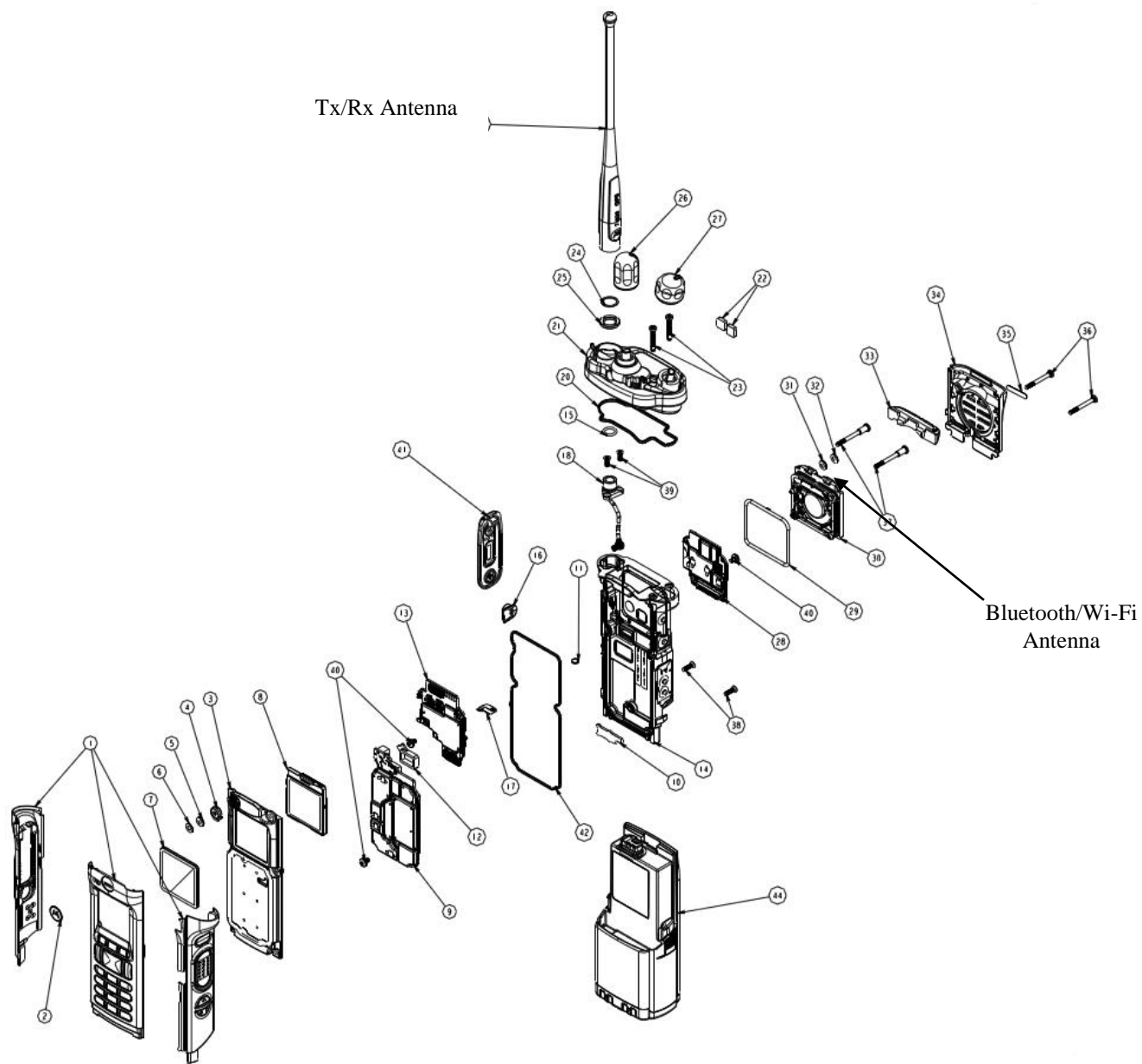
Exploded view of APX6000XE Model 1.5

Exhibit 9AG



Exploded view of APX6000XE Model 2.5

Exhibit 9AH



Exploded view of APX6000XE Model 3.5