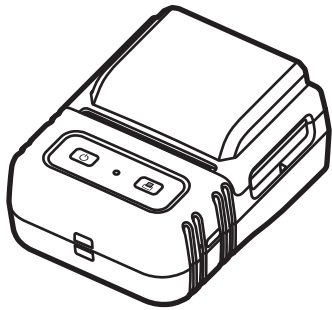


Quick Start Guide

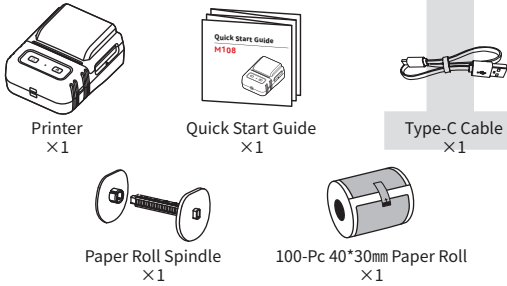
M102



English

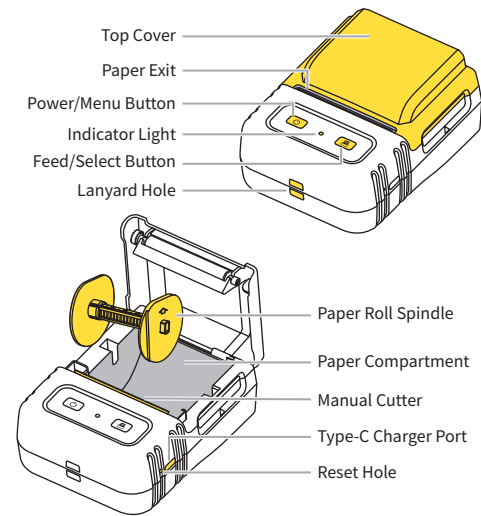
1. Product Introduction

1.1 Packing List



The Paper Roll and Paper Roll Spindle have been installed in the printer. However, if you have purchased a bundled printer package, it does not include a 40*30mm ~100pc Paper Roll.

1.2 Printer Parts Instruction



2. Getting Started

2.1 Downloading the App

Method 1: Search for the "Print Master" app on App Store® or Google Play™ for download and installation.

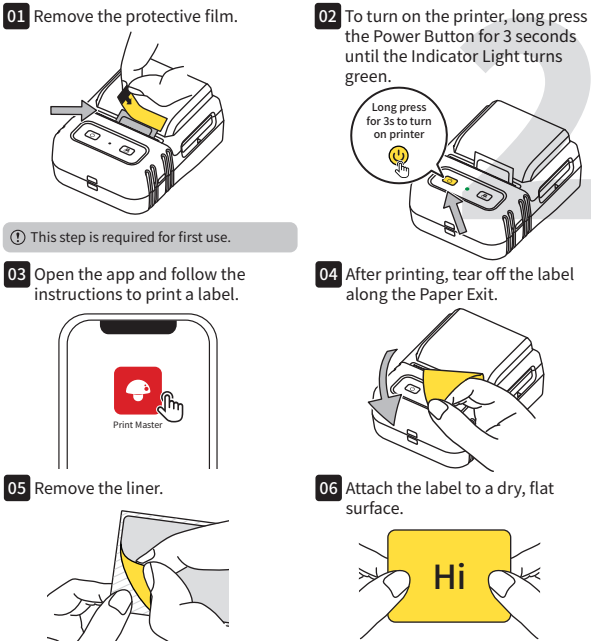


Method 2: Scan the QR code to download the app. You can scan the code using your cell phone's camera, the built-in QR code scanning feature of your browser, or a dedicated QR code scanning app.

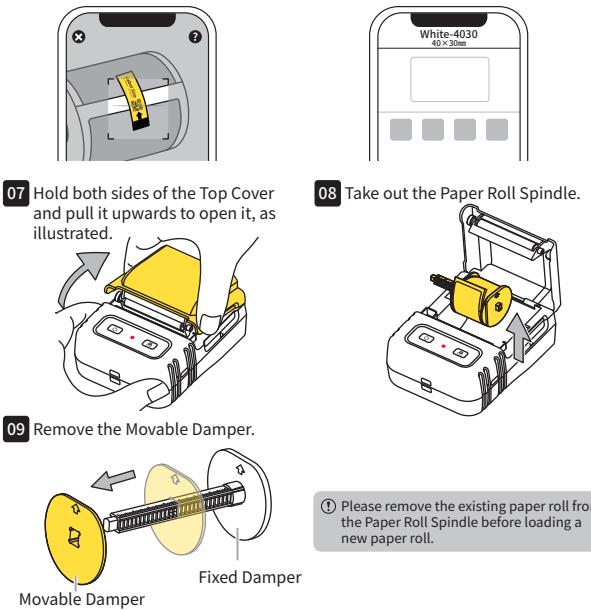
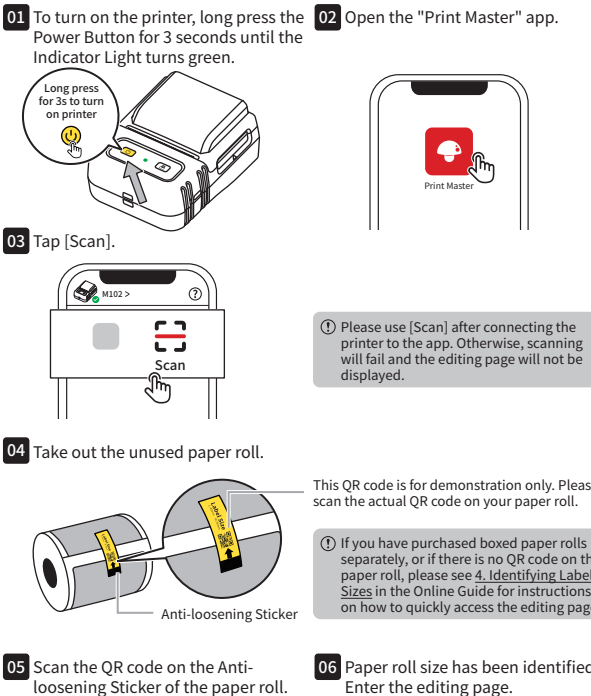


As the Safari browser on Apple devices does not support direct QR code scanning, please use your device's built-in QR code scanner instead.

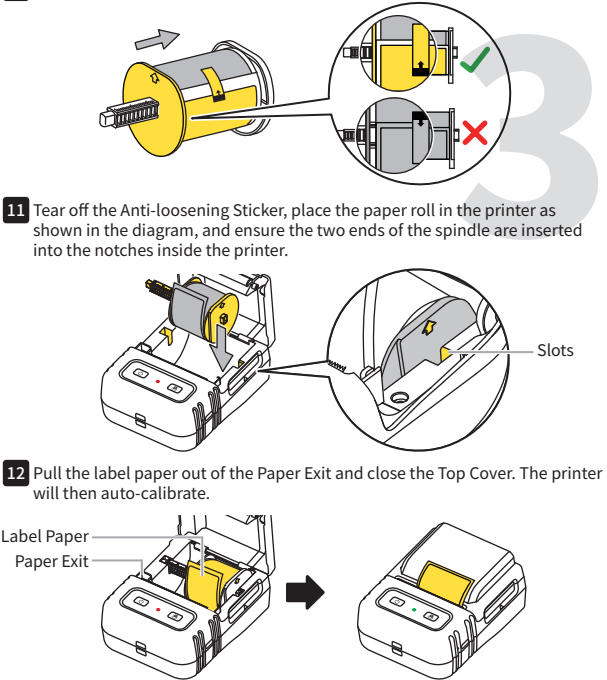
2.2 User Guide



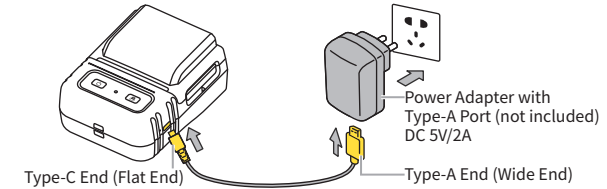
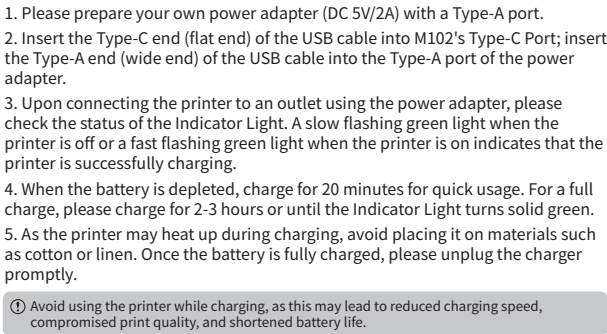
3. Replacing the Paper Roll



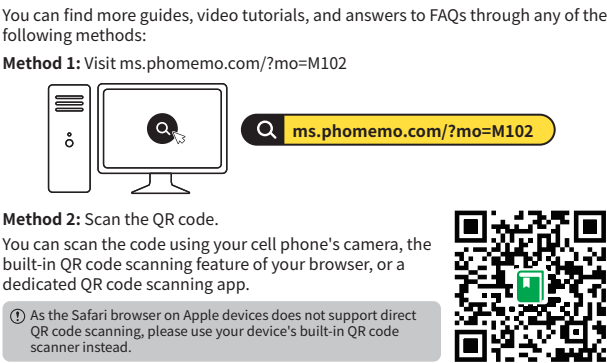
10 Place the paper roll as shown in the diagram and secure the Movable Damper.



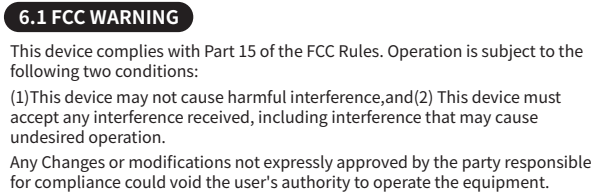
4. Charging Instructions



5. Accessing Detailed Online Guide



6. Information to User



NOTE: This equipment has been tested and found to comply with the limits for a Class B digital device, pursuant to Part 15 of the FCC Rules. These limits are designed to provide reasonable protection against harmful interference in a residential installation. This equipment generates uses and can radiate radio frequency energy and, if not installed and used in accordance with the instructions, may cause harmful interference to radio communications. However, there is no guarantee that interference will not occur in a particular installation. If this equipment does cause harmful interference to radio or television reception, which can be determined by turning the equipment off and on, the user is encouraged to try to correct the interference by one or more of the following measures: —Reorient or relocate the receiving antenna. —Increase the separation between the equipment and receiver. —Connect the equipment into an outlet on a circuit different from that to which the receiver is connected. —Consult the dealer or an experienced radio/TV technician for help. FCC Radiation Exposure Statement The device has been evaluated to meet general RF exposure requirement. The device can be used in portable exposure condition without restriction.

6.2 ISED NOTICE(Canada)

- English: This device contains licence-exempt transmitter(s)/receiver(s) that comply with Innovation, Science and Economic Development Canada's licence-exempt RSS(s). Operation is subject to the following two conditions: (1) This device may not cause interference. (2) This device must accept any interference, including interference that may cause undesired operation of the device. - French: L' émetteur/récepteur exempt de licence contenu dans le présent appareil est conforme aux CNR d' Innovation, Sciences et Développement économique Canada applicables aux appareils radio exempts de licence. L' exploitation est autorisée aux deux conditions suivantes: 1) L' appareil ne doit pas produire de brouillage; 2) L' appareil doit accepter tout brouillage radioélectrique subi, même si le brouillage est susceptible d' en compromettre le fonctionnement IC RF exposure statement: The device has been evaluated to meet general IC RF exposure requirement. The device can be used in portable exposure condition without restriction. IC Déclaration d'exposition aux RF: L'appareil a été évalué pour répondre aux exigences générales d'exposition aux RF d'IC. L'appareil peut être utilisé dans des conditions d'exposition portable sans restriction.

6.3 BATTERIES

A warning that batteries (battery pack or batteries installed) shall not be exposed to excessive heat such as sunshine, fire or the light. 1) Replacement of a battery with an incorrect type that can defeat a safeguard; 2) Disposal of a battery into fire or a hot oven, or mechanically crushing or cutting of a battery, that can result in an explosion; 3) Leaving a battery, in an extremely high temperature surrounding environment that can result in an explosion or the leakage of flammable liquid or gas; 4) A battery subjected to extremely low air or assure that may result in an explosion or the leakage of flammable liquid or gas.

Battery Capacity : 3.7V 1200mAh 4.44Wh Type: Li-ion Polymer Battery

7. Warranty Card

Exchange Return

Customer Information	Name
	Sex
	Phone No.
Product Information	Address
	Date of Purchase
	Order No.
Return/Exchange Form	Serial No.
	Reason for Return/Exchange

Special Notes

The company assumes full responsibility for the revision and explanation of this manual, exercising utmost diligence to guarantee its accuracy. Nevertheless, please note that any technical improvements to the product may not be separately notified, and that the images of the product, accessories, software interfaces, etc. in this manual serve solely as illustrations and references. Due to product updates and upgrades, the actual product may vary slightly from the images. Please refer to the physical product for accurate representations.